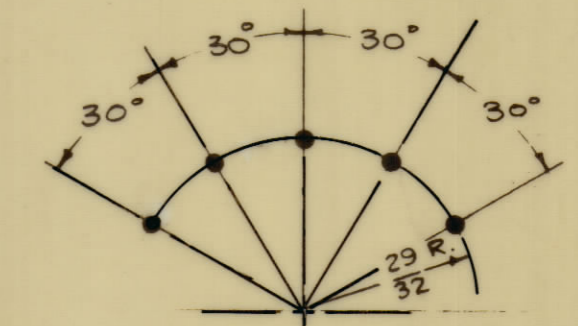
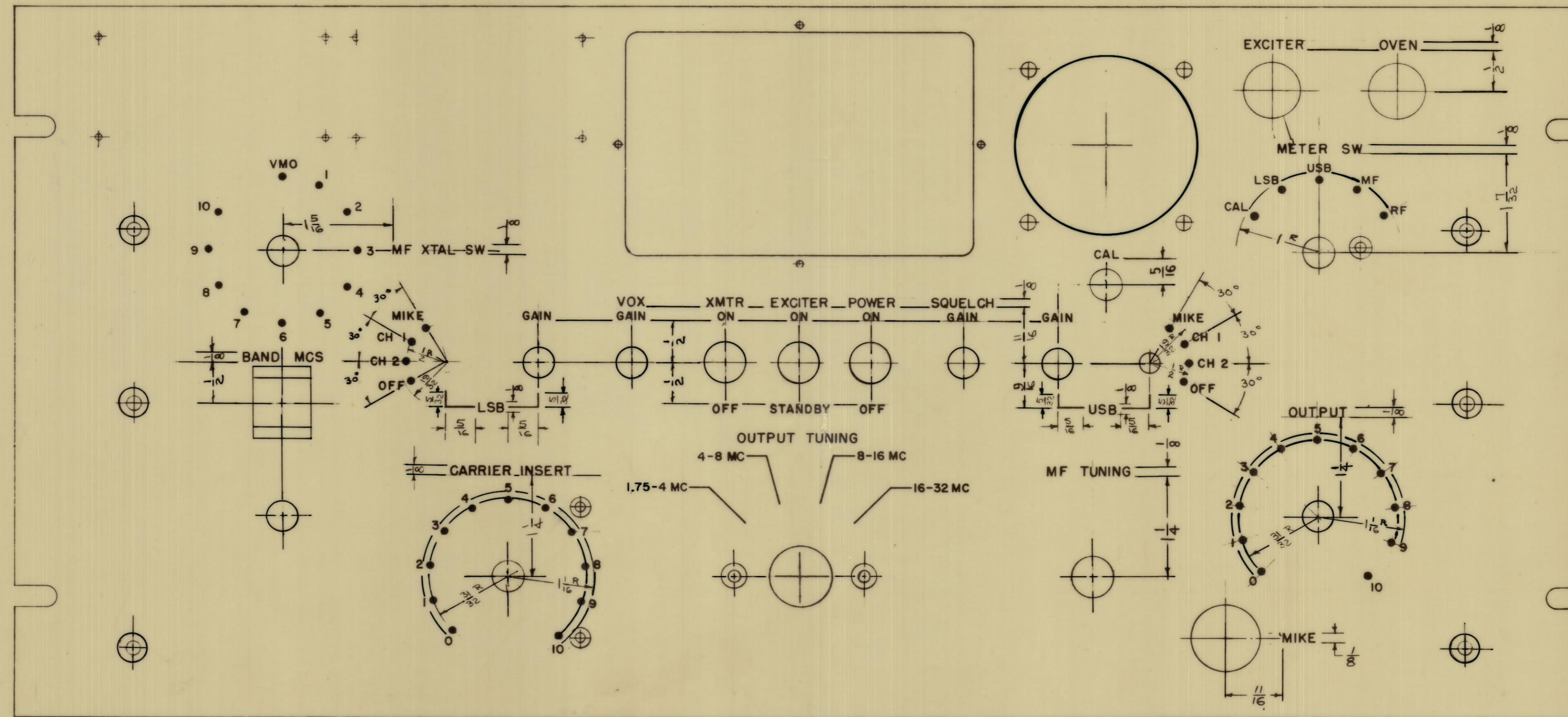
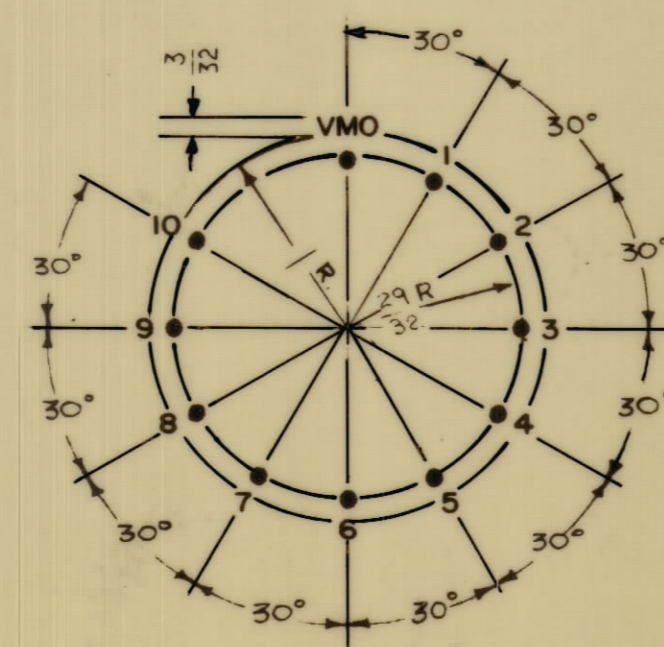


IF IT IS FOUND DESIRABLE TO CHANGE ANY TOLERANCE OR OTHER DETAIL SPECIFIED ON THIS DRAWING NOTIFY THE PURCHASER PROMPTLY.
 MAXIMUM ALLOWABLE TOLERANCES HAVE BEEN DETERMINED AND DEVIATIONS WILL BE CAUSE FOR REJECTION. REMOVE ALL BURRS AND SHARP EDGES

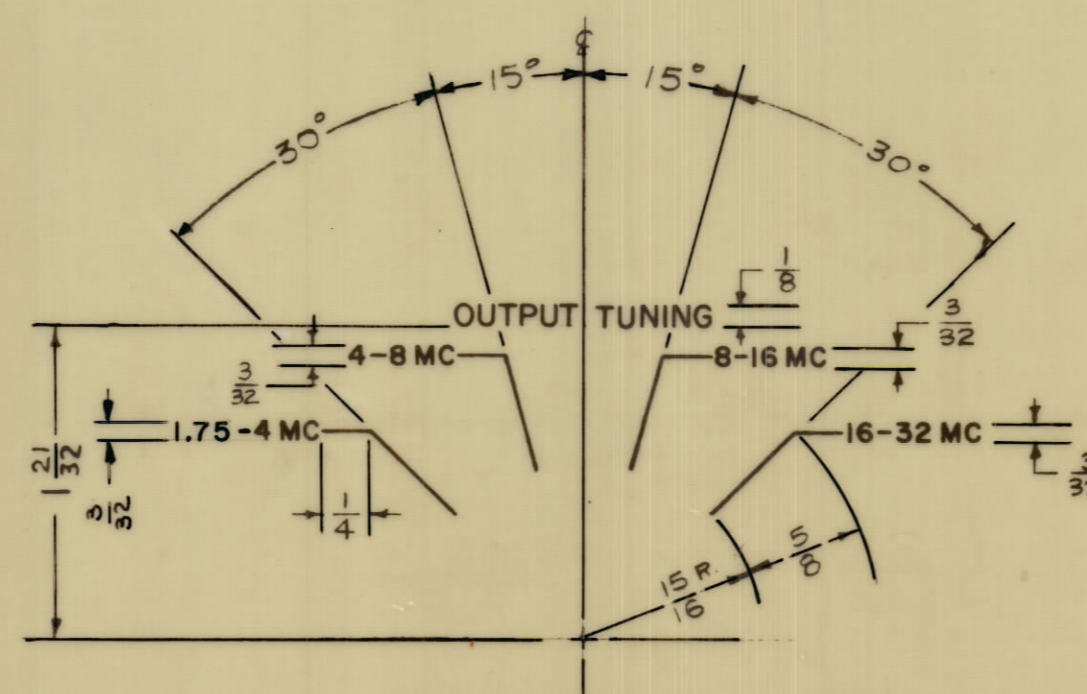


ANGLE DISPLACEMENT METER SW

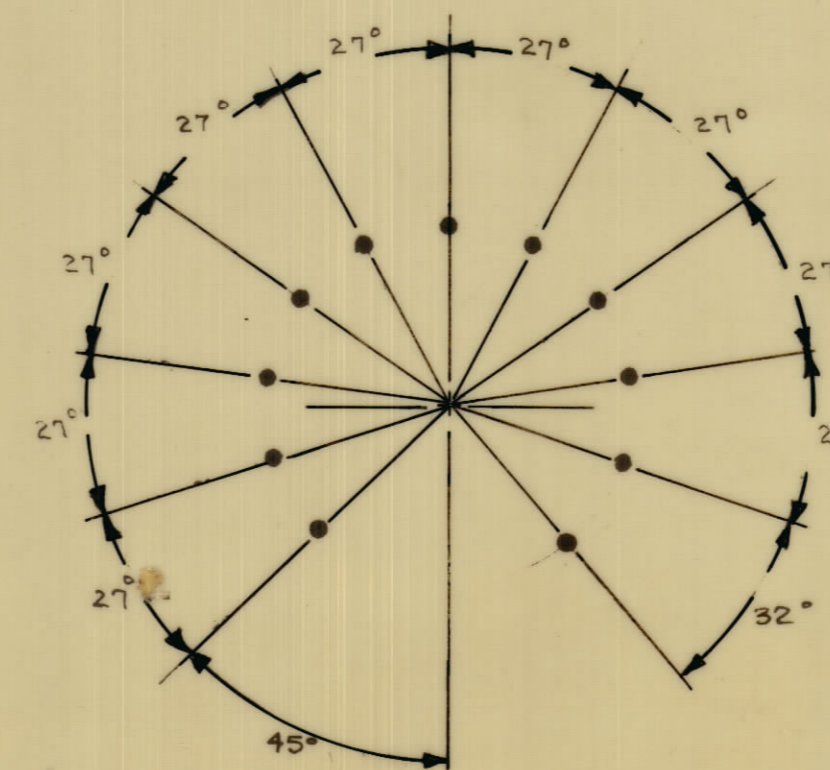
NOTES:
 ALL LETTERING $\frac{3}{32}$ " HIGH UNLESS SPECIFIED OTHERWISE.
 ALL LETTERING WHITE FILLED GOTHIC.
 ALL DOTS $\frac{1}{16}$ " WHITE FILLED.



ANGLE DISPLACEMENT "MF XTAL SW"



ANGLE DISPLACEMENT "OUTPUT TUNING"



ANGLE DISPLACEMENT "OUTPUT & CARRIER INSERT"

LETTER HEIGHT	DEPTH OF STROKE	WIDTH OF STROKE
$\frac{3}{32}$.010	.015
$\frac{1}{8}$.010	.020

REF: MS-1037

REQ. ITEM	PART NO.	DESCRIPTION	SYMBOL
ff		THE TECHNICAL MATERIEL CORP. MAMARONECK, NEW YORK	
ff		MARKING, PANEL, FRONT	
ff		METHOD - ENGRAVING	
ff		TYPE & TEMPER	
ff		HEAT TREAT. SPEC.	
ff		FINISH & SPEC. NO.	

ORIGINAL RELEASE FOR PRODUCTION	5/31/64	A.M.
ISSUE ITEM	CHANGED FROM	DATE
TOLERANCES		SCALE: 100-00
ALL OTHERS	DEC. DIM. \pm FRAC. DIM. \pm ANGULAR DIM. \pm	DRILL, PUNCH, COMMERCIAL STOCK SIZES AND MANUFACTURERS TOLERANCES ARE NOT INCLUDED.

1	SBE-6	PROJECT NO.	ASSY. NO.	DATE
REQ. PER UNIT	MODEL	USED ON		

LD-1527

LD-1527