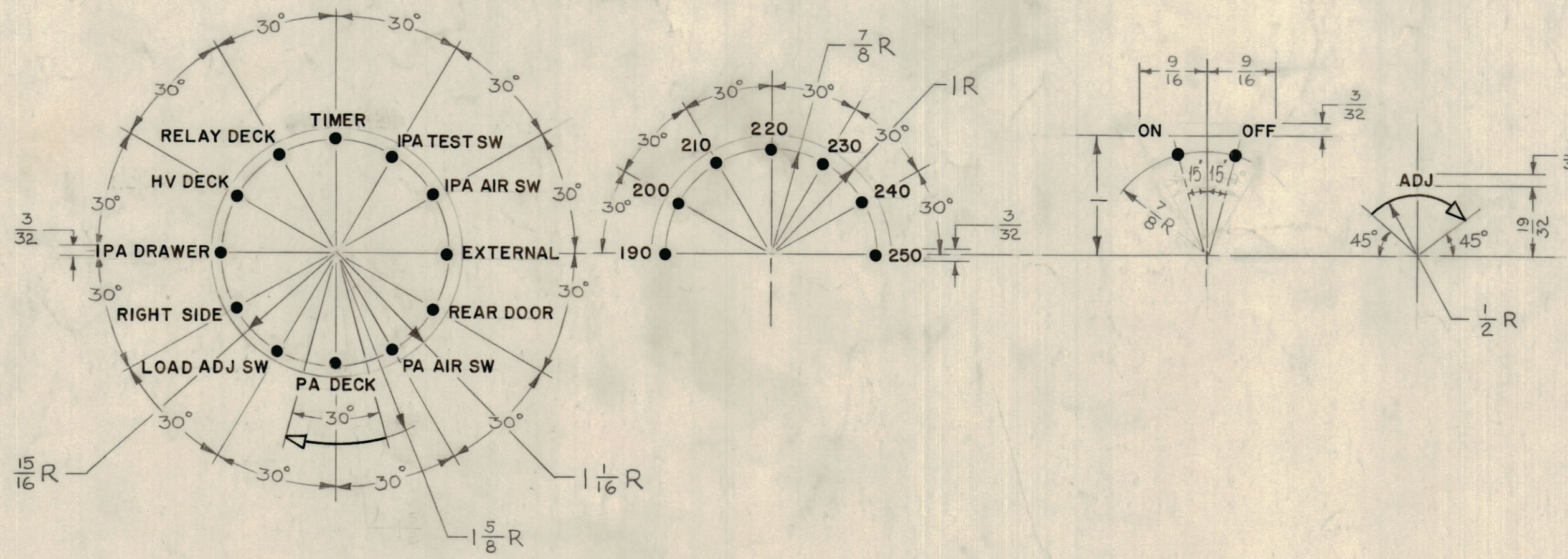


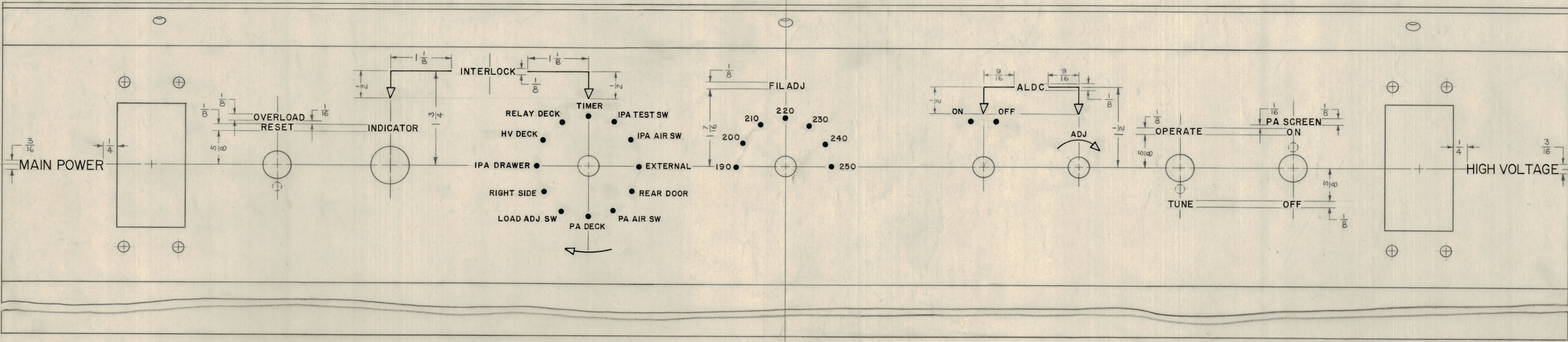
UNLESS OTHERWISE SPECIFIED

- 1- ALL LETTERING 3/32 HIGH.
- 2- ALL LETTER GROUPS TO BE CENTERED ON HOLES, CUTOUTS OR INDICATING LINES.
- 3- ENGRAVING TO BE GOTHIC, WHITE FILLED, SIZES SHOWN ON CHART.
- 4- ALL DOTS 3/32 DIA. WHITE FILLED
- 5- ALL ARROWHEADS 3/32 X 5/32 DIA. WHITE OUTLINED.
- 6- ALL LINES TO BE WHITE FILLED.
- 7- ALL ENGRAVING AS PER TMC SPEC S566.

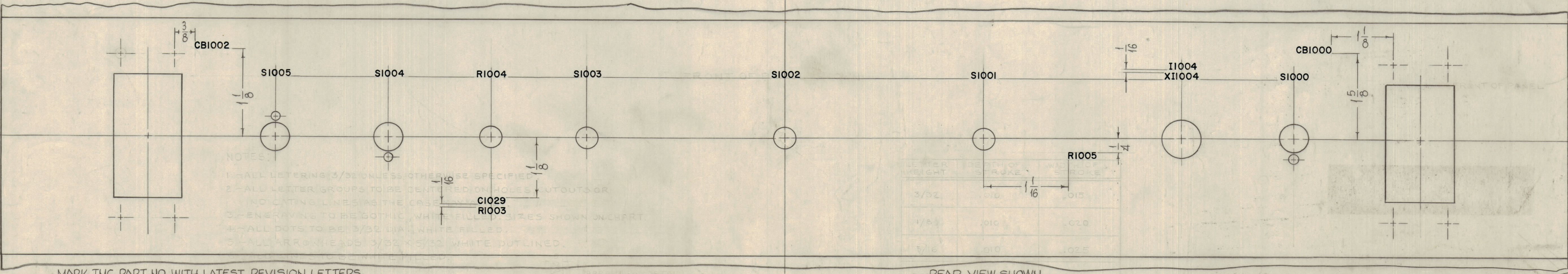
LETTER HEIGHT	DEPTH OF STROKE	WIDTH OF STROKE
3/32	.010	.015
1/8	.010	.020
3/16	.010	.025
DOTS	.010	—
ARROWHEADS	.010	.015
LINES	.010	.015



REVISIONS						
ZONE	SYM	DESCRIPTION	DATE	E.M.N. NO.	DRAFT	CHKD
X		EXPERIMENTAL RELEASE	4.29.64		JTB	
Ø		ORIGINAL RELEASE FOR PRODUCTION	2.18.66		Jc	



FRONT VIEW SHOWN



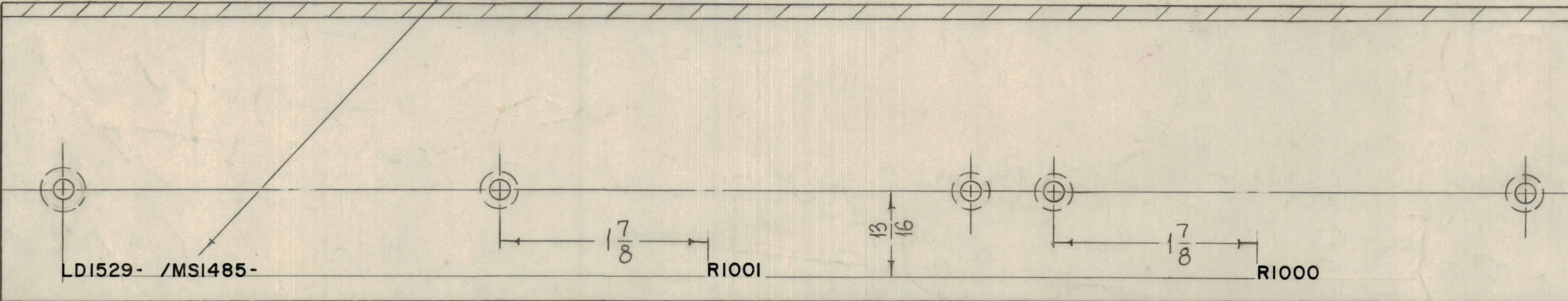
REAR VIEW SHOWN

NOTES:
 1- ALL LETTERING 3/32 UNLESS OTHERWISE SPECIFIED.
 2- ALL LETTER GROUPS TO BE CENTERED ON HOLES, CUTOUTS OR INDICATING LINES.
 3- ENGRAVING TO BE GOTHIC, WHITE FILLED, SIZES SHOWN ON CHART.
 4- ALL DOTS TO BE 3/32 DIA. WHITE FILLED.
 5- ALL ARROWHEADS 3/32 X 5/32 WHITE OUTLINED.

MARK TMC PART NO. WITH LATEST REVISION LETTERS.

MARKING PROCESS AS PER TMC SPEC S727.
 ALL LETTERING 1/8 HIGH BLACK GOTHIC.

VIEW V-V



REQ'D.	ITEM	PART NUMBER	DESCRIPTION	SYMBOL
		BUDETTI	LIST OF MATERIAL	
MATERIAL				
FINISH				
UNLESS OTHERWISE SPECIFIED DIMENSIONS ARE IN INCHES AND INCLUDE CHEMICALLY APPLIED OR PLATED FINISHES				
QTY./UNIT	MODEL USED ON	ASSY. NO.	DRAWN	DATE
SCALE	CODE		CHECKED	DATE
THE CONTENTS OF THIS DRAWING ARE THE EXCLUSIVE PROPERTY OF THE TECHNICAL MATERIEL CORP. ITS UNAUTHORIZED USE OR REPRODUCTION IN WHOLE OR IN PART IS STRICTLY FORBIDDEN.			ELECT. DES.	DATE
			MECH. DES.	DATE
			DATE	

THE TECHNICAL MATERIEL CORP.
 MAMARONECK, NEW YORK

MARKING MAIN CONTROL PANEL

LD1529

REF TMC OWC NS 1485

NOTES

LD1529

VIEW V-V

REV. LTR.