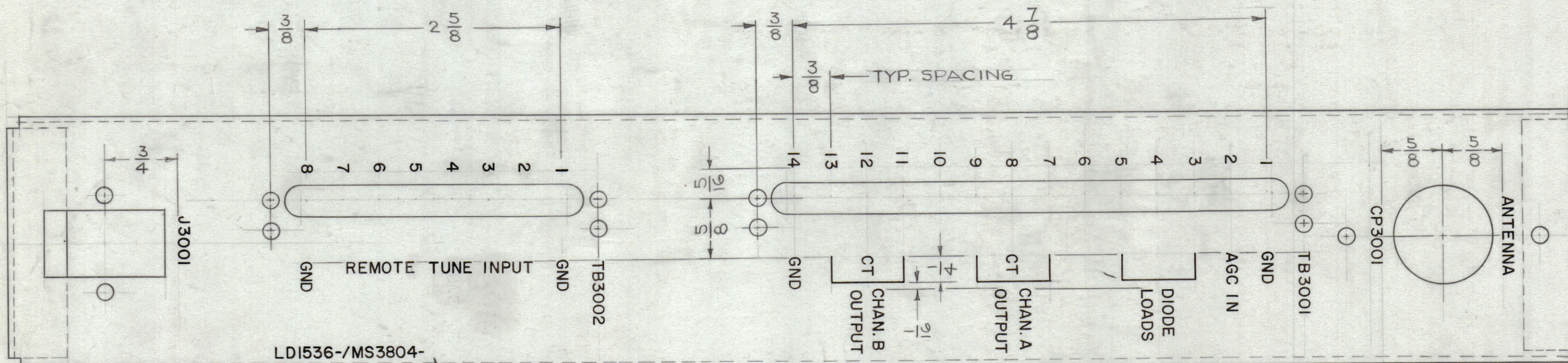


REVISIONS					
ZONE	SYM	DESCRIPTION	DATE	E.M.N. NO.	APPD
-	X	TMC P/N MARKING ADDED	8.25.64	-	LB
-	Ø	ORIGINAL RELEASE FOR PRODUCTION	8.27.64	-	LB



MARK TMC P/N WITH LATEST REV. LETTERS

- UNLESS OTHERWISE SPECIFIED:
1. ALL LETTERING TO BE 1/8 HIGH BLACK GOTHIC, .010 WIDE STROKE.
 2. ALL LINWORK .010 WIDE STROKE.
 3. MARKING PROCESS AS PER TMC SPEC. S-727.

LDI536 Ø

REF. MS3804

REQ'D.	ITEM	PART NUMBER	DESCRIPTION	SYMBOL
EATON LIST OF MATERIAL				
MATERIAL		THE TECHNICAL MATERIEL CORP. MAMARONECK, NEW YORK		
FINISH		TITLE MARKING, CHASSIS		
DRAWN		TAR	DATE	7/14/64
CHECKED		@	DATE	8-25-64
ELECT. DES.		LB	DATE	7-31-64
MECH. DES.		LB	DATE	1-31-64
FINAL APPROVAL				DATE
LDI536 Ø				
SHEET				REV. LTR.

Q'TY./UNIT	MODEL USED ON	ASS'Y. NO.
SCALE	CODE	
1:1	A	
THE CONTENTS OF THIS DRAWING ARE THE EXCLUSIVE PROPERTY OF THE TECHNICAL MATERIEL CORP. ITS UNAUTHORIZED USE OR REPRODUCTION IN WHOLE OR IN PART IS STRICTLY FORBIDDEN.		

NOTES