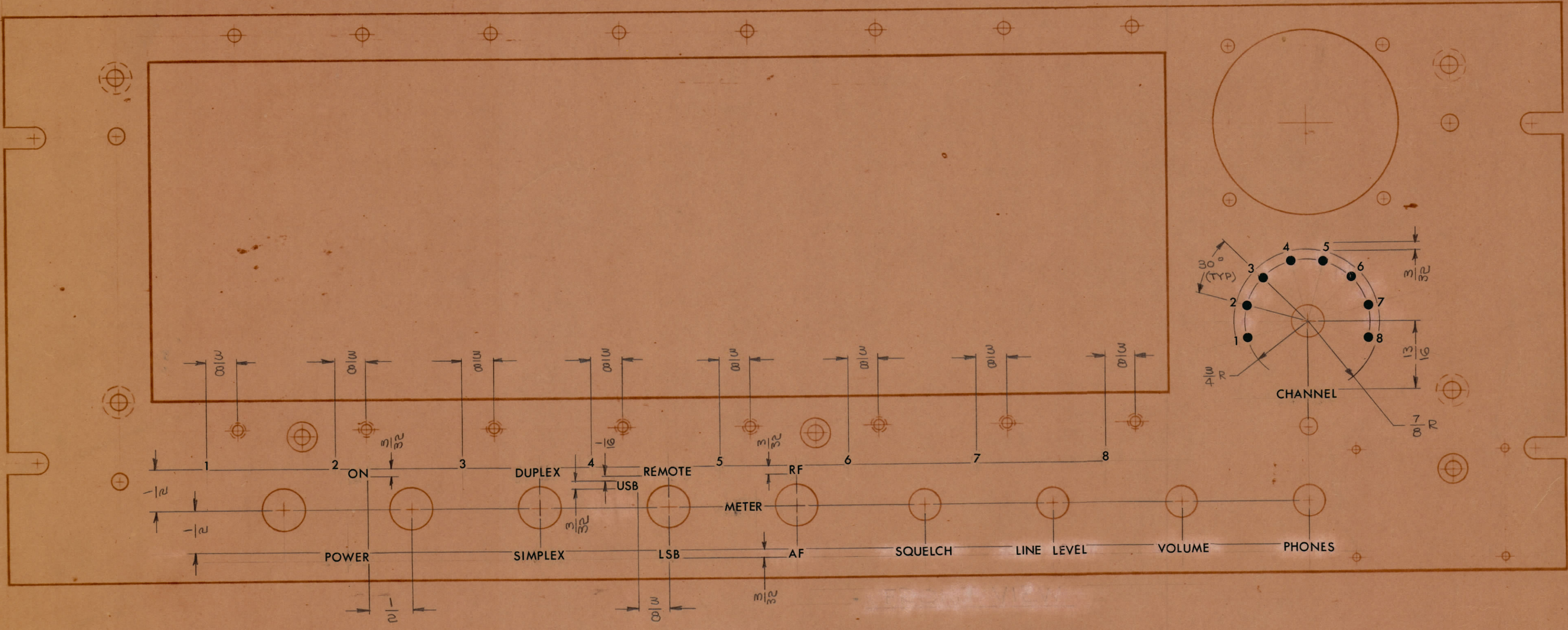


REVISIONS					
ZONE	SYM	DESCRIPTION	DATE	E.M.N. NO.	APPR
#	X	EXPER. RELEASE	2-4-64	X	G.D.L.
Ø		ORIGINAL RELEASE FOR PRODUCTION	8-27-64		

— FRONT VIEW —
TOP



HEIGHT OF LETTERS	DEPTH OF STROKE	WIDTH OF STROKE
1/8	.010	.020
3/32	.010	.015
DOTS	.010	1/16 DIA.

~ UNLESS OTHERWISE SPECIFIED ~
 1~ ALL ENGRAVING TO BE 1/8 HIGH, WHITE OUTLINE FILLED.
 2~ ALL DOTS TO BE WHITE FILLED,
 3~ ALL LETTER GROUPS TO BE CENTERED ON HOLES.

REF: MS3957 (4)

REQ'D.	ITEM	PART NUMBER	DESCRIPTION	SYMBOL
T. AALTONEN LIST OF MATERIAL				
MATERIAL		THE TECHNICAL MATERIEL CORP. MAMARONECK, NEW YORK		
FINISH		TITLE MARKING, PANEL, FRONT MARKING PROCESS: ENGRAVING		
UNLESS OTHERWISE SPECIFIED DIMENSIONS ARE IN INCHES AND INCLUDE CHEMICALLY APPLIED OR PLATED FINISHES		DRAWN G.D.L.	DATE 2-4-64	FINAL APPROVAL G.D.L.
DECIMALS .X ± .05 .XX ± .01 .XXX ± .005		CHECKED G.D.L.	DATE	DATE
TOLERANCES		ELECT. DES. G.D.L.	DATE	DATE
FRACTIONS ± 1/64 ANGLES ± 0° 30'		MECH. DES.	DATE	DATE
SHEET 1 OF 2				REV. LTR.

QTY./UNIT	MODEL USED ON	ASSY. NO.
1	SMR-1	
SCALE 1:1	CODE A	

NOTES

THE CONTENTS OF THIS DRAWING ARE THE EXCLUSIVE PROPERTY OF THE TECHNICAL MATERIEL CORP. ITS UNAUTHORIZED USE OR REPRODUCTION IN WHOLE OR IN PART IS STRICTLY FORBIDDEN.

LD1578 Ø