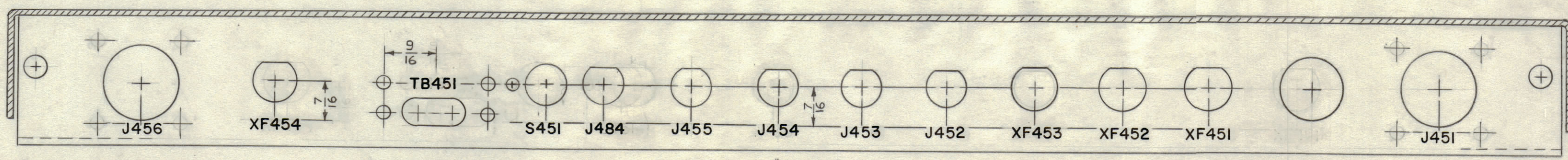
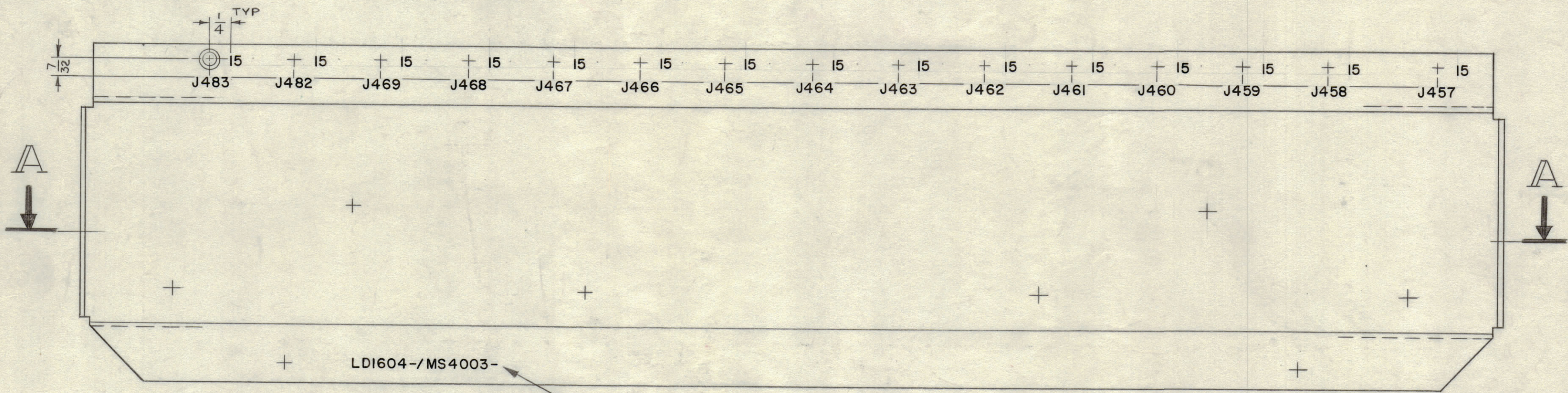


REVISIONS						
ZONE	SYM	DESCRIPTION	DATE	E.M.N. NO.	DRAFT	CHKD APPD
	X	EXPERIMENTAL RELEASE	9.11.64	X	JWB	
	Ø	ORIGINAL RELEASE FOR PRODUCTION	9.28.64	Ø	JL	
	A	J484 ADD; TB451 WAS E451; SEE MS4003 REV. "A".	2.6.65	13408	JL	JWB

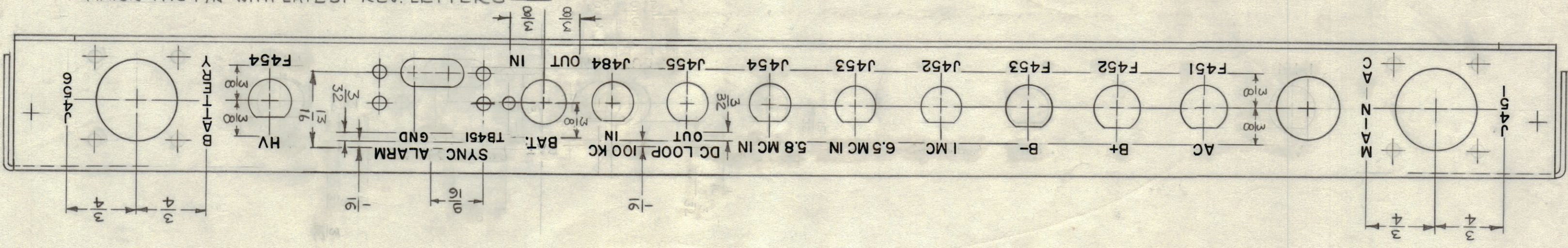


SECTION "A-A"



LDI604-MS4003

MARK TMC P/N WITH LATEST REV. LETTERS



- ~UNLESS OTHERWISE SPECIFIED~
1. -ALL LETTERING TO BE 1/8 HIGH BLACK GOTHIC.
 2. -MARKING PROCESS: AS PER TMC SPEC. S-727
 3. -ALL LETTER GROUPS TO BE CENTERED ON HOLES.

REF.: MS 4003

1	LFSB-1	
QTY./UNIT	MODEL USED ON	ASS'Y. NO.
SCALE	CODE	
1:1	A	

THE CONTENTS OF THIS DRAWING ARE THE EXCLUSIVE PROPERTY OF THE TECHNICAL MATERIEL CORP. ITS UNAUTHORIZED USE OR REPRODUCTION IN WHOLE OR IN PART IS STRICTLY FORBIDDEN.

REQ'D.	ITEM	PART NUMBER	DESCRIPTION	SYMBOL
GELLMAN LIST OF MATERIAL				
MATERIAL		THE TECHNICAL MATERIEL CORP. MAMARONECK, NEW YORK		
FINISH		TITLE MARKING, CHASSIS, ELEC., MAIN-REAR PROCESS, TMC S-727		
UNLESS OTHERWISE SPECIFIED DIMENSIONS ARE IN INCHES AND INCLUDE CHEMICALLY APPLIED OR PLATED FINISHES		DRAWN	DATE	FINAL APPROVAL
DECIMALS X ± .05 .XX ± .01 .XXX ± .005		CHECKED	DATE	
FRACTIONS ± 1/64 ANGLES ± 0° 30'		ELECT. DES.	DATE	
TOLERANCES		MECH. DES.	DATE	
SHEET				REV. LTR.

NOTES

LDI604 A