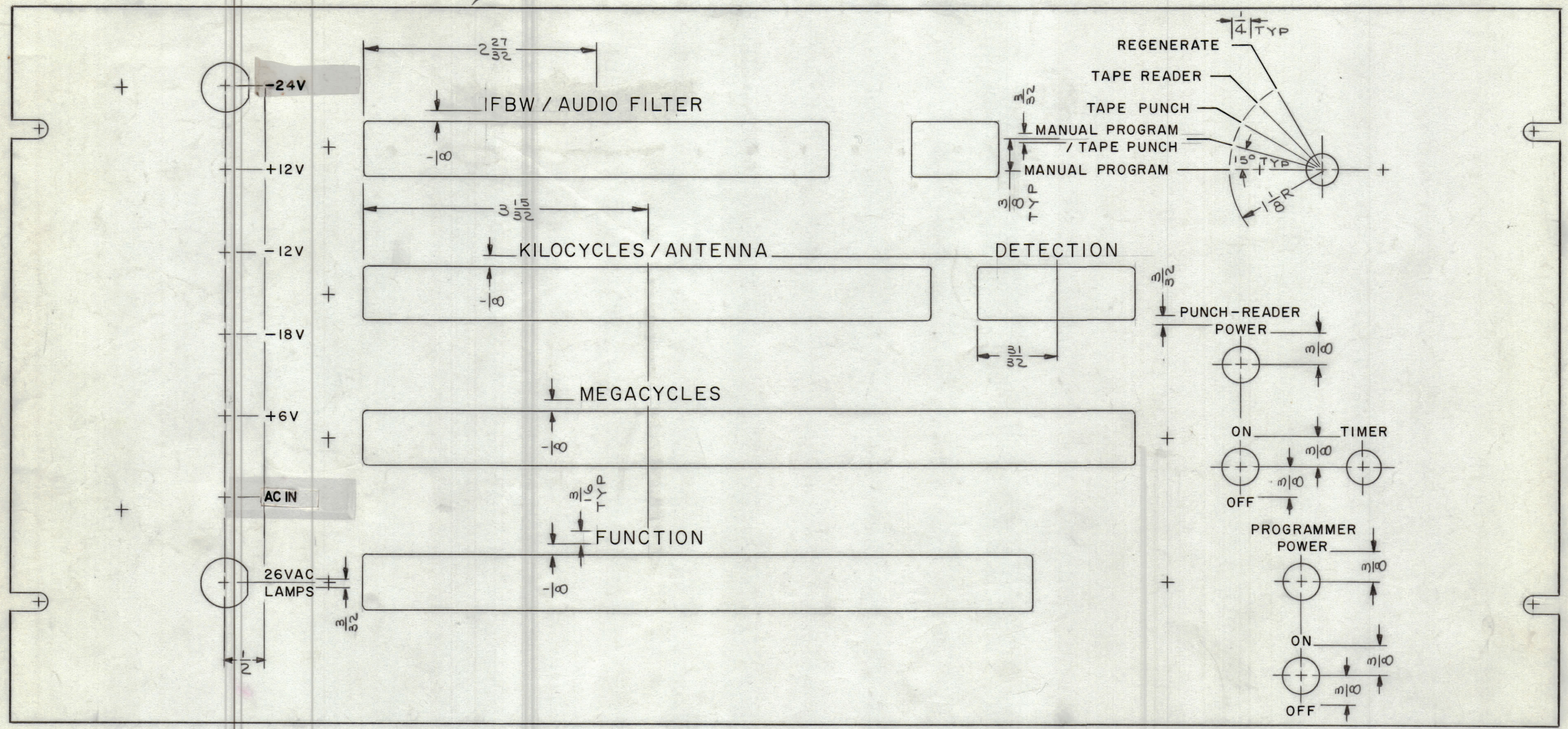


REVISIONS					
ZONE	SYM	DESCRIPTION	DATE	E.M.N. NO.	APPD
X		EXP. RELEASE	1/1/65		JL
Ø		ORIGINAL RELEASE FOR PRODUCTION	5/26/65		JL
A		AC IN WAS 24V & -24V WAS AC IN - REWAS MS4053	7/8/65	14405	W.V. J.P.S. J.E.P.

MARK ON REAR TMC PT. NO. LD1720-MS4053-  
 MARK ON REAR TMC PT. NO. LD1720-MS4053- W/LATEST REV. LETTERS  
 1/8 HIGH BLACK GOTHIC AS PER TMC SPEC. S727.



FRONT VIEW SHOWN

HEIGHT OF LETTER	DEPTH OF STROKE	WIDTH OF STROKE
1/8	.010	.020
3/16	.010	.025
LINES	.010	.015

- ~ UNLESS OTHERWISE SPECIFIED ~
- 1- ALL LETTERING GROUPS TO BE CENTERED ON HOLES.
  - 2- ENGRAVING TO BE 1/8 HIGH GOTHIC.
  - 3- ALL LETTERING & LINEWORK TO BE WHITE FILLED.
  - 4- ALL ENGRAVING PER TMC SPEC. S566.

NOTES

Q'TY./UNIT	MODEL USED ON	ASS'Y. NO.
1	RTPE-1	
SCALE	CODE	

THE CONTENTS OF THIS DRAWING ARE THE EXCLUSIVE PROPERTY OF THE TECHNICAL MATERIEL CORP. ITS UNAUTHORIZED USE OR REPRODUCTION IN WHOLE OR IN PART IS STRICTLY FORBIDDEN.

REF.: MS 4253

REQ'D.	ITEM	PART NUMBER	DESCRIPTION	SYMBOL
F. E. EATON LIST OF MATERIAL				
MATERIAL		THE TECHNICAL MATERIEL CORP. MAMARONECK, NEW YORK		
FINISH		SEE NOTES		
TITLE		MARKING - PANEL, FRONT MARKING PROCESS - ENGRAVING		
DRAWN	J. LESHINSKI	DATE	1/7/65	FINAL APPROVAL
CHECKED		DATE	5/26/65	
ELECT. DES.		DATE		
MECH. DES.	W. JORDAN	DATE	5/25/65	
LD 1720 A				REV. LTR.

LD1720A