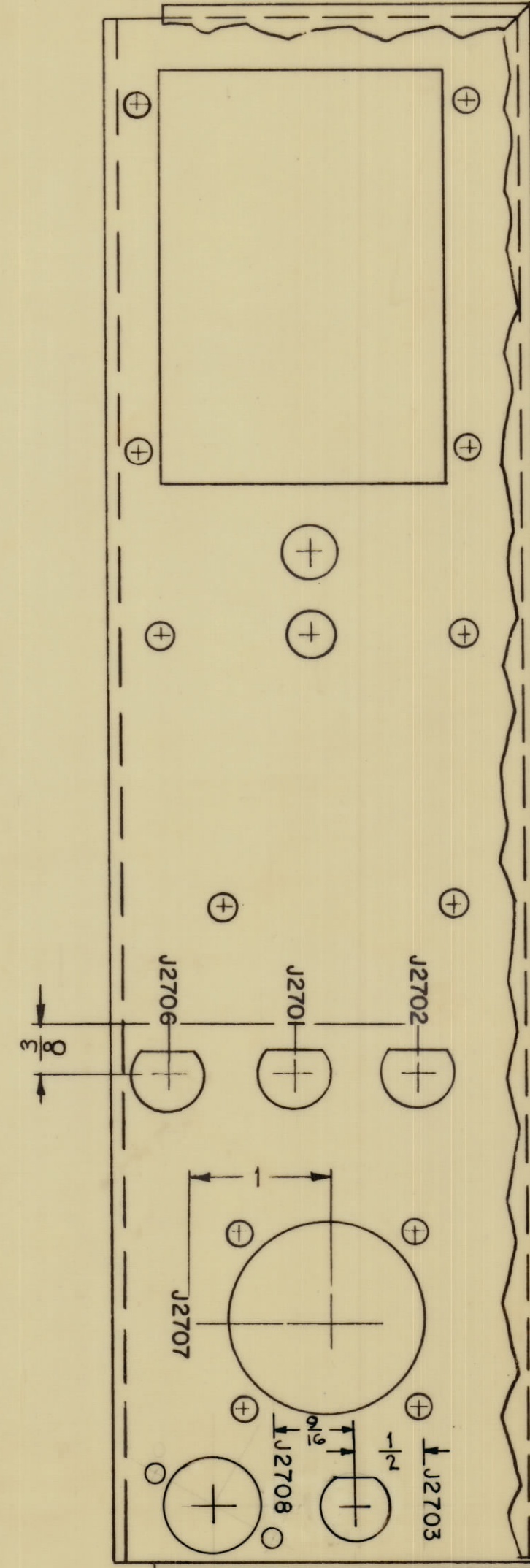
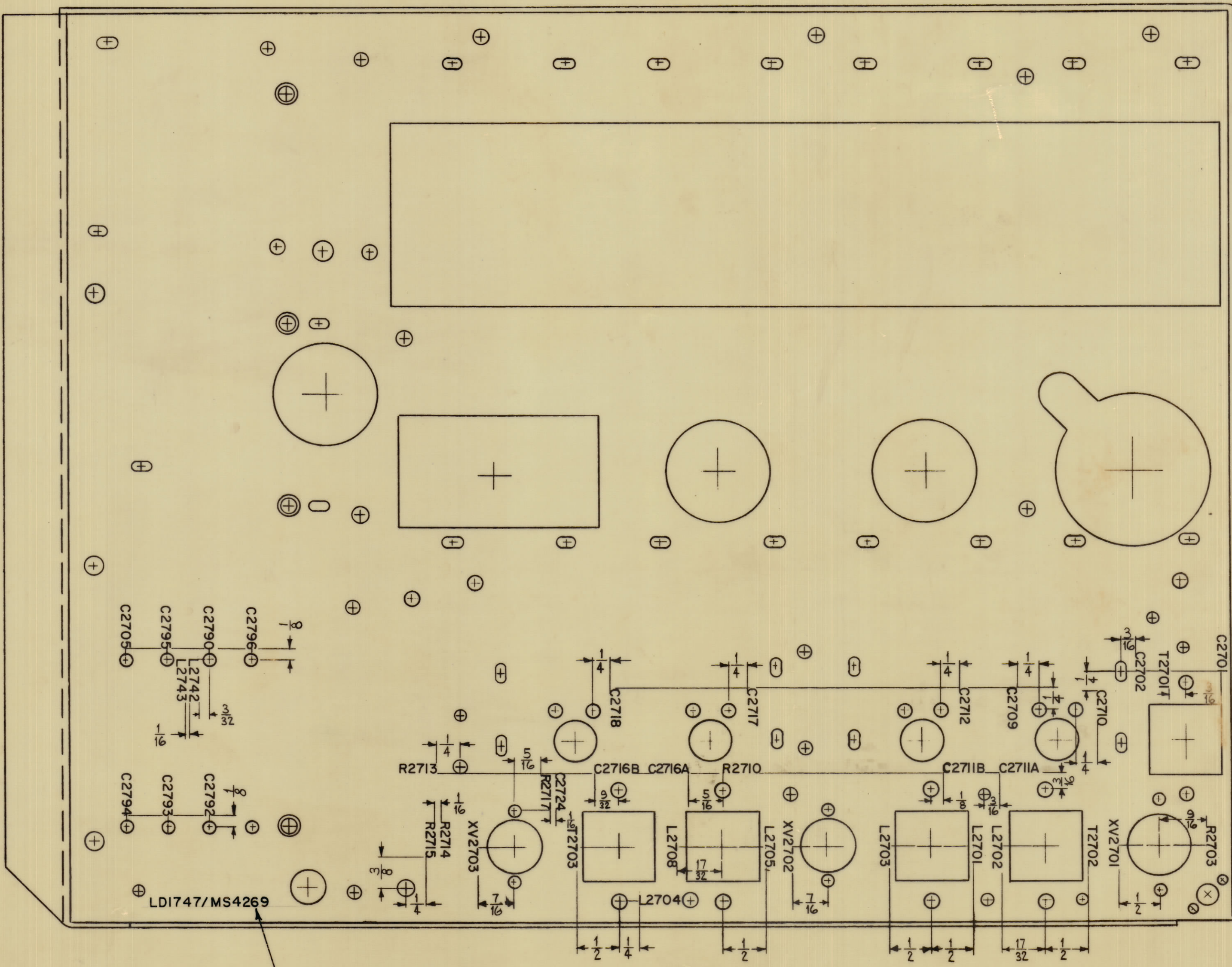


INTERIOR VIEW SHOWN

PART OF LIP REMOVED FOR CLARITY



MARK TMC PART NO. 1/8 HIGH GOTHIC. W/LATEST REV. LETTER.

ALL LETTERING TO BE 1/8 HIGH BLACK GOTHIC.

MARKING PROCESS: AS PER TMC SPECIFICATION S-727

PROPERTY OF THE TECHNICAL MATERIEL CORPORATION
MAMARONECK, NEW YORK

REF-MS-4269

ORIGINAL RELEASE FOR PRODUCTION	2-7-65	HCA	
EXPERIMENTAL RELEASE	2-17-65	HLD	
ISSUE ZONE	DESCRIPTION	DATE	CH. NO. DRAFTS CHECKER ENG. APP.
TOLERANCES		SCALE:	
DEC. DIM. ± FRAC. DIM. ± ANGULAR DIM. ±			
MAXIMUM ALLOWABLE TOLERANCES HAVE BEEN DETERMINED AND ANY DEVIATIONS WILL BE CAUSE FOR REJECTION. REMOVE ALL BURRS AND SHARP EDGES			

REQ. UNIT	MODEL	SECTION	ASBY. NO.	DATE
1	CHG-2B			2-7-65

REQ. ITEM	PART NO.	DESCRIPTION	SYMBOL
		THE TECHNICAL MATERIEL CORP. MAMARONECK, NEW YORK	
		LETTERING, MAIN CHASSIS	
		BOTTOM	
		TYPE & TEMPER	
		HEAT TREAT. SPEC.	
		FINISH & SPEC. NO.	
		LD1747	Ø