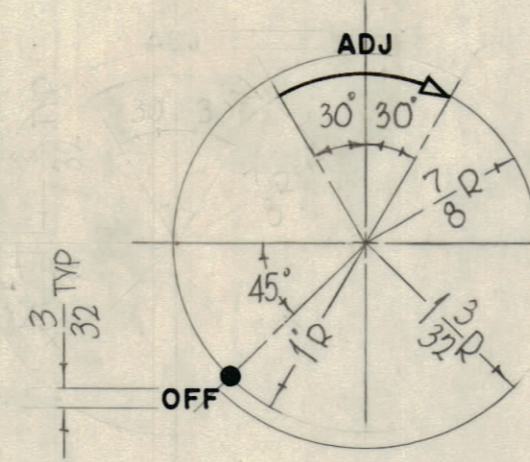
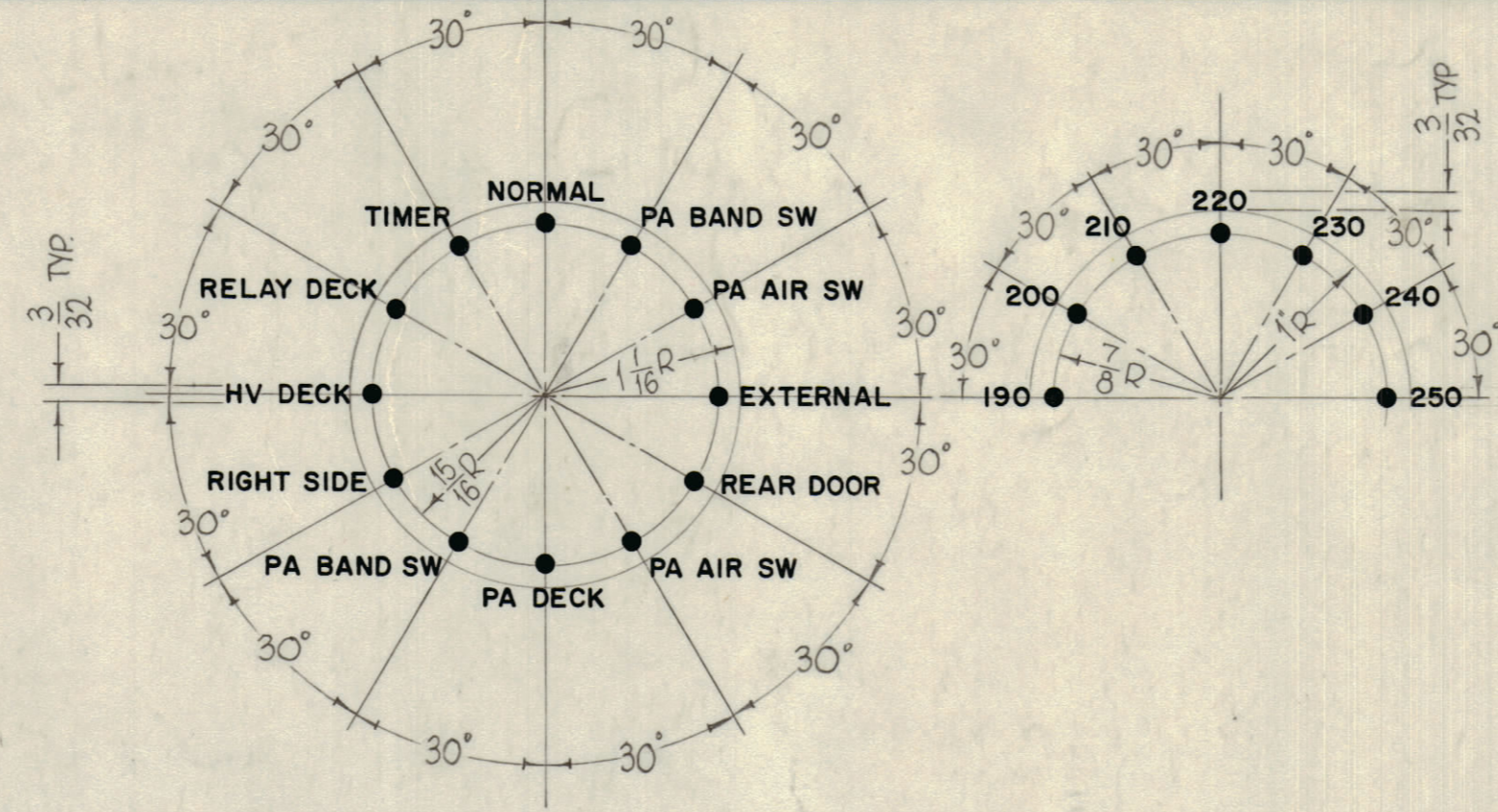
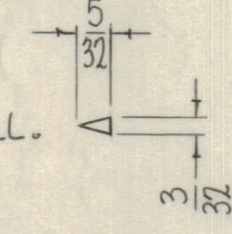


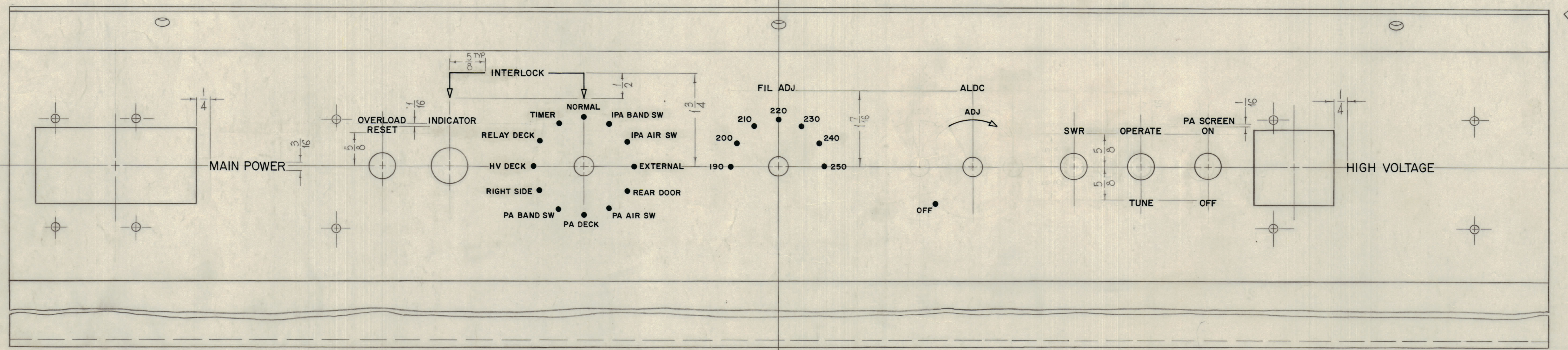
UNLESS OTHERWISE SPECIFIED:

- 1- ALL LETTERS 1/8" HIGH, GOTHIC, WHITE FILLED.
- 2- ALL LETTER GROUPS TO BE CENTERED ON HOLES, CUTOUTS OR INDICATING LINES.
- 3- ALL DOTS 3/32 DIA., WHITE FILLED.
- 4- ALL ARROWHEADS 3/32 X 5/32, WHITE OUTLINE FILL.
- 5- ALL LINES WHITE FILLED.

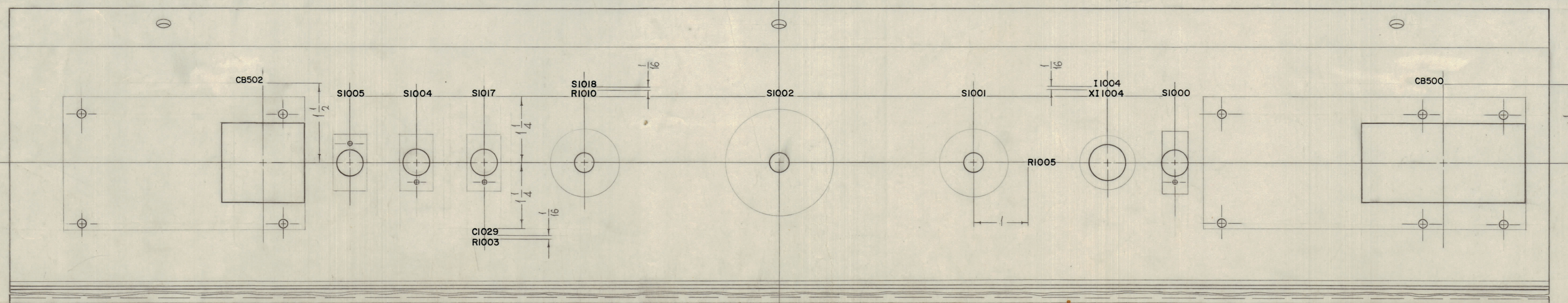


LETTER HEIGHT	DEPTH OF STROKE	WIDTH OF STROKE
3/32	.010	.015
1/8		.020
3/16		.025
DOTS		—
SOLID LINES		.015
ARROW HEADS	.010	—

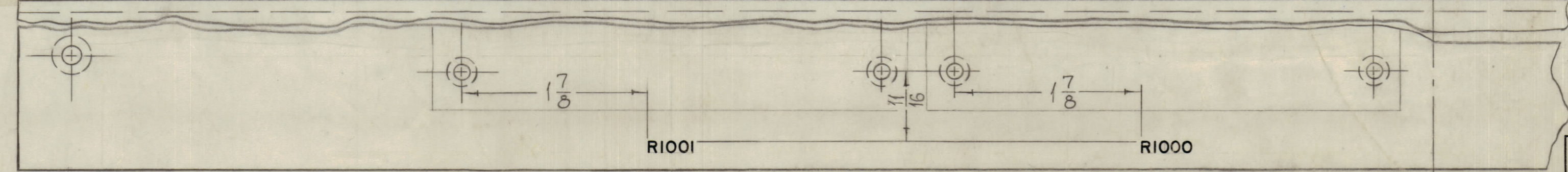
REVISIONS							
ZONE	BYM	DESCRIPTION	DATE	E.M.N. NO.	DRAFT	CHKD	APPD
X		EXPERIMENTAL RELEASE	12-1-64	X	SRG		
X1		CB 500 WAS CB 1000, CB 502 WAS CB 1002	2-23-65	X1	SRG		
Ø		ORIGINAL RELEASE FOR PRODUCTION	5/19/67		CV		JBL



ENGRAVING - AS PER TMC SPEC. S-566 FRONT VIEW SHOWN



MARKING PROCESS: AS PER TMC SPEC. S727, ALL LETERING 1/8" HIGH, BLACK GOTHIC. REAR VIEW SHOWN



VIEW "V-V"

NOTES

QTY/UNIT	MODEL USED ON	ASSY. NO.
SCALE 1:1	CODE A	

REQ'D.	ITEM	PART NUMBER	DESCRIPTION	SYMBOL
F. BUDETTI LIST OF MATERIAL L D S				
MATERIAL				
FINISH				
UNLESS OTHERWISE SPECIFIED DIMENSIONS ARE IN INCHES AND INCLUDE CHEMICALLY APPLIED OR PLATED FINISHES				
DECIMALS	TOLERANCES		FRACTIONS	ANGLES
.X ± .05			± 1/64	
.XX ± .01			± 1/32	
.XXX ± .005			± 0° 30'	

THE TECHNICAL MATERIEL CORP. MAMARONECK, NEW YORK	
TITLE: MARKING, FRONT PANEL	
DRAWN: John C Biele	DATE: 10/23/64
CHECKED:	DATE:
ELECT. DES.:	DATE:
MECH. DES.:	DATE:
SHEET: LD1748	
REV. LTR.:	

LD1748

VIEW V-V MARKING ON THIS SURFACE