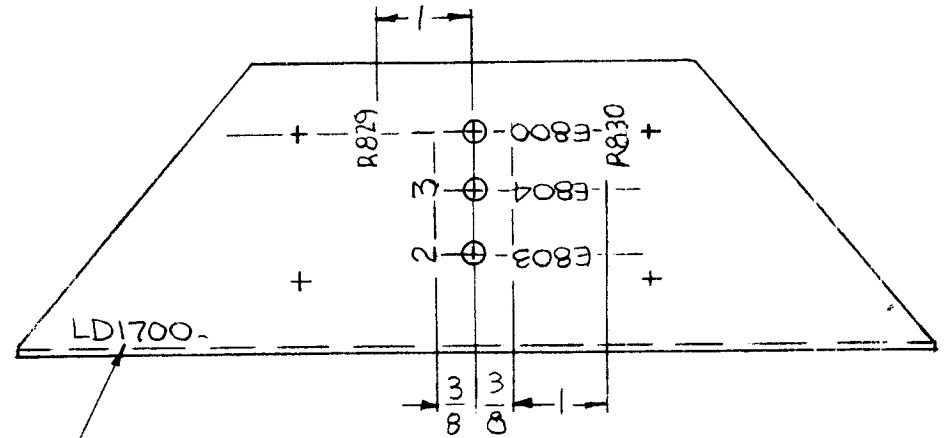
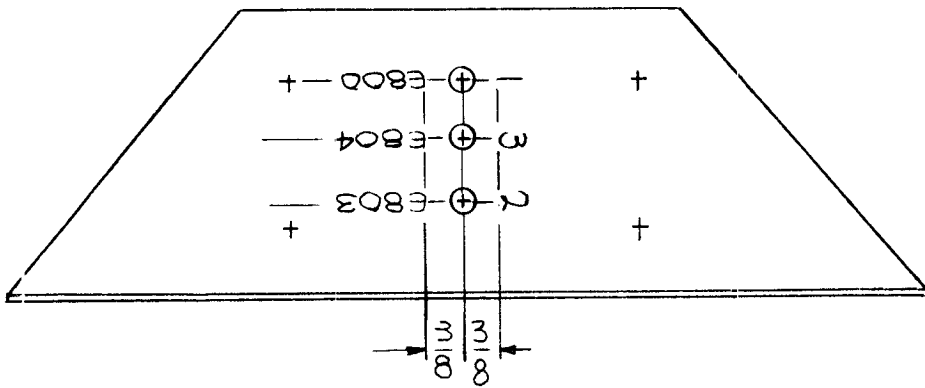


REQ. PER UNIT	USED ON			LD1700	A
	MODEL	ASS'Y. NO.	DATE		
1	GPT-10KLF	AP125	3-1-66		



MARKING PROCESS: AS PER TMC SPECIFICATION S-727.
 LETTERING: 1/8 HIGH BLACK GOTHIC, LOCATED AS SHOWN.

MARK TMC P/N
 1/8 HIGH GOTHIC
 W/LATEST REV.
 LETTER.

REF: MS 4213

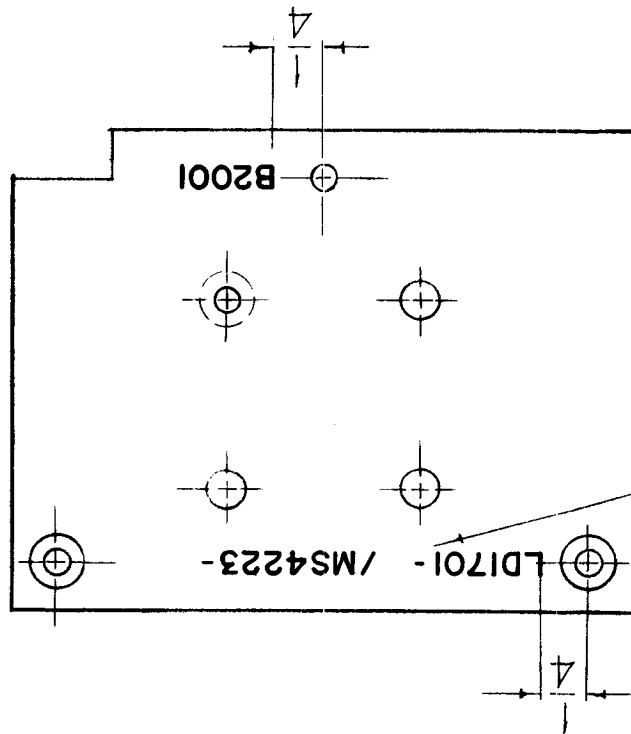
REQ.	ITEM	PART NO.	F. BUDETTI DESCRIPTION				SYMBOL	
			THE TECHNICAL MATERIEL CORP. MAMARONECK, NEW YORK					
A	E800, E803, E804 R829 & R830 ADDED	1-6-67 17619	WHD	QCB	QCB			
Ø	ORIGINAL RELEASE FOR PRODUCTION	3-1-66	AM	Jc	QCB	HL		
SYM	DESCRIPTION	DATE	CH. NO.	DRAFTS	CHECKER	ENG. APP.		
UNLESS OTHERWISE SPECIFIED DIMENSIONS ARE IN INCHES AND INCLUDE CHEMICALLY APPLIED OR PLATED FINISHES		SCALE		1/2				
DECIMALS .X ± .05 .XX ± .01 .XXX ± .005		TOLERANCES		FRACTIONS ± 1/64 ANGLES ± 0° 30'				
		CODE		A				
				TYPE & TEMPER		HEAT TREAT. SPEC.		
				DRAWN		CHECKED		
				FINISH & SPEC. NO.		ELEC. DES. APP. MECH. DES. APP.		
				LD1700		A		

M. A. KLEIN

REPROVAL NO. 440H

23845

REQ. PER UNIT	USED ON			LD1701	Ø
	MODEL	ASS'Y. NO.	DATE		
1	VLLA-1		1-3-65		



MARK TMC PART NO. 1/8 HIGH BLACK GOTHIC WITH LATEST REVISION LETTERS.

UNLESS OTHERWISE SPECIFIED:
ALL MARKING AS PER TMC SPECIFICATION 5727.
ALL LETTERING 1/8 HIGH BLACK GOTHIC.

REF TMC DWG MS 4223

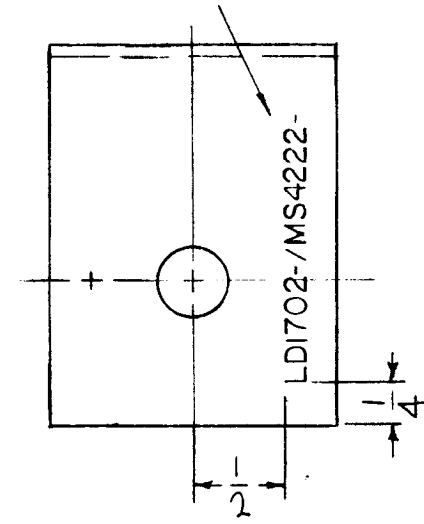
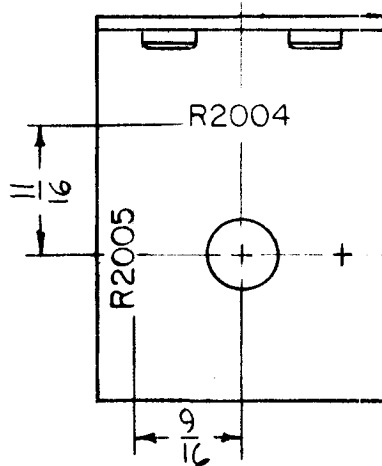
REQ.	ITEM	PART NO.	BUDETTI DESCRIPTION				SYMBOL
			THE TECHNICAL MATERIEL CORP. MAMARONECK. NEW YORK				
			STOCK SIZE				
			MATERIAL				
			TYPE & TEMPER HEAT TREAT. SPEC.				
			FINISH & SPEC. NO.				
			DRAWN CHECKED FINAL APPROVAL				
			ELEC. DES. APP. MECH. DES. APP.				

ORIGINAL RELEASE FOR	11-16-65							
PICTORIAL REVISED	11-11-65	XI						
SYM	DESCRIPTION	DATE	CH. NO.	DRAFTS	CHECKER	ENG. APP.		
UNLESS OTHERWISE SPECIFIED DIMENSIONS ARE IN INCHES AND INCLUDE CHEMICALLY APPLIED OR PLATED FINISHES		SCALE 1:1						
DECIMALS .X ± .05 .XX ± .01 .XXX ± .005	TOLERANCES	FRACTIONS ± 1/64 ANGLES ± 0° 30'	CODE A					

John C Biele JCB
 M. J. D. 11/16/65
 LD1701 Ø
 M/L J. D.
 REPROVAL NO. 440H 21540

REQ. PER UNIT	USED ON			LD1702	∅
	MODEL	ASS'Y. NO.	DATE		
1	VLLA-1		1-3-65		

MARK TMC NO. 1/8 HIGH
BLACK GOTHIC, WITH
LATEST REVISION
LETTERS.



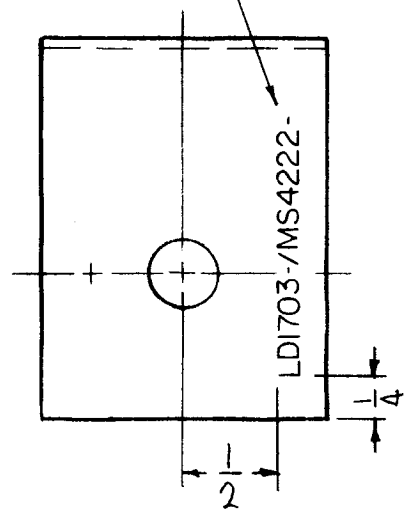
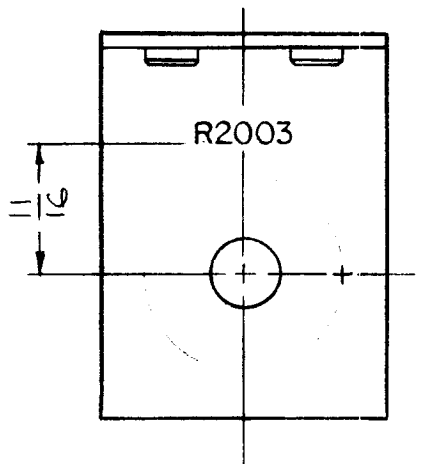
UNLESS OTHERWISE SPECIFIED:
ALL MARKING AS PER TMC SPECIFICATION S727.
ALL LETTERING 1/8 HIGH, BLACK GOTHIC.

REF TMC DWG NO. MS4222

REQ.	ITEM	PART NO.	F. BUDETTI DESCRIPTION				SYMBOL
			THE TECHNICAL MATERIEL CORP. MAMARONECK, NEW YORK				
			MARKING, & BR'KT, VARIABLE RESISTOR MTC.				
			John C Biele				
			TYPE & TEMPER	HEAT TREAT. SPEC.	DRAWN	CHECKED	FINAL APPROVAL
			FINISH & SPEC. NO.				
			ELEC. DES. APP.				
			MECH. DES. APP.				
			LD1702				∅

REQ. PER UNIT	USED ON			LD1703	∅
	MODEL	ASS'Y. NO.	DATE		
1	VLLA-1		1-3-65		

MARK TMC NO. 1/8 HIGH
BLACK GOTHIC. WITH
LATEST REVISION
LETTERS.

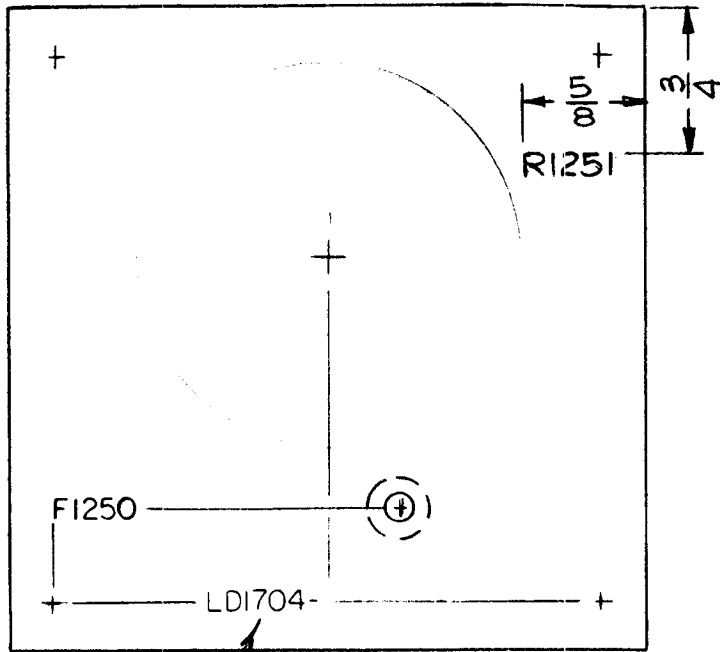


UNLESS OTHERWISE SPECIFIED:
ALL MARKING AS PER TMC SPECIFICATION S727.
ALL LETTERING 1/8 HIGH, BLACK GOTHIC.

REF TMC DWG NO MS4222-

REQ.	ITEM	PART NO.	F. BUDETTI	DESCRIPTION	SYMBOL
			THE TECHNICAL MATERIEL CORP. MAMARONECK, NEW YORK		
			MARKING & BRKT VARIABLE RESISTOR MTG		
∅					
X1	ORIGINAL RELEASE	11-27-65	∅		
X1	MARKING RE-LOCATED	11-6-65	X1		
SYM	DESCRIPTION	DATE	CH. NO.	DRAFTS	CHECKER
UNLESS OTHERWISE SPECIFIED DIMENSIONS ARE IN INCHES AND INCLUDE CHEMICALLY APPLIED OR PLATED FINISHES		SCALE	1:1		
DECIMALS .X ± .05 .XX ± .01 .XXX ± .005	TOLERANCES	FRACTIONS ± 1/64 ANGLES ± 0° 30'	CODE	A	
FINISH & SPEC. NO.		ELEC. DES. APP.	MECH. DES. APP.	LD1703 ∅	

REQ. PER UNIT	USED ON			LD1704	A
	MODEL	ASS'Y. NO.	DATE		
1	GPT-10KLF		11-2-65		



MARKING PROCESS: AS PER TMC SPECIFICATION S-727.
 LETTERING: 1/8 HIGH BLACK GOTHIC, LOCATED AS SHOWN.

MARK TMC PT. NO.
 W/LATEST REV.
 LETTER.

REF: MS 4228-1

SYM	DESCRIPTION	DATE	CH. NO.	DRAFTS	CHECKER	ENG. APP.	REQ. ITEM	PART NO.	F. BUDETTI	DESCRIPTION	SYMBOL	
A	ADDED "R1251"	3/8/66	15875	HCB	<i>[Signature]</i>	<i>[Signature]</i>				THE TECHNICAL MATERIEL CORP. MAMARONECK, NEW YORK		
Ø	ORIGINAL RELEASE	12/21/65	Ø			<i>[Signature]</i>				MARKING, PLATE, PICK-UP LOOP		
										MARKING PROCESS: AS PER TMC SPEC. S-727		
UNLESS OTHERWISE SPECIFIED DIMENSIONS ARE IN INCHES AND INCLUDE CHEMICALLY APPLIED OR PLATED FINISHES		SCALE 1:1										
DECIMALS .X ± .05 .XX ± .01 .XXX ± .005	TOLERANCES	FRACTIONS ± 1/64 ANGLES ± 0° 30'	CODE A									
							TYPE & TEMPER	HEAT TREAT. SPEC.	DRAWN	CHECKED	FINAL APPROVAL	
							FINISH & SPEC. NO.	ELEC. DES. APP.	MECH. DES. APP.		LD1704 A	

LD1705

DATE
4-15-66

USED ON
ASSY. NO.

MODEL
GPT10KLF

REQ. PER
UNIT
1

OBSOLETE

REPLACED BY AM

ORIGINAL RELE

DATE 4/15/66

CHK. NO. \emptyset

DRAFTS

CHECKER

ENG. APP.

[Signature]

UNLESS OTHERWISE SPECIFIED
DIMENSIONS ARE IN INCHES AND INCLUDE
CHEMICALLY APPLIED OR PLATED FINISHES

TOLERANCES

FRACTIONS
 $\pm 1/64$
ANGLES
 $\pm 0^\circ 30'$

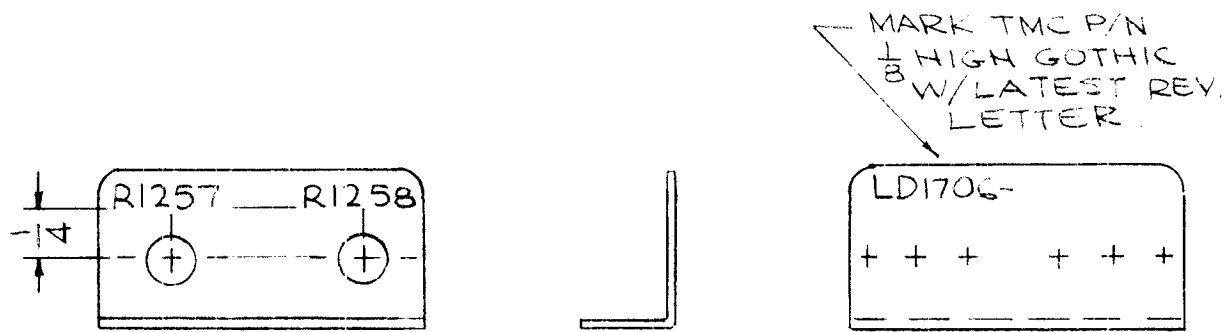
SCALE

CODE

REQ. ITEM	PART NO.	DESCRIPTION	SYMBOL
		BUDETTI	
		THE TECHNICAL MATERIEL CORP. MAMARONECK. NEW YORK	
		MARKING, PICK-UP LOOP, SWR COUPLER	
	STOCK SIZE		
	MATERIAL		
	TYPE & TEMPER	DRAWN	CHECKED <i>[Signature]</i>
	HEAT TREAT. SPEC.	ELEC. DES. APP.	MECH. DES. APP.
	FINISH & SPEC. NO.		LD1705 \emptyset

DECIMALS
.X $\pm .05$
.XX $\pm .01$
.XXX $\pm .003$

REQ. PER UNIT	USED ON			LD1706	Ø
	MODEL	ASSY. NO.	DATE		
1	GPT-10KLF	AX569	3-1-66		



MARKING PROCESS: AS PER TMC SPECIFICATION S-727.

LETTERING: 1/8 HIGH BLACK GOTHIC, LOCATED AS SHOWN.

REF: MS4227

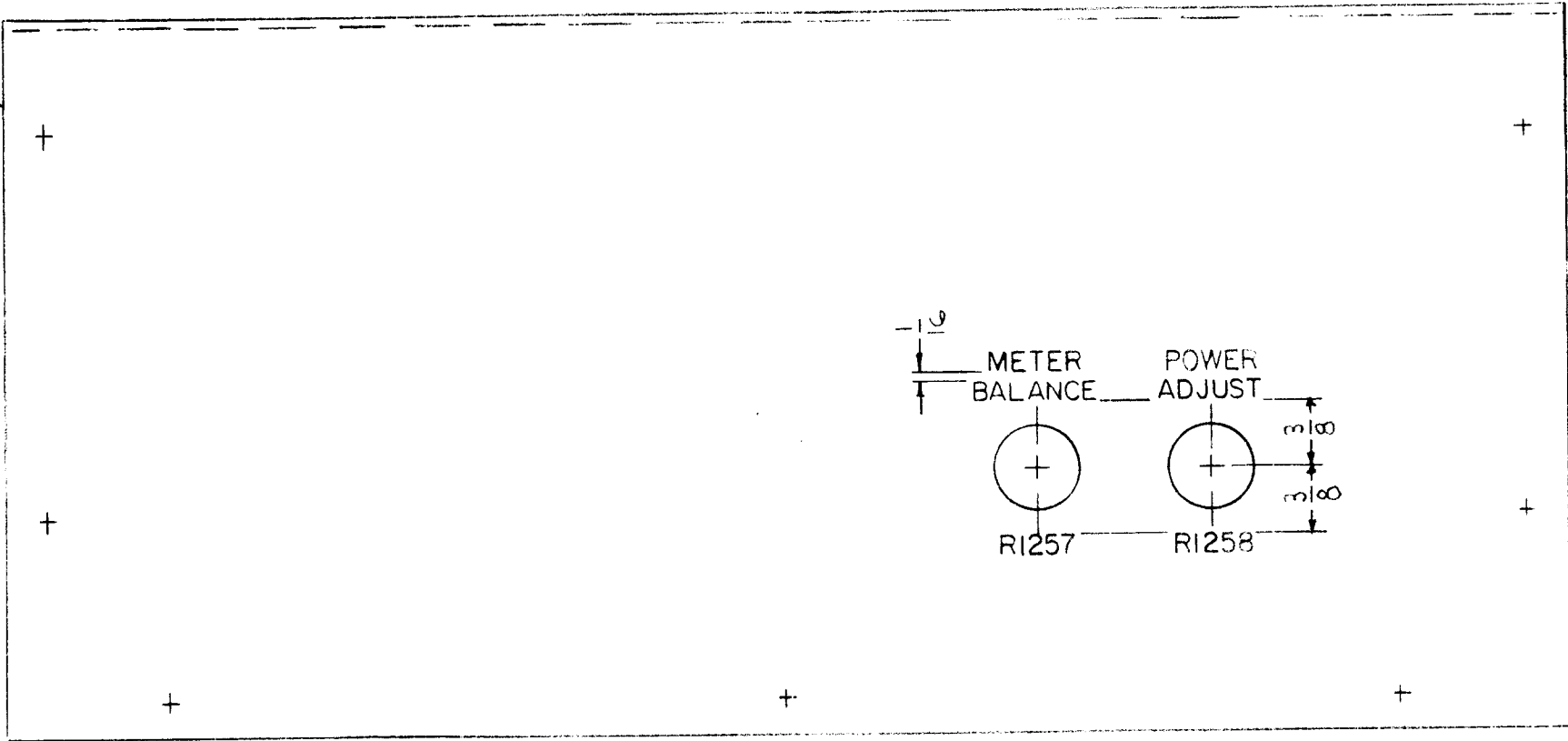
							REQ. ITEM	PART NO.	F. BUDETTI DESCRIPTION	SYMBOL		
									THE TECHNICAL MATERIEL CORP. MAMARONECK. NEW YORK			
								STOCK SIZE	MARKING, BRKT. POTENTIOMETER MTG			
Ø	ORIGINAL RELEASE FOR PRODUCTION	3-1-66	AM	Jc	JCB	Hoe			MARKING PROCESS: AS PER TMC SPEC S727			
SYM	DESCRIPTION	DATE	CH. NO.	DRAFTS	CHECKER	ENG. APP.		MATERIAL				
UNLESS OTHERWISE SPECIFIED DIMENSIONS ARE IN INCHES AND INCLUDE CHEMICALLY APPLIED OR PLATED FINISHES		SCALE	1:1									
							TYPE & TEMPER	HEAT TREAT. SPEC.	DRAWN	CHECKED	FINAL APPROVAL	
DECIMALS: .X ± .05 .XX ± .01 .XXX ± .005		TOLERANCES		FRACTIONS: ± 1/64 ANGLES: ± 0° 30'		CODE					LD1706	Ø
			A				FINISH & SPEC. NO.		ELEC. DES. APP.	MECH. DES. APP.		

MARKING PROCESS: AS PER TMC SPECIFICATION S-727.

REQ. PER UNIT	USED ON			LD1708	Ø
	MODEL	ASS'Y. NO.	DATE		
	GPT-10KLF		11-6-65		

LETTERING: 1/8 HIGH BLACK GOTHIC, LOCATED AS SHOWN.

MARK TMC P/N (LD1708.)
 1/8 HIGH GOTHIC W/LATEST
 REV. LETTER (INSIDE)



MS4226-

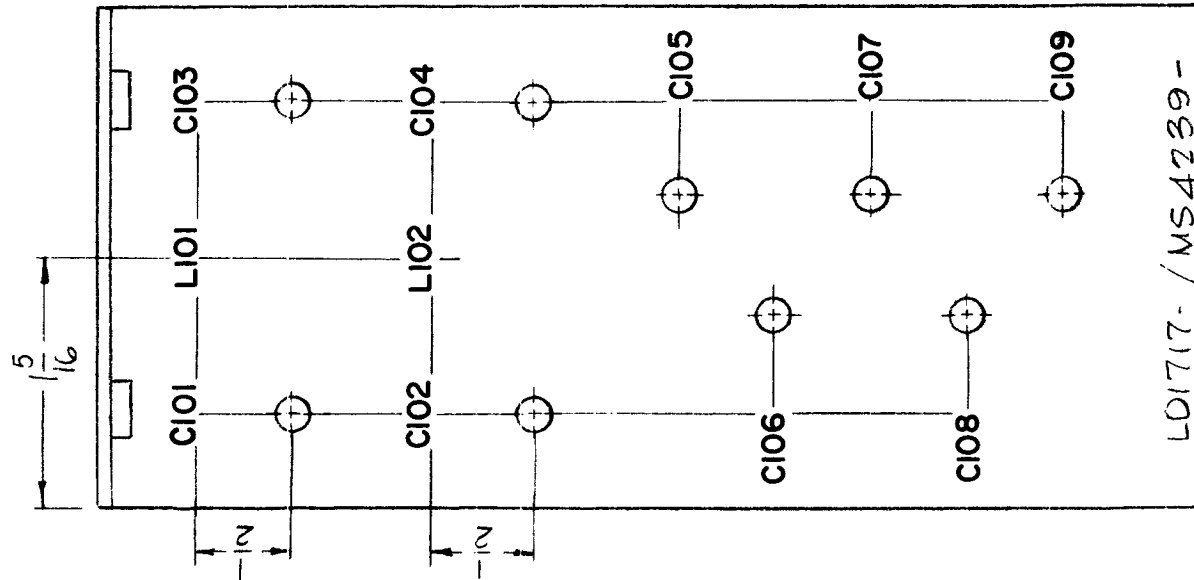
REQ. ITEM	PART NO.	F. BUDETTI DESCRIPTION			SYMBOL	
		THE TECHNICAL MATERIEL CORP. MAMARONECK. NEW YORK				
		MARKING, COVER SWR				
		MARKING PROCESS: AS PER TMC SPEC. S727				
SYM	DESCRIPTION	DATE	CH. NO.	DRAFTS	CHECKER	ENG. APP.
Ø	ORIGINAL RELEASE	12/21/65	Ø			J. De
UNLESS OTHERWISE SPECIFIED DIMENSIONS ARE IN INCHES AND INCLUDE CHEMICALLY APPLIED OR PLATED FINISHES		SCALE				
		1:1				
DECIMALS .X ± .05 .XX ± .01 .XXX ± .005	TOLERANCES	FRACTIONS ± 1/64 ANGLES ± 0° 30'	CODE A			
				TYPE & TEMPER	HEAT TREAT. SPEC.	FINISH & SPEC. NO.
				DRAWN	CHECKED	FINAL APPROVAL
				ELEC. DES. APP.	MECH. DES. APP.	
						LD1708 Ø

ML J. De

REPROVAL NO. 440H

23845

REQ. PER UNIT 1	USED ON			LD1717 Ø
	MODEL TER-25K	ASS'Y. NO.	DATE 12-22-64	



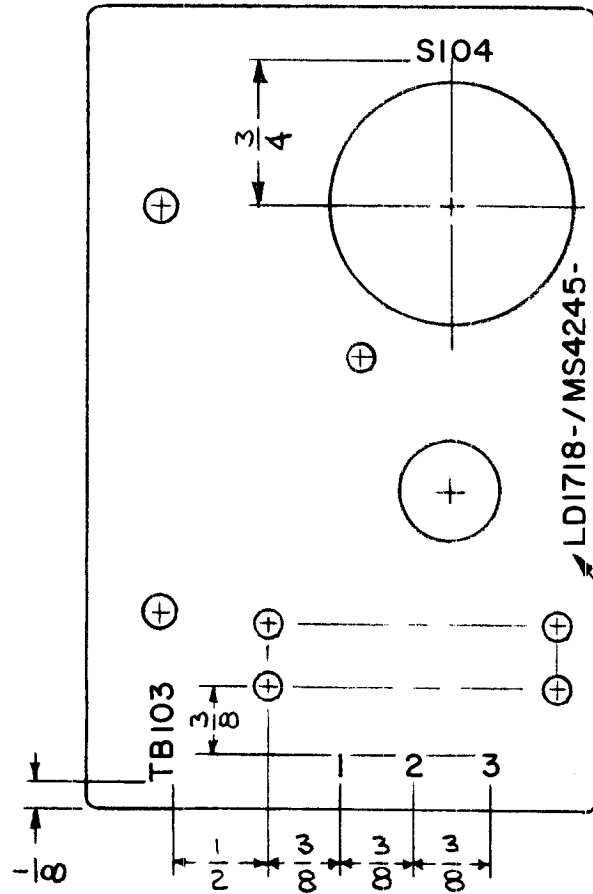
MARKING PROCESS: AS PER TMC SPECIFICATION S-727.

LETTERING: 1/8 HIGH BLACK GOTHIC, LOCATED AS SHOWN.

REF: MS4239

REQ.	ITEM	PART NO.	L. BUTLER DESCRIPTION				SYMBOL
			THE TECHNICAL MATERIEL CORP. MAMARONECK, NEW YORK				
			MARKING, BRACKET, MTG CAPACITOR				
			MARKING PROCESS: AS PER TMC SPEC S-727				
Ø	ORIGINAL RELEASE FOR PRODUCTION	12-22-64	X	SRG			
SYM	DESCRIPTION	DATE	CH. NO.	DRAFTS	CHECKER	ENG. APP.	
UNLESS OTHERWISE SPECIFIED DIMENSIONS ARE IN INCHES AND INCLUDE CHEMICALLY APPLIED OR PLATED FINISHES		SCALE	1:1				
TOLERANCES		CODE	A				
DECIMALS .X ± .05 .XX ± .01 .XXX ± .005		FRACTIONS ± 1/64 ANGLES ± 0° 30'					
TYPE & TEMPER		HEAT TREAT. SPEC.		DRAWN		CHECKED	FINAL APPROVAL
FINISH & SPEC. NO.		ELEC. DES. APP.		MECH. DES. APP.		LD1717 Ø	

REQ. PER UNIT	USED ON			LD1718 \emptyset
	MODEL	ASS'Y. NO.	DATE	
1	TER-25K-6008		JAN 5, 1965	



MARKING PROCESS: AS PER TMC SPECIFICATION S-727.
 LETTERING: 1/8 HIGH BLACK GOTHIC, LOCATED AS SHOWN.

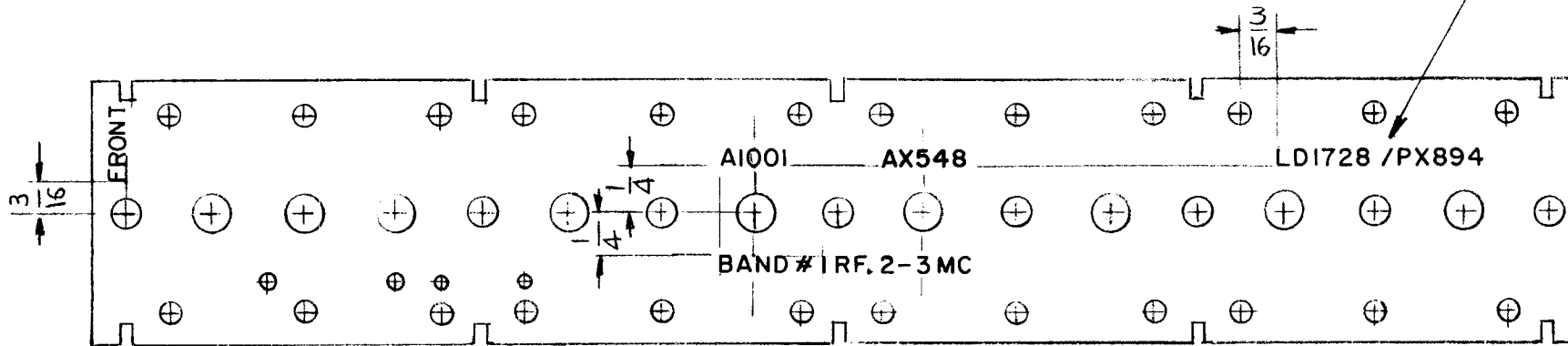
MARK TMC P/N WITH LATEST REV. LETTERS

REF.: MS4245

REQ.	ITEM	PART NO.	DESCRIPTION				SYMBOL
			THE TECHNICAL MATERIEL CORP. MAMARONECK, NEW YORK				
			MARKING, PLATE, MTG, SWITCH				
			MARKING PROCESS: TMC S727				
					1.8.65	PCB	236/9/65
			TYPE & TEMPER	HEAT TREAT. SPEC.	DRAWN	CHECKED	FINAL APPROVAL
			FINISH & SPEC. NO.				ELEC. DES. APP. MECH. DES. APP.
			LD1718 \emptyset				

REQ. PER UNIT	USED ON			LD1728 \emptyset
	MODEL	ASS'Y. NO.	DATE	
1	CHG-3		1-13-64	

MARK TMC P/No. WITH LATEST REV. LETTER



FRONT AS SHOWN

MARKING PROCESS: AS PER TMC SPECIFICATION S-727.

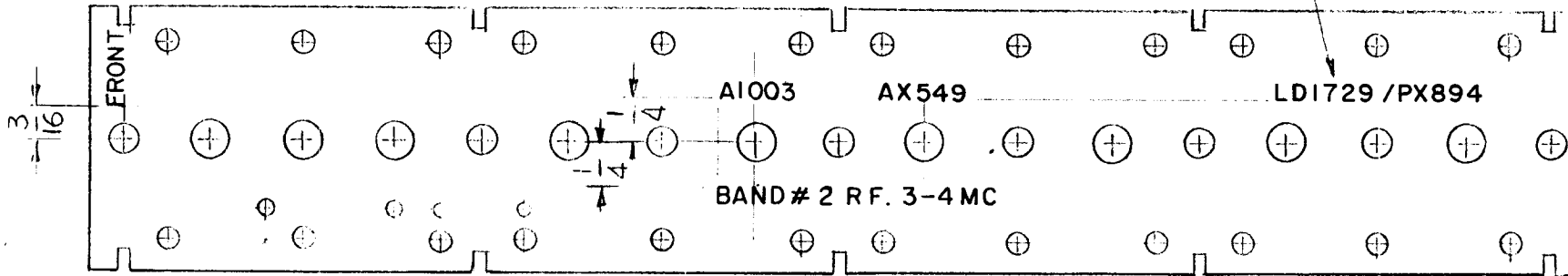
LETTERING: 3/32 HIGH BLACK GOTHIC, LOCATED AS SHOWN.

REF. PX 894

\emptyset		3/12/64		G.D.L.	<i>JM</i>	<i>Jr</i>	REQ. ITEM	PART NO.	DESCRIPTION	SYMBOL	
X2	LETTERING TMC P/No. ADDED	3-18-65		G.D.L.	<i>Kg</i>				THE TECHNICAL MATERIEL CORP. MAMARONECK. NEW YORK		
X1	AX 548 ADDED	2-11-65		G.D.L.	<i>[Signature]</i>			STOCK SIZE		MARKING, RF. TERMINAL BOARD	
X	EXPER. RELEASE	1-13-64		G.D.L.					BAND # 1		
SYM	DESCRIPTION	DATE	CH. NO.	DRAFTS	CHECKER	ENG. APP.	MATERIAL				
UNLESS OTHERWISE SPECIFIED DIMENSIONS ARE IN INCHES AND INCLUDE CHEMICALLY APPLIED OR PLATED FINISHES		SCALE		1:1			G.D.L.	<i>[Signature]</i>	<i>[Signature]</i>	<i>[Signature]</i>	
				TYPE & TEMPER		HEAT TREAT. SPEC.	DRAWN	CHECKED	FINAL APPROVAL		
DECIMALS X \pm .05 XX \pm .01 XXX \pm .005	TOLERANCES	FRACTIONS \pm 1/64 ANGLES \pm 0° 30'	CODE A				<i>[Signature]</i>			LD1728 \emptyset	
				FINISH & SPEC. NO.		ELEC. DES. APP.	MECH. DES. APP.				

FIG. PART UNIT	UNID. CH		DATE	LD1729 Ø
	MODEL	APPY. NO.		
1	CHG-3		1-13-64	

MARK TMC P/No. WITH LATEST REV. LETTER



FRONT AS SHOWN

MARKING PROCESS: AS PER TMC SPECIFICATION S-727.

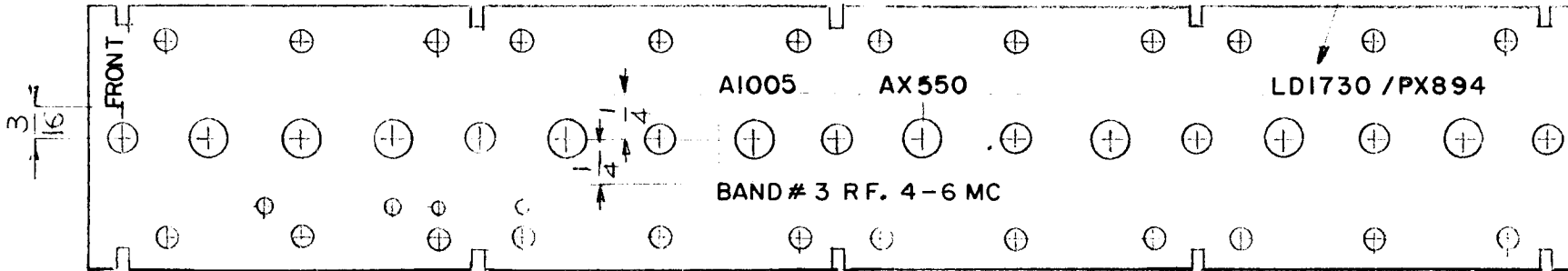
LETTERING: 3/32 HIGH BLACK GOTHIC, LOCATED AS SHOWN.

REF. PX 894

Ø	ORIGINAL RELEASE FOR PRODUCTION	3-12-64					REQ. HED	PAGE NO.	DESCRIPTION	SYMBOL	
	X2 LETTERING TMC P/No	ADDEL 3-18-64	G.D.L.						THE TECHNICAL MATERIEL CORP. MAMARONECK, NEW YORK		
X	AX 549	2-11-64						STOCK SIZE	MARKING, RF. TERMINAL BOARD		
X	EXPER. RELEASE	1-13-64	G.D.L.						BAND # 2		
SYM	DESCRIPTION	DATE	CH. NO.	DRAWN	CHECKED	ENG. APP.	MATERIAL				
UNLESS OTHERWISE SPECIFIED DIMENSIONS ARE IN INCHES AND INCLUDE CHEMICALLY ENGRAVED OR ENGRAVED FINISHES		SCALE	1:1							G.D.L.	
DECIMALS X ± .05 XX ± .01 XXX ± .005	FRACTIONS ± 1/64 ANGLES ± 0° 30'	CODE	A				TYPE & TEMP.			DRAWN	CHECKED
						FIN. H & SPEC. NO.			REC. DATE	1-13-64	LD1729 Ø

1. QTY. FOR UNIT	USED ON		DATE	LD1730 ϕ
	MODEL	ASSEMBLY		
1	CIC-3		1-13-64	

MARK TMC P/NO. WITH
LATEST REV. LETTER



FRONT AS SHOWN

MARKING PROCESS: AS PER TMC SPECIFICATION S-727.

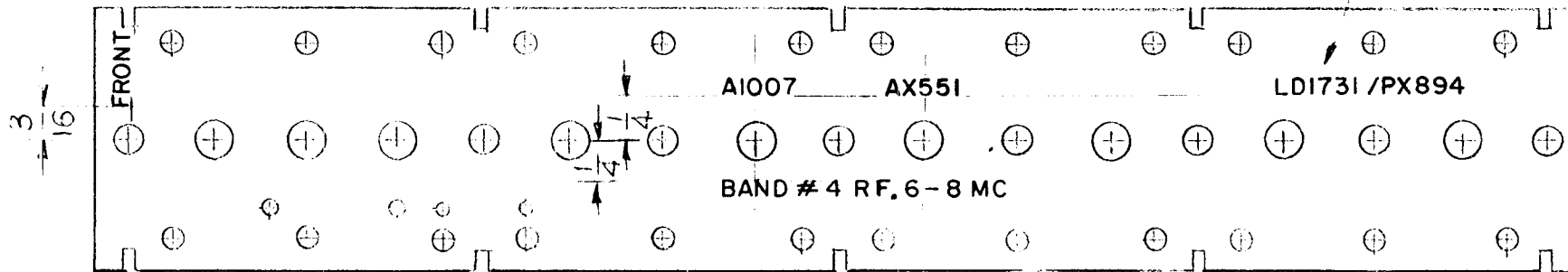
LETTERING: 3/32 HIGH BLACK GOTHIC, LOCATED AS SHOWN.

REF. PX 894

ϕ	ORIGINAL RELEASE FOR PRODUCTION	3-10-64		G.D.L.			ITEM	PART NO.	DESCRIPTION	REV.
X2	LETTERING TMC P/NO ADD'D	3-18-64		G.D.L.			STOCK SIZE		THE TECHNICAL MATERIEL CORP. MAMARONECK, NEW YORK	
X1							MATERIAL		MARKING, RF. TERMINAL BOARD	
X	EXPER. RELEASE	1-13-64		G.D.L.					BAND # 3	
SYM	DESCRIPTION	DATE	CH. NO.	DRAWN	CHECKER	ENG. APP.			G.D.L.	
UNLESS OTHERWISE SPECIFIED DIMENSIONS ARE IN INCHES AND INCLUDE CHAMFERED EDGES UNLESS OTHERWISE SPECIFIED		SCALE		1:1					WN	CHECKED
DECIMALS .X ± .05 .XX ± .02 .XXX ± .005	TOLERANCES	FRACTIONS ± 1/64 ANGLES ± 0° 30'		CODE						FINAL APPROVAL
		A								LD1730 ϕ

REQ. PER UNIT	USED ON			LD1731 \emptyset
	MODEL	ASSEMBLY NO.	DATE	
1	CW-3		1-13-64	

MARK TMC P/NO. WITH LATEST REV. LETTER



FRONT AS SHOWN

MARKING PROCESS: AS PER TMC SPECIFICATION S-727.

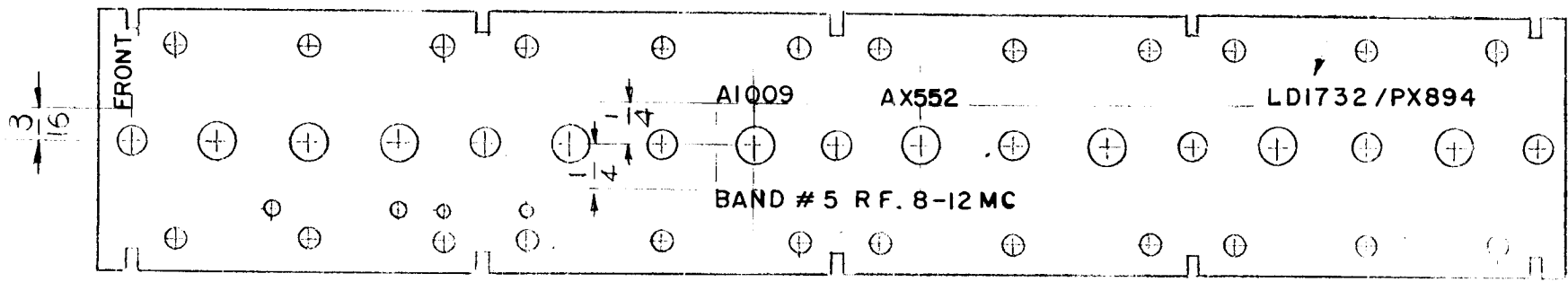
LETTERING: 3/32 HIGH BLACK GOTHIC, LOCATED AS SHOWN.

REF. TX 894

\emptyset	ORIGINAL RELEASE FOR PRODUCTION	3-19-57		G.D.L.			REQ. IT	PART NO.	DESCRIPTION	SYMBOL		
X2	LETTERING TMC P/NO. ALL	3-18-57		G.D.L.					THE TECHNICAL MATERIAL CORP. MAMARONECK, NEW YORK			
X1	AX 551 ADDE	2-11-63		G.D.L.				STOCK NO.	MARKING, RF. TERMINAL BOARD			
X	EXPER. RELEASE	1-13-64		G.D.L.					BAND #4			
SYM	DESCR	DATE	CH. NO.	DRAFTS	CHECKER	ENG. APP.						
UNLESS OTHERWISE SPECIFIED DIMENSIONS ARE IN INCHES AND INCLUDE CHEMICAL TREATMENT OR HEAT FINISHES		SCALE		1:1					G.D.L.			
DECIMALS: .X \pm .05 .XX \pm .01 .XXX \pm .005		FRACTIONS: \pm 1/64 ANGLES: \pm 0° 30'		CODE	A			TYPE & YEL	HEAT TREAT. SP	DRAWN	CHECKED	FINAL APPROVAL
							FINISH	NO.	ELEC. DES. APP.	TECH. DES. APP.	LD1731 \emptyset	

REQ. PER UNIT	USED ON			LD1732 \emptyset
	MODEL	APPY. NO.	DATE	
1	CHG-3		1-13-66	

MARK TMCP/NO WITH LATEST REV. LETTER



FRONT AS SHOWN

MARKING PROCESS: AS PER TMC SPECIFICATION S-727.

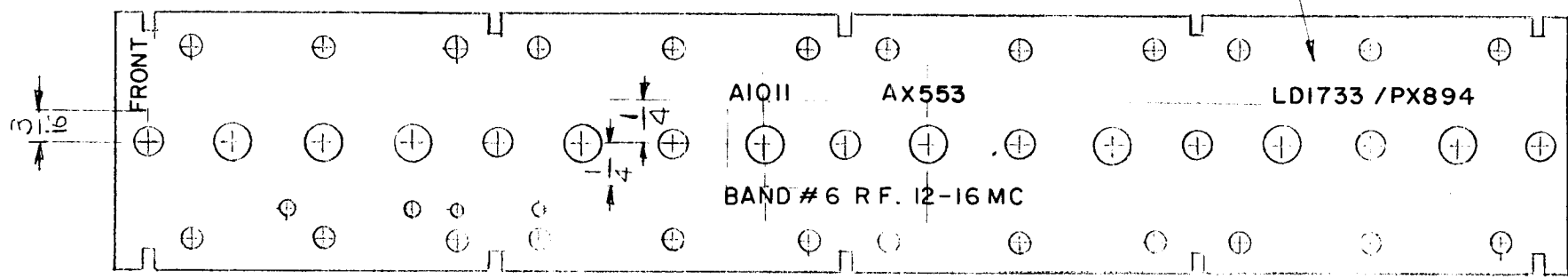
LETTERING: 3/32 HIGH BLACK GOTHIC, LOCATED AS SHOWN.

REF. 1732

\emptyset	ORIGINAL RELEASE FOR PRODUCTION	5-12-66					REQ. ITEM	PART. NO.	DISC.	SYMBOL	
X2	LETTERING TMCP/NO. ADJUST	3-18-66	G.D.L.						THE TECHNICAL MATERIEL CORP. MAMARONECK, NEW YORK		
X	AX552	2-11-66	G.D.L.						MARKING, RF. TERMINAL BOARD		
X	EXPER. RELEASE	1-13-66	G.D.L.						BAND #5		
SYM	DESCRIPTION	DATE	CH. NO.	DRAFTS	CHECKER	ENG.	MATERIAL				
UNLESS OTHERWISE SPECIFIED DIMENSIONS ARE IN DECIMALS AND INCLUDE CHEMICALLY TREATED FINISHES		SCALE	1:1								
DECIMALS X \pm .05 XX \pm .01 XXX \pm .005	FRACTIONS \pm 1/64 ANGLES \pm 0° 30'	CODE	A					TYPE & TEMPER	HEAT. TREAT.	DRAWN	CHECKED
							FINISH & TOL.				
										LD1732 \emptyset	

PROJ. FILE UNIT	USED ON		DATE	LDI733	Ø
	MODEL	ASSY. NO.			
1	CALC. 3		1-15-66		

MARK TMC P.N.O. WITH
LATEST REV. LETTERING



FRONT AS SHOWN

MARKING PROCESS: AS PER TMC SPECIFICATION S-727.

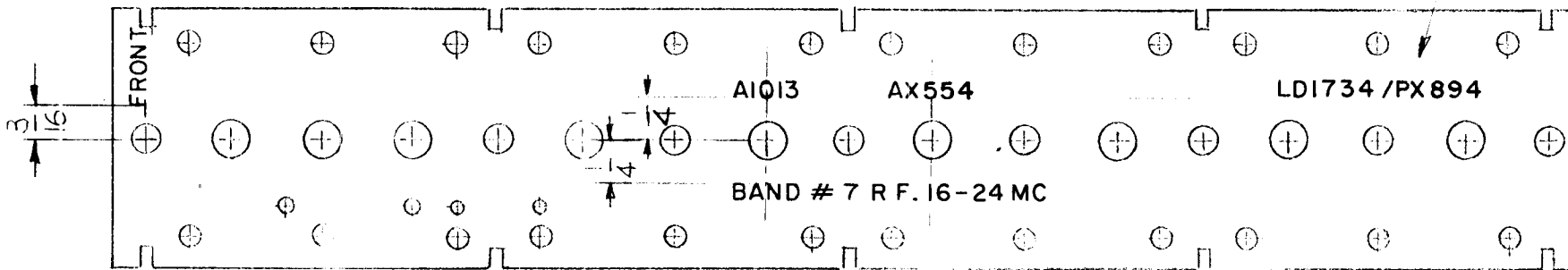
LETTERING: 3/32 HIGH BLACK GOTHIC, LOCATED AS SHOWN.

REF. PX 894

Ø	ORIGINAL RELEASE FOR PRODUCTION	3-19-65		G.D.L.	<i>MM</i>		Q. ITEM	PART NO.	DESCRIPTION	SYMBOL	
X2	LETTERING TMC P.N.O. MODEL	3-18-65			<i>3</i>				THE TECHNICAL MATERIALS CORP. MAMARONECK, NEW YORK MARKING, R.F. TERMINAL BOARD BAND #6		
X1	AX553	2-14-65			<i>MM</i>						
X	EXPER. RELEASE	1-13-65		G.D.I.							
SYH	DESCRIPTION	DATE	CIL. NO.	DRAFTS	ENGINEER	ENG. APP.	MATERIAL				
UNLESS OTHERWISE SPECIFIED DIMENSIONS ARE IN INCHES AND INCLUDE CHEMICAL FINISH OR PLATED FINISHES		SCALE		1:1			TYPE & QUANTITY PER HEAT TREAT. SPEC.		DESIGNED	CHECKED	FINAL
DECIMALS	FRACTIONS	CODE									
.X ± .01	1/64	A									
.XX ± .01	ANGLES										
.XXX ± .005	± 0° 30'										
								BY SPEC. NO.	ELECTRICAL SPEC. NO.	LDI733	Ø

REQ. PER UNIT	MODEL	USED ON	DATE	LD1734 \emptyset
1	ALC-3	ASBY. NO.	1-13-67	

MARK TMC P/No. WITH LATEST REV. LETTER



FRONT AS SHOWN

MARKING PROCESS: AS PER TMC SPECIFICATION S-727.

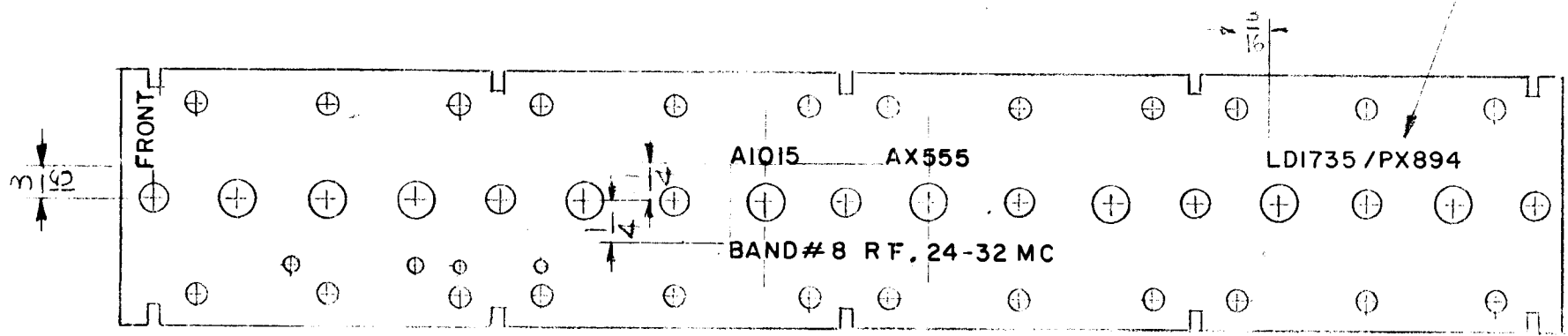
LETTERING: 3/32 HIGH BLACK GOTHIC, LOCATED AS SHOWN.

REF. PX 894

ORIGINAL RELEASE FOR PRODUCTION		3-7-67	G.D.L.	<i>[Signature]</i>	REQ. ITEM	PART NO.	DESCRIPTION	SYMBOL	
X ₂	LETTERING TMC P/No.	1-13-67	G.D.L.	<i>[Signature]</i>			THE TECHNICAL MATERIAL CORP. ELMHURST, N.Y.		
X ₁	AX554 AX554	2-11-65	G.D.L.	<i>[Signature]</i>			MARKING, RF. TERMINAL BOARD		
X	EXPER. RELEASE	1-13-64	G.D.L.				BAND # 7		
SYMBOL	DESCRIPTION	DATE	CH. NO.	DRAFTS	CHECKER	ENG. APP.	MATERIAL		
	UNLESS OTHERWISE SPECIFIED DIMENSIONS ARE IN INCHES AND INCLUDE UNLESS OTHERWISE SPECIFIED FINISHES	SCALE	1:1					G.D.L.	<i>[Signature]</i>
DECIMALS	FRACTIONS	CODE						DRAWN	CHECKED
X ± .05	± 1/64	A						<i>[Signature]</i>	
XX ± .01	ANGLES								
XXX ± .005	± 0° 30'								
FINISH & SPEC. NO.							LD1734	\emptyset	

I.D. P/NO. UNIT	USED ON		DATE	LDI735	∅
	MODEL	ASSEMB. NO.			
1	CIP-3		1-13-66		

MARK TMC P/NO. WITH LATEST REV. LETTER.



FRONT MARKING

MARKING PROCESS: AS PER TMC SPECIFICATION S-117.

LETTERING: 3/32 HIGH BLACK GOTHIC, LOCATED AS SHOWN.

REF. PX 894

ORIGINAL RELEASE FOR PRODUCTION		3-10-65					REC. ITEM	PART NO.	THE TECHNICAL MATERIAL CORP. MAMARONECK, N.Y.		SYMBOL
X2	LETTERING TMC P/NO	3-13-65		G.D.L.				STOCK SIZE	MARKING, RF. TERMINAL BOARD		
X1	AX 555								BAND # 8		
X	EXPER. RELEASE	1-13-66		G.D.L.							
SYM	DESCRIPTION	DATE	CH. NO.	DRAFTS	CHECKER	ENG. APP.	MATERIAL				
UNLESS OTHERWISE SPECIFIED DIMENSIONS ARE IN INCHES AND INCLUDE CHROMIUM PLATED OR LEAD FINISHES		SCALE		1:1					G.D.L.		
DIMENSIONS ARE IN INCHES AND INCLUDE CHROMIUM PLATED OR LEAD FINISHES		SCALE		1:1					DRAWN		
DIMENSIONS ARE IN INCHES AND INCLUDE CHROMIUM PLATED OR LEAD FINISHES		SCALE		1:1					CHECKED		
DIMENSIONS ARE IN INCHES AND INCLUDE CHROMIUM PLATED OR LEAD FINISHES		SCALE		1:1					FILED		
DIMENSIONS ARE IN INCHES AND INCLUDE CHROMIUM PLATED OR LEAD FINISHES		SCALE		1:1					APPROVED		
DIMENSIONS ARE IN INCHES AND INCLUDE CHROMIUM PLATED OR LEAD FINISHES		SCALE		1:1					PART NO.		LDI735
DIMENSIONS ARE IN INCHES AND INCLUDE CHROMIUM PLATED OR LEAD FINISHES		SCALE		1:1					REV.		∅

PRELIMINARY DRAWING

REQ. PER UNIT

RAK-102

USED ON

MODEL

ASS'Y. NO.

DATE

LD1740



Not For Production

OBSOLETE

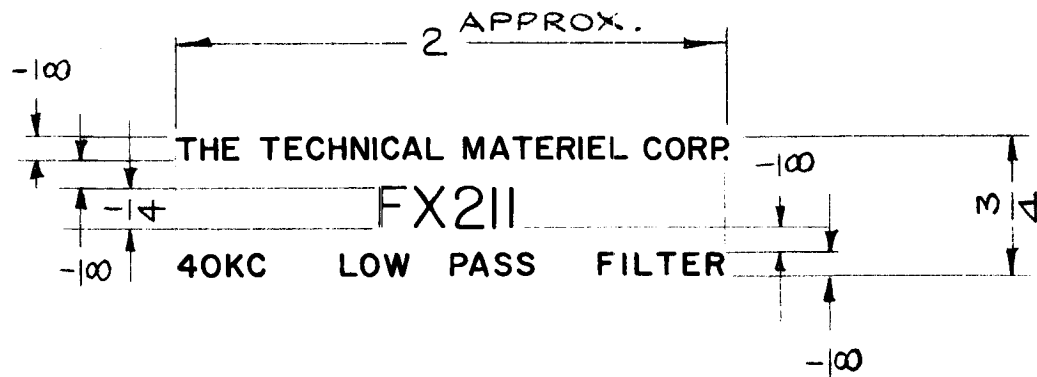
REPLACED BY NO LONGER REQ

1-20-66

Maggie

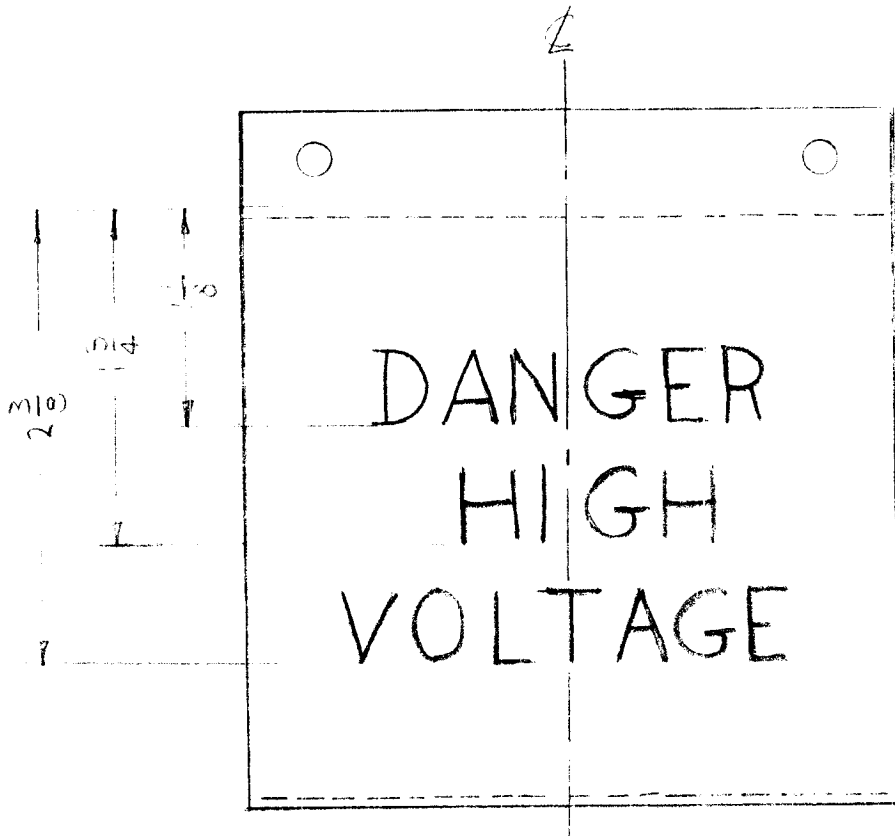
REQ.	ITEM	PART NO.	DESCRIPTION				SYMBOL
			THE TECHNICAL MATERIEL CORP. MAMARONECK. NEW YORK				
			MARKING, BOARD, COMPONENT				
			ORIGINAL RELEASE 1/20/66				
ISSUE	ITEM	CHANGED FROM	DATE	CH. NO.	DRAFTS	CHECKER	ENG. APP.
							<i>file</i>
TOLERANCES			SCALE:				
DEC. DIM. ±			MAXIMUM ALLOWABLE TOLERANCES HAVE BEEN DETERMINED AND ANY DEVIATIONS WILL BE CAUSE FOR REJECTION. REMOVE ALL BURRS AND SHARP EDGES				
FRAC. DIM. ±							
ANGULAR DIM. ±							
TYPE & TEMPER		HEAT TREAT. SPEC.	DRAWN	CHECKED	FINAL APPROVAL		
FINISH & SPEC. NO.		ELEC. DES. APP.	MECH. DES. APP.	LD1740			

REQ. PER UNIT	USED ON			LD1741	Ø
	MODEL	ASS'Y. NO.	DATE		
	FX 211	A4135			



SYM	DESCRIPTION	DATE	CH. NO.	DRAFTS	CHECKER	ENG. APP.	REQ. ITEM	PART NO.	DESCRIPTION	SYMBOL	
Ø	ORIGINAL RELEASE PRODUCTION	4-29-65	Ø	JL					THE TECHNICAL MATERIEL CORP. MAMARONECK, NEW YORK RUBBER STAMP, FIXED TYPE (IDENTIFICATION)	Ø	
X1	CO. NAME CLARIFIED	1-21-65	X1	wB	JL						
X	EXPER. RELEASE	1-20-65	X	wB							
	UNLESS OTHERWISE SPECIFIED DIMENSIONS ARE IN INCHES AND INCLUDE CHEMICALLY APPLIED OR PLATED FINISHES	SCALE	NONE						1.20.65 @ 1-27-65		
	DECIMALS .X ± .05 .XX ± .01 .XXX ± .005	FRACTIONS ± 1/64 ANGLES ± 0° 30'	CODE				TYPE & TEMPER	HEAT TREAT. SPEC.	DRAWN	CHECKED	FINAL APPROVAL
	TOLERANCES										
							FINISH & SPEC. NO.		ELEC. DES. APP.	MECH. DES. APP.	
											LD1741 Ø

REQ. PER UNIT	USED ON			LD1745	Ø
	MODEL	ASS'Y. NO.	DATE		
1	GFT-10K	A917	7-10-65		



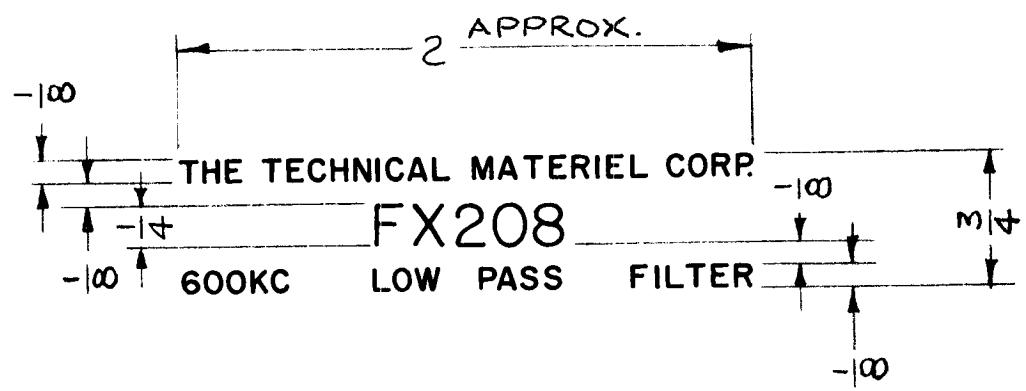
MARK TMC P/N LD1745-MS4267
1/8 HIGH GOTHIC W/LATEST
REV. LETTER (ON BOTTOM OF LIP)

MARKING PROCESS: AS PER TMC SPECIFICATION S-727.
LETTERING: 3/8 HIGH RED GOTHIC, LOCATED AS SHOWN.

REF: MS 4267

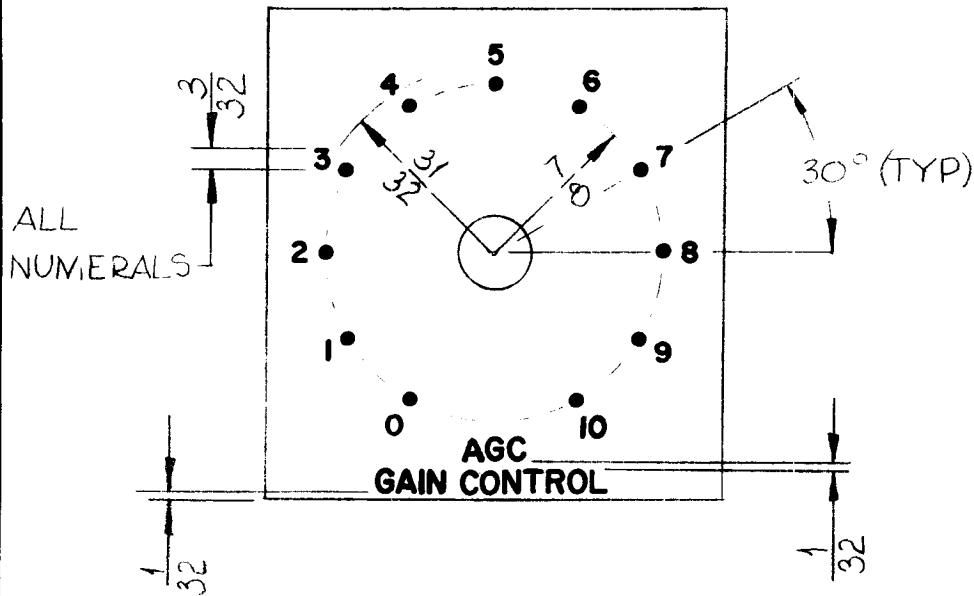
REQ.	ITEM	PART NO.	F.BODUCCI	DESCRIPTION	SYMBOL				
				THE TECHNICAL MATERIEL CORP. MAMARONECK, NEW YORK					
				MARKING COVER TERM STRIP					
				MARKING PROCESS AS PER TMC SPEC S727					
Ø			5.6.65						
SYM	DESCRIPTION	DATE	CH. NO.	DRAFTS	CHECKER	ENG. APP.			
UNLESS OTHERWISE SPECIFIED DIMENSIONS ARE IN INCHES AND INCLUDE CHEMICALLY APPLIED OR PLATED FINISHES		SCALE 1:1							
DECIMALS .X ± .05 .XX ± .01 .XXX ± .005	TOLERANCES	FRACTIONS ± 1/64 ANGLES ± 0° 30'	CODE A						
				TYPE & TEMPER	HEAT TREAT. SPEC.	DRAWN	CHECKED	FINAL APPROVAL	
								LD1745	Ø
				FINISH & SPEC. NO.		ELEC. DES. APP.	MECH. DES. APP.		

REQ. PER UNIT	USED ON			LD1746	Ø
	MODEL	ASS'Y. NO.	DATE		
	FX 208				



SYM	DESCRIPTION	DATE	CH. NO.	DRAFTS	CHECKER	ENG. APP.	REQ. ITEM	PART NO.	DESCRIPTION	SYMBOL	
Ø	ORIGINAL RELEASE FOR PRODUCTION	4.29.65	Ø	22					THE TECHNICAL MATERIEL CORP. MAMARONECK, NEW YORK	RUBBER STAMP, FIXED TYPE (IDENTIFICATION)	
X	EXPER. RELEASE	1.20.65	X	AB							
UNLESS OTHERWISE SPECIFIED DIMENSIONS ARE IN INCHES AND INCLUDE CHEMICALLY APPLIED OR PLATED FINISHES		SCALE		NONE			MATERIAL				
DECIMALS .X ± .05 .XX ± .01 .XXX ± .005		FRACTIONS ± 1/64 ANGLES ± 0° 30'		TOLERANCES		TYPE & TEMPER		HEAT TREAT. SPEC.		DRAWN	
								1.20.65 @ 1-27-65		M. Haffey	
										LD174.6	
										ELEC. DES. APP. MECH. DES. APP.	

REQ. PER UNIT	USED ON			LD1751	∅
	MODEL	ASS'Y. NO.	DATE		
	HFIR-1		3-23-66		



- UNLESS OTHERWISE SPECIFIED
- 1 - ALL ENGRAVING TO BE $\frac{1}{8}$ HIGH WHITE FILLED GOTHIC, DEPTH OF STROKE .010, WIDTH OF STROKE .020
 - 2 - DOTS: WHITE FILLED .010 DEEP, $\frac{1}{16}$ DIA.
 - 3 - ALL ENGRAVING AS PER TMC SPEC S566.

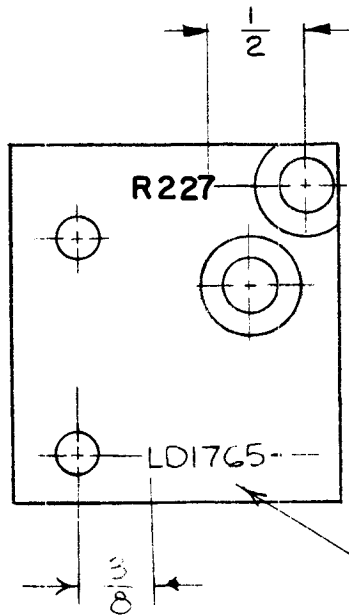
REF. MS4298

							REQ. ITEM	PART NO.	EATON	DESCRIPTION	SYMBOL	
								#	THE TECHNICAL MATERIEL CORP. MAMARONECK. NEW YORK			
								#	PLATE, SWITCH ENGRAVING			
∅	ORIGINAL RELEASE FOR PRODUCTION	5/17/66		CV				#				
SYM	DESCRIPTION	DATE	CH. NO.	DRAFTS	CHECKER	ENG. APP.						
UNLESS OTHERWISE SPECIFIED DIMENSIONS ARE IN INCHES AND INCLUDE CHEMICALLY APPLIED OR PLATED FINISHES		SCALE	1:1									
DECIMALS .X ± .05 .XX ± .01 .XXX ± .005	TOLERANCES	FRACTIONS ± 1/64 ANGLES ± 0° 30'	CODE					TYPE & TEMPER	HEAT TREAT. SPEC.	DRAWN	CHECKED	FINAL APPROVAL
								FINISH & SPEC. NO.	ELEC. DES. APP.	MECH. DES. APP.	LD1751	∅

REQ. PER UNIT	USED ON			LD1765 \emptyset
	MODEL	ASS'Y. NO.	DATE	
1	RFTA-1		1-21-65	

MARKING PROCESS: AS PER TMC SPECIFICATION S-727.

LETTERING: 1/8 HIGH BLACK GOTHIC, LOCATED AS SHOWN.

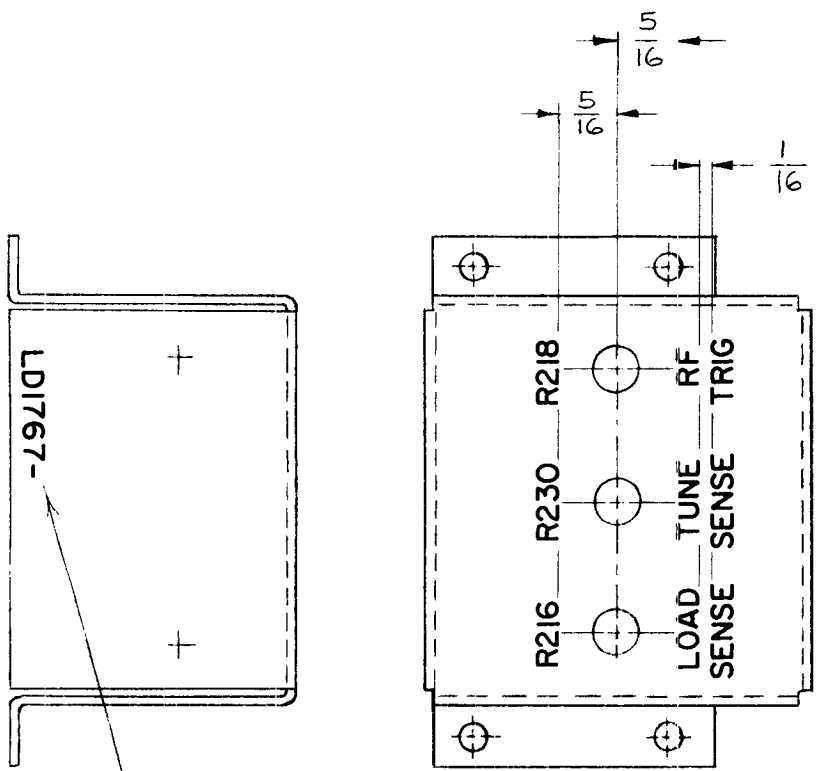


MARK TMC PART NO.
W/LATEST REV.
LETTER.

REF-PM 1198

SYM	DESCRIPTION	DATE	CH. NO.	DRAFTS	CHECKER	ENG. APP.	REQ. ITEM	PART NO.	F. BUDETTI	DESCRIPTION	SYMBOL
\emptyset	ORIGINAL RELEASE FOR PRODUCTION	6.7.66	—	WHD							
X ₂	R227 WAS R210	4.21.65	X ₂	WJB						THE TECHNICAL MATERIEL CORP. MAMARONECK. NEW YORK MARKING, PLATE SWITCH MTC. MARKING PROCESS: AS PER TMC SPEC. 5727	
X ₁	LETTERING ADDED	3.10.65	X ₁	WJB							
X	EXP RELEASE	1-21-65	X	SRG							
UNLESS OTHERWISE SPECIFIED DIMENSIONS ARE IN INCHES AND INCLUDE CHEMICALLY APPLIED OR PLATED FINISHES		SCALE		1:1					SRG	WJB	WHD
							TYPE & TEMPER	HEAT TREAT. SPEC.	DRAWN	CHECKED	FINAL APPROVAL
DECIMALS .X ± .05 .XX ± .01 .XXX ± .005		FRACTIONS ± 1/64 ANGLES ± 0° 30'		TOLERANCES			FINISH & SPEC. NO.		ELEC. DES. APP.	MECH. DES. APP.	LD1765 \emptyset
				A							

REQ. PER UNIT	USED ON			LD1767	☐
	MODEL	ASS'Y. NO.	DATE		
1	RFTA-1		4.23.1965		



MARK TMC P/N WITH LATEST REVISION LETTER.

MARKING PROCESS: AS PER TMC SPECIFICATION S-727.
 LETTERING: 1/8 HIGH BLACK GOTHIC, LOCATED AS SHOWN.

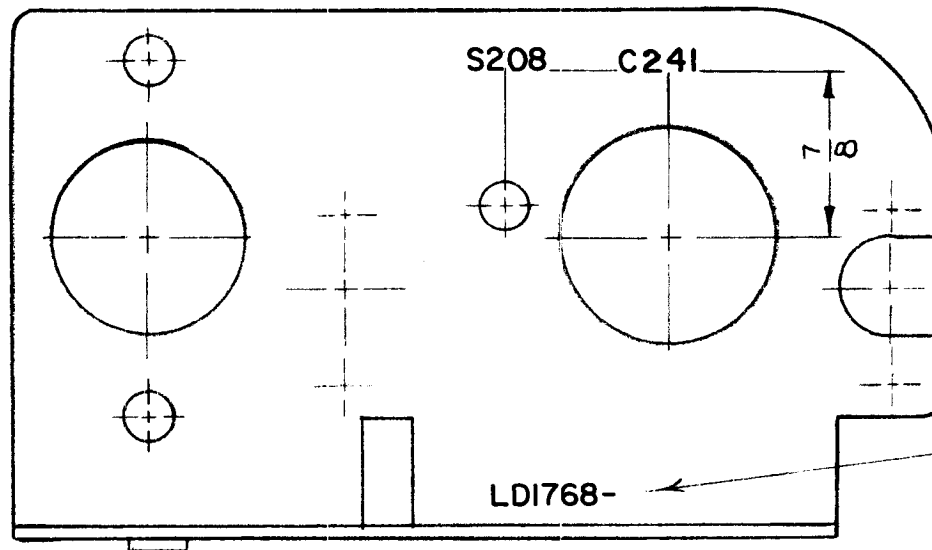
REF:MS4314

REQ.	ITEM	PART NO.	F. BUDETTI DESCRIPTION				SYMBOL
			THE TECHNICAL MATERIEL CORP. MAMARONECK, NEW YORK				
			MARKING, CHASSIS, SENSING				
			MARKING PROCESS: TMC S-727				
					APB	APB	APB
			TYPE & TEMPER	HEAT TREAT. SPEC.	DRAWN	CHECKED	FINAL APPROVAL
					APB	APB	LD1767
			FINISH & SPEC. NO.		ELEC. DES. APP.	MECH. DES. APP.	

REQ. PER UNIT	USED ON			LD1768	✓
	MODEL	ASS'Y. NO.	DATE		
1	RFTA-1		1-21-65		

MARKING PROCESS: AS PER TMC SPECIFICATION S-727.

LETTERING: 1/8 HIGH BLACK GOTHIC, LOCATED AS SHOWN.



MARK TMC P/N WITH LATEST REV. LETTERS

REF: MS 4319

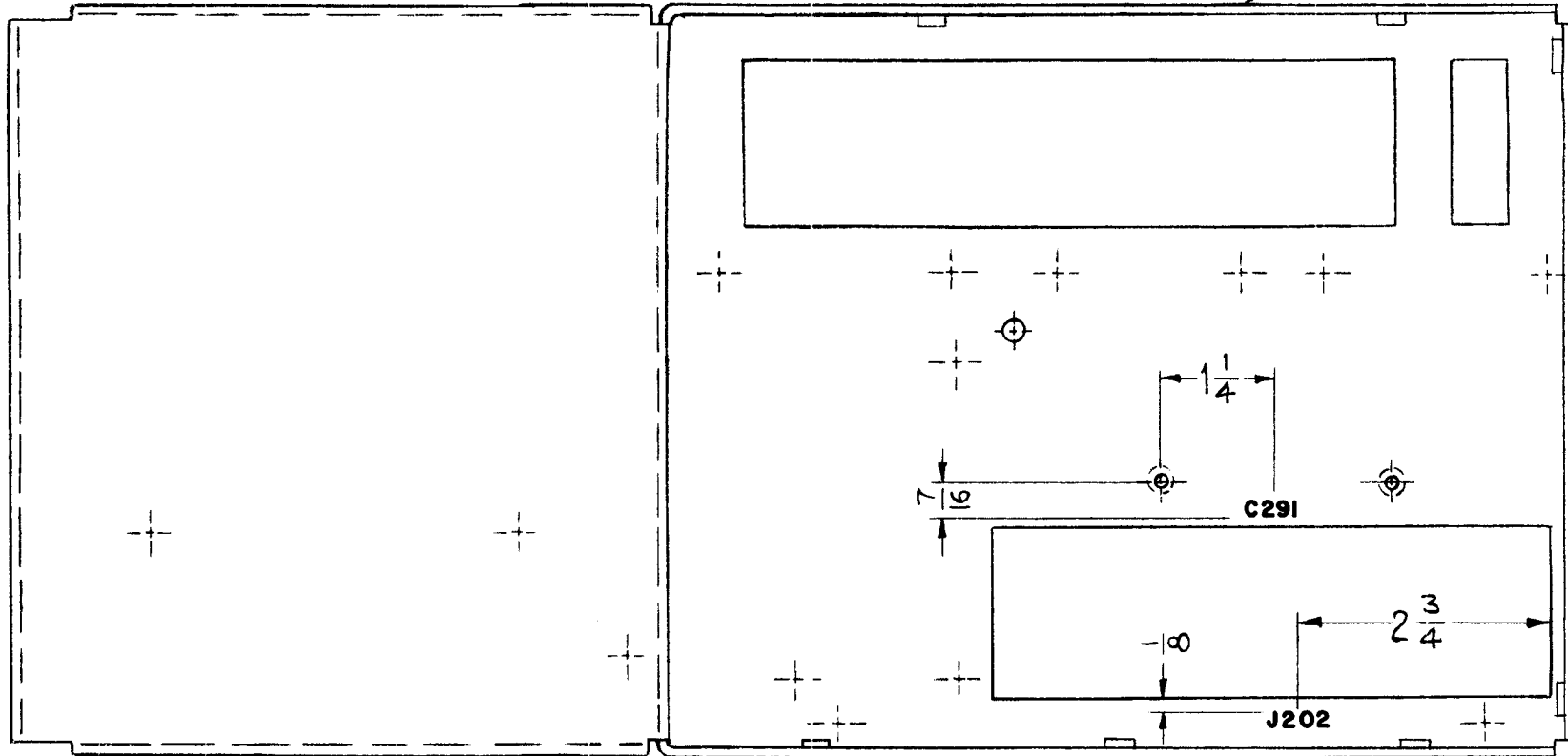
Ø	ORIGINAL RELEASE FOR PRODUCTION	6.7.66	+	140		file	REQ. ITEM	PART NO.	F. BUDETTI	DESCRIPTION	SYMBOL	
X ₂	C241 WAS C230 S208 ADDED	4.21.65	X ₂	AB			STOCK SIZE		THE TECHNICAL MATERIEL CORP. MAMARONECK. NEW YORK			
X ₁	LETTERING ADDED	3.10.65	X ₁	AB			MATERIAL		MARKING BRKT, MOTOR SWITCH MTG.			
X	EXP. RELEASE	1-21-65	X	SRG			FINISH & SPEC. NO.		MARKING PROCESS: AS PER TMC SPEC. S727			
SYM	DESCRIPTION	DATE	CH. NO.	DRAFTS	CHECKER	ENG. APP.	TYPE & TEMPER	HEAT TREAT. SPEC.	DRAWN	CHECKED	FINAL APPROVAL	
UNLESS OTHERWISE SPECIFIED DIMENSIONS ARE IN INCHES AND INCLUDE CHEMICALLY APPLIED OR PLATED FINISHES		SCALE	1:1				— #		SRG	AB	D.B. [Signature]	
DECIMALS .X ± .05 .XX ± .01 .XXX ± .005	TOLERANCES	FRACTIONS ± 1/64 ANGLES ± 0° 30'	CODE A					— #		[Signature]		LD1768
								ELEC. DES. APP.		MECH. DES. APP.		

REQ. PER UNIT	USED ON			LD1770 \emptyset
	MODEL	ASS'Y. NO.	DATE	
1	RFTA-1		1-21-65	

MARKING PROCESS: AS PER TMC SPECIFICATION S-727.

LETTERING: 1/8 HIGH BLACK GOTHIC, LOCATED AS SHOWN.

MARK TMC P/N LD1770-
WITH LATEST REV. LETTER
ON THE LIP.



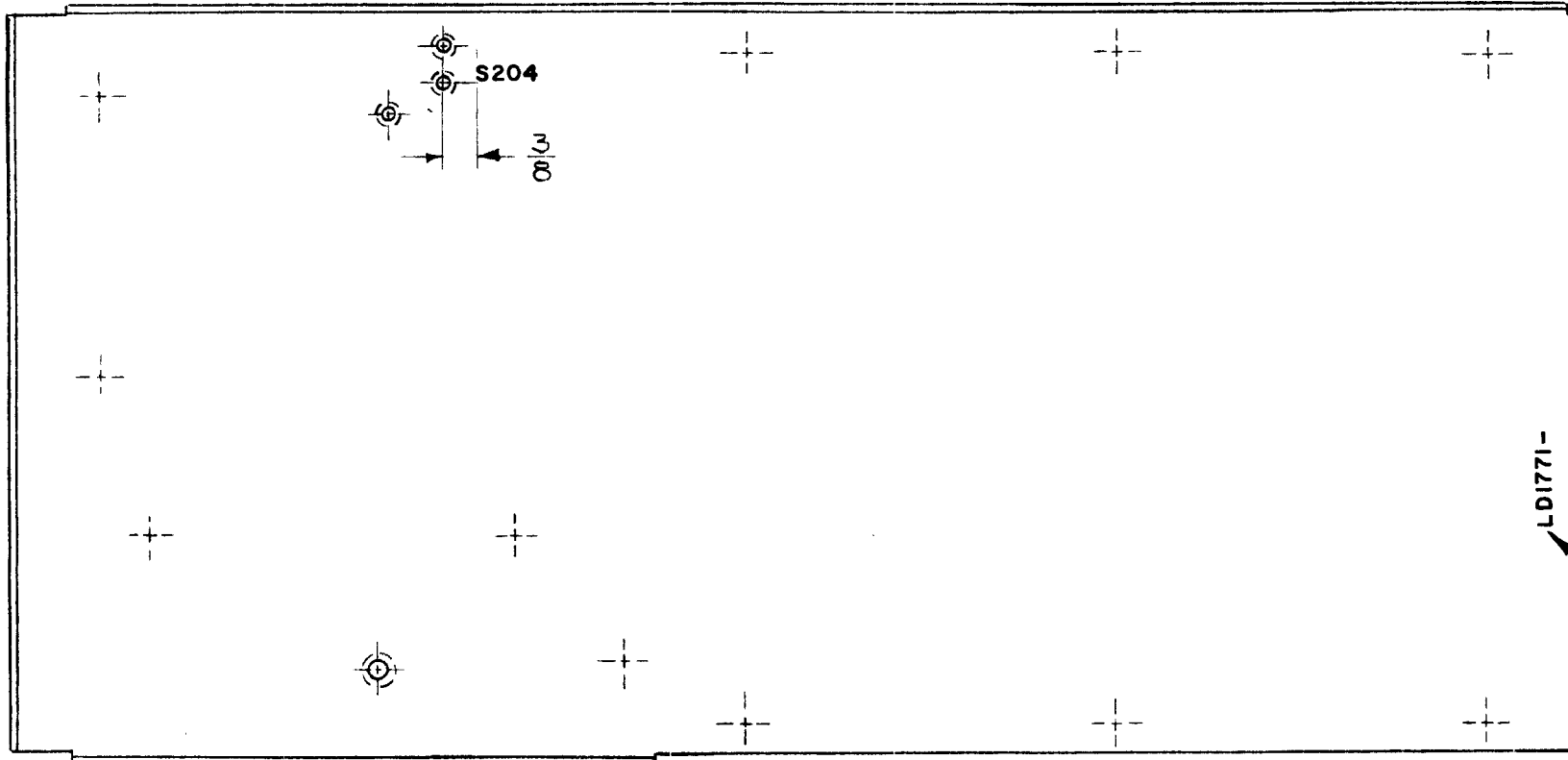
REF: MS 4304

REQ.	ITEM	PART NO.	F. BUDETTI DESCRIPTION				SYMBOL	
\emptyset	ORIGINAL RELEASE FOR PRODUCTION	6.7.66	#	WHD			THE TECHNICAL MATERIEL CORP. MAMARONECK, NEW YORK MARKING, PLATE, LEFT SIDE MARKING PROCESS: AS PER TMC SPEC S-727	
X ₁	C291 & J202 MARK. ADDED	4.21.65	X ₁	AB				
X	EXP. RELEASE	1-21-65	X	SRG				
SYM	DESCRIPTION	DATE	CH. NO.	DRAFTS	CHECKER	ENG. APP.		
UNLESS OTHERWISE SPECIFIED DIMENSIONS ARE IN INCHES AND INCLUDE CHEMICALLY APPLIED OR PLATED FINISHES		SCALE	1/2:1					
DECIMALS .X ± .05 .XX ± .01 .XXX ± .005	TOLERANCES	FRACTIONS ± 1/64 ANGLES ± 0° 30'	CODE	A				
FINISH & SPEC. NO.		TYPE & TEMPER	HEAT TREAT. SPEC.	DRAWN	CHECKED	FINAL APPROVAL		
FINISH & SPEC. NO.		ELEC. DES. APP.		MECH. DES. APP.		LD1770 \emptyset		

REQ. PER UNIT	USED ON			LD1771	Ø
	MODEL	ASS'Y. NO.	DATE		
1	RFTA-1		1-20-65		

MARKING PROCESS: AS PER TMC SPECIFICATION S-727.

LETTERING: 1/8 HIGH BLACK GOTHIC, LOCATED AS SHOWN.



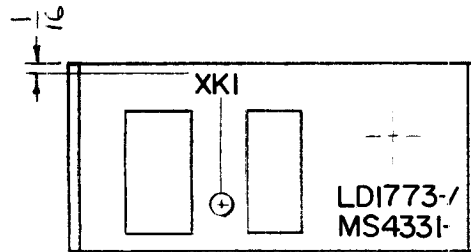
LD1771-
 MARK TMC P/N WITH LATEST REVISION LETTER.

ORIGINAL RELEASE FOR PRODUCTION *5/7/66* *SV* *Wde* REF MS 4321

X3	K201 DELETED	5-17-65	X3	SRG			REQ. ITEM	PART NO.	F. BUDETTI	DESCRIPTION	SYMBOL	
X2	S204 WAS S205 K201 WAS R201	4.21.65	X2	DB			STOCK SIZE		THE TECHNICAL MATERIEL CORP. MAMARONECK. NEW YORK			
X1	LETTERING ADDED	3.10.65	X1	SRG			MATERIAL		MARKING, PLATE, RIGHT SIDE			
X	EXP. RELEASE	1-20-65	X	SRG			FINISH & SPEC. NO.		MARKING PROCESS: AS PER TMC SPEC S727			
SYM	DESCRIPTION	DATE	CH. NO.	DRAFTS	CHECKER	ENG. APP.	TYPE & TEMPER	HEAT TREAT. SPEC.	DRAWN	CHECKED	FINAL APPROVAL	
UNLESS OTHERWISE SPECIFIED DIMENSIONS ARE IN INCHES AND INCLUDE CHEMICALLY APPLIED OR PLATED FINISHES		SCALE		1/2:1					SRG	<i>JCF</i>	<i>DB</i>	<i>M. May</i>
DECIMALS .X ± .05 .XX ± .01 .XXX ± .005	TOLERANCES	FRACTIONS ± 1/64 ANGLES ± 0° 30'	CODE A						00 6/19/66	<i>JCF</i>	<i>DB</i>	LD1771
							FINISH & SPEC. NO.		ELEC. DES. APP.	MECH. DES. APP.	Ø	

REQ. PER UNIT	USED ON		
	MODEL	ASS'Y. NO.	DATE
1	KIT-215	AX-546	2-26-65
1	KIT-216	AX-546	2-26-65

LD1773 Ø

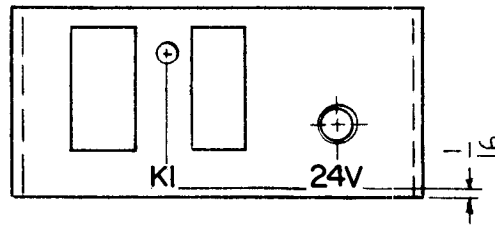


BOTTOM VIEW

MARKING PROCESS: AS PER TMC SPECIFICATION S-727.

LETTERING: 1/8 HIGH BLACK-GOTHIC, LOCATED AS SHOWN.

STAMP TMC PART NO.
1/8 HIGH GOTHIC W/LATEST
REV. LETTER,



TOP VIEW

REF: MS4331

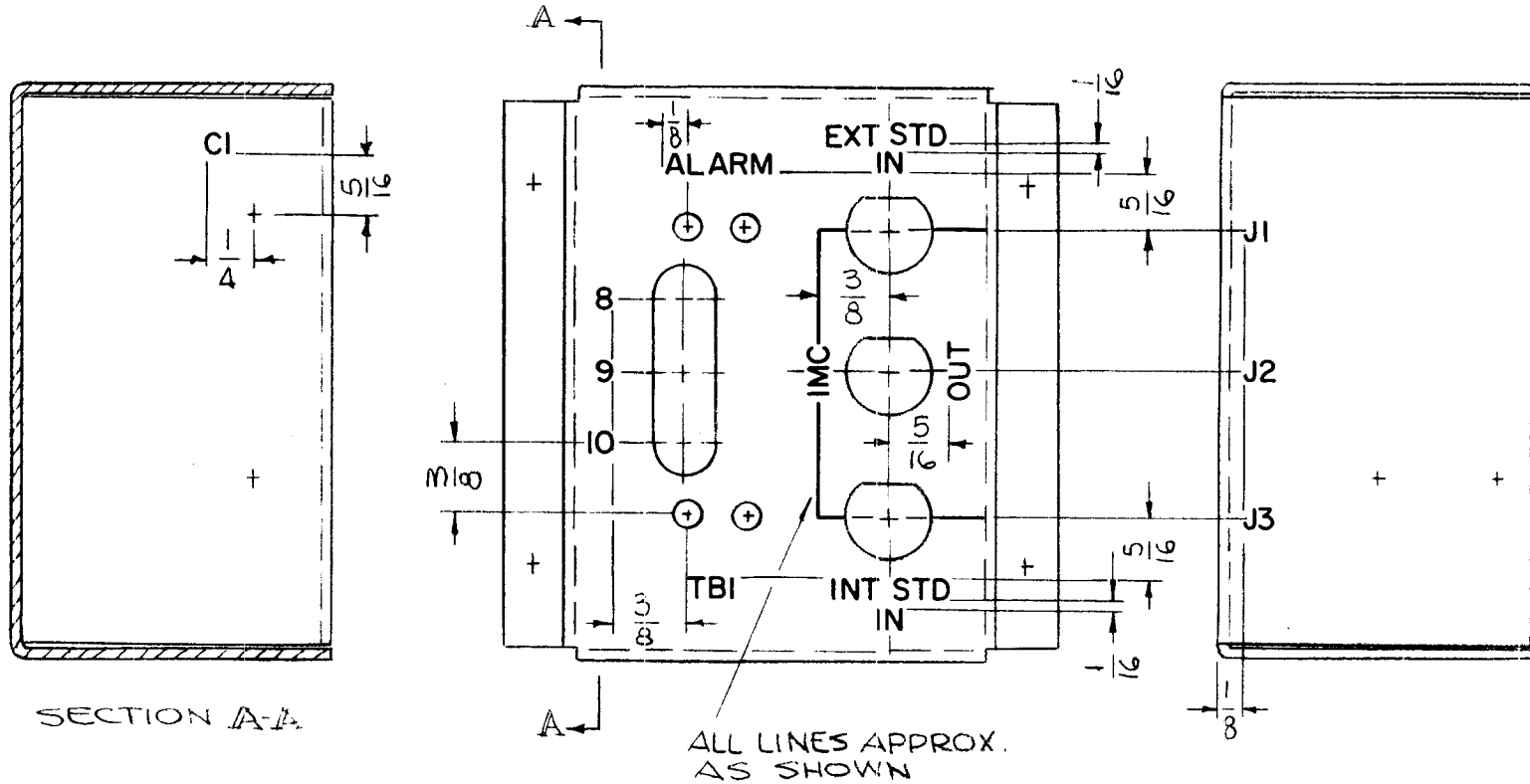
							REQ. ITEM	PART NO.	F. BUDETTI	DESCRIPTION	SYMBOL	
									THE TECHNICAL MATERIEL CORP. MAMARONECK. NEW YORK			
							STOCK SIZE		MARKING, BRACKET, MTG RELAY			
							MATERIAL		MARKING PROCESS: AS PER TMC SPEC S727			
UNLESS OTHERWISE SPECIFIED DIMENSIONS ARE IN INCHES AND INCLUDE CHEMICALLY APPLIED OR PLATED FINISHES							SCALE		SRC			
							1:1		DRAWN			
							TYPE & TEMPER		CHECKED			
							HEAT TREAT. SPEC.		FINAL APPROVAL			
DECIMALS .X ± .05 .XX ± .01 .XXX ± .005							FRACTIONS ± 1/64 ANGLES ± 0° 30'		CODE A		LD1773 Ø	
TOLERANCES									FINISH & SPEC. NO.			
									ELEC. DES. APP. MECH. DES. APP.			

MARKING PROCESS: AS PER TMC SPECIFICATION S-727.

LETTERING: 1/8 HIGH BLACK GOTHIC, LOCATED AS SHOWN.

REQ. PER UNIT	USED ON		
	MODEL	ASS'Y. NO.	DATE
1	KIT-215	AX-546	2-26-65
1	KIT-216	AX-546	2-26-65

LD1774 \emptyset



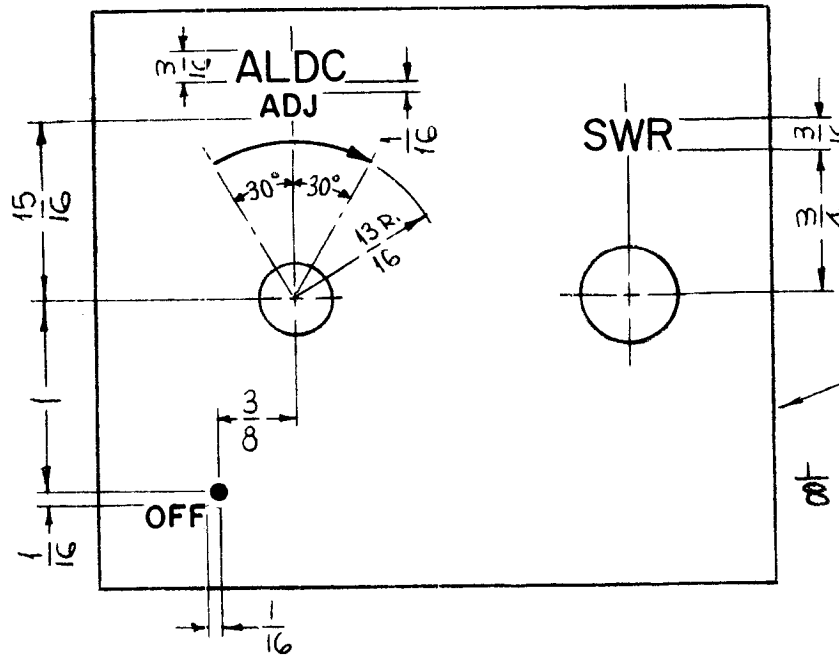
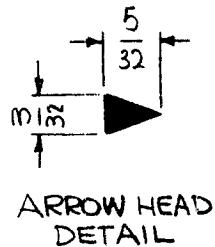
REF: MS 4332-

							REQ. ITEM	PART NO.	F. BUDETTI	DESCRIPTION	SYMBOL
									THE TECHNICAL MATERIEL CORP. MAMARONECK, NEW YORK		
\emptyset	ORIGINAL RELEASE FOR PRODUCTION	3-2-65	\emptyset				STOCK SIZE		MARKING, CHASSIS MAIN		
X	EXP RELEASE	2-26-65	X	SRG			MATERIAL		MARKING PROCESS AS PER TMC SPEC. S727		
SYM	DESCRIPTION	DATE	CH. NO.	DRAFTS	CHECKER	ENG. APP.	TYPE & TEMPER HEAT TREAT. SPEC.		DRAWN	CHECKED	FINAL APPROVAL
UNLESS OTHERWISE SPECIFIED DIMENSIONS ARE IN INCHES AND INCLUDE CHEMICALLY APPLIED OR PLATED FINISHES		SCALE		1:1					SRG		
DECIMALS .X \pm .05 .XX \pm .01 .XXX \pm .005	TOLERANCES	FRACTIONS \pm 1/64 ANGLES \pm 0° 30'	CODE A				FINISH & SPEC. NO.		ELEC. DES. APP.	MECH. DES. APP.	LD1774 \emptyset

HEIGHT OF LETTERS	DEPTH OF STROKE	WIDTH OF STROKE
3/32	.010	.015
3/16	.010	.025
DOTS	.010	1/16 DIA.
ARROWS	.010	SEE DETAIL
LINES	.010	.015

REQ. PER UNIT	USED ON		
	MODEL	ASS'Y. NO.	DATE
1	KIT-161		1-27-65

LD1775 \emptyset



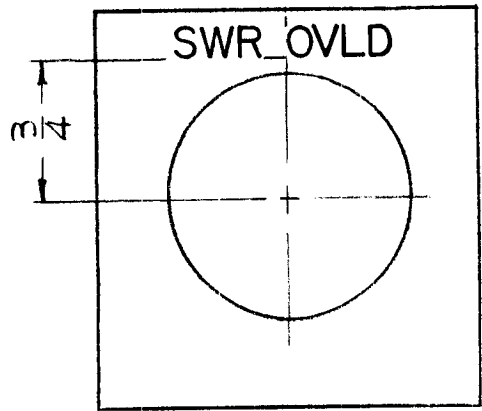
MARK TMC PART NO.
(LD1775/MS4333)
1/8
GOTHIC W/LATEST REV
LETTER. ON REAR.

- UNLESS OTHERWISE SPECIFIED
- 1~ LETTERING 3/32
 - 2~ ALL LETTER GROUPS TO BE CENTERED ON HOLES.
 - 3~ ALL ENGRAVING TO BE WHITE FILLED.
 - 4~ LETTERING TO BE GOTHIC SIZES SHOWN ON CHART.

REF. MS 4333

REQ. ITEM	PART NO.	F. BUDETTI			DESCRIPTION	SYMBOL
		THE TECHNICAL MATERIEL CORP. MAMARONECK, NEW YORK				
		MARKING, PLATE, FRONT				
		MARKING PROCESS: ENGRAVING				
SYMBOL	DESCRIPTION	DATE	CH. NO.	DRAFTS	CHECKER	ENG. APP.
\emptyset	ORIGINAL RELEASE FOR PRODUCTION	3-1-65	\emptyset	SRG		
X	EXP. RELEASE	1-27-65	X	SRG		
UNLESS OTHERWISE SPECIFIED DIMENSIONS ARE IN INCHES AND INCLUDE CHEMICALLY APPLIED OR PLATED FINISHES		SCALE 1:1				
DECIMALS X \pm .05 .XX \pm .01 .XXX \pm .005	TOLERANCES	CODE A				
		FRACTIONS \pm 1/64 ANGLES \pm 0° 30'				
		TYPE & TEMPER		HEAT TREAT. SPEC.		FINISH & SPEC. NO.
		DRAWN SRG		CHECKED [Signature]		FINAL APPROVAL [Signature]
		ELEC. DES. APP.		MECH. DES. APP.		LD1775 \emptyset

REQ. PER UNIT	USED ON			LD1776	Ø
	MODEL	ASS'Y. NO.	DATE		
1	KIT-161		1-27-65		



HEIGHT OF LETTERS	DEPTH OF STROKE	WIDTH OF STROKE
3/16	.010	.025

UNLESS OTHERWISE SPECIFIED
 1~ LETTERING 3/16 HIGH GOTHIC.
 2~ LETTER GROUPS TO BE CENTERED ON HOLES.
 3~ ENGRAVING TO BE WHITE FILLED.

MARK TMC PART NO. (LD1776/MS4334) 1/8 HIGH GOTHIC W/LATEST REV. LETTER. ON REAR.

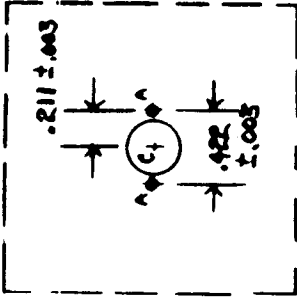
REF. MS 4334

							REQ. ITEM	PART NO.	F. BUDETTI	DESCRIPTION	SYMBOL
										THE TECHNICAL MATERIEL CORP.	
										MAMARONECK.	
										NEW YORK	
Ø	ORIGINAL RELEASE FOR PRODUCTION	3-1-65	Ø	SRG	28					MARKING, PLATE, FRONT	
X	EXP. RELEASE	1-27-65	X	SRG						MARKING PROCESS: ENGRAVING	
SYM	DESCRIPTION	DATE	CH. NO.	DRAFTS	CHECKER	ENG. APP.	MATERIAL				
UNLESS OTHERWISE SPECIFIED DIMENSIONS ARE IN INCHES AND INCLUDE CHEMICALLY APPLIED OR PLATED FINISHES		SCALE		1:1					SRG	SRG	SRG
DECIMALS .X ± .05 .XX ± .01 .XXX ± .005		FRACTIONS ± 1/64 ANGLES ± 0° 30'		CODE A			TYPE & TEMPER	HEAT TREAT. SPEC.	DRAWN	CHECKED	FINAL APPROVAL
TOLERANCES											LD1776
							FINISH & SPEC. NO.	ELEC. DES. APP.	MECH. DES. APP.		

REQ. PER UNIT	MODEL	USED ON	DATE
	FSA		

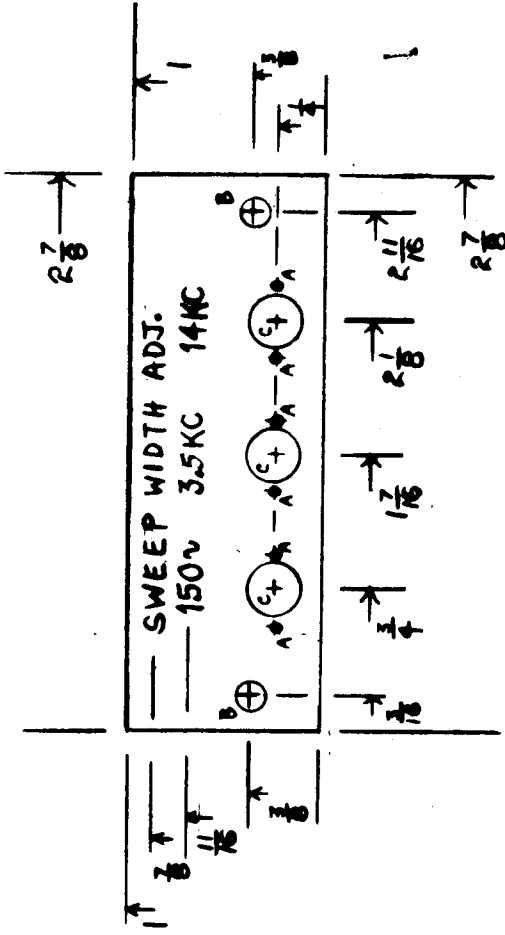
LD1782

HOLE CLUSTER DETAIL



HOLE	DESCRIPTION	QTY.
A	#48 DRILL	6
B	#2R DRILL	2
C	1/8" HOLE	3

MATERIAL
1/16" GLASS MELAMINE



ALL LETTERING:
1/8" BLACK GOTHIC CAPITALS

NOTE:
SWEEP WIDTH ADJ. — CENTERED (1 1/8")
150V — 3.5KC AND 14NC —
CENTERED ON RESPECTIVE HOLE
CLUSTER

SYM	DESCRIPTION	PART NO.	REQ. ITEM	SYMBOL	
Ø	ORIGINAL RELEASE				
	UNLESS OTHERWISE SPECIFIED DIMENSIONS ARE IN INCHES AND INCLUDE CHEMICALLY APPLIED OR PLATED FINISHES				
	DATE	CH. NO.	DRAFTS	CHECKER	ENG. APP.
	7/5/69				
	SCALE				
	TOLERANCES				
	FRACTIONS ± 1/64				
	ANGLES ± 0° 30'				
	DECIMALS .X ± .05				
	.XX ± .01				
	.XXX ± .005				
	TYPE & TEMPER	HEAT TREAT. SPEC.	DRAWN	CHECKED	FINAL APPROVAL
					SPM 7/15/69
	FINISH & SPEC. NO.				LD1782
					MECH. DES. APP.
					ELEC. DES. APP.

THE TECHNICAL MATERIEL CORP.
MAMARONECK, NEW YORK

MARKING, SWEEP WIDTH
CONTROL BOARD

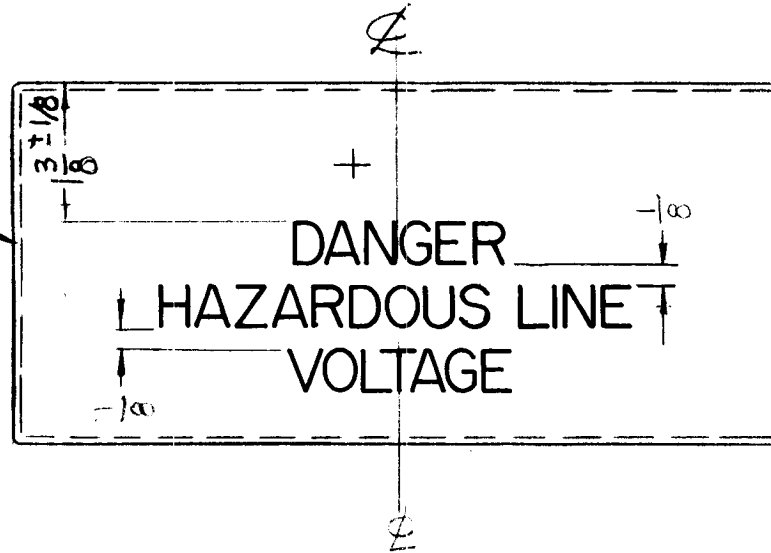
S401- (A10527)

MARKING PROCESS: AS PER TMC SPECIFICATION S-727.

REQ. PER UNIT 2	USED ON		LD1797 B
	MODEL GPT-200K	ASS'Y. NO.	

LETTERING: 5/16 HIGH RED GOTHIC, LOCATED AS SHOWN,
TWO OR THREE LINES OPTIONAL

MARK TMC PART NO.
LD1797-PX921- 1/8 HIGH
GOTHIC W/LATEST
REV. LETTER.

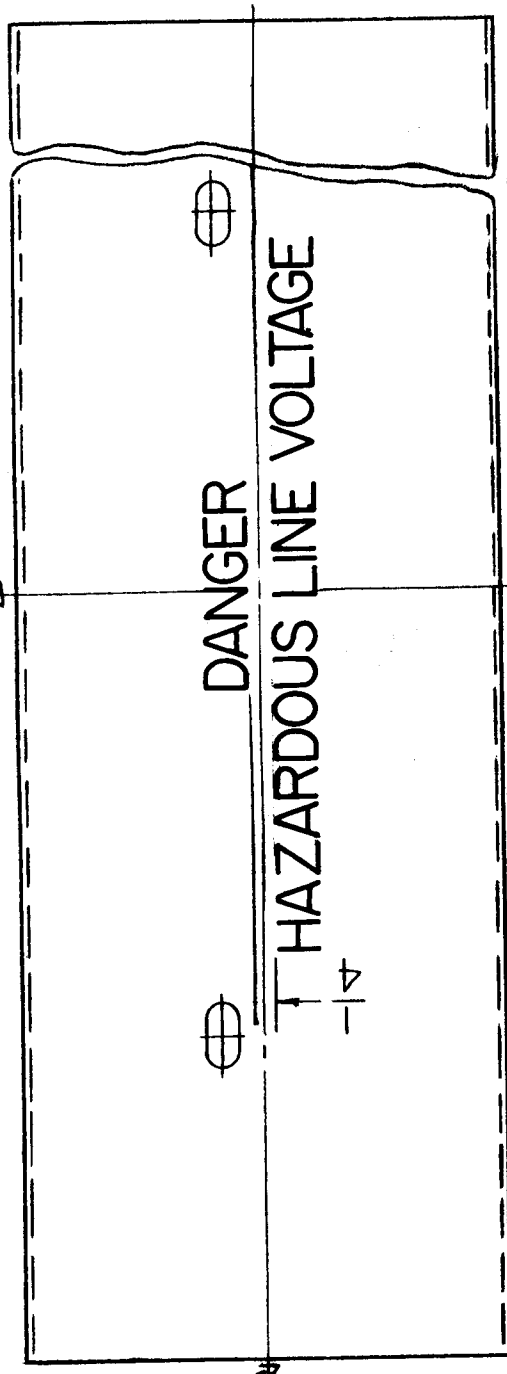


B	LETTERING WAS RELOCATED LETTERING RE-LOCATED	8/21/67	18474	HG					FB	REF: PX921					
A	(2) LIPS & CUTOUT DEL	11/28/65	17301	WHD					REQ. ITEM	PART NO.	FB UDETTI	DESCRIPTION	SYMBOL		
Ø	ORIGINAL RELEASE FOR PRODUCTION	4/20/65	-AA	SRG					THE TECHNICAL MATERIEL CORP. MAMARONECK. NEW YORK						
XI	LIP DELETED SLOT ADDED	4/17/65		CJL					MARKING, SHIELD, CAPACITORS						
X	EXP RELEASE	2-23-65	X	SRG					MARKING PROCESS: AS PER TMC SPEC. S727						
SYM	DESCRIPTION	DATE	CH. NO.	DRAFTS	CHECKER	ENG. APP.	MATERIAL								
UNLESS OTHERWISE SPECIFIED DIMENSIONS ARE IN INCHES AND INCLUDE CHEMICALLY APPLIED OR PLATED FINISHES		SCALE 1/2:1													
DECIMALS .X ± .05 .XX ± .01 .XXX ± .005		FRACTIONS ± 1/64 ANGLES, ± 0° 30'		TOLERANCES		CODE A	TYPE & TEMPER		HEAT TREAT. SPEC.		SRG	QC/S	QD	LD1797 B	
										DRAWN		CHECKED		FINAL APPROVAL	
										ELEC. DES. APP.		MECH. DES. APP.			

LD1799 A

USED ON
 ASSY. NO. 2-23-65
 MODEL GPT-200K
 DATE 2-23-65
 REQ. PER UNIT 1

MARKING PROCESS: AS PER TMC SPECIFICATION D-327.
LETTERING: 1/2 HIGH MED GOTHIC, LOCATED AS SHOWN.



MARK TMC PART NO.
 LD1799/PX919- 1/8 HIGH
 GOTHIC W/LATEST
 REV. LETTER.

REF: PX 919

REQ. ITEM	PART NO.	F. BUDETTI DESCRIPTION	SYMBOL
		THE TECHNICAL MATERIEL CORP. MAMARONECK. NEW YORK	
		MARKING, SHIELD, XFMR TERMS	
		MARKING PROCESS: AS PER TMC SPEC S-727	
		SRG	
		DRAWN	
		CHECKED	
		FINAL APPROVAL	
		LD1799 A	
		ELEC. DES. APP. MECH. DES. APP.	
		FINISH & SPEC. NO.	
		TYPE & TEMPER HEAT TREAT. SPEC.	
		STOCK SIZE	
		MATERIAL	
		DRAFTS	
		CHECKER	
		ENG. APP.	
		DATE	
		CH. NO.	
		SCALE	
		11.28.66	
		17305	
		W40	
		1/28/65	
		2-23/65	
		X	
		SRG	
		1/2:1	
		UNLESS OTHERWISE SPECIFIED	
		DIMENSIONS ARE IN INCHES AND INCLUDE	
		CHEMICALLY APPLIED OR PLATED FINISHES	
		FRACTIONS	
		± 1/64	
		ANGLES,	
		± 0°-30'	
		TOLERANCES	
		.X ± .05	
		.XX ± .01	
		.XXX ± .005	