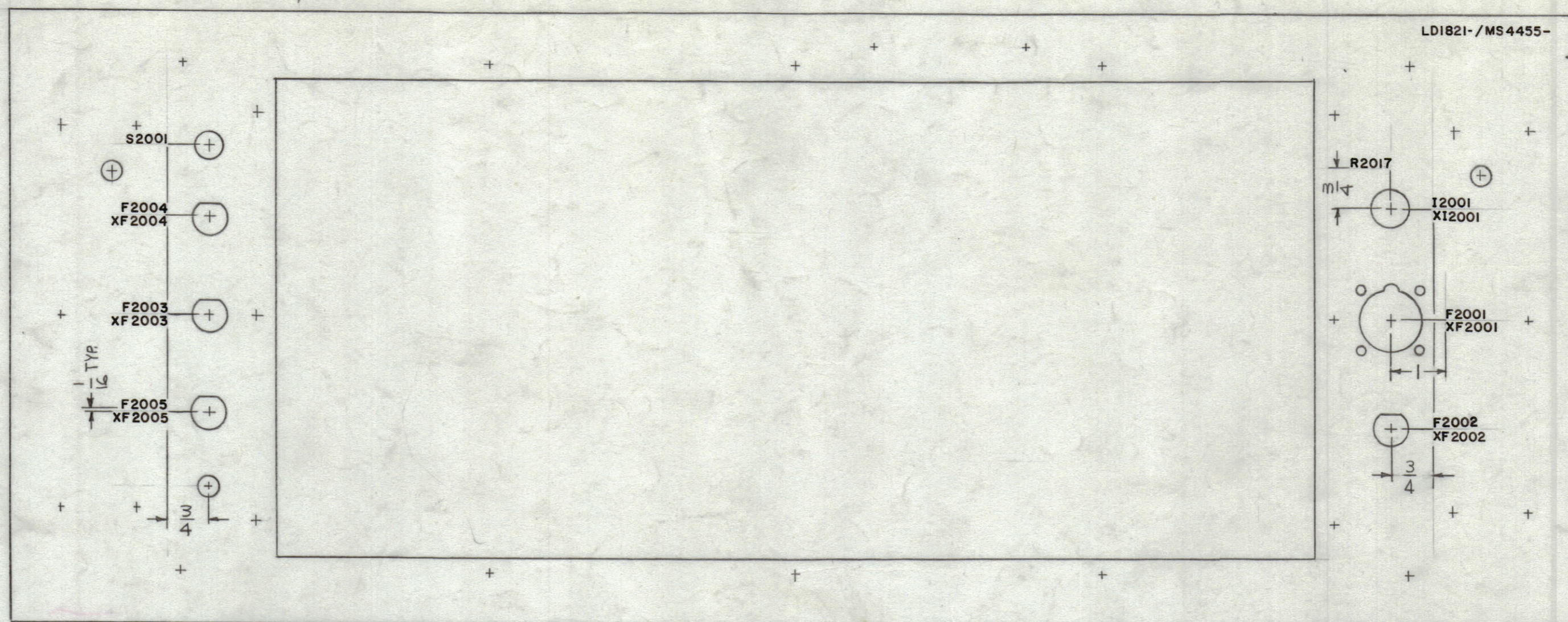


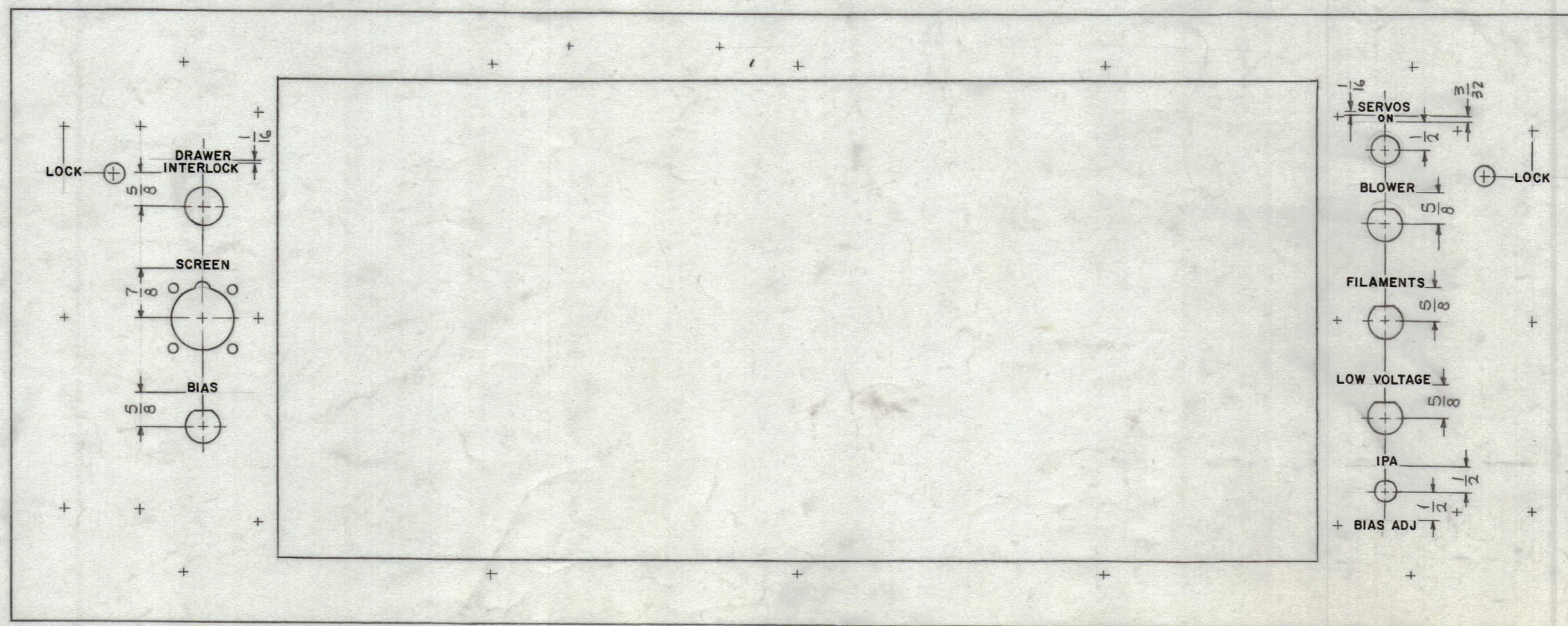
MARKING PROCESS: AS PER TMC SPECIFICATION S-727.
LETTERING: 1/8 HIGH BLACK GOTHIC, LOCATED AS SHOWN.

REVISIONS						
ZONE	SYM	DESCRIPTION	DATE	E.M.N. NO.	DRAFT	CHKD APPD
	X1	NO WAS LD 1648	3-18-65			
	X2	LETTERING ADDED TO REAR VIEW	4-22-65	X2	SEC	DA
92	X3	R2017 WAS R2015	4/27/65	X3	JL.	
	Q	ORIGINAL RELEASE FOR PRODUCTION	8-25-66	Q	RME	

MARKING REAR VIEW



MARK TMC PART NO.
1/8 HIGH GOTHIC
W/LATEST REV. LETTER.



ENGRAVING FRONT VIEW

UNLESS OTHERWISE SPECIFIED:
~ ALL LETTERING 1/8 HIGH WHITE GOTHIC,
~ ALL LETTER GROUPS TO BE CENTERED ON HOLES.

HEIGHT OF LETTERS	DEPTH OF STROKE	WIDTH OF STROKE
1/8	.010	.020
3/32	.010	.015

NOTES

Q'TY./UNIT	1	MODEL USED ON	IAP-126	ASS'Y. NO.	
SCALE	1/2:1	CODE	A		

THE CONTENTS OF THIS DRAWING ARE THE EXCLUSIVE PROPERTY OF THE TECHNICAL MATERIEL CORP. ITS UNAUTHORIZED USE OR REPRODUCTION IN WHOLE OR IN PART IS STRICTLY FORBIDDEN.

REF: MS 4455

REQ'D.	ITEM	PART NUMBER	DESCRIPTION	SYMBOL
F. BUDETTI LIST OF MATERIAL				
MATERIAL			THE TECHNICAL MATERIEL CORP. MAMARONECK, NEW YORK	
FINISH			TITLE MARKING, PANEL, FRONT, DRIVER DRAWER MARKING PROCESS: ENGRAVING	
UNLESS OTHERWISE SPECIFIED DIMENSIONS ARE IN INCHES AND INCLUDE CHEMICALLY APPLIED OR PLATED FINISHES		DRAWN SRG	DATE 3-18-65	FINAL APPROVAL [Signature]
DECIMALS .X ± .05 .XX ± .01 .XXX ± .005		CHECKED [Signature]	DATE 8/24/66	
FRACTIONS ± 1/64 ANGLES ± 0° 30'		ELECT. DES. [Signature]	DATE	
TOLERANCES		MECH. DES. [Signature]	DATE	
			DATE	
			DATE	

LD1821-1