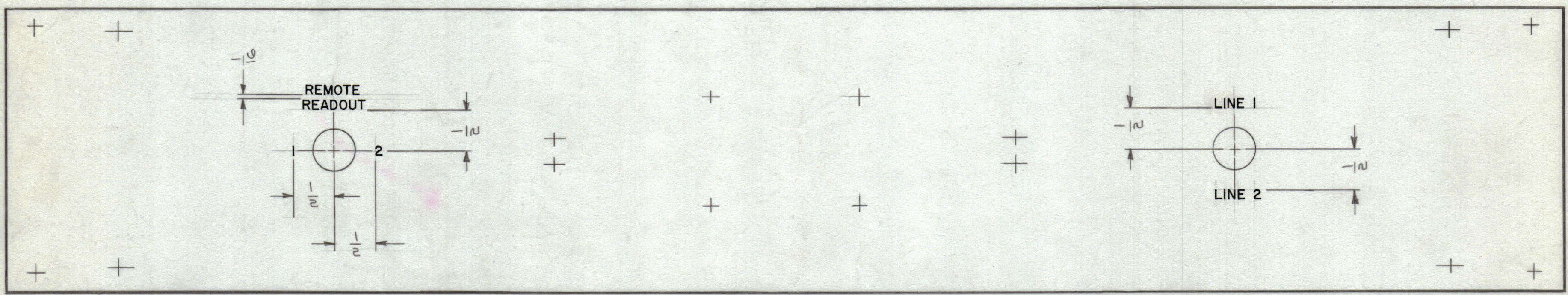


UNLESS OTHERWISE SPECIFIED
 1- ALL ENGRAVING TO BE GOTHIC WHITE FILLED
 SEE CHART.
 2- ALL ENGRAVING TO BE CENTERED ON HOLES.

HEIGHT OF LETTERS	DEPTH OF STROKE	WIDTH OF STROKE
1/8	.010	.020

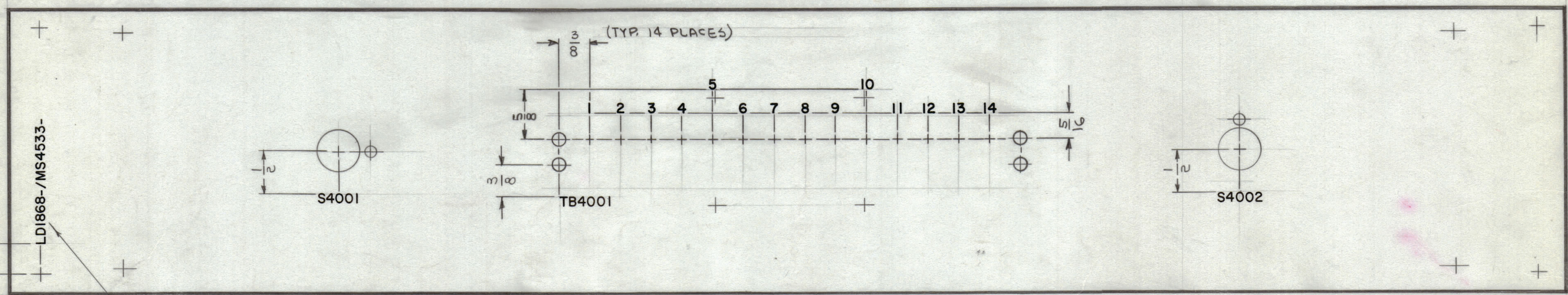
REVISIONS						
ZONE	SYM	DESCRIPTION	DATE	E.M.N. NO.	DRAFT	CHKD
		ORIGINAL RELEASE FOR PRODUCTION	8/4/65			

FRONT VIEW TOP



BOTTOM

BOTTOM



REAR VIEW TOP

MARK TMC PART NO. 1/8 HIGH GOTHIC
 W/LATEST REV. LETTERS.

MARKING PROCESS: AS PER TMC SPECIFICATION S-727.
 LETTERING: 1/8 HIGH BLACK GOTHIC, LOCATED AS SHOWN.

REF: MS 4533

1	RRCA-1	A5036
Q'TY./UNIT	MODEL USED ON	ASS'Y. NO.
SCALE 1:1	CODE A	

REQ'D.	ITEM	PART NUMBER	DESCRIPTION	SYMBOL
F. EATON LIST OF MATERIAL				
MATERIAL			THE TECHNICAL MATERIEL CORP. MAMARONECK, NEW YORK	
FINISH			TITLE MARKING, FRONT PANEL MARKING PROCESS: ENGRAVING & MARKING	
UNLESS OTHERWISE SPECIFIED DIMENSIONS ARE IN INCHES AND INCLUDE CHEMICALLY APPLIED OR PLATED FINISHES			DRAWN DATE 8-23-65 CHECKED DATE 8-5-65 ELECT. DES. DATE MECH. DES. DATE 8/16/65	
THE CONTENTS OF THIS DRAWING ARE THE EXCLUSIVE PROPERTY OF THE TECHNICAL MATERIEL CORP. ITS UNAUTHORIZED USE OR REPRODUCTION IN WHOLE OR IN PART IS STRICTLY FORBIDDEN.			FINAL APPROVAL DATE 8/16/65 SHEET	

NOTES

LD1868