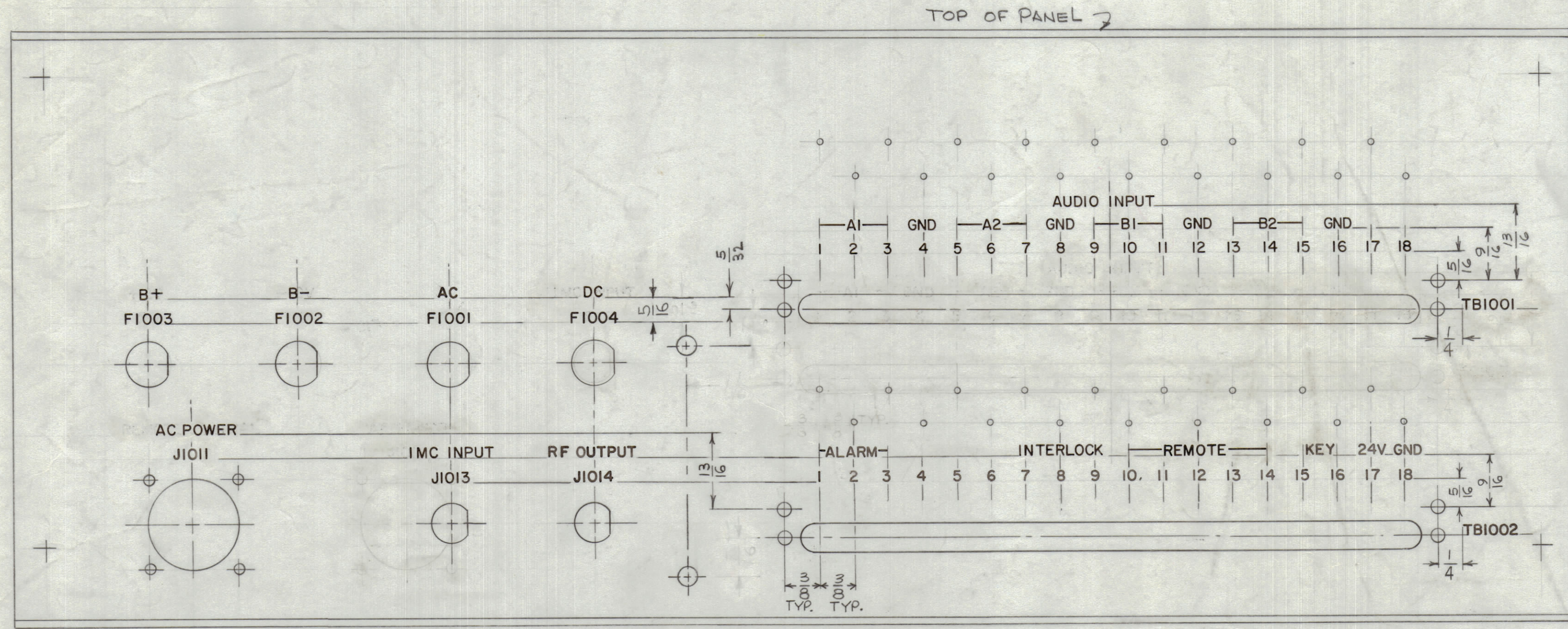


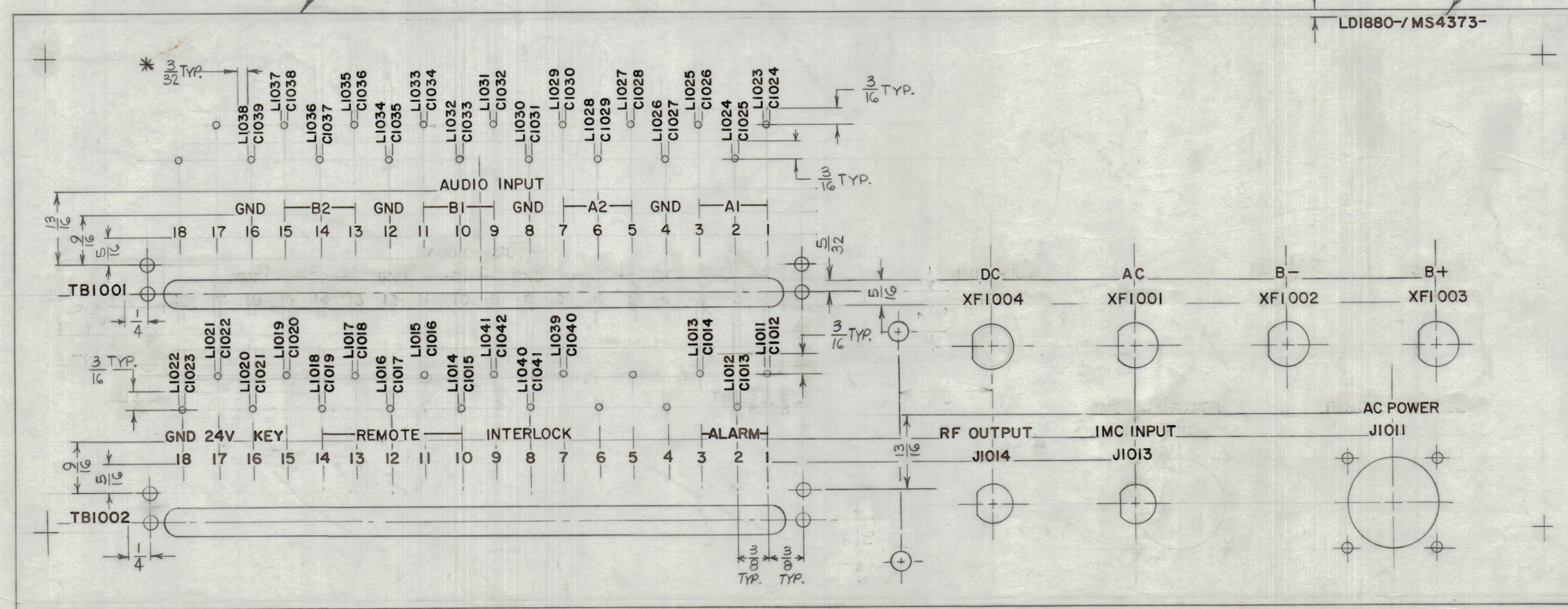
REVISIONS							
ZONE	SYM	DESCRIPTION	DATE	E.M.N. NO.	DRAFT	CHKD	APPD
X1		F SYMBOLS WERE F1, F2, F3 & F4 (INTERIOR/EXTERIOR)	9-27-65	X1	G.D.L.		
		ORIGINAL RELEASE FOR PRODUCTION	9/28/65				
		CLERICAL CHANGE	11/26/65	CC	F.V.C.		

LD1880-1
MARKING, PLATE, REAR
EXTERIOR



UNLESS OTHERWISE SPECIFIED:
MARKING PROCESS: AS PER TMC SPECIFICATION S-727.
LETTERING: 1/8 HIGH BLACK GOTHIC, LOCATED AS SHOWN.

LD1880-2
MARKING, PLATE, REAR
INTERIOR



MARK TMC PART NO. W/LATEST REV. LETTER

LD1880-MS4373-

* 3/32 HIGH BLACK GOTHIC FOR "L" & "C" SERIES ONLY

LD1880
A

REF.: MS4373

REQ'D.	ITEM	PART NUMBER	DESCRIPTION	SYMBOL
ZETENA LIST OF MATERIAL				
MATERIAL				
THE TECHNICAL MATERIEL CORP. MAMARONECK, NEW YORK				
FINISH				
TITLE MARKING, PLATE, REAR				
UNLESS OTHERWISE SPECIFIED DIMENSIONS ARE IN INCHES AND INCLUDE CHEMICALLY APPLIED OR PLATED FINISHES				
SCALE	1:1	MODEL USED ON	CMRA-1	ASS'Y. NO.
DATE	9/28/65	DATE	9/28/65	DATE
MECH. DES.		DATE		DATE
REV. LTR.		DATE		DATE

NOTES

THE CONTENTS OF THIS DRAWING ARE THE EXCLUSIVE PROPERTY OF THE TECHNICAL MATERIEL CORP. ITS UNAUTHORIZED USE OR REPRODUCTION IN WHOLE OR IN PART IS STRICTLY FORBIDDEN.

REPROVAL NO. 2408