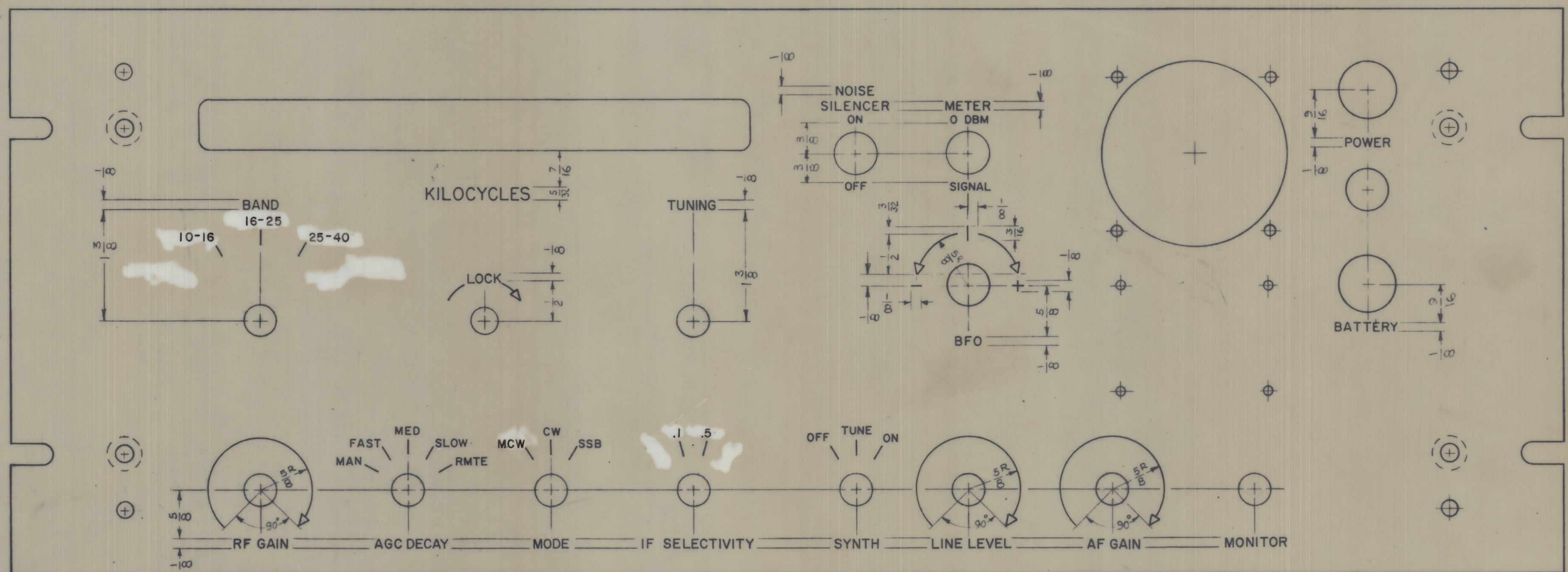


REVISIONS						
ZONE	SYM	DESCRIPTION	DATE	E.M.N. NO.	DRAFT	CHKD
		ORIGINAL RELEASE FOR PRODUCTION	8/1/65			

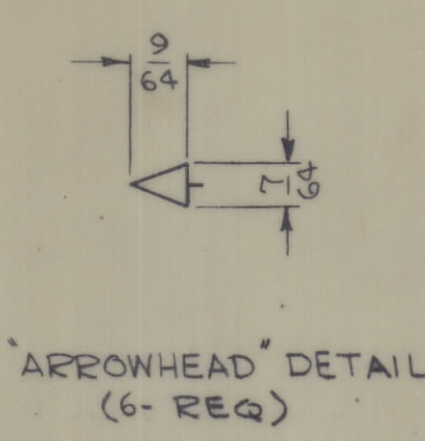
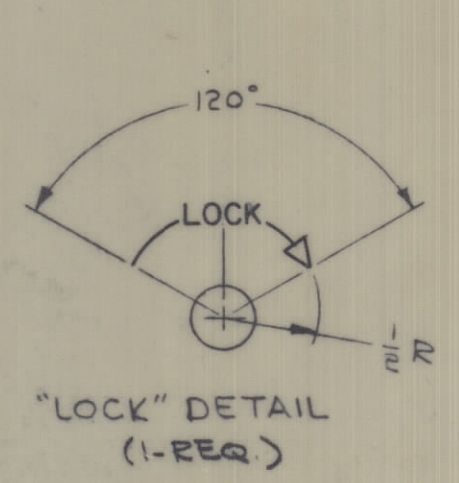
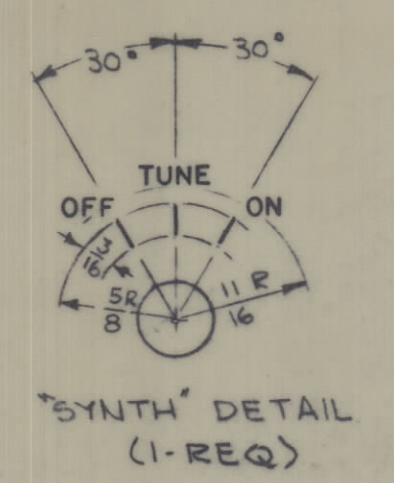
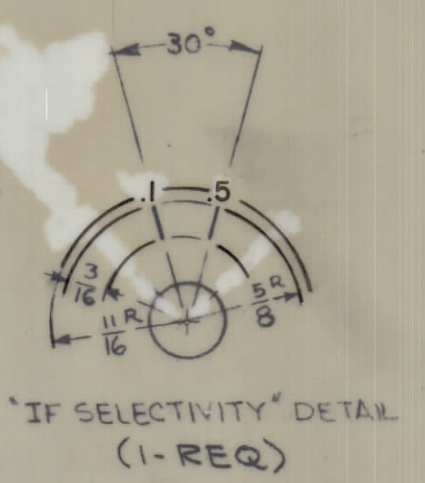
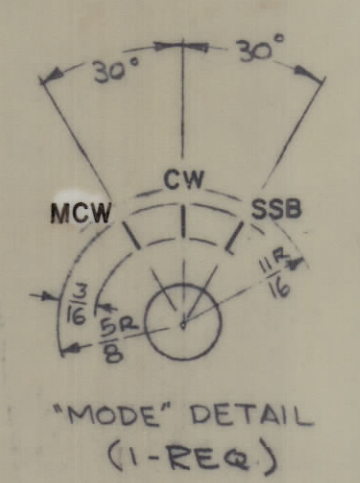
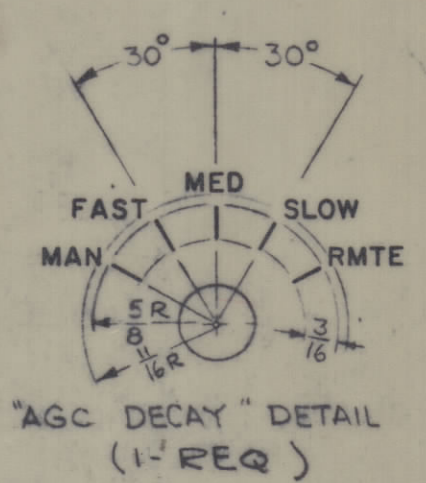
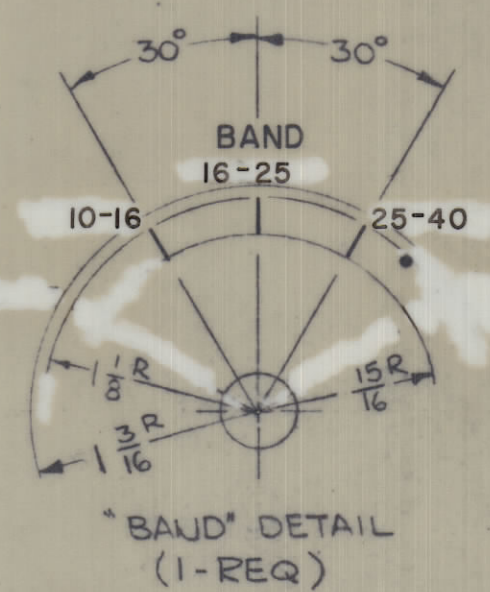
TOP OF PANEL



HEIGHT OF LETTERS	DEPTH OF STROKE	WIDTH OF STROKE
3/32	.010	.015
1/8	.010	.020
5/32	.010	.020
LINES	.010	.015
ARROWHEADS	.010	.015

SEE DETAIL

- ~UNLESS OTHERWISE SPECIFIED~
- 1-ALL ENGRAVING TO BE 3/32 HIGH, WHITE FILLED.
 - 2-ALL LINES TO BE WHITE FILLED.
 - 3-ARROWHEADS TO BE WHITE OUTLINE FILLED.
 - 4-1/16 SPACING BETWEEN ALL LETTER GROUPS.
 - 5-ALL LETTER GROUPS TO BE CENTERED ON HOLES OR SLOTS.



REF: M53960

REQ'D.	ITEM	PART NUMBER	DESCRIPTION	SYMBOL
			LIST OF MATERIAL	SK3136-LD-2
			THE TECHNICAL MATERIEL CORP. MAMARONECK, NEW YORK	
			TITLE	MARKING, PANEL, FRONT MARKING PROCESS-ENGRAVING
			UNLESS OTHERWISE SPECIFIED DIMENSIONS ARE IN INCHES AND INCLUDE CHEMICALLY APPLIED OR PLATED FINISHES	
			SCALE	1:1
			CODE	A
			ASSY. NO.	
			DECIMALS	±.05
			FRACTIONS	± 1/64
			TOLERANCES	ANGLES ± 0° 30'
			DATE	8/1/65
			DATE	8/1/65
			DATE	8/1/65
			DATE	8/1/65
			DATE	8/1/65
			DATE	8/1/65

NOTES

THE CONTENTS OF THIS DRAWING ARE THE EXCLUSIVE PROPERTY OF THE TECHNICAL MATERIEL CORP. ITS UNAUTHORIZED USE OR REPRODUCTION IN WHOLE OR IN PART IS STRICTLY FORBIDDEN.