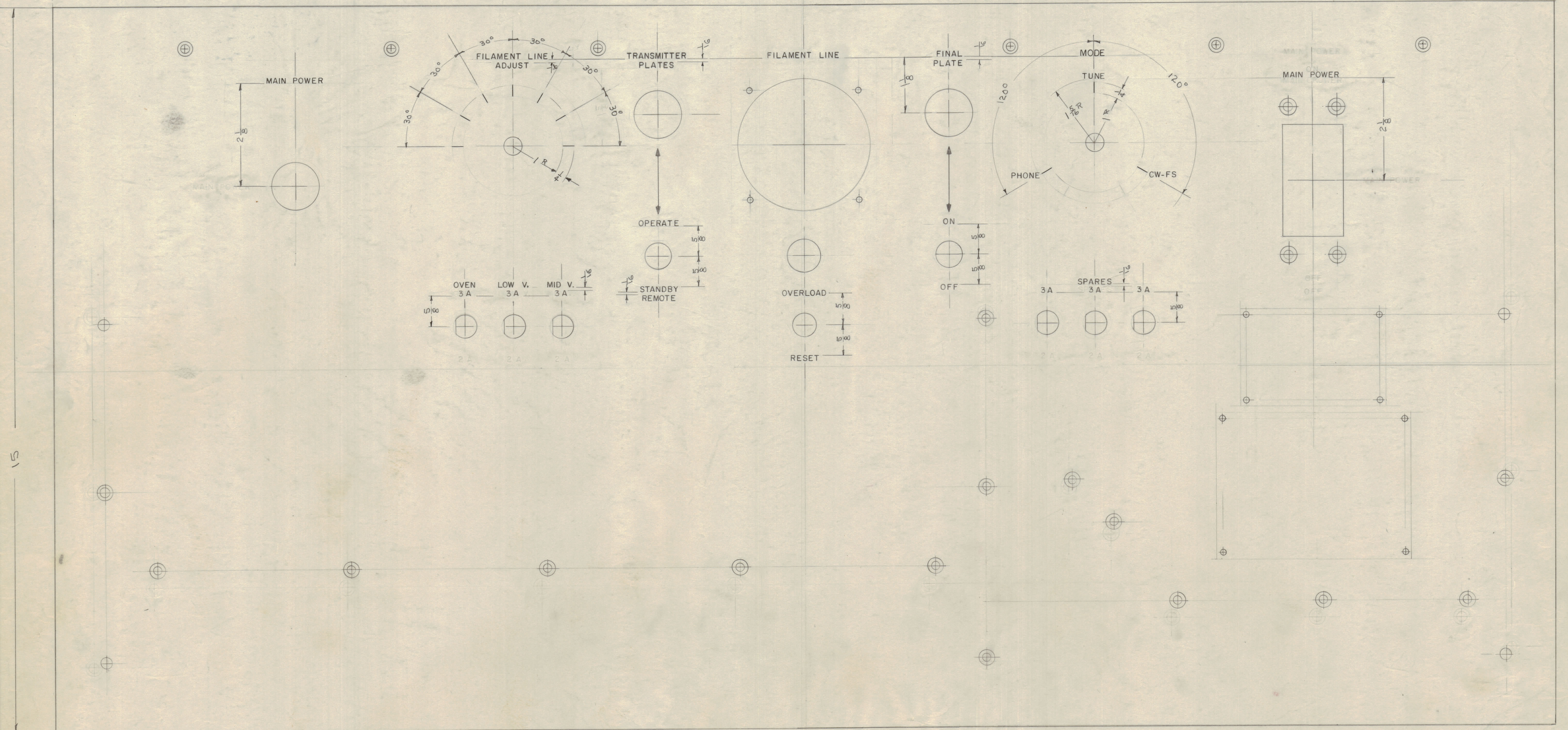


IF IT IS FOUND DESIRABLE TO CHANGE ANY TOLERANCE, OR OTHER DETAIL SPECIFIED ON THIS DRAWING NOTIFY THE PURCHASER PROMPTLY.
 MAXIMUM ALLOWABLE TOLERANCES HAVE BEEN DETERMINED AND DEVIATIONS WILL BE CAUSE FOR REJECTION. REMOVE ALL BURRS AND SHARP EDGES.

31



NOTE:
 ENGRAVING TO BE GOTHIC, WHITE FILLED
 LETTER HEIGHT 5/32"
 STROKE DEPTH .010
 STROKE WIDTH .020

NOTICE TO PERSONS RECEIVING THIS DRAWING
 THE TECHNICAL MATERIEL CORPORATION claims proprietary right in the material disclosed herein. This drawing is issued in confidence for engineering information only and may not be reproduced or used to manufacture anything shown herein without permission from THE TECHNICAL MATERIEL CORPORATION to the user. This drawing is loaned for mutual assistance and is subject to recall at any time.

Property of:
 THE TECHNICAL MATERIEL CORPORATION
 MAMARONECK, NEW YORK

ISSUE	ITEM	CHANGED FROM	DATE	CN. NO.	DRAFTS	CHECKER	ENG. APP.
A	1	MODE Added	8/17/55				

SCALE:
 DRILL, PUNCH, COMMERCIAL STOCK
 SIZES AND MANUFACTURERS
 TOLERANCES ARE NOT INCLUDED.

REF: MS-670

REQ. ITEM	PART NO.	DESCRIPTION	SYMBOL
		THE TECHNICAL MATERIEL CORP. MAMARONECK, NEW YORK	
STOCK SIZE		ENGRAVING, FRONT PANEL	
MATERIAL	WEIGHT PER PC.	POWER SUPPLY GPT-750	
TYPE & TEMPER		DRAWN: [Signature] ELEC. DES. APP. [Signature] MECH. DES. APP. [Signature]	
HEAT TREAT. SPEC.		CHECKED: [Signature] FINAL APPROVAL: [Signature]	
FINISH & SPEC. NO.			LD-235 A

MODEL	PROJECT NO.	ASSY. NO.	DATE
BTP			8/17/55

LD-235 A