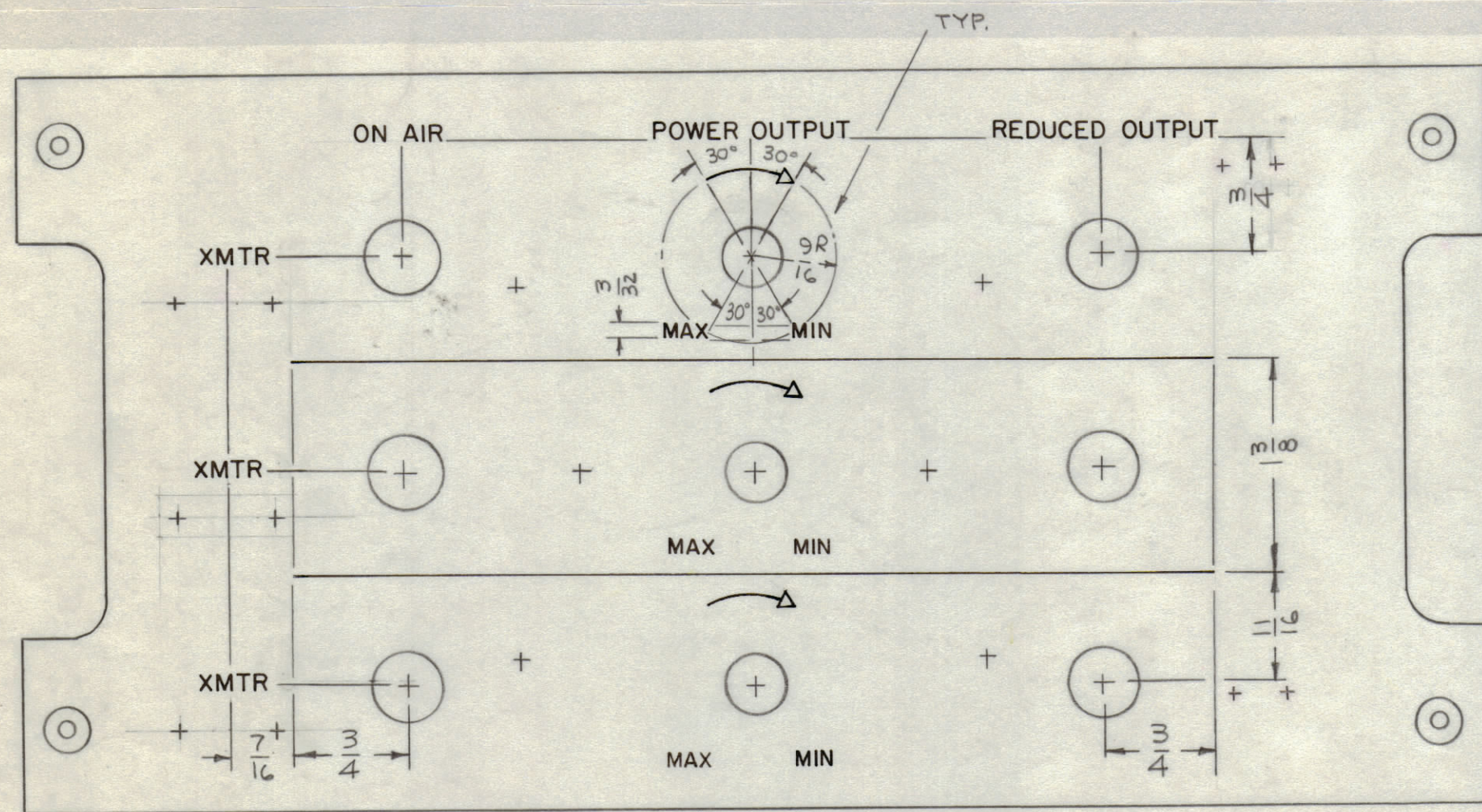
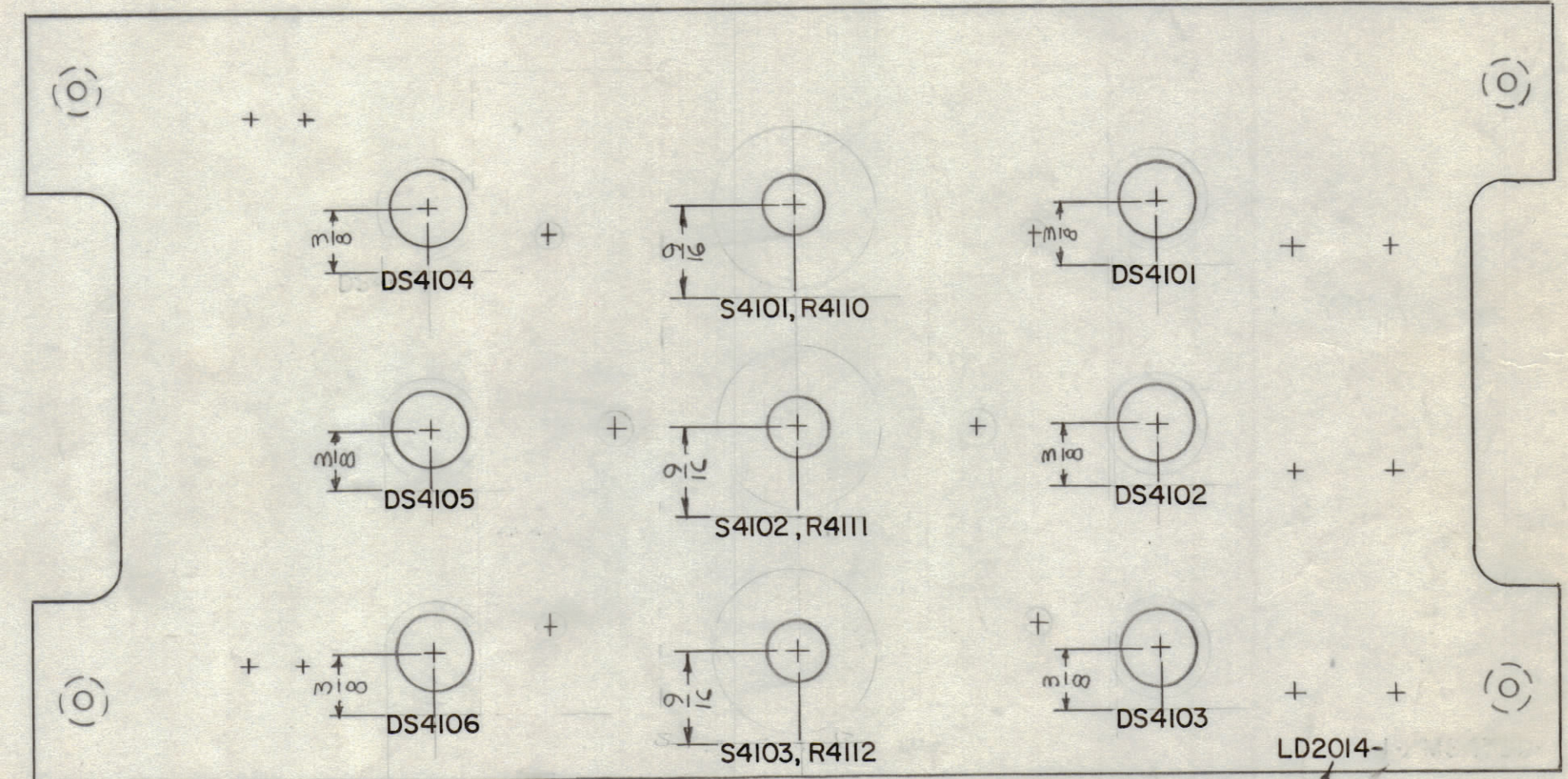


REVISIONS						
ZONE	SYM	DESCRIPTION	DATE	E.M.N. NO.	DRAFT	CHKD
	X1	DRAWING WAS LD 2014-1, LD 2014-2	11-8-65	X1	AKS	
	X2	LETTERING ADDED TO REAR VIEW, ARROWHEADS W/FILLED	4-11-66	X2	AKS	
	Ø	ORIGINAL RELEASE FOR PRODUCTION	4-12-66	Ø	HHA	



ENGRAVING FRONT FRONT

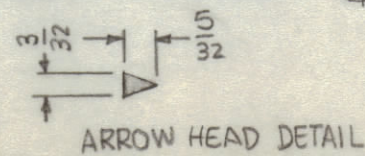


MARKING REAR REAR

MARK TMC P/N  
1/8 HIGH GOTHIC  
W/LATEST REV. LETTER

LETTER HEIGHT	DEPTH OF STROKE	WIDTH OF STROKE
3/32	.010	.015
1/8	.010	.020
ARROWS	.010	SEE DETAIL
LINES	.010	.015

ENGRAVING NOTES:  
UNLESS OTHERWISE SPECIFIED:  
1-ALL LETTERING 1/8 HIGH GOTHIC, WHITE.  
2-ALL LETTER GROUPS TO BE CENTERED ON HOLES.  
3-ALL ENGRAVING WHITE FILLED.  
4-ALL ARROWHEADS WHITE OUTLINE FILL



ARROW HEAD DETAIL

MARKING NOTES:  
MARKING PROCESS: AS PER TMC SPECIFICATION S-727.  
LETTERING: 1/8 HIGH BLACK GOTHIC, LOCATED AS SHOWN.

IEA	LRCM-1	
QTY./UNIT	MODEL USED ON	ASS'Y. NO.
SCALE 1:1	CODE A	

THE CONTENTS OF THIS DRAWING ARE THE EXCLUSIVE PROPERTY OF THE TECHNICAL MATERIEL CORP. ITS UNAUTHORIZED USE OR REPRODUCTION IN WHOLE OR IN PART IS STRICTLY FORBIDDEN.

REF: MS 4799

REQ'D.	ITEM	PART NUMBER	DESCRIPTION	SYMBOL
F. BUDETTI LIST OF MATERIAL				
MATERIAL		THE TECHNICAL MATERIEL CORP. MAMARONECK, NEW YORK		
FINISH		TITLE MARKING, PANEL FRONT MARKING PROCESS: ENGRAVING		
DRAWN	DATE	FINAL APPROVAL	DATE	
CHECKED	DATE			
ELECT. DES.	DATE	LD2014		
MECH. DES.	DATE			
		SHEET		REV. LTR.