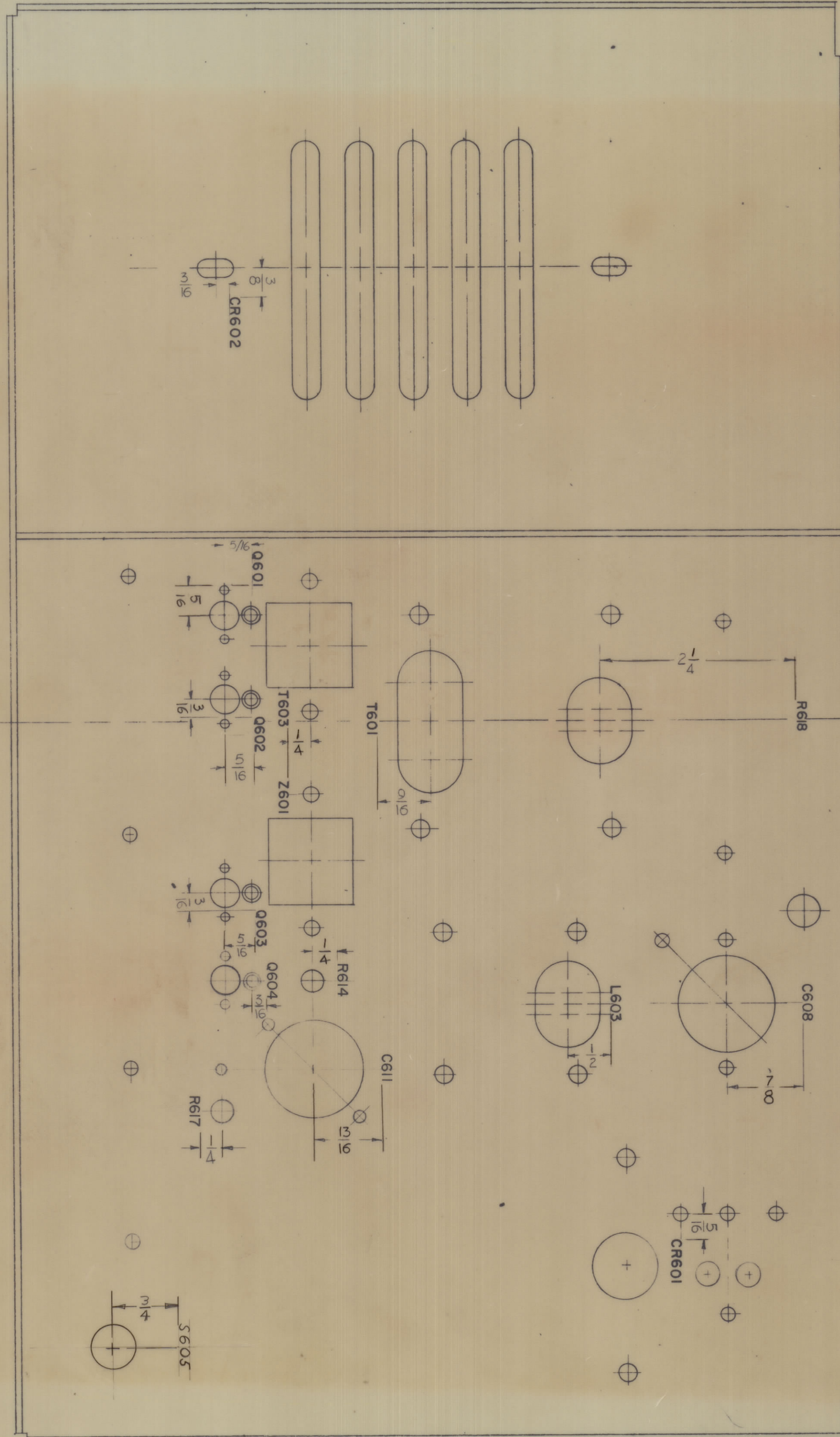
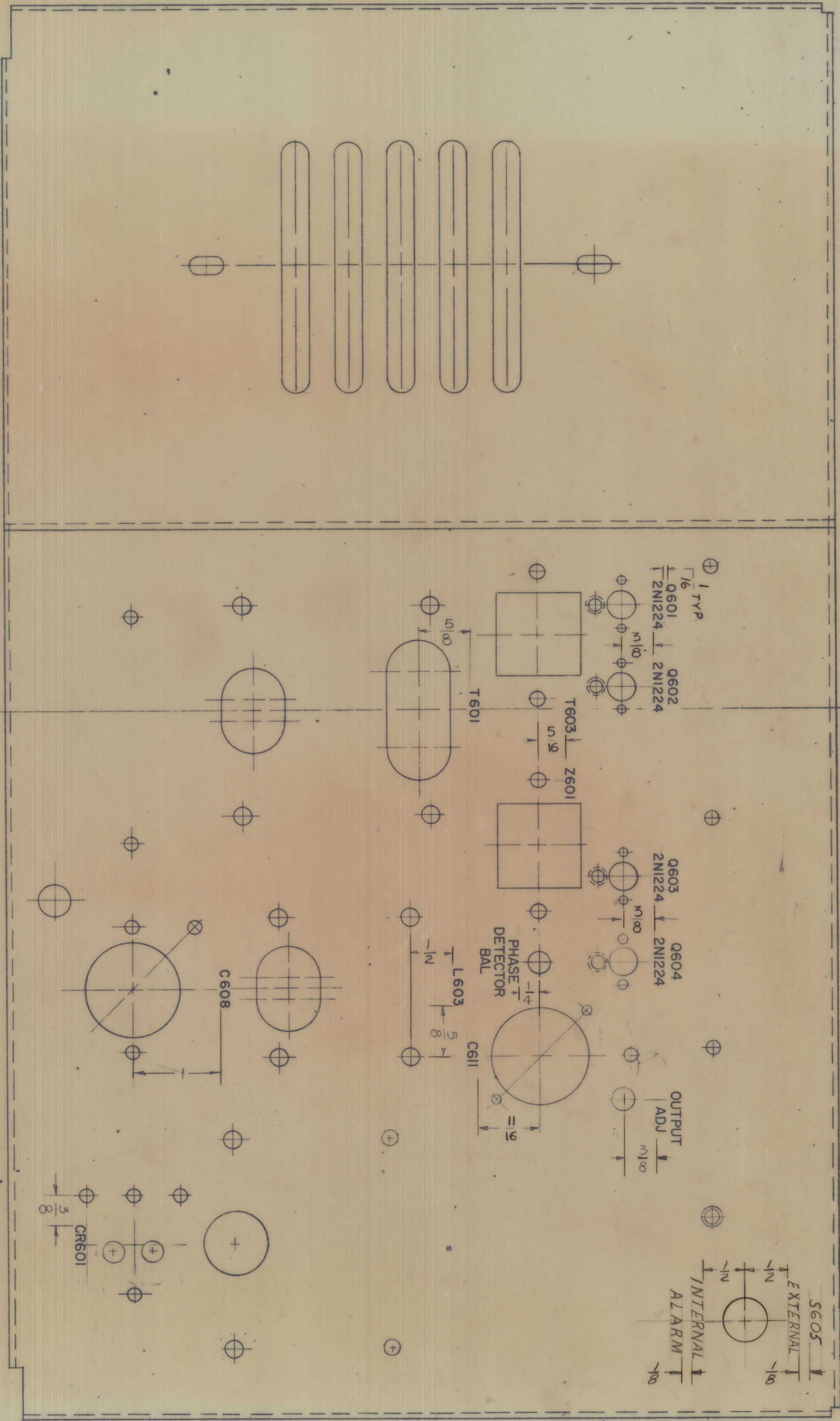


LD2018



BOTTOM VIEW SHOWN

MARK TMC DIM'S w/LATEST REVISION LETTERS.



TOP VIEW SHOWN

NOTES- MARKING PROCESS AS PER T.M.C. SPECIFICATION S-727
 1- ALL LETTERING TO BE 1/8 HIGH, BLACK GOTHIC,
 2- ALL LETTERING GROUPS TO BE CENTERED ON HOLES OR INDICATING LINES UNLESS OTHERWISE SPECIFIED.

ISSUE NO.	DESCRIPTION	DATE	CH. NO.	DRAFTS	CHECKER	ENG. APP.
1	ORIGINAL RELEASE	11-16-65				
TOLERANCES						
SCALE:						
MAXIMUM ALLOWABLE TOLERANCES HAVE BEEN DETERMINED AND ANY DEVIATIONS WILL BE CAUSE FOR REJECTION. REMOVE ALL BURRS AND SHARP EDGES						

REQ. ITEM	PART NO.	DESCRIPTION	SYMBOL
THE TECHNICAL MATERIEL CORP. MAMARONECK, NEW YORK			
LETTERING, MAIN CHASSIS			
MATERIAL			
TYPE & TEMPER			
HEAT TREAT. SPEC.			
FINISH & SPEC. NO.			
1	CSS-3		
REQ. PER UNIT	MODEL	SECTION	USED ON
		ASSY. NO.	DATE
			11-16-65

LD-2018