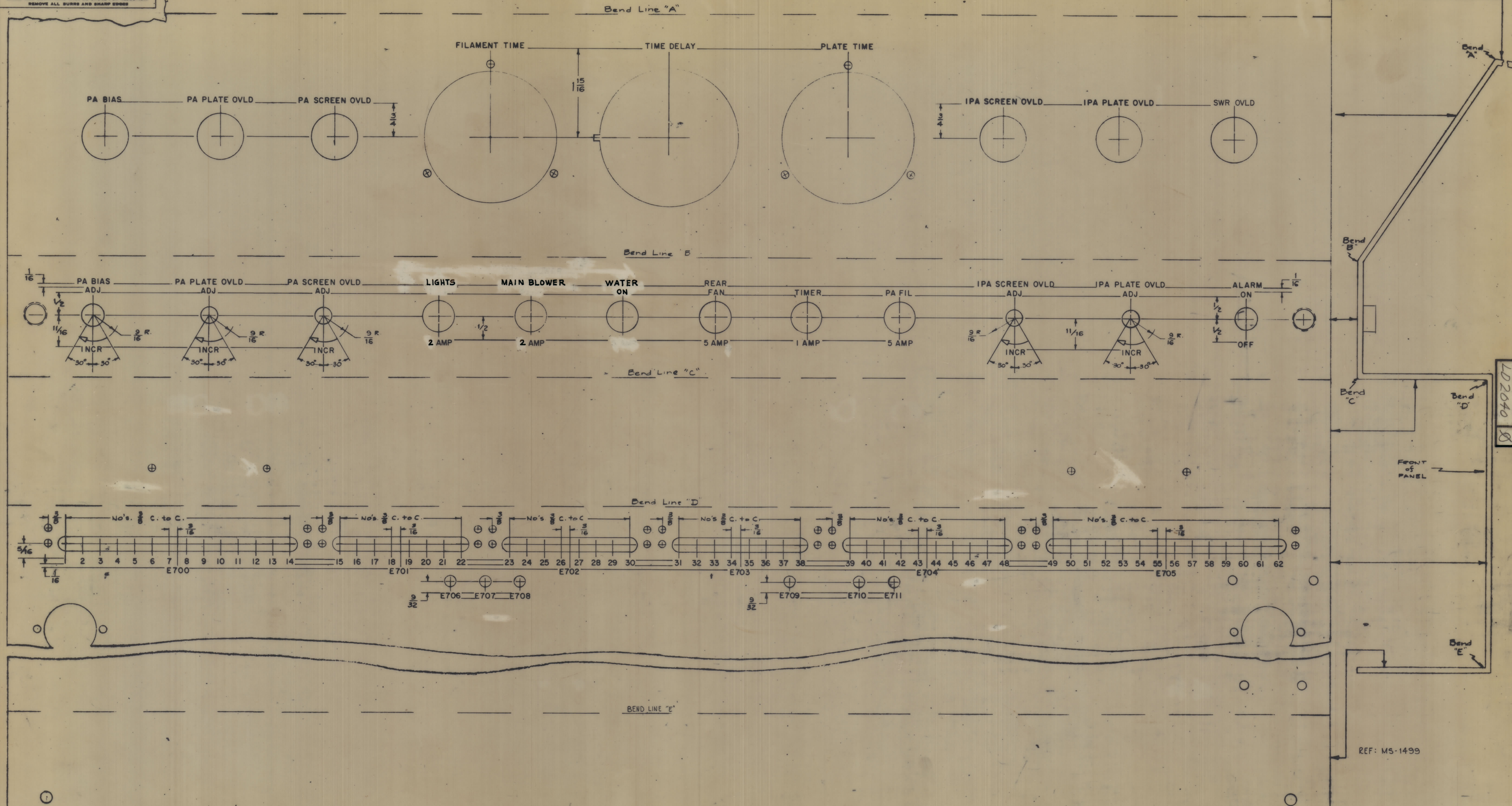


IT IS FOUND DESIRABLE TO CHANGE ANY TOLERANCE OR OTHER DETAIL SPECIFIED ON THIS DRAWING NOTIFY THE PURCHASER PROMPTLY.
 MAXIMUM ALLOWABLE TOLERANCES HAVE BEEN DETERMINED AND DEVIATIONS WILL BE CAUSE FOR REJECTION.
 REMOVE ALL BURRS AND SHARP EDGES



LD2040

REF: MS-1499

FORM 111	ORIGINAL RELEASE	DATE	EN	NO	DRAFTS	CHECKS	ENG	APP
		2/2/66						
TOLERANCES		SCALE: DO NOT SCALE						
ALL DEC. DIM. ± 1/64	OTHERS ANGULAR DIM. ±	DRILL, PUNCH, COMMERCIAL STOCK SIZES AND MANUFACTURERS TOLERANCES ARE NOT INCLUDED.						

All Engraving to be White Filled.
 All Lettering to be 1/8 high Gothic.
 DEPTH OF STROKE WIDTH OF STROKE
 LETTERING - .010 .020
 LINE WORK - .010 .015
 ARROWHEADS - .010 (Approx. Size Shown)

FRONT VIEW SHOWN
 Note - Panel is Shown in a "Flattened" View to Clearly Show all Lettering.

1	KIT 180	PROJECT NO.	DATE
REV PER UNIT	MODEL	ASBY. NO.	DATE
			5-26-65

REQ. ITEM	PART NO.	DESCRIPTION	SYMBOL
STOCK SIZE		THE TECHNICAL MATERIEL CORP. MAMARONECK, NEW YORK	
MATERIAL		MARKING, FRONT PANEL, 10K RELAY PANEL MARKING PROCESS: ENGRAVING KIT-180 (GPT-40K VAPOR COOL)	
TYPE & TEMPER		B/10AP BJP	
HEAT TREAT SPEC.		DRW 2/2/66 ELEC. DIM. APP. MISC. DIM. APP.	
FINISH & SPEC. NO.		ENGRS FINAL APPROVAL	
		SHEET 1 OF 2	LD2040