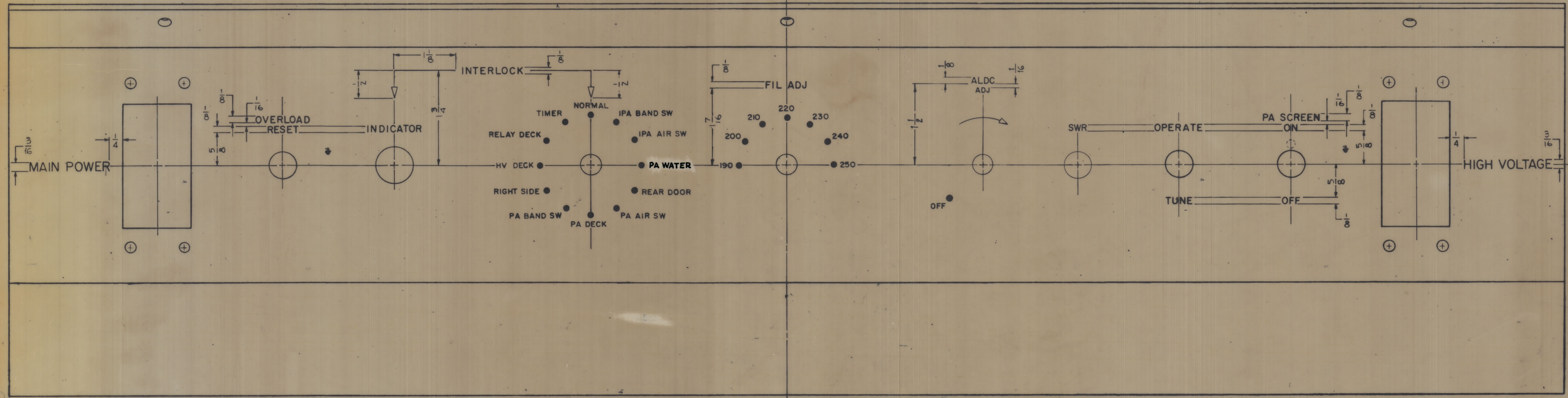
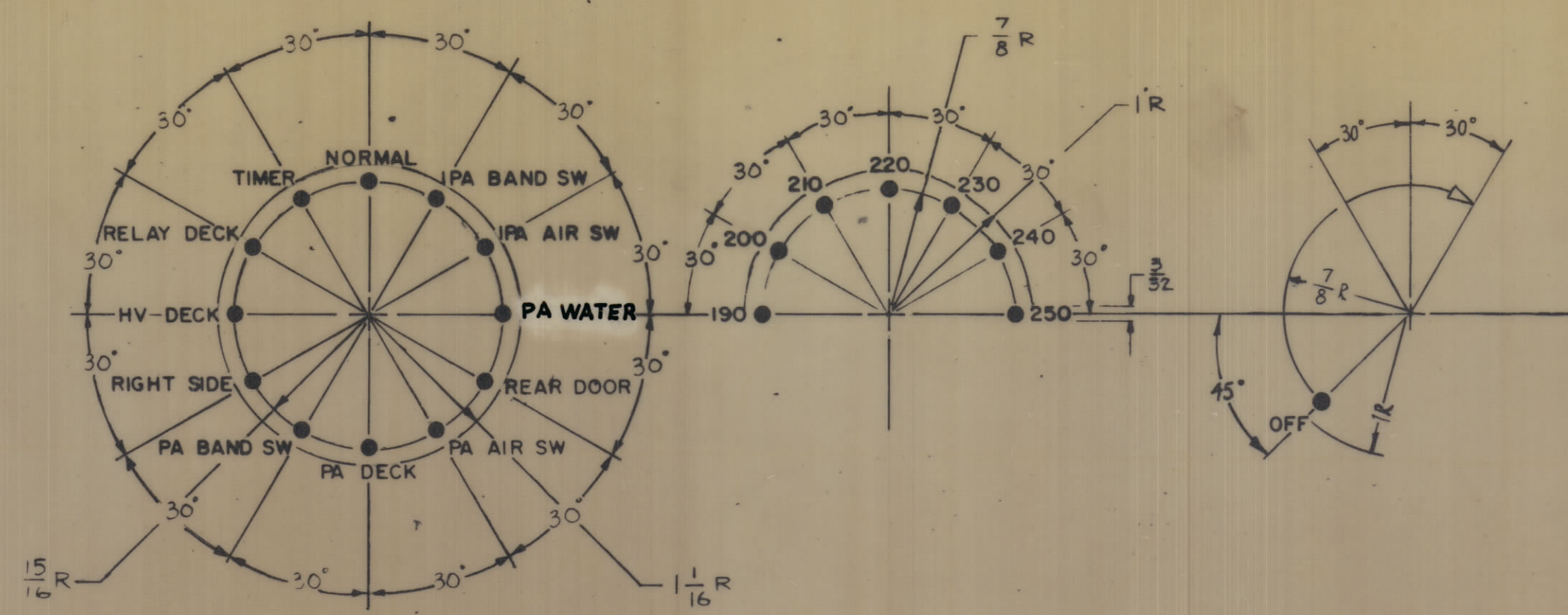


IF IT IS FOUND DESIRABLE TO CHANGE ANY TOLERANCE OR OTHER DETAIL SPECIFIED ON THIS DRAWING NOTIFY THE PURCHASER PROMPTLY.

MAXIMUM ALLOWABLE TOLERANCES HAVE BEEN DETERMINED AND DEVIATIONS WILL BE CAUSE FOR REJECTION REMOVE ALL BURRS AND SHARP EDGES

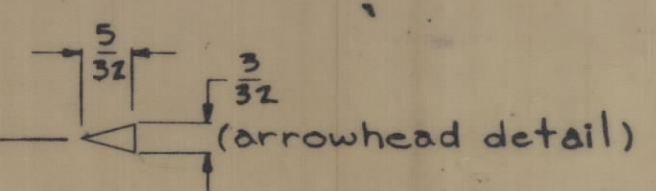


FRONT OF PANEL SHOWN

FRONT OF PANEL

UNLESS OTHERWISE SPECIFIED:

- 1- ALL LETTERING 3/32
- 2- ALL LETTER GROUPS TO BE CENTERED ON HOLES, CUTOUTS OR INDICATING LINES AS THE CASE MAY APPLY.
- 3- ENGRAVING TO BE GOTHIC, WHITE FILLED. SIZES SHOWN ON CHART.
- 4- ALL DOTS TO BE 3/32 DIA., WHITE FILLED.
- 5- ALL ARROWHEADS TO BE WHITE OUTLINE FILL
- 6- ALL LINES TO BE WHITE FILLED.



LETTER HEIGHT	DEPTH OF STROKE	WIDTH OF STROKE
3/32	.010	.015
1/8	.010	.020
3/16	.010	.025
DOTS	.010	1/16 DIA.
ARROWHEADS	.010	.015
SOLID LINES	.010	.015

REF: MS-3678

REQ. ITEM	PART NO.	DESCRIPTION	SYMBOL
THE TECHNICAL MATERIEL CORP. MAMARONECK, NEW YORK			
MARKING, FRONT PANEL - 10K MAIN CONTROL			
MARKING PROCESS: ENGRAVING			
KIT-180 (GPT-40K VAPoR Cool)			
TYPE & TEMPER		B/NAD	RJP
HEAT TREAT SPEC.		2/2/66	FINAL APPROVAL
FINISH & SPEC. NO.		SHEET 1 OF 2	

ISS. NO.	NO. OF COPIES	DATE
1	KIT 180	5-26-65

LD2041