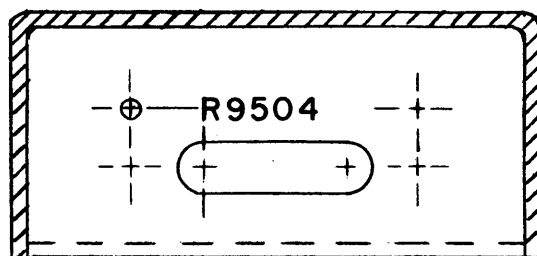
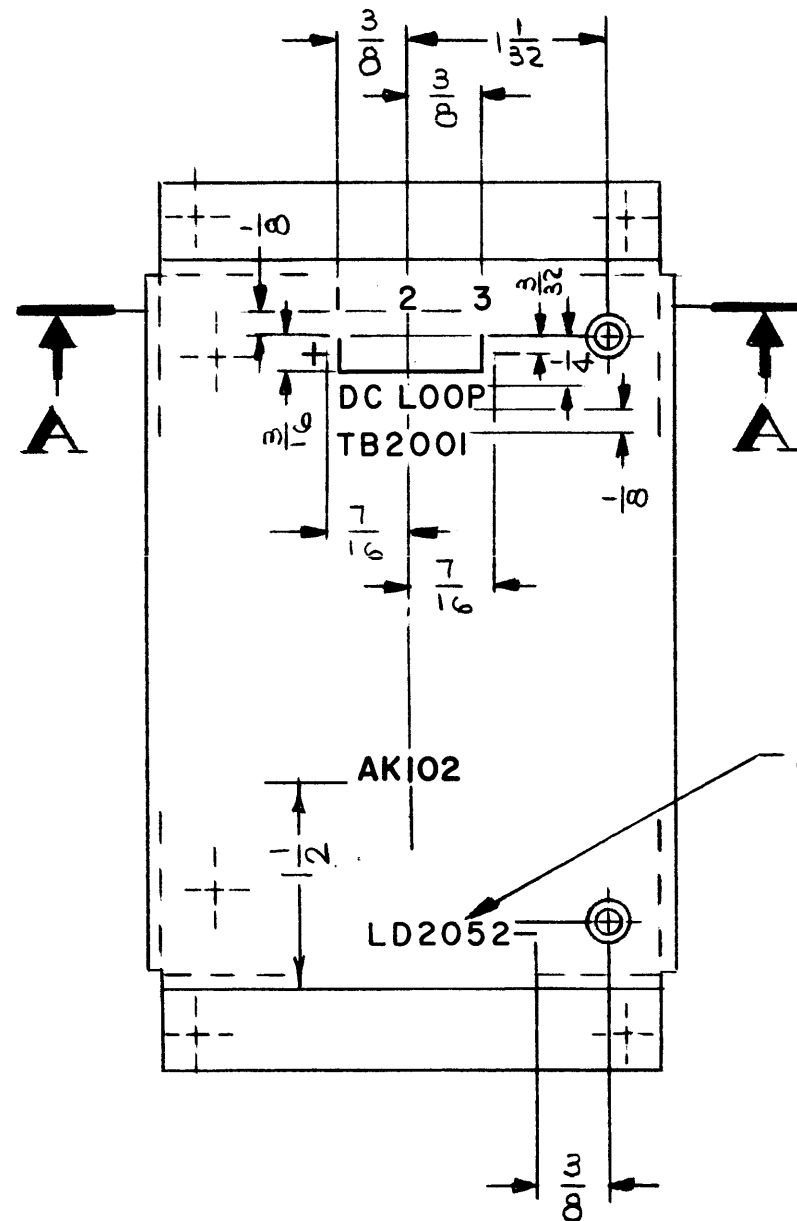


VIEW A-A



LD2052 B

REVISIONS						
SYM	DESCRIPTION	DATE	EMN NO.	DRAFT	CHKD	APPD
	ADDED VIEW A-A & R9504 MARKING	4/4/66		JL		B/B
Ø	ORIGINAL RELEASE FOR PRODUCTION	7/8/66				JL
A	ADDED DC LOOP, + & -; RELOCATED TB2001	6/15/66	16407	JL		JL
B	ADD. "AK102" MARKING; FAK102 TO ASS'Y NO BLOCK	10/13/66	17036	HLA		B/B



MARK TMC PT. NO. W/LATEST REV. LETTER

MARKING PROCESS: AS PER TMC SPECIFICATION S-727.

LETTERING: 1/8 HIGH BLACK GOTHIC, LOCATED AS SHOWN.

REF. MS4843

REQ'D.	ITEM	PART NUMBER	DESCRIPTION	SYMBOL
FE. EATON LIST OF MATERIAL				
MATERIAL		THE TECHNICAL MATERIEL CORP. MAMARONECK, NEW YORK		
FINISH		TITLE MARKING-CHASSIS, ELECTRICAL (AUXILIARY KEYS)		
UNLESS OTHERWISE SPECIFIED DIMENSIONS ARE IN INCHES AND INCLUDE CHEMICALLY APPLIED OR PLATED FINISHES		DRAWN J. LESHINSKI	DATE 1/19/66	FINAL APPROVAL <i>[Signature]</i>
		CHECKED <i>[Signature]</i>	DATE 4-11-66	DATE 4/15/66
DECIMALS .X ± .05 .XX ± .01 .XXX ± .005		FRACTIONS ± 1/64 ANGLES ± 0° 30'		DATE 4/15/66
TOLERANCES		ELECT. DES. <i>[Signature]</i>		DATE 4/15/66
		MECH. DES. <i>[Signature]</i>		DATE 4/15/66
		M/L A KLEIN		DATE 4/15/66
LD2052				B
SHEET				REV. LTR.

1	RTIH-1	AK102
Q'TY./UNIT	MODEL USED ON	ASS'Y. NO.
SCALE 1/1	CODE	
THE CONTENTS OF THIS DRAWING ARE THE EXCLUSIVE PROPERTY OF THE TECHNICAL MATERIEL CORP. ITS UNAUTHORIZED USE OR REPRODUCTION IN WHOLE OR IN PART IS STRICTLY FORBIDDEN.		

NOTES