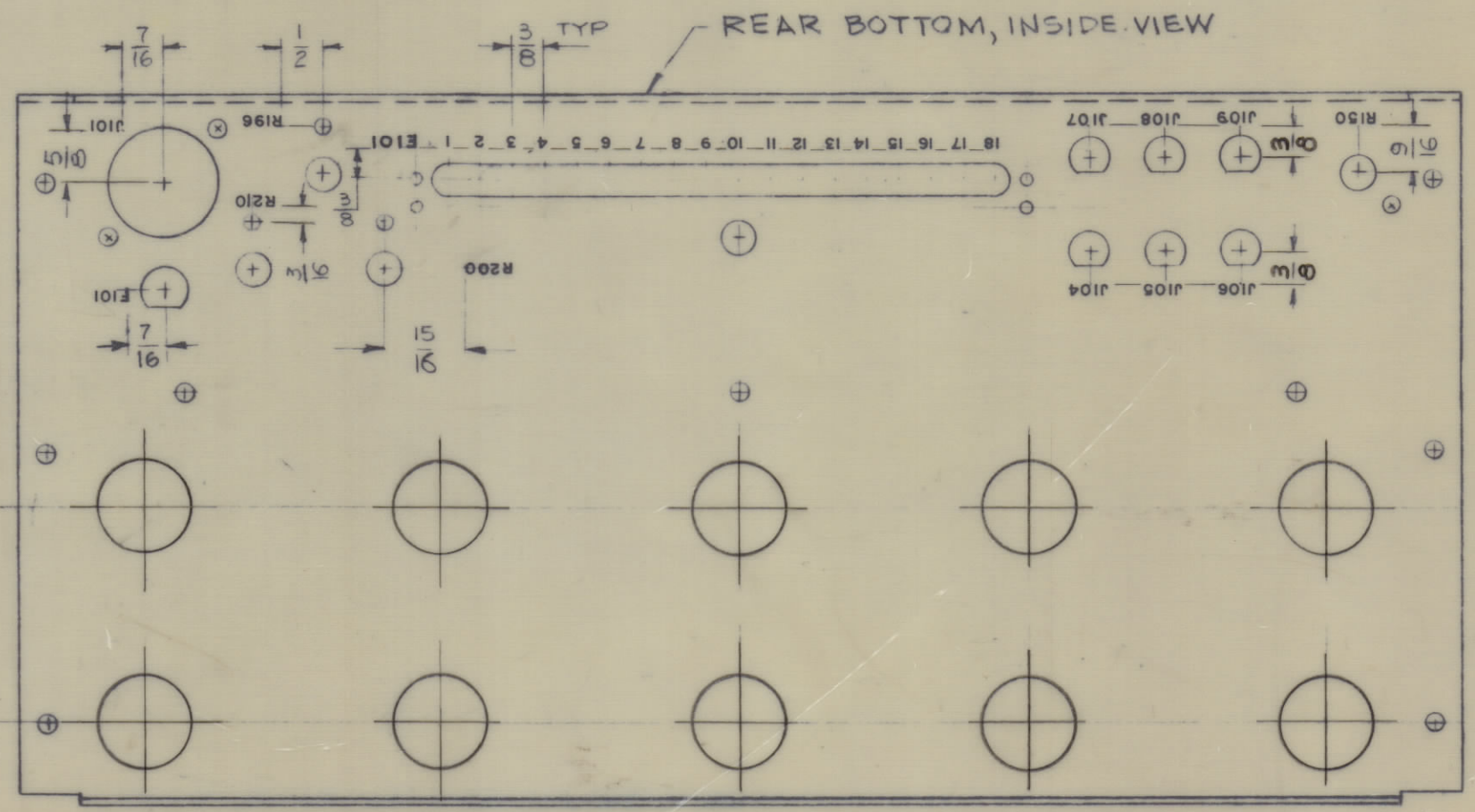
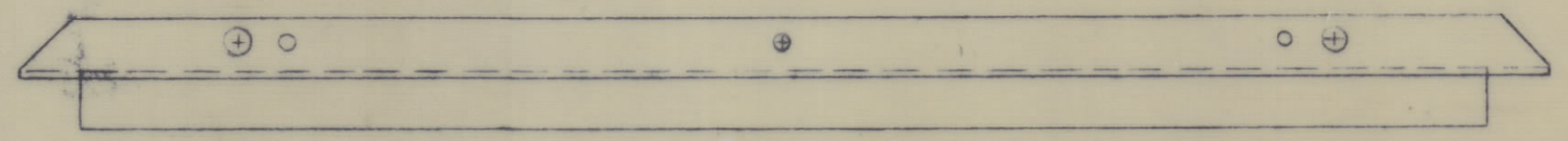
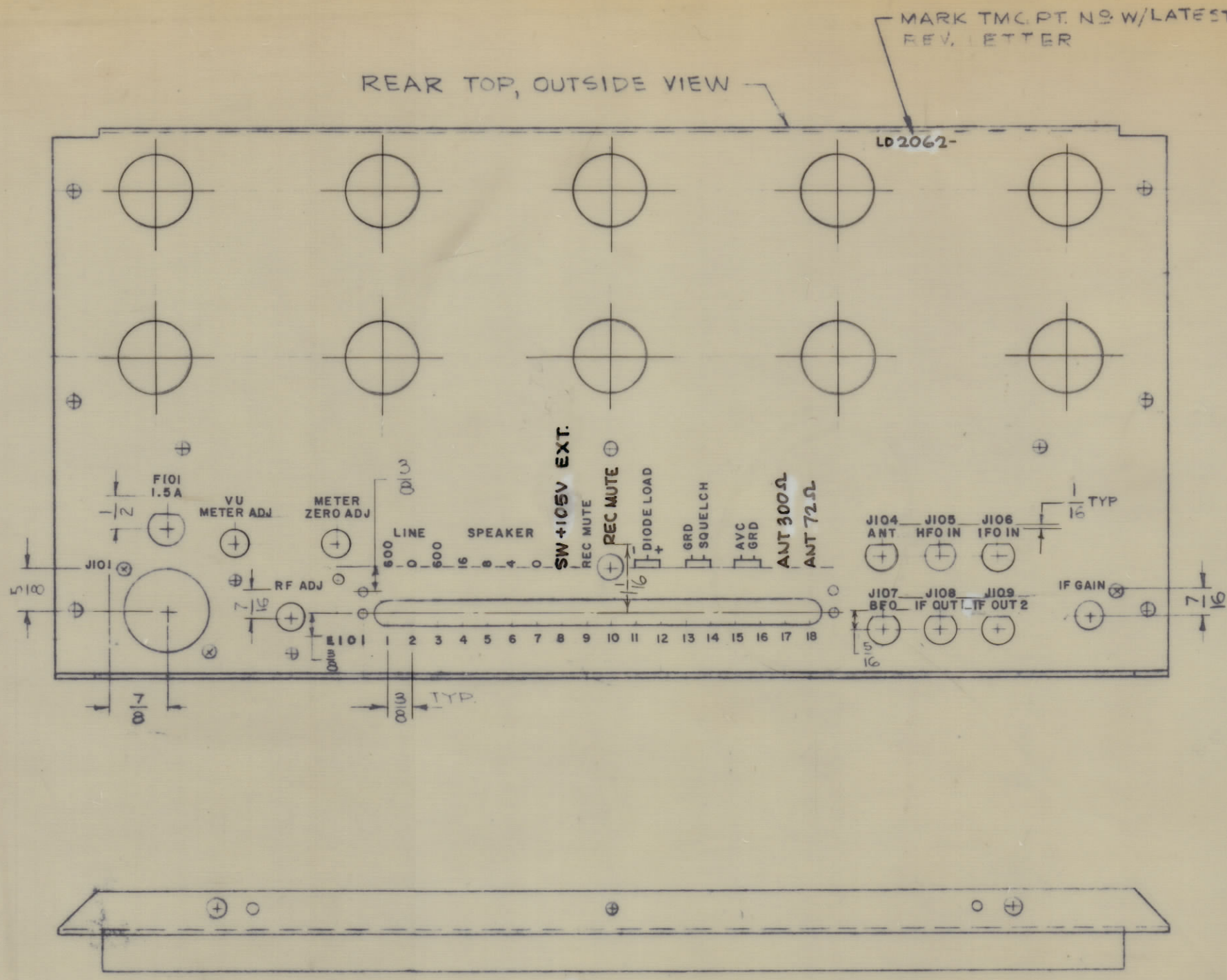


REVISIONS							
ZONE	SYM	DESCRIPTION	DATE	E.M.N. NO.	DRAFT	CHKD	APPD
	Ø	ORIGINAL RELEASE FOR PRODUCTION	3/24/66	Ø	FLA		
5F	A	ADDED "EXT" TO TERM B, E101	7-21-66	16582	RME		



NOTE -
UNLESS OTHERWISE SPECIFIED:
1)- MARKING PROCESS: AS PER TMC SPECIFICATION S-727
2) - LETTERING: 1/8 HIGH, BLACK GOTHIC AS SHOWN
3) - SPACING WILL BE 1/16 BETWEEN LETTER GROUPS
4) - ALL LETTERING TO BE CENTERED ABOUT CENTER LINES OF HOLES APPROX. AS SHOWN

LD2062 A

REF: MS-2961

1	GPR-92A	A3328
Q'TY./UNIT	MODEL USED ON	ASS'Y. NO.
SCALE	CODE	
1:2		

THE CONTENTS OF THIS DRAWING ARE THE EXCLUSIVE PROPERTY OF THE TECHNICAL MATERIEL CORP. ITS UNAUTHORIZED USE OR REPRODUCTION IN WHOLE OR IN PART IS STRICTLY FORBIDDEN.

REQ'D	ITEM	PART NUMBER	DESCRIPTION	SYMBOL
STRUMER LIST OF MATERIAL				
MATERIAL			THE TECHNICAL MATERIEL CORP. MAMARONECK, NEW YORK	
FINISH			TITLE MARKING, REAR PANEL	
UNLESS OTHERWISE SPECIFIED DIMENSIONS ARE IN INCHES AND INCLUDE CHEMICALLY APPLIED OR PLATED FINISHES		DRAWN G.D.L.	DATE 3/24/66	FINAL APPROVAL [Signature]
DECIMALS X ± .05 .XX ± .01 .XXX ± .005		TOLERANCES	CHECKED [Signature]	DATE 3/24/66
FRACTIONS ± 1/64 ANGLES ± 0° 30'			ELECT. DES. C. LONGHI	DATE 3/24/66
			MECH. DES.	DATE

2 M/L A. KLEIN 3/24/66 1