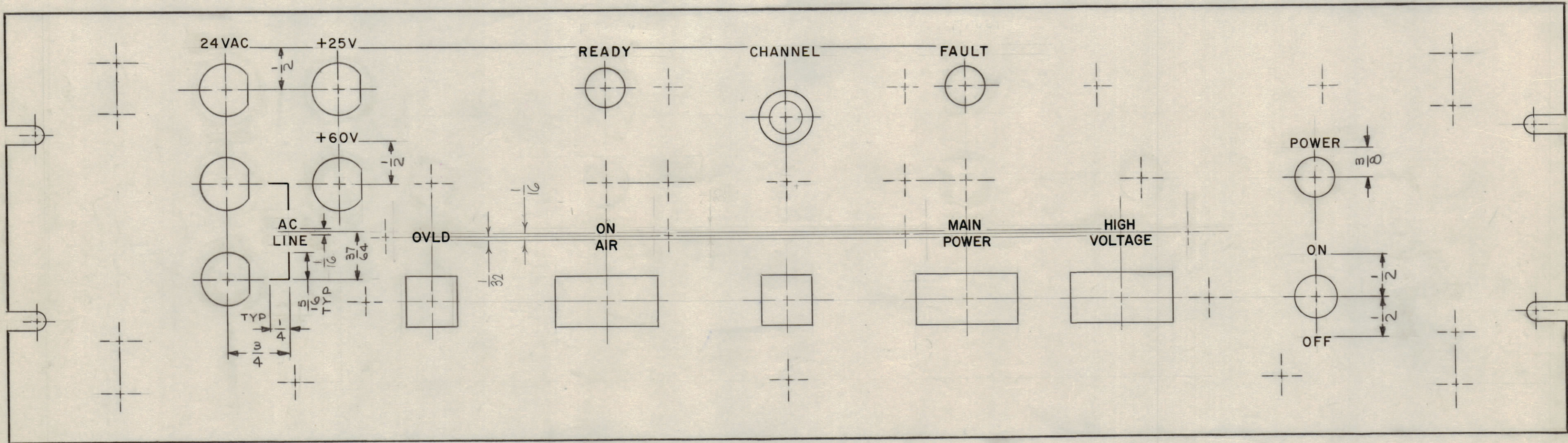


REVISIONS						
ZONE	SYM	DESCRIPTION	DATE	E.M.N. NO.	DRAFT	CHKD APPD
F3, 6	X1	REVISED LOCATION OF "FAULT" & "READY"	7/27/66		JL	
	X2	ON "AC LINE" 1/16 DIM WAS 3/32, "OVL D" ON AIR, MAIN PWR & H.V. ADDED	9/9/66	VM	Jc	JCB
	Ø	ORIGINAL RELEASE FOR PRODUCTION	9.12.66	M	lhw	file



HEIGHT OF LETTERS	DEPTH OF STROKE	WIDTH OF STROKE
1/8	.010	.020
LINES	.010	.015

- UNLESS OTHERWISE SPECIFIED -
- 1- ENGRAVING PER TMC SPEC. S 566.
  - 2- ALL LETTER GROUPS TO BE CENTERED ON HOLES.
  - 3- ALL LETTERS & LINES TO BE WHITE FILLED.

REF: MS 4984

REQ'D.	ITEM	PART NUMBER	DESCRIPTION	SYMBOL
F. E. EATON LIST OF MATERIAL				
MATERIAL		THE TECHNICAL MATERIEL CORP. MAMARONECK, NEW YORK		
FINISH		TITLE MARKING - PANEL FRONT		
UNLESS OTHERWISE SPECIFIED DIMENSIONS ARE IN INCHES AND INCLUDE CHEMICALLY APPLIED OR PLATED FINISHES		DRAWN J. LESHINSKI	DATE 3/17/66	FINAL APPROVAL DATE 9/9/66
DECIMALS .X ± .05 .XX ± .01 .XXX ± .005		CHECKED JCB	DATE 7/9/66	DATE 7/9/66
TOLERANCES		ELECT. DES. MECH. DES. R. Batina	DATE 7/9/66	DATE 7/9/66
THE CONTENTS OF THIS DRAWING ARE THE EXCLUSIVE PROPERTY OF THE TECHNICAL MATERIEL CORP. ITS UNAUTHORIZED USE OR REPRODUCTION IN WHOLE OR IN PART IS STRICTLY FORBIDDEN.		LD2064 Ø		
		SHEET 1 OF 2		
		REV. LTR.		

NOTES

LD2064 Ø

