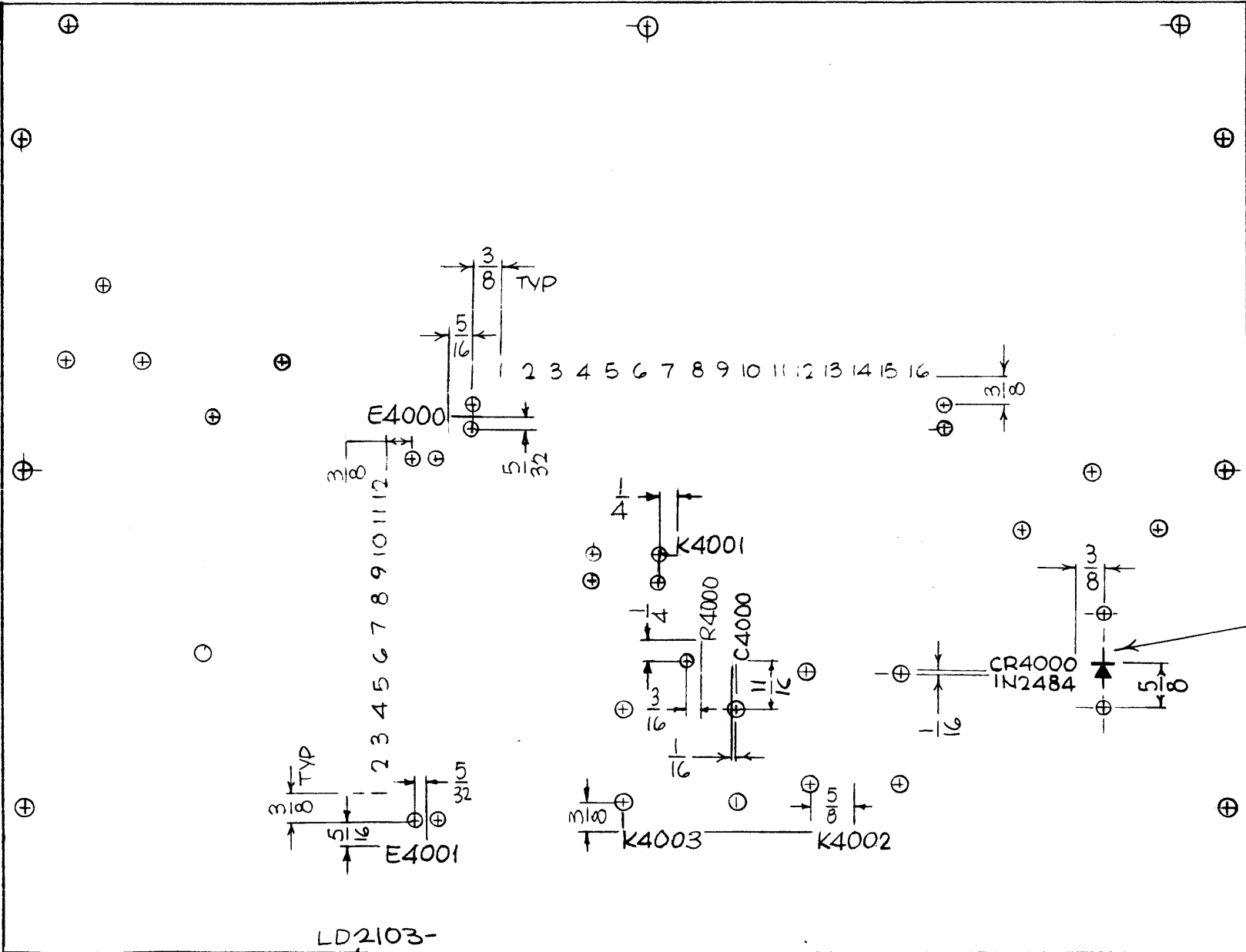


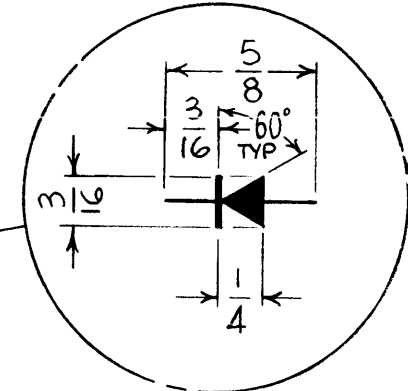
LD2103

REVISIONS

SYM	DESCRIPTION	DATE	E.M.N. NO.	DRAFT	CHKD	APPD
X	EXP. RELEASE	6-16-66	X	APB		
X1	TERMINAL NO'S ADDED FOR E4000 & E4001	6-22-66	M	Jc	APB	
X2	R4000 DELETED, CR4000 & SYMBOL ADDED	8-4-66	M	Jc	APB	
X3	R4000 RE INSTATED	11-23-66		MP		
Ø	ORIGINAL RELEASE FOR PRODUCTION	11/30/66	Ø	CV		



MARKING PROCESS:
AS PER TMC SPEC 5727
MARKING 1/8 HIGH BLACK
GOTHIC.



REF: MS 4997-

MARK TMC P/N
1/8 HIGH GOTHIC
W/LATEST REV.
LETTER.

LD2103-

Q'TY./UNIT	MODEL USED ON	ASS'Y. NO.
1	TCP-3	A5487
1	TCP-2	A5487
1	TCP-1	A5487

SCALE 1:2
CODE A

THE CONTENTS OF THIS DRAWING ARE THE EXCLUSIVE PROPERTY OF THE TECHNICAL MATERIEL CORP. ITS UNAUTHORIZED USE OR REPRODUCTION IN WHOLE OR IN PART IS STRICTLY FORBIDDEN.

REQ'D.	ITEM	PART NUMBER	DESCRIPTION	SYMBOL
F. BUDETTI LIST OF MATERIAL				
MATERIAL			THE TECHNICAL MATERIEL CORP. MAMARONECK, NEW YORK	
FINISH			TITLE MARKING, CHASSIS, CONTROL PANEL AS PER TMC SPEC 5-727	
UNLESS OTHERWISE SPECIFIED DIMENSIONS ARE IN INCHES AND INCLUDE CHEMICALLY APPLIED OR PLATED FINISHES			DRAWN: <i>MP</i> CHECKED: <i>APB</i> ELECT. DES.: <i>RET</i> MECH. DES.: <i>aa</i> M/L: <i>ad</i>	DATE: 4-17-66 DATE: DATE: DATE: 2-1-66
DECIMALS .X ± .05 .XX ± .01 .XXX ± .005			TOLERANCES FRACTIONS ± 1/64 ANGLES ± 0° 30'	
SHEET: LD2103 REV. LTR.: Ø			FINAL APPROVAL: <i>APB</i> DATE: 12/1/66	

NOTES