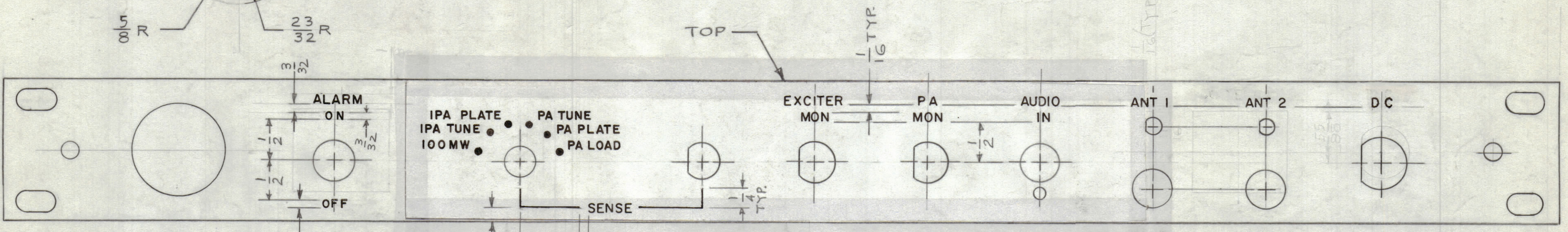
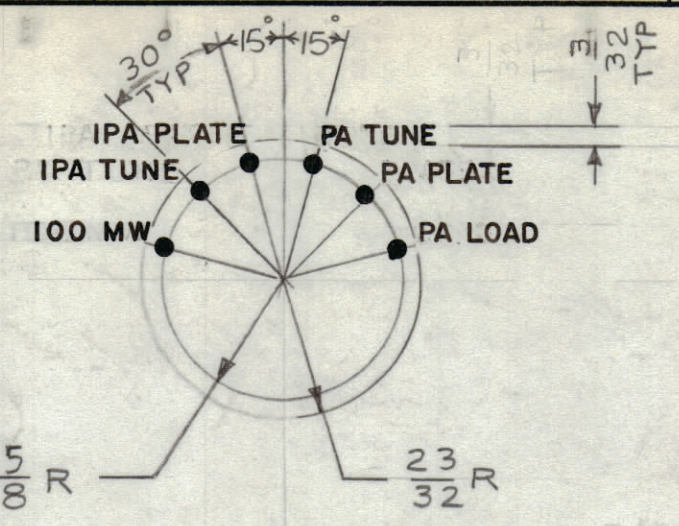


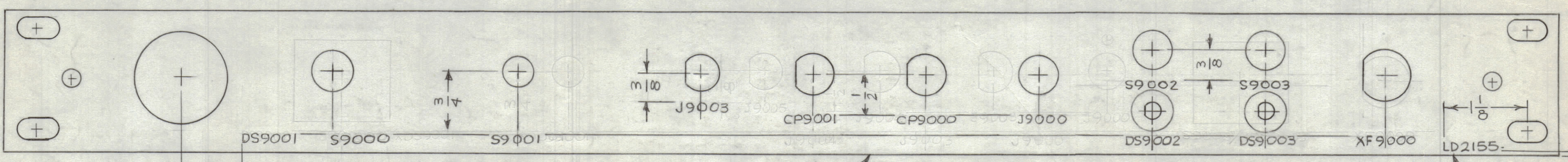
REVISIONS						
ZONE	SYM	DESCRIPTION	DATE	E.M.N. NO.	DRAFT	CHKD
	X	EXP. RELEASE	8-29-66	X	JBC	
	X1	COMPLETELY REVISED	9-12-66	X1	JBC	
	X2	J9004, J9003, J9000 WERE S9004, S9003, S9000	10-3-66	X2		
	X3	J9003 WAS J9005, CP9001 WAS J9004, CP9000 WAS J9003	10-4-66	X3		
	Ø	ORIGINAL RELEASE FOR PRODUCTION	12/30/66	Ø	RME	



HEIGHT OF LETTERS	DEPTH OF STROKE	WIDTH OF STROKE
3/32	.010	.020
1/8	.010	.015
DOTS	.010	1/16 DIA
LINES	.010	.015

- NOTES:
 UNLESS OTHERWISE SPECIFIED
 1. ALL ENGRAVING TO BE 1/8 HIGH GOTHIC, PER TMC SPEC 5566.
 2. ALL ENGRAVING TO BE WHITE FILLED.
 3. ALL LETTER GROUPS TO BE CENTERED ON HOLES OR CUTOUTS.

ENGRAVING
FRONT VIEW



MARKING
REAR VIEW

LETTERING: 1/8 HIGH BLACK GOTHIC, LOCATED AS SHOWN, PER TMC SPEC. 5727.

MARK TMC P/N 1/8 HIGH GOTHIC W/LATEST REV LETTER

REF: MS 5055-

REQ'D.	ITEM	PART NUMBER	DESCRIPTION	SYMBOL
F. BUDETTI LIST OF MATERIAL				
MATERIAL		THE TECHNICAL MATERIEL CORP. MAMARONECK, NEW YORK		
FINISH		TITLE		
		MARKING, FRONT PANEL		
UNLESS OTHERWISE SPECIFIED DIMENSIONS ARE IN INCHES AND INCLUDE CHEMICALLY APPLIED OR PLATED FINISHES		DRAWN JBC	DATE 3/12/66	FINAL APPROVAL [Signature]
DECIMALS .X ± .05		CHECKED	DATE	DATE 12/30/66
FRACTIONS ± 1/64		ELECT. DES. [Signature]	DATE	DATE
ANGLES ± 0° 30'		MECH. DES. [Signature]	DATE	DATE
TOLERANCES		SHEET		REV. LTR.
		LD2155		Ø

Q'TY./UNIT	MODEL USED ON	ASS'Y. NO.
1	AX-646	A5552
SCALE	CODE	
	A	

NOTES

THE CONTENTS OF THIS DRAWING ARE THE EXCLUSIVE PROPERTY OF THE TECHNICAL MATERIEL CORP. ITS UNAUTHORIZED USE OR REPRODUCTION IN WHOLE OR IN PART IS STRICTLY FORBIDDEN.