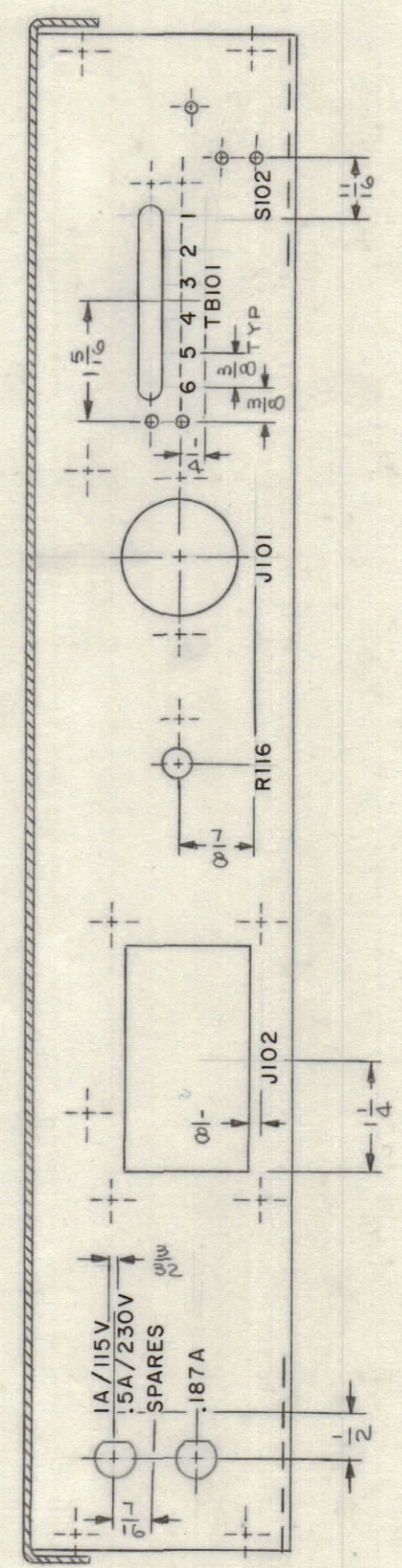
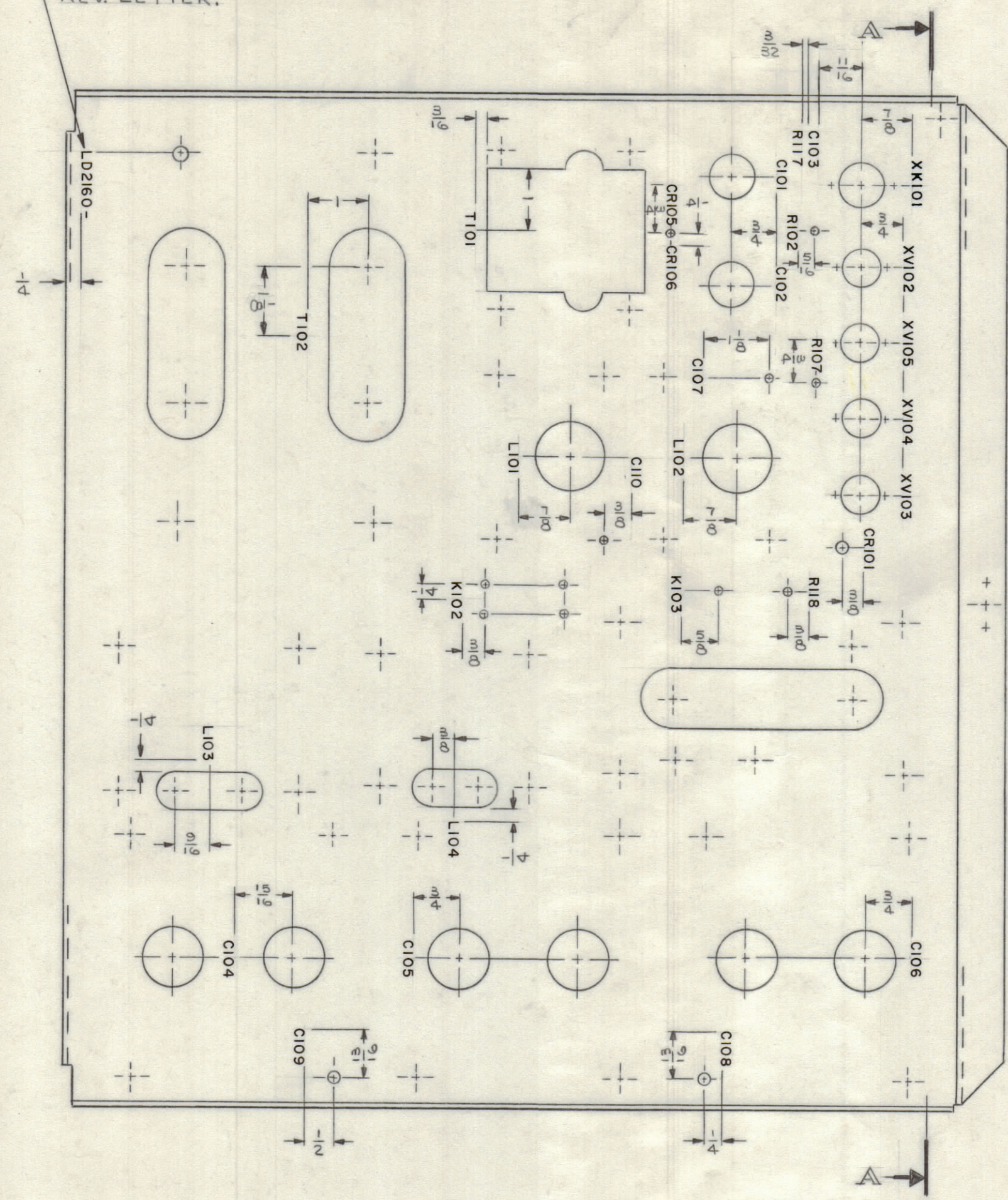


| REVISIONS | | | | | | |
|-----------|------|---------------------------------|---------|-----------|-------|-----------|
| SYM | ZONE | DESCRIPTION | DATE | E.M.N.NO. | DRAFT | CHKD APPD |
| X | | EXP. RELEASE | 1/9/66 | | JL | |
| Ø | | ORIGINAL RELEASE FOR PRODUCTION | 3/20/67 | Ø | CV | |

MARK TMC PT. NO. W/LATEST REV. LETTER.



VIEW A-A

- UNLESS OTHERWISE SPECIFIED -

- 1-MARKING PROCESS: AS PER TMC SPECIFICATION S-727.
- 2-LETTERING: 1/8 HIGH BLACK GOTHIC, LOCATED AS SHOWN.

MAXIMUM ALLOWABLE TOLERANCES HAVE BEEN DETERMINED AND ANY DEVIATIONS WILL BE CAUSE FOR REJECTION.

REF.: MS5076

| QTY REQ | ITEM | PART NO. | DESCRIPTION | SYMBOL | |
|----------------------------|------|----------|--|--------------|-------|
| L. BUTLER BILL OF MATERIAL | | | | | |
| FINAL APPROVAL | | DATE | THE TECHNICAL MATERIEL CORP. MAMARONECK, NEW YORK | | |
| MECH. DES. | | DATE | | | |
| ELECT. DES. | | DATE | | | |
| CHECKED | | DATE | | | |
| DRAWN | | DATE | MARKING - CHASSIS ELECT. MAIN (PSP-350C) | | |
| J. LESHINSKI | | 10/4/66 | | | |
| APPROVED FOR BUSHIPS | | CODE | SIZE | DWG. NO. | ISSUE |
| CONTRACT NO. | | 82679 | C | LD2160 | Ø |
| | | SCALE | 1/2 | SHEET 1 OF 2 | |