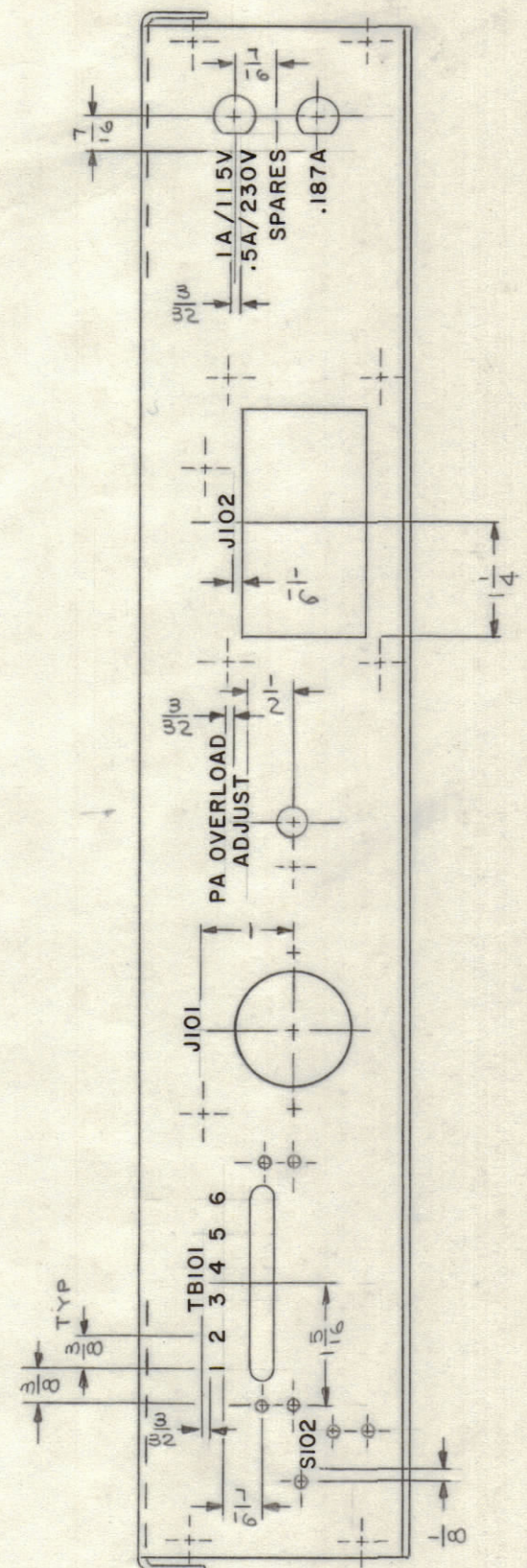
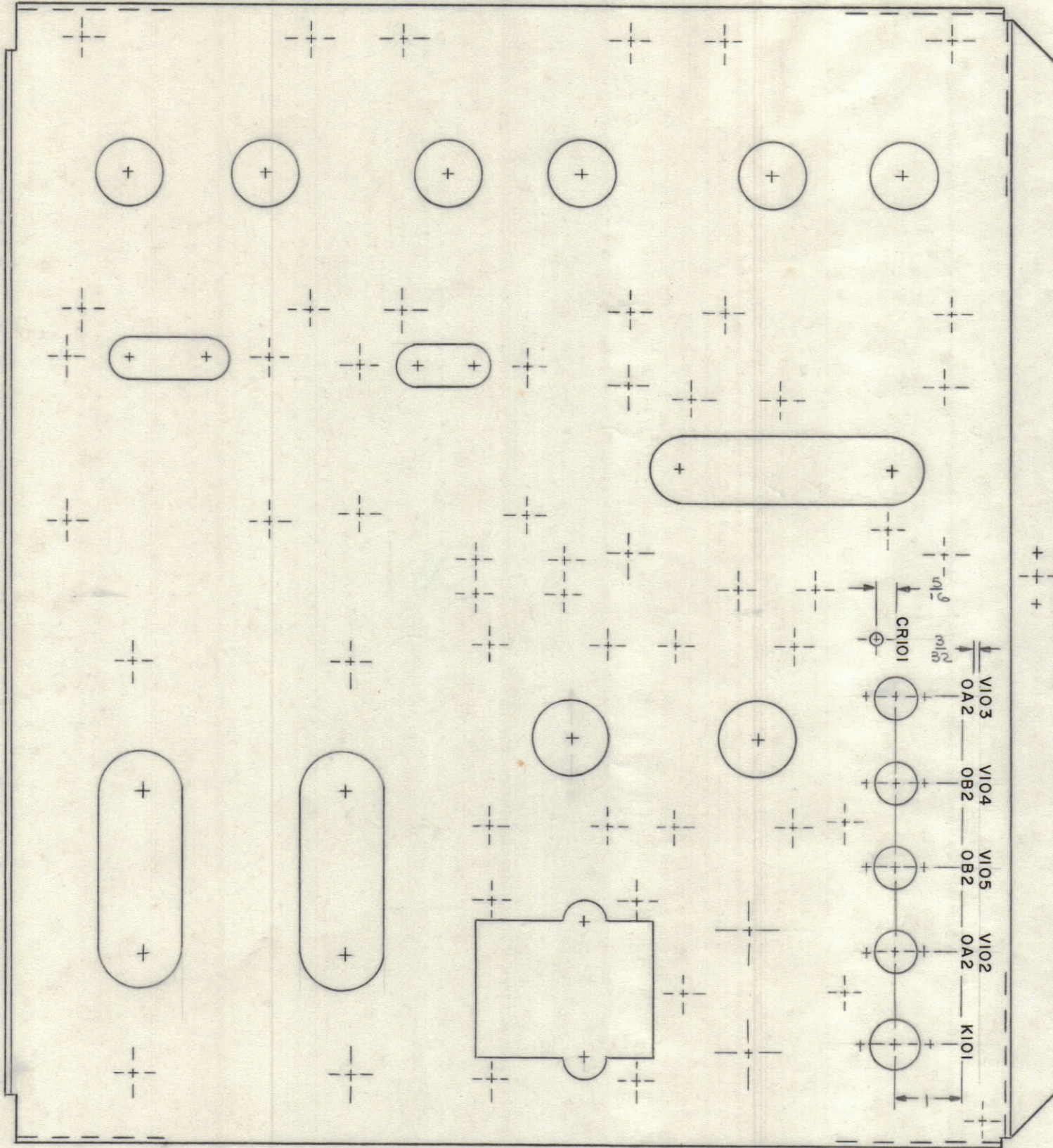


REVISIONS						
SYM	ZONE	DESCRIPTION	DATE	E.M.N.O.	DRAFT	CHKD APPD
X		EXP. RELEASE	10/4/66		JL	
Ø		ORIGINAL RELEASE FOR PRODUCTION	3/20/67	Ø	CV	



- UNLESS OTHERWISE SPECIFIED -

- 1- MARKING PROCESS: AS PER TMC SPECIFICATION S-727.
- 2- LETTERING: 1/8 HIGH BLACK GOTHIC, LOCATED AS SHOWN.

UNLESS OTHERWISE SPECIFIED
DIMENSIONS ARE IN INCHES
TOLERANCES ON
FRACTIONS DECIMALS ANGLES
±1/64 ±.005 ±1/2°

MAXIMUM
ALLOWABLE TOLERANCES HAVE BEEN
DETERMINED AND ANY DEVIATIONS
WILL BE CAUSE FOR REJECTION.

REF.: MS 5076

QTY REQ	ITEM	PART NO.	DESCRIPTION	SYMBOL	
	L. BUTLER BILL OF MATERIAL				
	FINAL APPROVAL	DATE	THE TECHNICAL MATERIEL CORP. MAMARONECK, NEW YORK		
	MECH. DES.	DATE			
	ELECT. DES.	DATE			
	CHECKED	DATE			
	DRAWN	DATE	MARKING-CHASSIS, ELECT., MAIN (PSP-350C)		
	J. LESHINSKI	10/4/66			
	APPROVED FOR BUSHIPS	CODE	SIZE	DWG. NO.	ISSUE
		82679	C	LD2160	Ø
	CONTRACT NO.	SCALE	SHEET 2 OF 2		
		1/2			