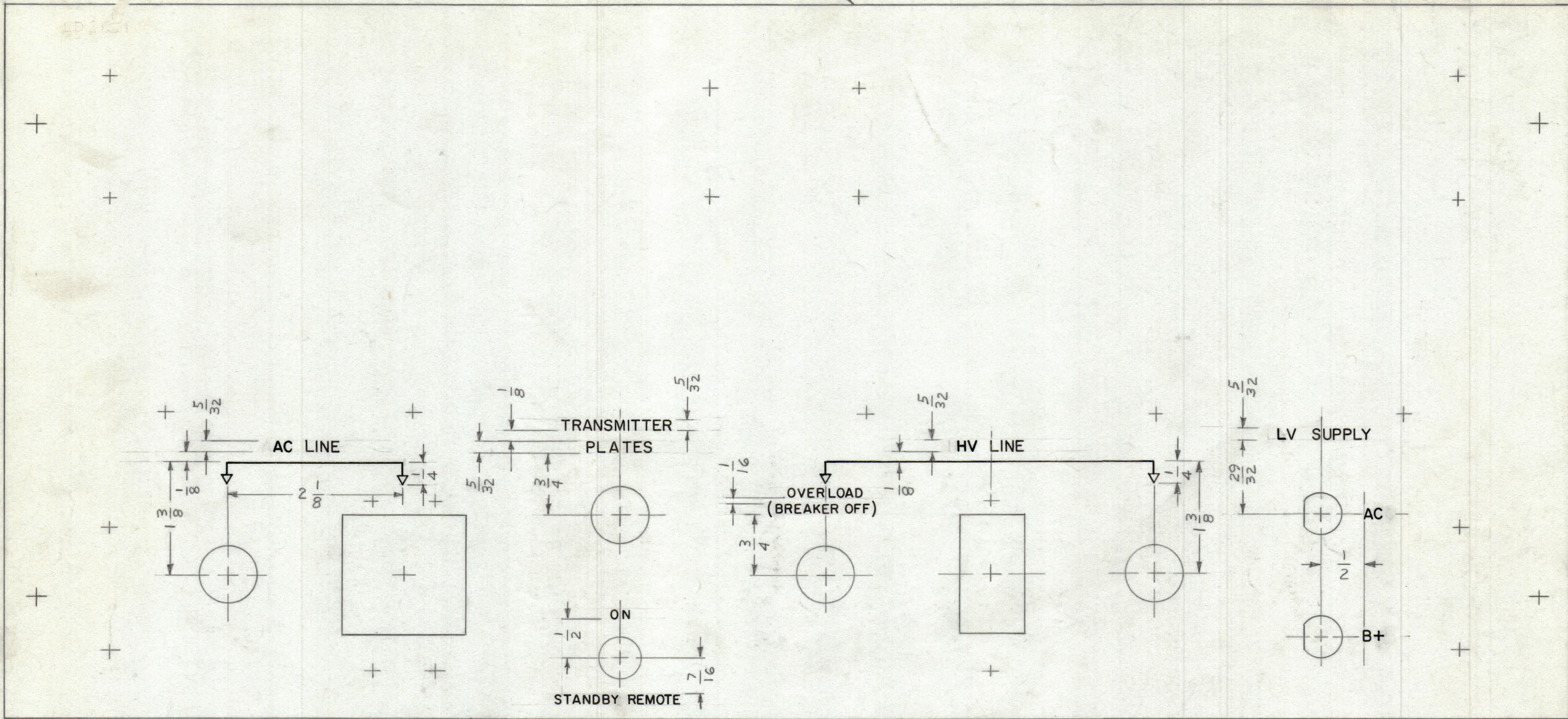


MARK TMC F/N 1/8 HIGH GOTHIC
W/1/16 ST. REV. LETTER

REVISIONS							
ZONE	SYM	DESCRIPTION	DATE	E.M.N. NO.	DRAFT	CHKD	APPD
	X	EXP. RELEASE	9-9-66	X	JBC		
	XI	LV, HV, AC & B+ RELOCATED	3/20/67				
	Ø	ORIGINAL RELEASE FOR PRODUCTION	3/20/67	Ø	CV		

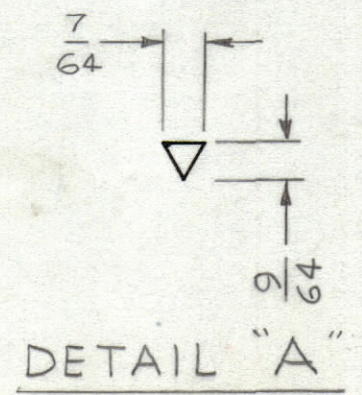
TOP OF PANEL



FRONT OF PANEL SHOWN

- UNLESS OTHERWISE SPECIFIED:
1. ALL LETTERS TO BE 1/8 HIGH, WHITE GOTHIC.
 2. ALL LETTERING TO BE CENTERED ON HOLES, CUTOUTS OR INDICATING LINES.
 3. ENGRAVING TO BE IN ACCORDANCE WITH TMC SPEC. S566 (SEE CHART).
 4. ALL ARROWHEADS TO BE WHITE OUTLINE. (SEE DETAIL "A").

HEIGHT OF LETTERS	DEPTH OF STROKE	WIDTH OF STROKE
5/32	.010	.020
1/8	.010	.020
DOTS	.010	1/16 DIA
LINES	.010	.015
ARROHEADS	.010	~



REF: MS5075

REQ'D.	ITEM	PART NUMBER	DESCRIPTION	SYMBOL
LIST OF MATERIAL				
MATERIAL			THE TECHNICAL MATERIEL CORP. MAMARONECK, NEW YORK	
FINISH			TITLE MARKING, FRONT PANEL	
UNLESS OTHERWISE SPECIFIED DIMENSIONS ARE IN INCHES AND INCLUDE CHEMICALLY APPLIED OR PLATED FINISHES			DRAWN JBC	DATE 9-9-66
			CHECKED JBC	DATE 3/20/67
			ELECT. DES.	DATE
			MECH. DES.	DATE
			SHEET 1 OF 2	

1	PSP350-C	
Q'TY./UNIT	MODEL USED ON	ASS'Y. NO.
SCALE 1:1	CODE	

THE CONTENTS OF THIS DRAWING ARE THE EXCLUSIVE PROPERTY OF THE TECHNICAL MATERIEL CORP. ITS UNAUTHORIZED USE OR REPRODUCTION IN WHOLE OR IN PART IS STRICTLY FORBIDDEN.

NOTES

LD2161