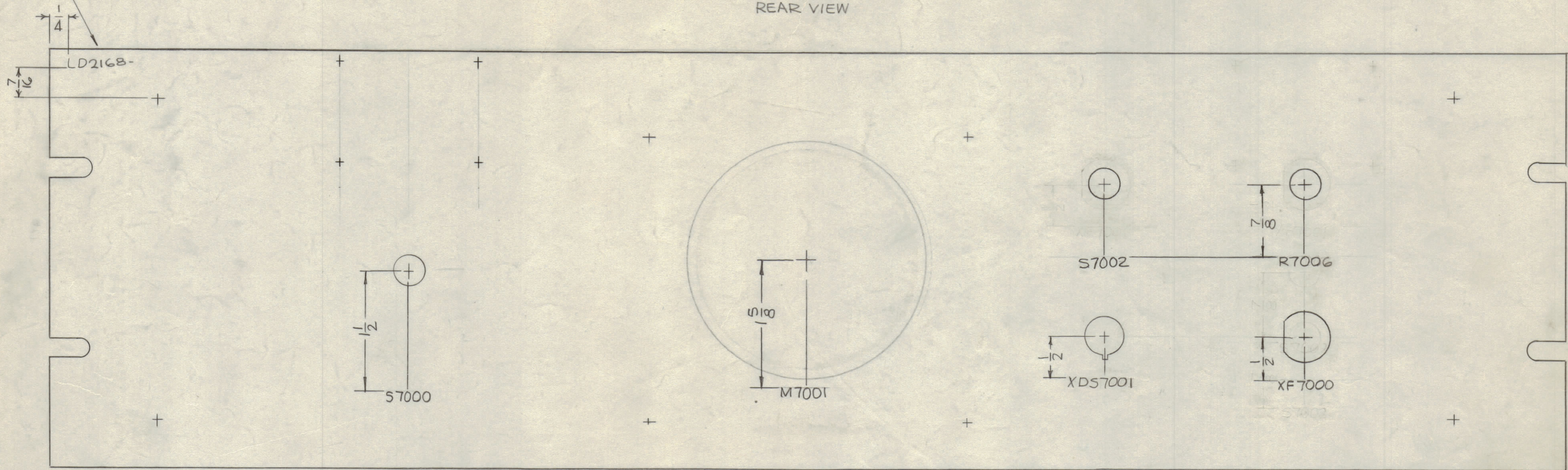


MARK TMC P/N
1/8 HIGH GOTHIC W/LATEST
REV. LETTER.

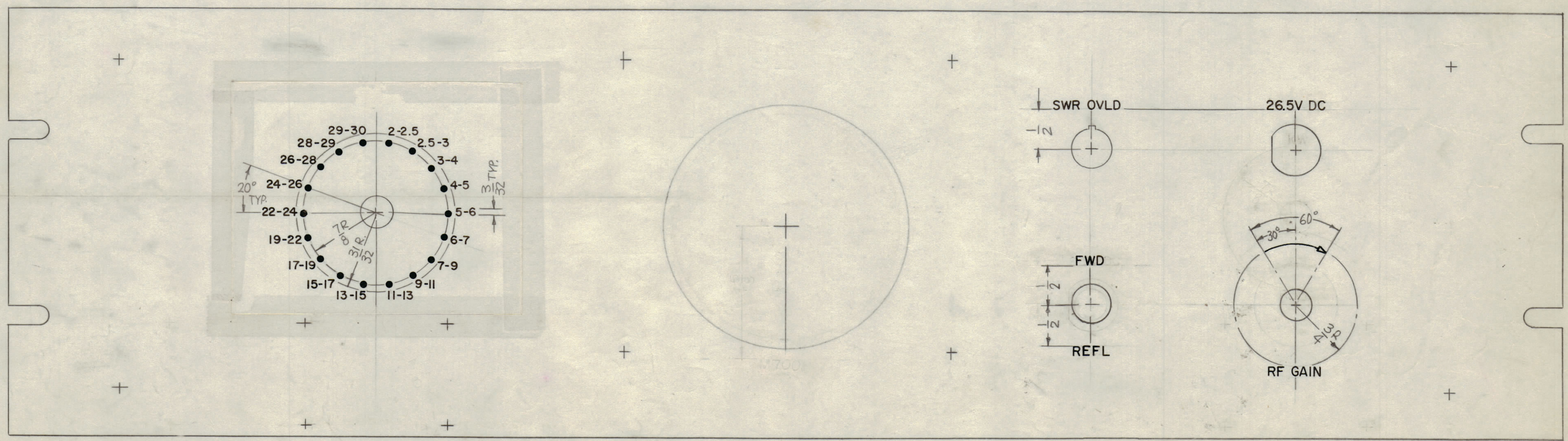
MARKING PROCESS: AS PER TMC SPECIFICATION S-727.
LETTERING: 1/8 HIGH BLACK GOTHIC, LOCATED AS SHOWN.

REVISIONS							
ZONE	SYM	DESCRIPTION	DATE	E.M.N. NO.	DRAFT	CHKD	APPD
X		EXP. RELEASE	9-12-66	X			
X1		RF GAIN ADDED, F7001 & S7002 RELOCATED	9-20-66	X1			
X2		S7000, XDS7001, XF7000, R7006, WERE S7001, XDS7002, XF7001, R7003	9-27-66	X2			
Ø		ORIGINAL RELEASE FOR PRODUCTION	2-23-67	Ø	CV		

MARKING
REAR VIEW

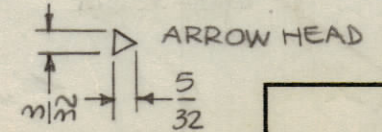


ENGRAVING
FRONT VIEW



HEIGHT OF LETTERS	DEPTH OF STROKE	WIDTH OF STROKE
3/32	.010	.015
1/8	.010	.020
DOTS	.010	1/16 DIA.
LINES	.010	.015
ARROWHEAD	.010	SEE DETAIL

UNLESS OTHERWISE SPECIFIED:
 1- ALL ENGRAVING TO BE 1/8 HIGH GOTHIC AS PER TMC SPEC. S-566
 2- ALL ENGRAVING TO BE WHITE FILLED.
 3- ALL LETTER GROUPS TO BE CENTERED ON HOLES.
 4- ALL ARROWHEADS WHITE OUTLINE FILL.



NOTES

Q'TY./UNIT	MODEL USED ON	ASS'Y. NO.
1	SWCB-3K	
SCALE	CODE	
1:1	A	

THE CONTENTS OF THIS DRAWING ARE THE EXCLUSIVE PROPERTY OF THE TECHNICAL MATERIEL CORP. ITS UNAUTHORIZED USE OR REPRODUCTION IN WHOLE OR IN PART IS STRICTLY FORBIDDEN.

REF: MS5090

REQ'D.	ITEM	PART NUMBER	DESCRIPTION	SYMBOL
	F. BUDETTI			
LIST OF MATERIAL				
MATERIAL			THE TECHNICAL MATERIEL CORP. MAMARONECK, NEW YORK	
FINISH			TITLE MARKING, PANEL FRONT AS PER TMC SPEC. S727	
UNLESS OTHERWISE SPECIFIED DIMENSIONS ARE IN INCHES AND INCLUDE CHEMICALLY APPLIED OR PLATED FINISHES		DRAWN	DATE	FINAL APPROVAL
DECIMALS .X ± .05 .XX ± .01 .XXX ± .005		CHECKED	DATE	
FRACTIONS ± 1/64 ANGLES ± 0° 30'		ELECT. DES.	DATE	
TOLERANCES		MECH. DES.	DATE	
			SHEET	REV. LTR.

LD2168
Ø