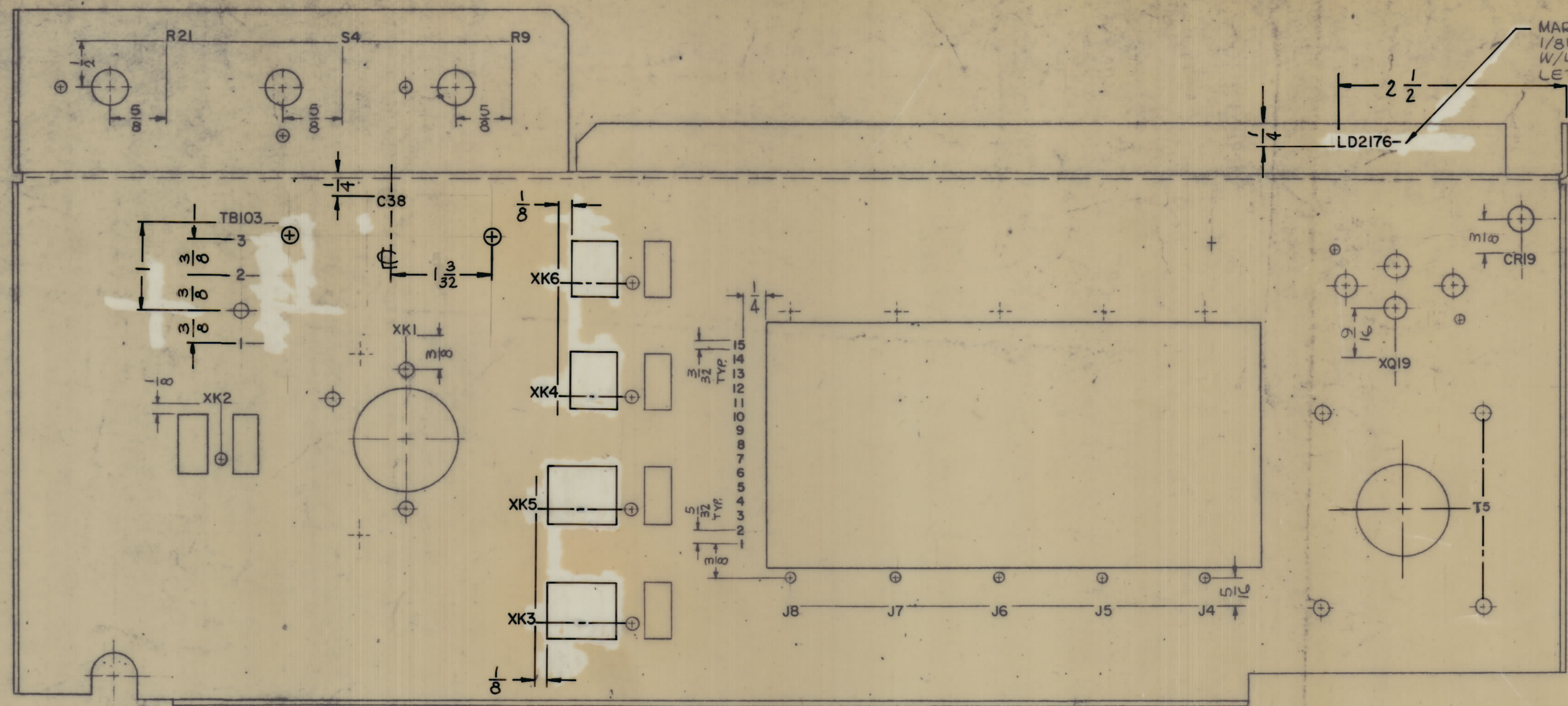
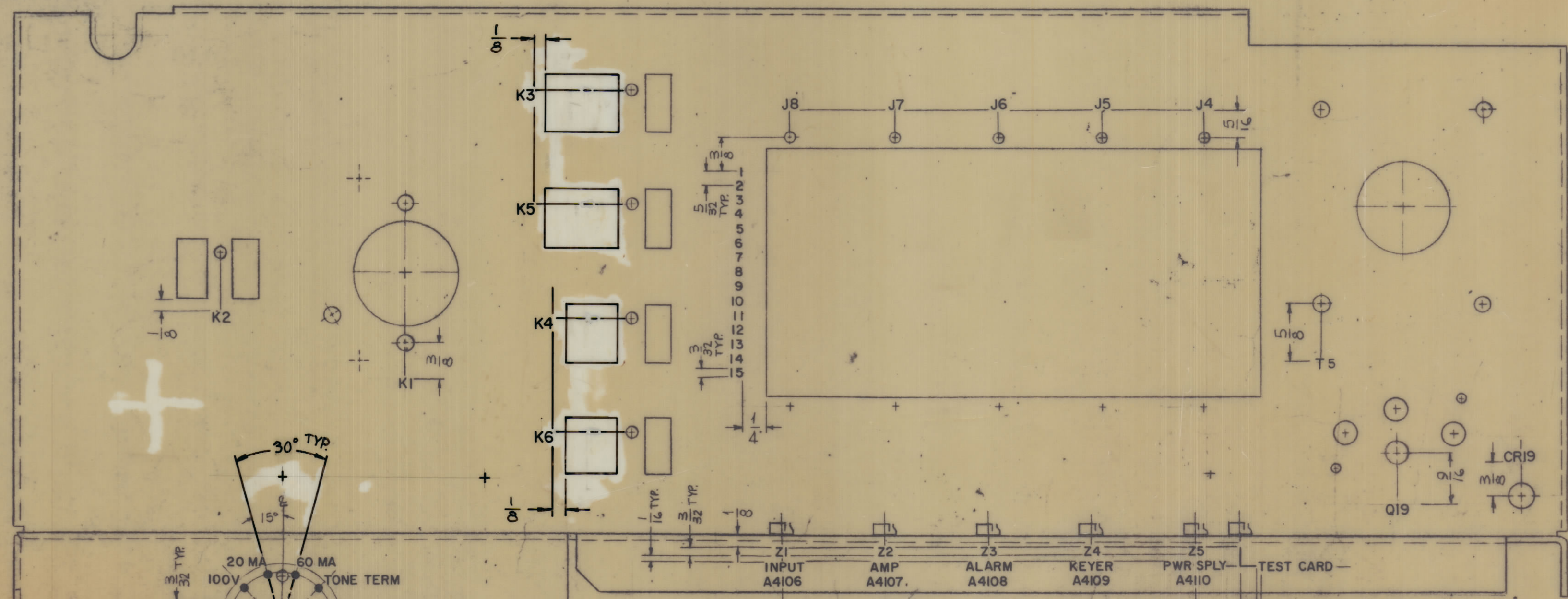


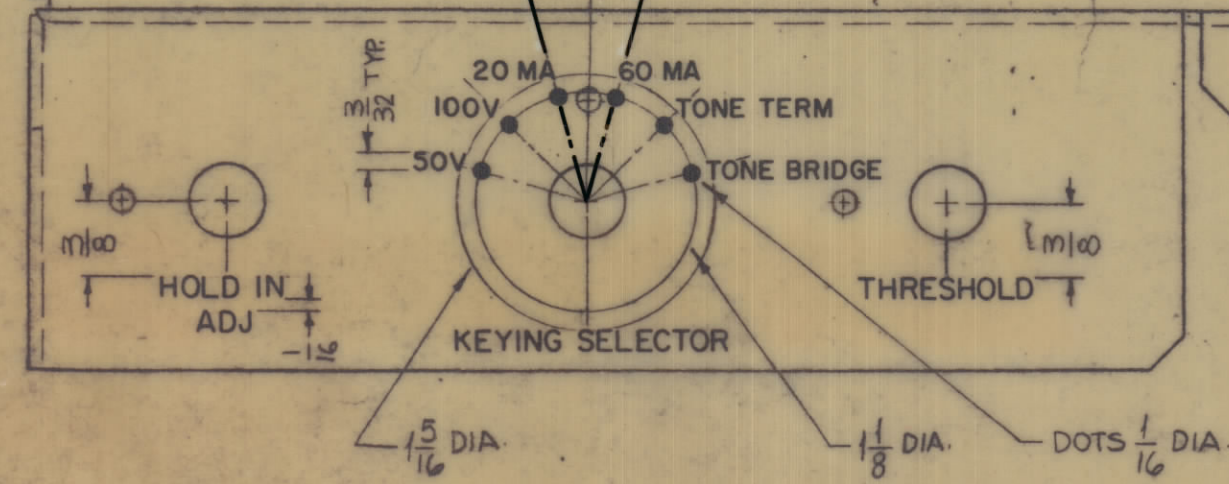
REVISIONS						
ZONE	SYM	DESCRIPTION	DATE	E.M.N. NO.	DRAFT	APPD.
X		EXPERIMENT RELEASE	10/28/66		WHD	
		ORIGINAL RELEASE FOR PRODUCTION	2/26/67		WHD	



BOTTOM VIEW



TOP VIEW



UNLESS OTHERWISE SPECIFIED:
 MARKING PROCESS: AS PER TMC SPECIFICATION S-727.
 LETTERING: 1/8 HIGH BLACK GOTHIC, LOCATED AS SHOWN.
 ALL LETTER GROUPS TO BE CENTERED ON HOLES CUTOUTS & OR INDICATING LINES.

MARK TMC PART NO
 1/8 HIGH GOTHIC
 W/LATEST REV.
 LETTER.

LD2176

REF: MS6000

REQD.	ITEM	PART NUMBER	DESCRIPTION	SYMBOL
BUTLER				
MATERIAL				
FINISH				
LIST OF MATERIAL				
THE TECHNICAL MATERIEL CORP. MAMARONECK, NEW YORK				
TITLE: MARKING CHASSIS, MAIN				
MARKING PROCESS: AS PER TMC SPEC S727				
DRAWN	WHD	DATE	10/27/66	FINAL APPROVAL
CHECKED	WHD	DATE	10/27/66	
ELECT. DES.		DATE		
MECH. DES.		DATE		
PARTS LIST				
QTY	UNIT	MODEL USED ON	ABB. Y. NO.	
1		KMCU-2		
SCALE	1:1	CODE	A	
UNLESS OTHERWISE SPECIFIED DIMENSIONS ARE IN INCHES AND INCLUDE CHEMICALLY APPLIED OR PLATED FINISHES				
DECIMALS	±.05	FRACTIONS	± 1/64	
ANGLES	±.01	ANGLES	±.07°	
TOLERANCES	±.002			
THE CONTENTS OF THIS DRAWING ARE THE EXCLUSIVE PROPERTY OF THE TECHNICAL MATERIEL CORP. ITS UNAUTHORIZED USE OR REPRODUCTION IN WHOLE OR IN PART IS EXPRESSLY FORBIDDEN.				

LD2176