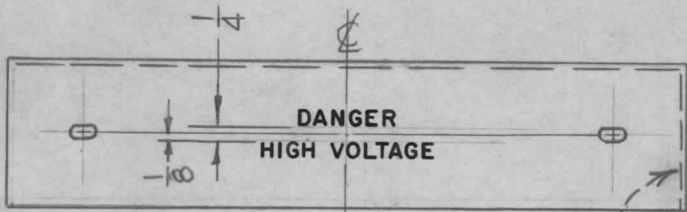
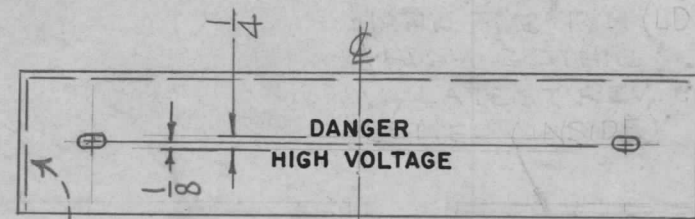


REQ. PER UNIT	USED ON			LD2181	Ø
	MODEL	ASS'Y. NO.	DATE		
1	40KEF		11-22-66		
1	10KEF				



VIEW - A

SEE TMC NO. MARKING NOTE



VIEW - B

SEE TMC NO. MARKING NOTE

NOTE:

MARK TMC P/NO. LD2181- -  
 1/8 HIGH GOTHIC W/LATEST  
 REV. LETTER. (INSIDE)

TMC P/N	REF.	VIEW
LD2181-1	PX 973-1	A
LD2181-2	PX 973-2	A
LD2181-3	PX 973-3	B

MARKING PROCESS: AS PER TMC SPECIFICATION S-727.

LETTERING: 1/2 HIGH RED GOTHIC, LOCATED AS SHOWN.

REF: PX 973-1 & 2 & 3

SYM	DESCRIPTION	DATE	CH. NO.	DRAFTS	CHECKER	ENG. APP.	REQ. ITEM	PART NO.	F. BUDETTI DESCRIPTION	SYMBOL	
Ø	ORIGINAL RELEASE FOR PRODUCTION	3-20-67		L.A.K.					THE TECHNICAL MATERIEL CORP. MAMARONECK, NEW YORK  MARKING COVER PROTECT XFMR AS PER TMC SPEC. S727		
X2	PICTORIAL REVISED	3-14-67	X2	<i>[Signature]</i>		<i>[Signature]</i>					
X1	LD2181-3. ADDED	1-25-67	X1	<i>[Signature]</i>		<i>[Signature]</i>					
X	EXP. RELEASE	11-22-66	X	<i>[Signature]</i>	<i>[Signature]</i>	<i>[Signature]</i>					
	UNLESS OTHERWISE SPECIFIED DIMENSIONS ARE IN INCHES AND INCLUDE CHEMICALLY APPLIED OR PLATED FINISHES	SCALE	1:4								
	DECIMALS .X ± .05 XX ± .01 XXX ± .005	FRACTIONS ± 1/64 ANGLES ± 0° 30'	CODE	A							
	TOLERANCES						TYPE & TEMPER	HEAT TREAT. SPEC.	DRAWN	CHECKED	FINAL APPROVAL
									<i>[Signature]</i>	<i>[Signature]</i>	<i>[Signature]</i>
							FINISH & SPEC. NO.	ELEC. DES. APP.	MECH. DES. APP.		LD2181 Ø