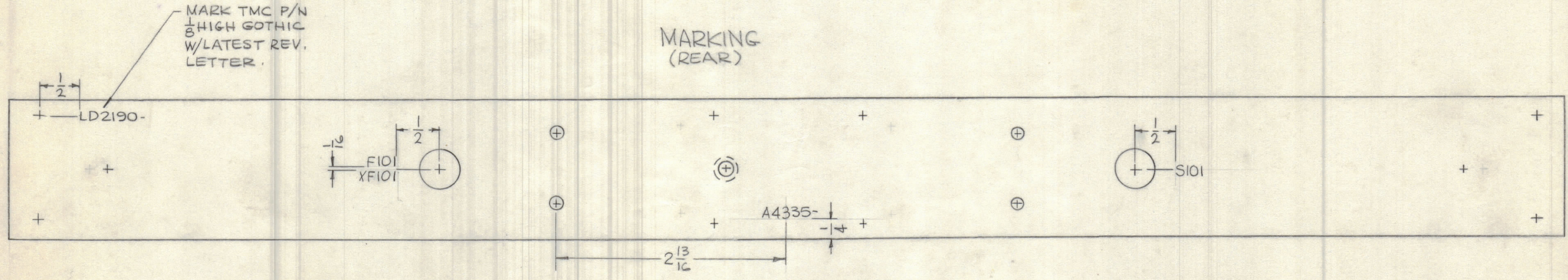


REVISIONS						
SYM	ZONE	DESCRIPTION	DATE	E.M.N. NO.	DRAFT	CHKD APPD
X		EXP. RELEASE	11-19-66			
X1		4 HOLES FOR NAMEPLATE RELOC	1-9-67			
Ø		ORIGINAL RELEASE FOR PRODUCTION	26-67			

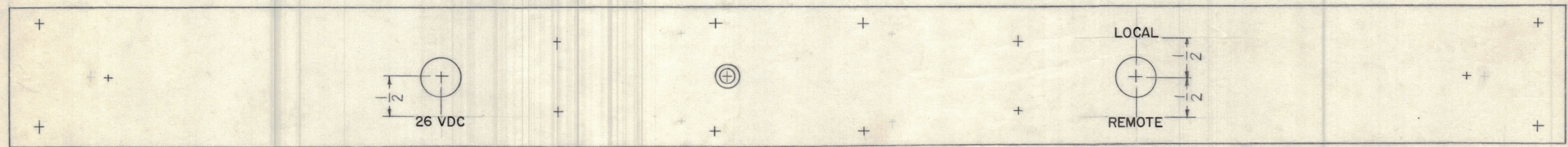
MARKING PROCESS: AS PER TMC SPECIFICATION S-727.
 LETTERING: 1/8 HIGH BLACK GOTHIC, LOCATED AS SHOWN.

MARKING
(REAR)



MARK TMC P/N
 1/8 HIGH GOTHIC
 W/LATEST REV.
 LETTER.

ENGRAVING
(FRONT)



HEIGHT OF LETTER	DEPTH OF LETTER	WIDTH OF STROKE
1/8	.010	.020

UNLESS OTHERWISE SPECIFIED:
 1-ALL LETTER GROUPS CENTERED ON HOLES.
 2-ALL ENGRAVING 1/8 HIGH GOTHIC,
 3-ALL ENGRAVING WHITE FILLED.

MAXIMUM ALLOWABLE TOLERANCES HAVE BEEN DETERMINED AND ANY DEVIATIONS WILL BE CAUSE FOR REJECTION.

REF. MS 6034-

QTY REQ	ITEM	PART NO.	DESCRIPTION	SYMBOL	
EATON BILL OF MATERIAL					
FINAL APPROVAL		DATE	THE TECHNICAL MATERIEL CORP. MAMARONECK, NEW YORK		
MECH. DES.		DATE			
ELECT. DES.		DATE			
CHECKED		DATE	E MARKING, FRONT PANEL MARKING PROCESS: ENGRAVING		
DRAWN		DATE			
APPROVED FOR		CODE	SIZE	DWG. NO.	ISSUE
MODEL: LRCF-1		82679	C	LD2190	Ø
SCALE			SHEET OF		