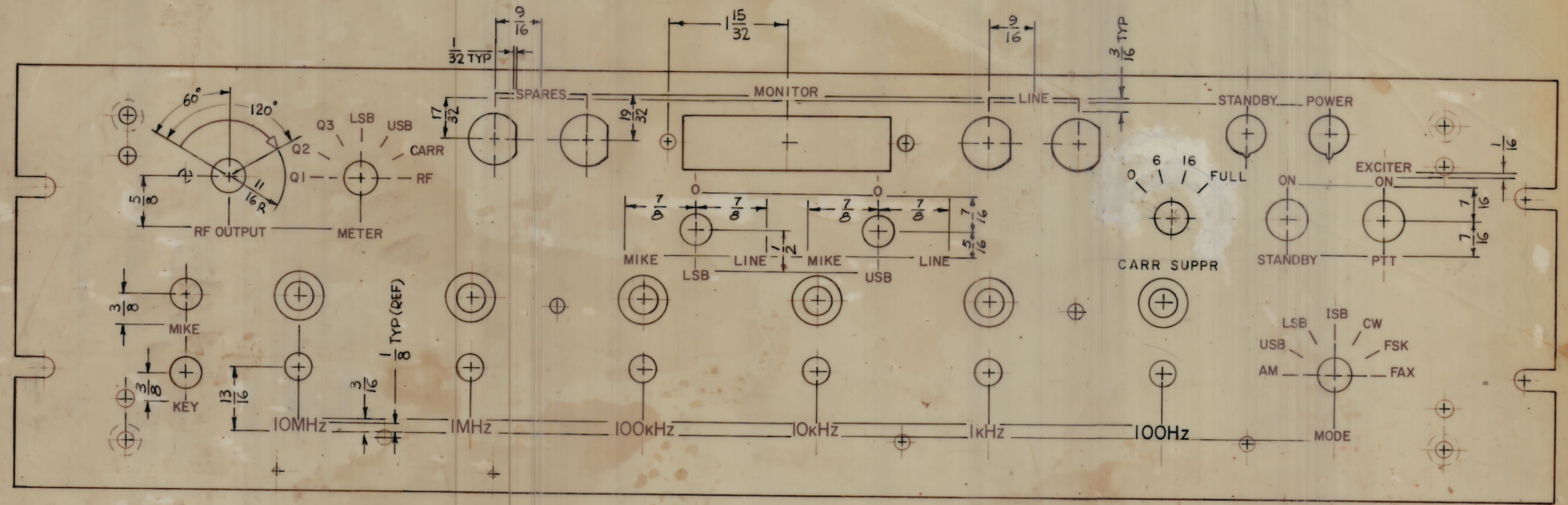
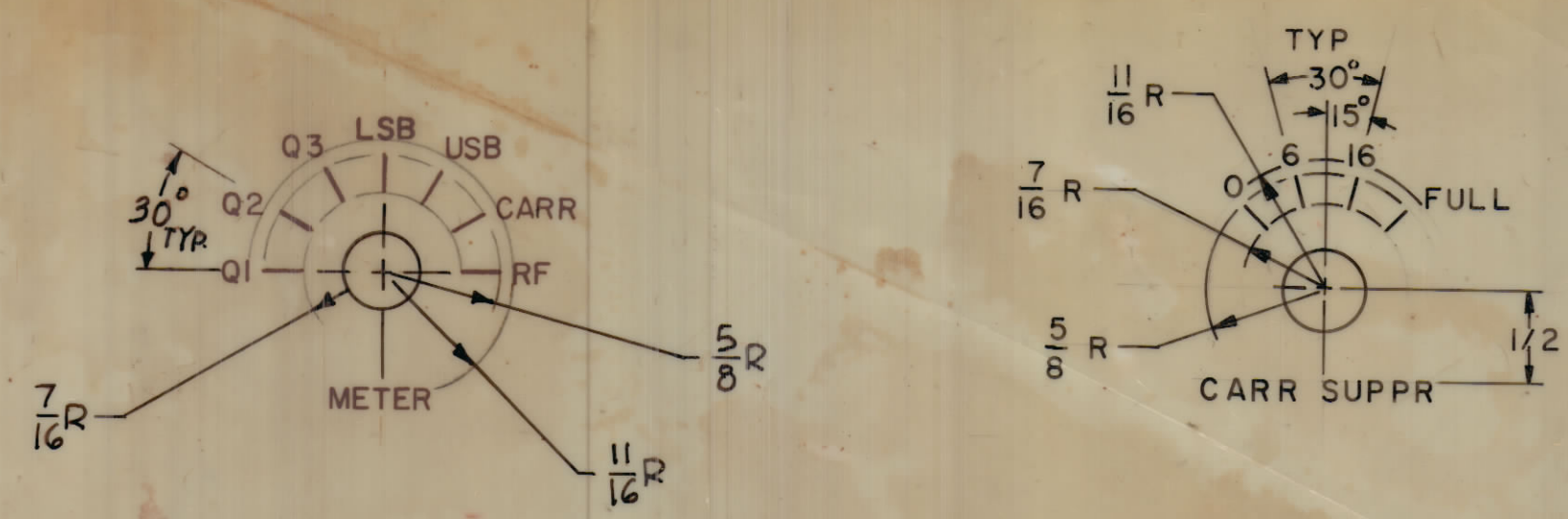


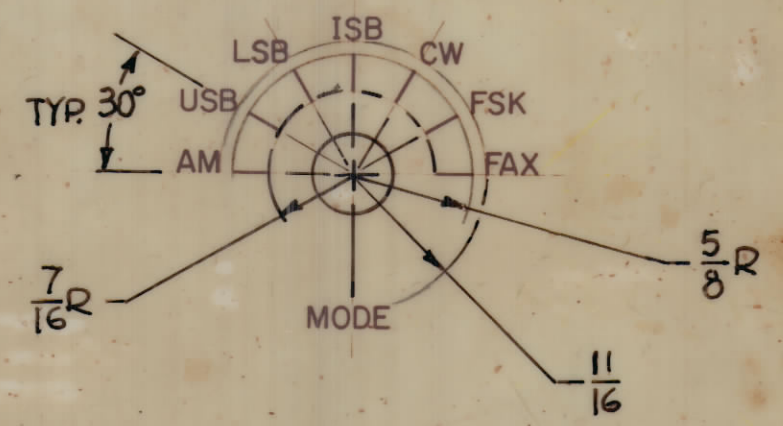
REVISIONS						
ZONE	SYM	DESCRIPTION	DATE	E.M.N. NO.	DRAFT	CHKD.
X		EXP. RELEASE	1-21-67			G.D.L.
X1		SEE SHEET 2 OF 2	4-24-65			G.D.L.
8		ORIGINAL RELEASE FOR PRODUCTION	6-24-67			RG
A		CHG. CARR SUPPR MARKINGS	6-7-71	20374		RZ
B		CHART ADDED FOR LETTERING FOR ALDC CONT.	7-18-71	21560		PH
C		BLACK FILL NOTE ADDED (NOTE 6)	9-6-78	21680		RU WB



FRONT OF PANEL SHOWN

APPLICATION

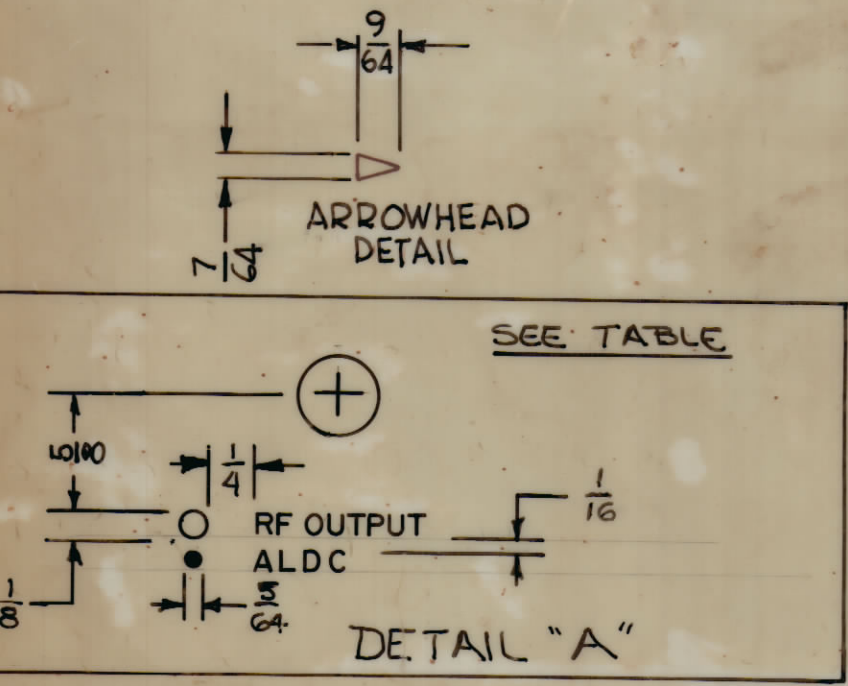
TMC PART No.	DETAIL "A"
LD 2213-1	N/A
LD 2213-2	1



HEIGHT OF LETTER	DEPTH OF STROKE	WIDTH OF STROKE
1/8	.010	.020
3/16	.010	.025
LINES	.010	.015
ARROWHEADS	.010	SEE DETAIL

NOTE:  
 6- WHEN FINISH SPECIFICATIONS S1365 IS APPLIED TO THE FRONT PANEL. ALL ENGRAVING (LETTERS) (ARROWHEADS) & (LINES) ARE TO BE WHITE FILLED.

REF MS6937  
 REF: MS 6081



- UNLESS OTHERWISE SPECIFIED:
- 1- ENGRAVING TO BE 1/8 HIGH GOTHIC, WHITE FILLED.
  - 2- ALL LINES TO BE WHITE FILLED.
  - 3- ALL ARROWHEADS TO BE WHITE FILLED.
  - 4- ALL LETTER GROUPS TO BE CENTERED ON HOLES, CUTOUTS OR INDICATING LINES.
  - 5- ALL ENGRAVING AS PER TMC SPEC. S566

REQ'D.	ITEM	PART NUMBER	DESCRIPTION	SYMBOL
POSE				
LIST OF MATERIAL				
THE TECHNICAL MATERIEL CORP. MAMARONECK, NEW YORK				
MARKING, FRONT PANEL				
DRAWN G.D.L.		DATE 1-31-67		FINAL APPROVAL
CHECKED		DATE 6-26-67		
ELECT. DES.		DATE		
MECH. DES.		DATE		
UNLESS OTHERWISE SPECIFIED DIMENSIONS ARE IN INCHES AND INCLUDE CHEMICALLY APPLIED OR PLATED FINISHES		LD2213		
DECIMALS: .X ± .05, .XX ± .01, .XXX ± .005		C		
FRACTIONS: ± 1/64, ANGLES: ± 0° 30'		SHEET 1 of 2		

1	MMX - ( )	ASSY. NO.
QTY./UNIT	MODEL USED ON	
SCALE 1:1	CODE 3401-451	

THE CONTENTS OF THIS DRAWING ARE THE EXCLUSIVE PROPERTY OF THE TECHNICAL MATERIEL CORP. ITS UNAUTHORIZED USE OR REPRODUCTION IN WHOLE OR IN PART IS STRICTLY FORBIDDEN.

NOTES

LD 2213