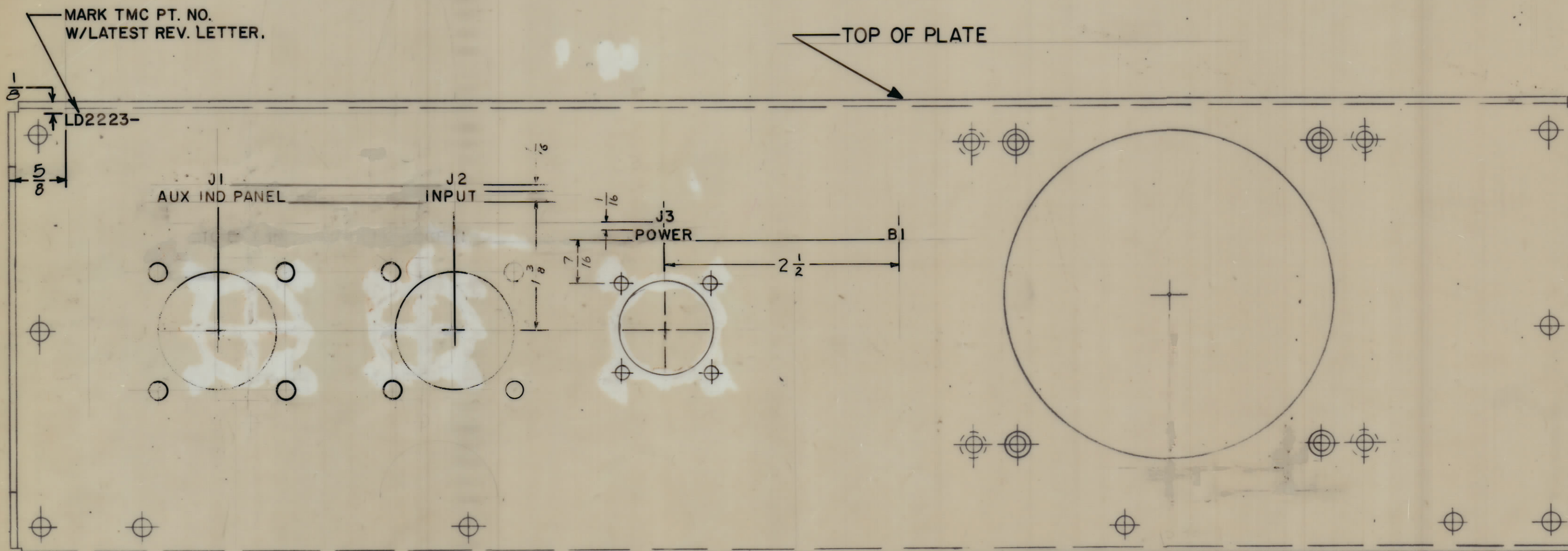


REVISIONS						
ZONE	LTR	DESCRIPTION	DATE	E.M.N.NO	DRAFT	CHKD
	X	EXPERIMENTAL RELEASE	2-26-67	-	HLD	
	X1	RELOC "B3001" ADD MS5103	3/6/67		RMG	
	X2	COMPLETELY REV.	10-27-67		HLD	
	X3	J1, J2 & J3 REVISED	12-12-67	+	HLD	
		ORIGINAL RELEASE FOR PRODUCTION	12-6-68		EG	
	A	HOLE PATTERN REV. LETTERING CLARIFIED	1-23-69	1971?	GE	



MARKING PROCESS: AS PER TMC SPEC. S727.
 LETTERING: 1/8 HIGH BLACK GOTHIC, LOCATED AS SHOWN.

1	RTIH-3	
QTY / UNIT	MODEL USED ON	ASS'Y NO.
APPLICATION		
	CODE	
NOTICE TO PERSONS RECEIVING THIS DRAWING THE TECHNICAL MATERIEL CORPORATION claims proprietary right in the material disclosed herein. This drawing is issued in confidence for engineering information only and may not be reproduced or used to manufacture anything shown herein without permission from THE TECHNICAL MATERIEL CORPORATION to the user. This drawing is loaned for mutual assistance and is subject to recall at any time.		

REF. MS5103

QTY. REQ.	ITEM	PART NO.	DESCRIPTION	SYMBOL
	F. EATON LIST OF MATERIAL			
	FINAL APPROVAL <i>[Signature]</i> MECH. DES. DATE 12/4/68			THE TECHNICAL MATERIEL CORP. MAMARONECK, NEW YORK MARKING PLATE, REAR
	ELECT. DES. DATE			
	CHECKED <i>[Signature]</i> DATE 10-27-67			
	DRAWN H. AUSTIN DATE 2-20-67			
	MATERIAL		SIZE CODE IDENT. NO. DWG. NO.	ISSUE
	FINISH		C 82679 LD2223	A
SCALE 1:1			SHEET / OF /	

LD2223 A B