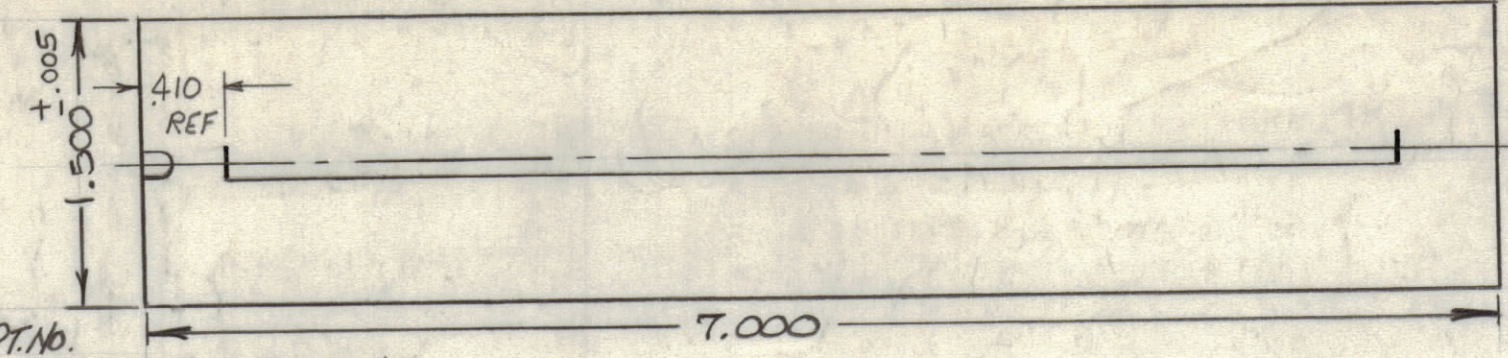


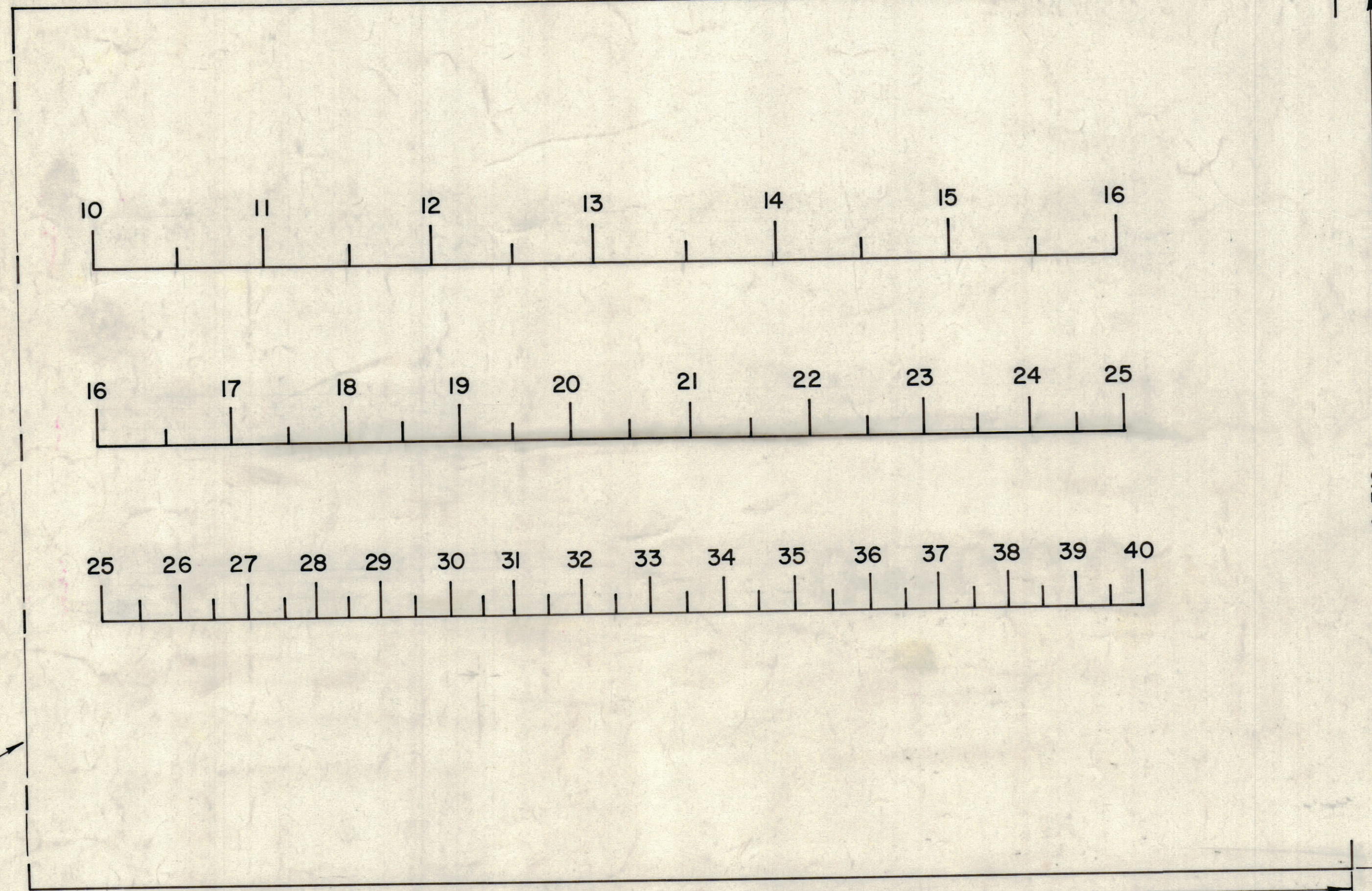
MARK TMC PT. NO.
LD2227- W/LATEST REV. LETTER (ON EDGE)



DETAIL
SCALE 1:1

REVISIONS						
ZONE	LTR	DESCRIPTION	DATE	E.M.N.NO	DRAFT	CHKD APPD
	X	EXPERIMENTAL RELEASE	5-18-67	X	WOL	WOL
	Ø	ORIGINAL RELEASE FOR PRODUCTION	12-19-67	Ø	RG	RG
	A	ADDED .410 DIM. REF (2 PLACES)	4.22.68	18881	H2	EFH

- CALIBRATION DRAWING SPEC. —
1. SPRAY LIGHT PAINT #37875 PER FED SPEC. TFC-595, TO A MAX. LIGHT TRANSMISSION.
 2. ROLLER SCREEN BLACK LINES AND CALIBRATIONS USING DUPLICAN PROCESS #511 BLACK PAINT #37038, PER FED SPEC TT-C-595
 3. OVERCOAT WITH CLEAR COAT OF LACQUER #7300.
 4. REDUCE ARTWORK (2) TWO TO (i) ONE AS INDICATED.
 5. REDUCE ARTWORK TO BE PRINTED ON FACE OF CYLINDER (PX856).
 6. START WITH BAND ONE ON CENTER LINE OF NOTCH IN CYLINDER AS SHOWN.
 7. ALL BANDS START FROM REF DIM .410 FROM EDGE OF CYLINDER.



EDGE OF CYLINDER

REF. - PX856

1	VLRC-1	
QTY / UNIT	MODEL USED ON	ASS'Y NO.
APPLICATION		
	CODE	
NOTICE TO PERSONS RECEIVING THIS DRAWING		
THE TECHNICAL MATERIEL CORPORATION claims proprietary right in the material disclosed hereon. This drawing is issued in confidence for engineering information only and may not be reproduced or used to manufacture anything shown hereon without permission from THE TECHNICAL MATERIEL CORPORATION to the user. This drawing is loaned for mutual assistance and is subject to recall at any time.		

UNLESS OTHERWISE SPECIFIED DIMENSIONS ARE IN INCHES AND INCLUDE CHEMICALLY APPLIED OR PLATED FINISHES

TOLERANCES ON

DECIMALS	FRACTIONS
.X ± .05	± 1/64
.XX ± .01	ANGLES
.XXX ± .005	± 0° -30'

MATERIAL

FINISH

QTY. REQ.	ITEM	PART NO.	DESCRIPTION	SYMBOL
A. MARTINENGO LIST OF MATERIAL				
THE TECHNICAL MATERIEL CORP. MAMARONECK, NEW YORK				
MARKING, DIAL FREQ. CHANNEL				
SIZE	CODE	IDENT. NO.	DWG. NO.	ISSUE
C	82679		LD2227	A
SCALE 2:1				SHEET OF
				1