

5

4

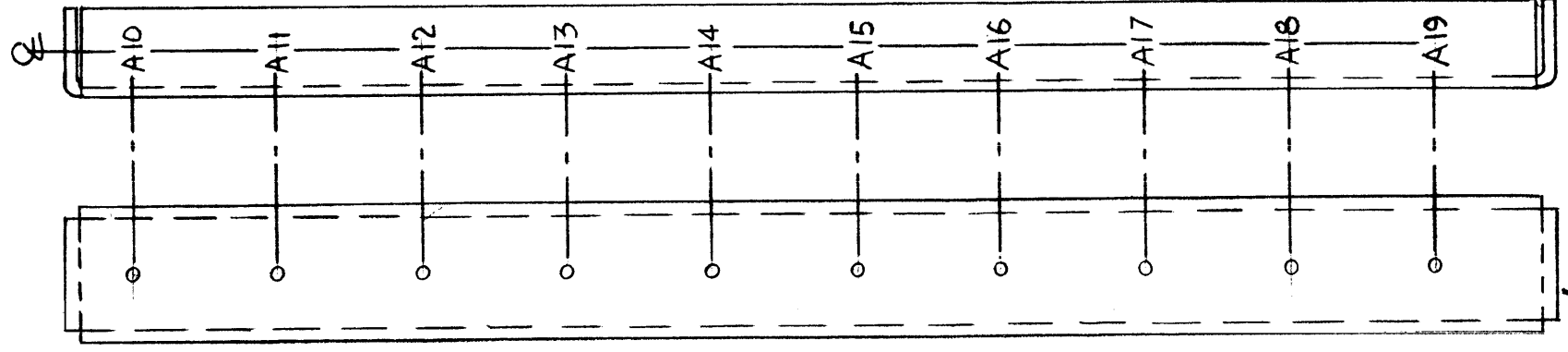
3

2

1

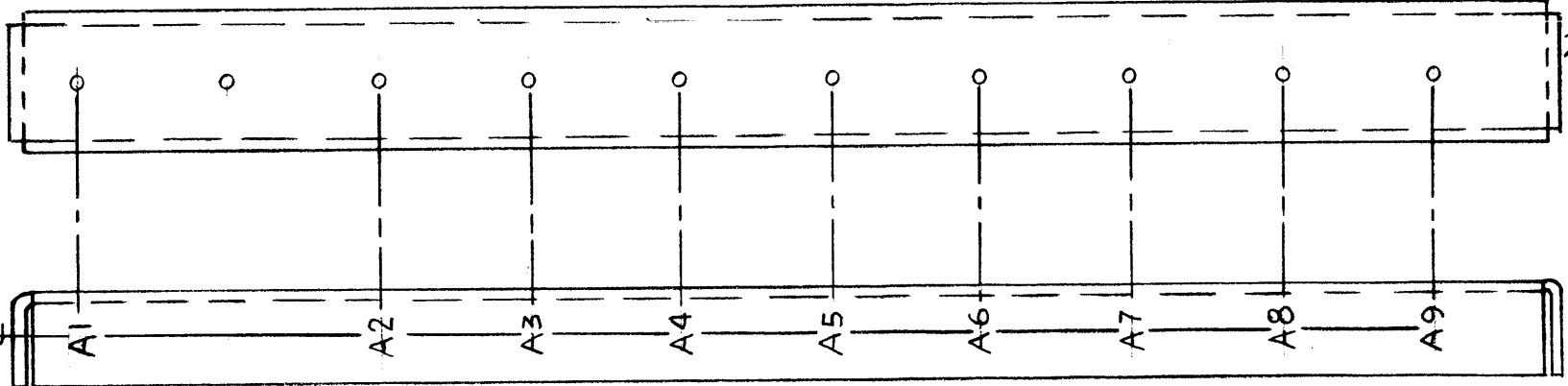
REVISIONS						
ZONE	LTR	DESCRIPTION	DATE	E.M.N.NO	DRAFT	CHKD APPD
	X	EXP. RELEASE	10.31.67		HZ.	<i>[Signature]</i>
	Ø	ORIG. RELEASE	12-4-68			SG <i>[Signature]</i>

LD 2265-2



MARK TMC P/N LD 2265 - -
 1/8 HIGH GOTHIC W/LATEST
 REV. LETTER (ON INSIDE)

MARKING PROCESS: AS PER TMC SPECIFICATION S-727.
LETTERING: 1/8 HIGH BLACK GOTHIC, LOCATED AS SHOWN.



LD 2265-1

REF: MS 5234

IEA	RT1H-3	
QTY / UNIT	MODEL USED ON	ASS'Y NO.
APPLICATION		
	CODE	S401-451
	A	

NOTICE TO PERSONS RECEIVING THIS DRAWING
 THE TECHNICAL MATERIEL CORPORATION claims proprietary right in the material disclosed hereon. This drawing is issued in confidence for engineering information only and may not be reproduced or used to manufacture anything shown hereon without permission from THE TECHNICAL MATERIEL CORPORATION to the user. This drawing is loaned for mutual assistance and is subject to recall at any time.

UNLESS OTHERWISE SPECIFIED DIMENSIONS ARE IN INCHES AND INCLUDE CHEMICALLY APPLIED OR PLATED FINISHES	
DECIMALS .X ± .05 .XX ± .01 .XXX ± .005	FRACTIONS 1/64 ANGLES 0° -30'
MATERIAL	
FINISH	

REQ'D	ITEM	PART NUMBER	DESCRIPTION	SYM.
	F. EATON		LIST OF MATERIAL	
FINAL APPROVAL <i>[Signature]</i>		DATE 12/3/68	THE TECHNICAL MATERIEL CORP. MAMARONECK, NEW YORK	
MECH. DES.		DATE	MARKING, SUPPORT CHANNEL	
ELECT. DES.		DATE		
CHECKED SG		DATE 10/31/67		
DRAWN HZ.		DATE 10.31.67	SIZE B	CODE IDENT. NO. 82679
			DWG NO. LD 2265	ISSUE Ø
SCALE 1:1		SHEET 1 OF 1		

5

4

3

2

1