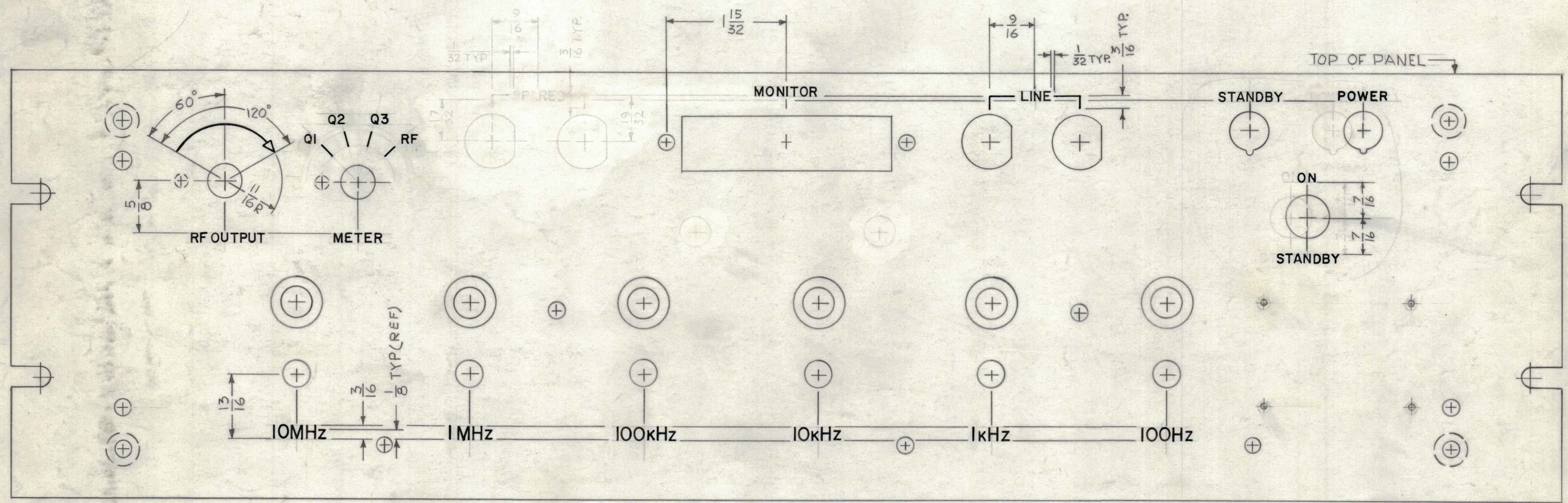
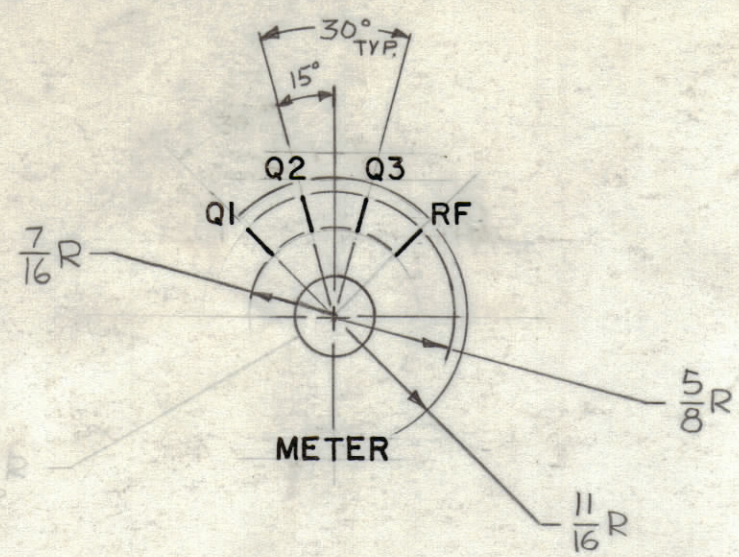
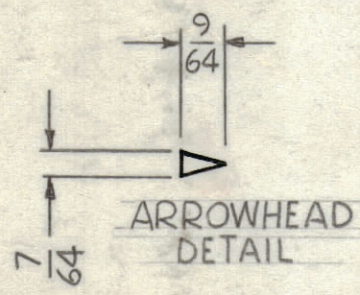


REVISIONS						
ZONE	LTR	DESCRIPTION	DATE	E.M.N.NO	DRAFT	CHKD APPD
	X	EXP. RELEASE	11-8-67		HY.	
	Ø	ORIGINAL RELEASE FOR PROD.	11-15-67	Ø	R.G.	
	A	DELE. SPARES & PICT REV.	12-11-67	18663	HY.	



FRONT OF PANEL SHOWN



HEIGHT OF LETTER	DEPTH OF STROKE	WIDTH OF STROKE
1/8	.010	.020
3/16	.010	.025
LINES	.010	.015
ARROWHEADS	.010	SEE DETAIL

- UNLESS OTHERWISE SPECIFIED:
1. ENGRAVING TO BE 1/8 HIGH GOTHIC, WHITE FILLED
 2. ALL LINES TO BE WHITE FILLED.
 3. ALL ARROWHEADS TO BE WHITE OUTLINE FILL.
 4. ALL LETTER GROUPS TO BE CENTERED ON HOLES, CUTOUTS OR INDICATING LINES.
 5. ALL ENGRAVING AS PER TMC SPEC S566.

1	CHG-41	
QTY / UNIT	MODEL USED ON	ASS'Y NO.
APPLICATION		
	CODE	S 401-451

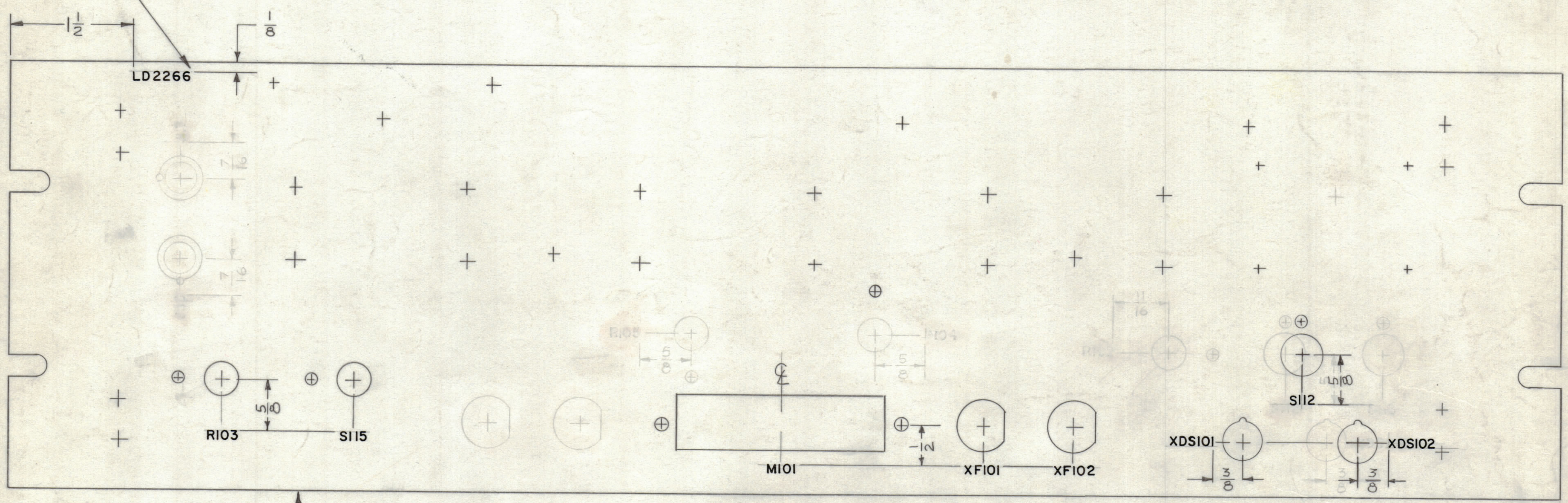
NOTICE TO PERSONS RECEIVING THIS DRAWING
 THE TECHNICAL MATERIEL CORPORATION claims proprietary right in the material disclosed hereon. This drawing is issued in confidence for engineering information only and may not be reproduced or used to manufacture anything shown hereon without permission from THE TECHNICAL MATERIEL CORPORATION to the user. This drawing is loaned for mutual assistance and is subject to recall at any time.

REF: MS 5260

QTY. REQ.	ITEM	PART NO.	DESCRIPTION	SYMBOL
0	POSE		LIST OF MATERIAL	
FINAL APPROVAL: <i>[Signature]</i> DATE: 11-10-67 MECH. DES.: <i>[Signature]</i> DATE: 11-10-67 ELECT. DES.: <i>[Signature]</i> DATE: 11-10-67 CHECKED: <i>[Signature]</i> DATE: 11-10-67 DRAWN: <i>[Signature]</i> DATE: 11-8-67				
			THE TECHNICAL MATERIEL CORP. MAMARONECK, NEW YORK	
			MARKING, FRONT PANEL	
MATERIAL		MIL-OKLEN	SIZE	ISSUE
FINISH			CODE IDENT. NO.	
			DWG NO.	
			82679	
			LD2266	
			SCALE 1:1	SHEET 1 OF 2

REVISIONS						
ZONE	LTR	DESCRIPTION	DATE	E.M.N.NO	DRAFT	CHKD APPD
	X	EXP. RELEASE	11-8-67		HE	HE
	Ø	ORIGINAL RELEASE FOR PROD.	11-15-67	Ø	RG	HE
	A	DELE. R104, 105, PICT REV.	12-11-67	18663	HE	HE

MARK TMC P/N 1/8 HIGH
GOTHIC W/LATEST REV.
LETTER.



TOP OF PANEL

REAR VIEW OF PANEL SHOWN

MARKING PROCESS: AS PER TMC SPECIFICATION S-727.
LETTERING: 1/8 HIGH BLACK GOTHIC, LOCATED AS SHOWN.

REF: MS 5260

1	CHG-41	
QTY / UNIT	MODEL USED ON	ASS'Y NO.
APPLICATION		
CODE	S401-451	
A		

NOTICE TO PERSONS RECEIVING THIS DRAWING
THE TECHNICAL MATERIEL CORPORATION claims proprietary right in the material disclosed hereon. This drawing is issued in confidence for engineering information only and may not be reproduced or used to manufacture anything shown hereon without permission from THE TECHNICAL MATERIEL CORPORATION to the user. This drawing is loaned for mutual assistance and is subject to recall at any time.

UNLESS OTHERWISE SPECIFIED
DIMENSIONS ARE IN INCHES
AND INCLUDE CHEMICALLY APPLIED
OR PLATED FINISHES

TOLERANCES ON

DECIMALS	FRACTIONS
.X ± .05	± 1/64
.XX ± .01	ANGLES
.XXX ± .005	± 0° -30'

QTY. REQ.	ITEM	PART NO.	DESCRIPTION	SYMBOL
O. POSE LIST OF MATERIAL				
FINAL APPROVAL <i>[Signature]</i> DATE 11/15/67				
MECH. DES. <i>[Signature]</i> DATE 11-10-67				
ELECT. DES. <i>[Signature]</i> DATE				
CHECKED <i>[Signature]</i> DATE 11-15-67				
DRAWN <i>[Signature]</i> DATE 11-8-67				
MATERIAL <i>[Signature]</i> 11/15/67				
FINISH				
SIZE	CODE IDENT. NO.	DWG NO.	ISSUE	
C	82679	LD 2266	A	
SCALE 1:1			SHEET 2 OF 2	

MARKING-PANEL, FRONT

LD 2266 A B