

4

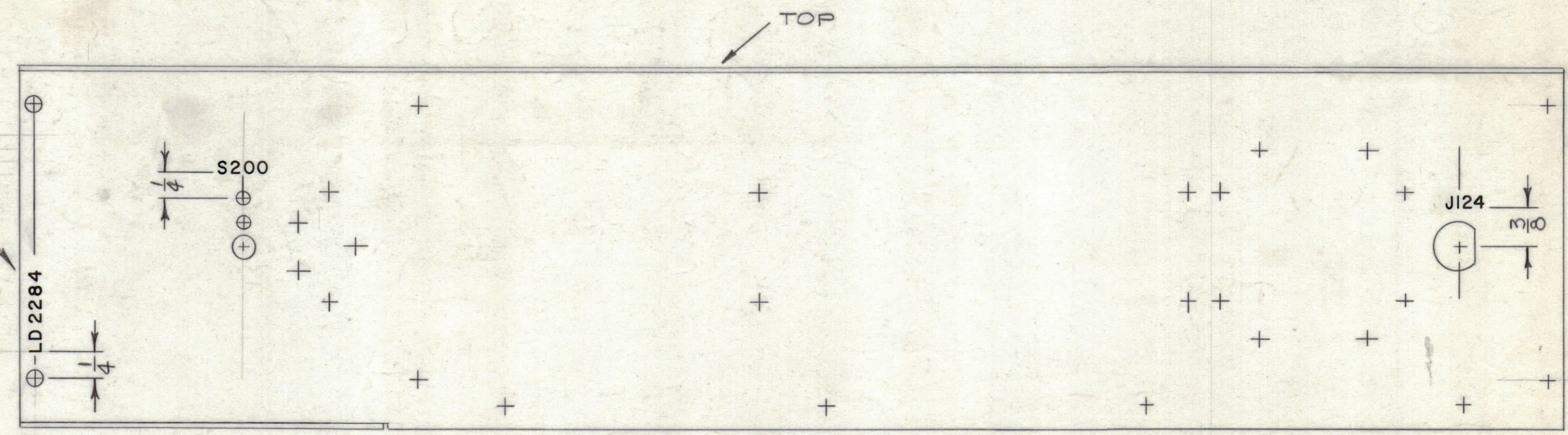
3

2

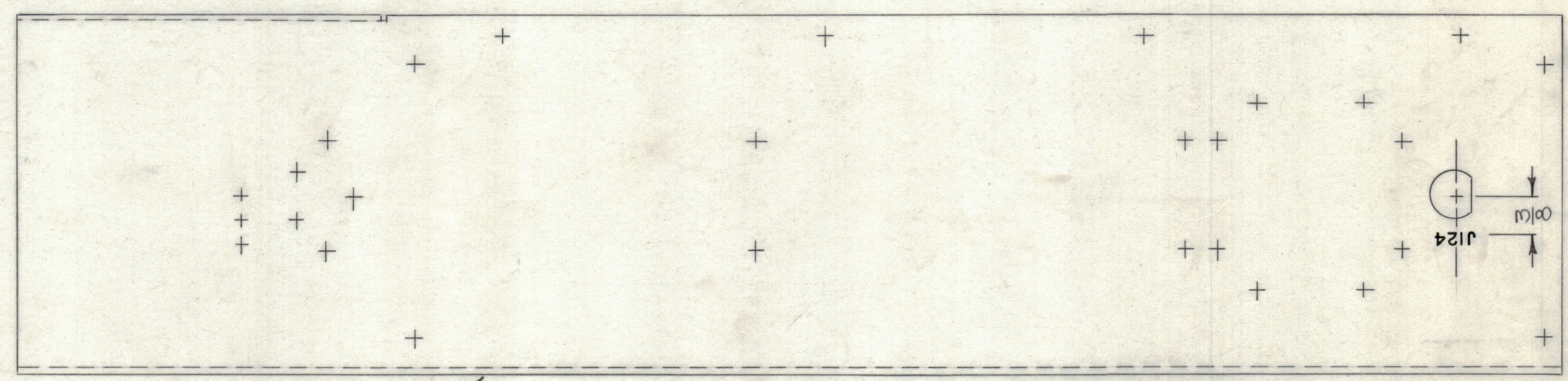
1

REVISIONS						
ZONE	LTR	DESCRIPTION	DATE	E.M.N.NO	DRAFT	CHKD APPD
	X	EXPERIMENTAL RELEASE	1-10-68			
	Ø	ORIGINAL RELEASE FOR PRODUCTION	4-1-68			

MARK TMC P/N  
 1/8" HIGH GOTHIC  
 W/LATEST REV. LETTER



INSIDE VIEW



OUTSIDE VIEW

MARKING PROCESS: AS PER TMC SPECIFICATION S-727.  
 LETTERING: 1/8 HIGH BLACK GOTHIC, LOCATED AS SHOWN.

BCT-10KA		
QTY / UNIT	MODEL USED ON	ASS'Y NO.
APPLICATION		
CODE	S401-451	
A		

**NOTICE TO PERSONS RECEIVING THIS DRAWING**  
 THE TECHNICAL MATERIEL CORPORATION claims proprietary right in the material disclosed herein. This drawing is issued in confidence for engineering information only and may not be reproduced or used to manufacture anything shown herein without permission from THE TECHNICAL MATERIEL CORPORATION to the user. This drawing is loaned for mutual assistance and is subject to recall at any time.

REF. MS 5173

QTY. REQ.	ITEM	PART NO.	DESCRIPTION	SYMBOL
F. BUDETTI LIST OF MATERIAL				
FINAL APPROVAL		DATE	THE TECHNICAL MATERIEL CORP.	
MECH. DES.		DATE	MAMARONECK, NEW YORK	
ELECT. DES.		DATE	MARKING, REAR PLATE	
CHECKED		DATE	(LFE) DRAWER	
DRAWN		DATE	SIZE CODE IDENT. NO. DWG NO. ISSUE	
			C 82679 LD 2284 Ø	
SCALE			SHEET OF	

4

3

2

1