

APPLICATION

QTY 1
MODEL USED ON PSP-350C

ASS'Y NO.

LTR X
Ø

DESCRIPTION
EXPERIMENTAL RELEASE
ORIGINAL RELEASE FOR PRODUCTION

DATE
2.17.67
2-21-67

E.M.N.NO
--

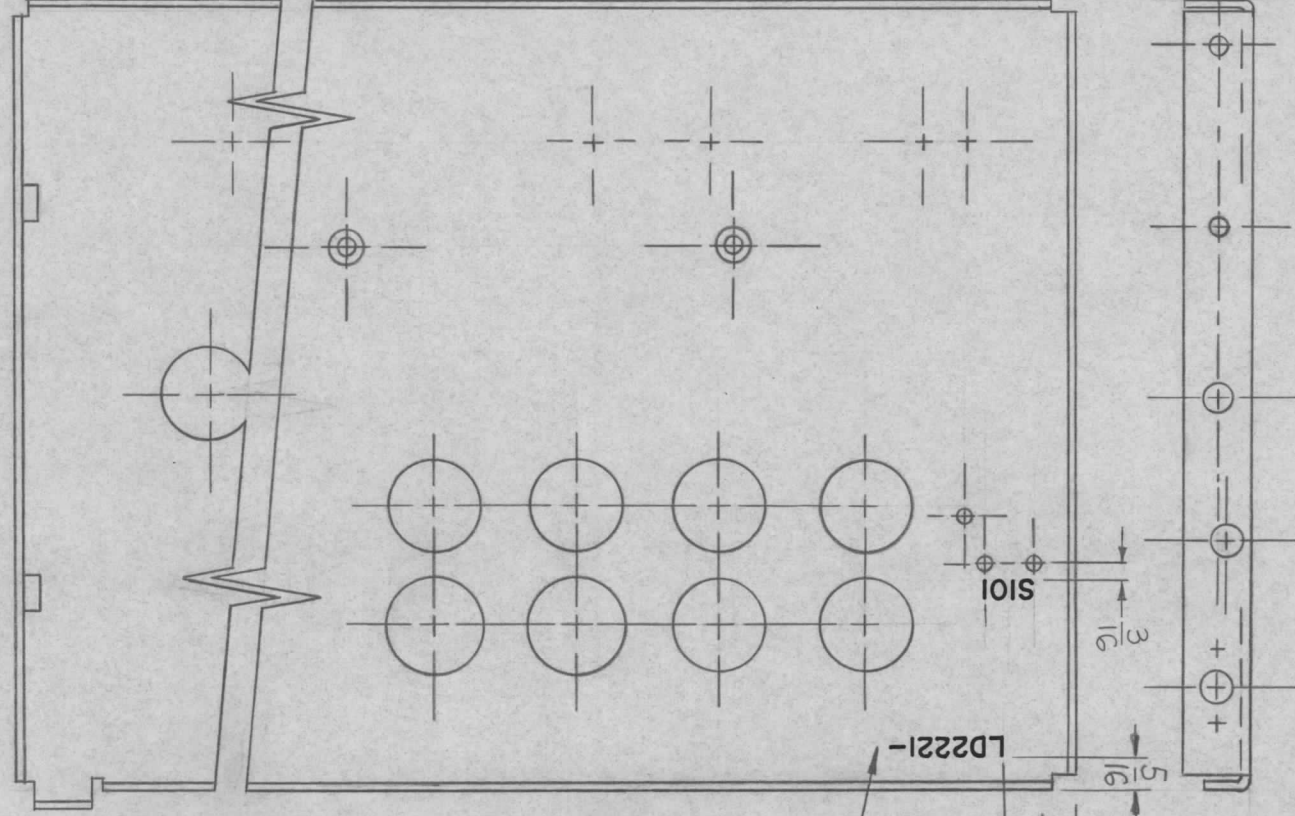
DRAFT
L.H.B.
L.P.K.

CHKD

APPD

REVISIONS

MARK TMC PART/No.
of HIGH GOTHIC W/LATEST REVISION LETTER
REAR VIEW SHOWN



UNLESS OTHERWISE SPECIFIED
1 - MARKING PROCESS: AS PER TMC SPECIFICATION S727
2 - LETTERING: 1/8 HIGH BLACK GOTHIC,
LOCATED AS SHOWN

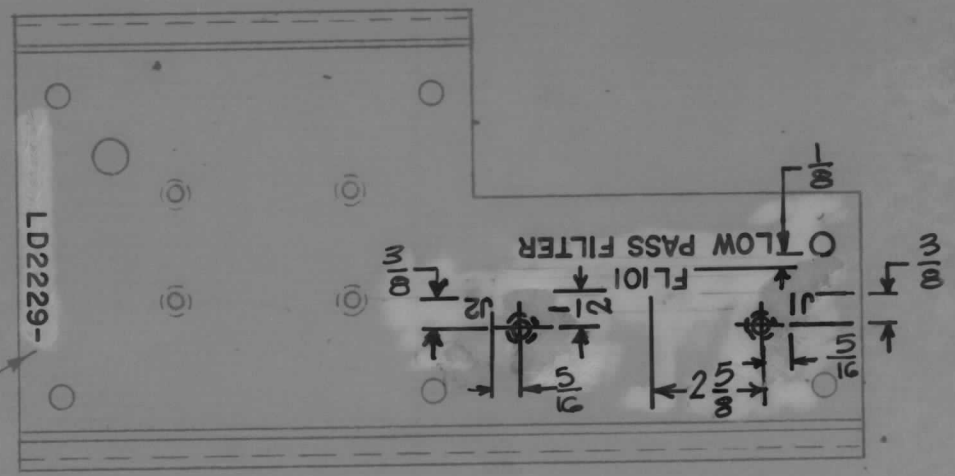
REF: MS5073

REQ'D ITEM	PART NUMBER	DESCRIPTION	SYM.
L. BUTLER		LIST OF MATERIAL	
FINAL APPROV. <i>[Signature]</i>	DATE	THE TECHNICAL MATERIEL CORP.	
MECH. DES. <i>[Signature]</i>	DATE	MAMARONECK, NEW YORK	
ELECT. DES. <i>[Signature]</i>	DATE	MARKING-PLATE, RT SIDE	
CHECKED <i>[Signature]</i>	DATE		
DRAWN <i>[Signature]</i>	DATE 2.17.67		
MATERIAL A			
FINISH 4			

SIZE A	CODE IDENT. NO. 82679	DWG NO. LD2221	ISSUE Ø
SCALE 1:2	SHEET 1 OF 1		

NOTICE TO PERSONS RECEIVING THIS DRAWING
THE TECHNICAL MATERIEL CORPORATION claims proprietary right in the material disclosed hereon. This drawing is issued in confidence for engineering information only and may not be reproduced or used to manufacture anything shown hereon without permission from THE TECHNICAL MATERIEL CORPORATION to the user. This drawing is loaned for mutual assistance and is subject to recall at any time.

REQ. PER UNIT	USED ON			LD2229 ϕ
	MODEL	ASS'Y. NO.	DATE	
1	VLRC-1		7-13-67	



MARK TMC P/N
1/8 HIGH BLACK
GOTHIC W/LATEST
REV. LETTER

MARKING PROCESS: AS PER TMC SPECIFICATION S-727.
LETTERING: 1/8 HIGH BLACK GOTHIC, LOCATED AS SHOWN.

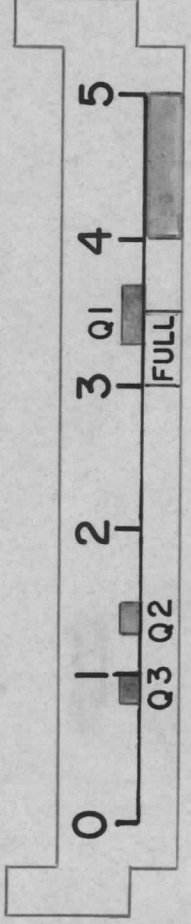
REF: MS 5125

REQ. ITEM	PART NO.	A. MARTINENGO DESCRIPTION				SYMBOL
		THE TECHNICAL MATERIEL CORP. MAMARONECK, NEW YORK				
		MARKING PLATE, REAR				
ϕ ORIG. RELEASE	8/4/67	ϕ		JAD		
X EXPER. RELEASE	7-13-67	-	HLC			
SYM	DESCRIPTION	DATE	CH. NO.	DRAFTS	CHECKER	ENG. APP.
UNLESS OTHERWISE SPECIFIED DIMENSIONS ARE IN INCHES AND INCLUDE CHEMICALLY APPLIED OR PLATED FINISHES		SCALE	NONE			
DECIMALS .X \pm .05 .XX \pm .01 .XXX \pm .005	TOLERANCES	FRACTIONS \pm 1/64 ANGLES \pm 0° 30'	CODE A	S401-451		
				TYPE & TEMPER	HEAT TREAT. SPEC.	FINISH & SPEC. NO.
				DRAWN	CHECKED	FINAL APPROVAL
						LD2229 ϕ

M/L W/L

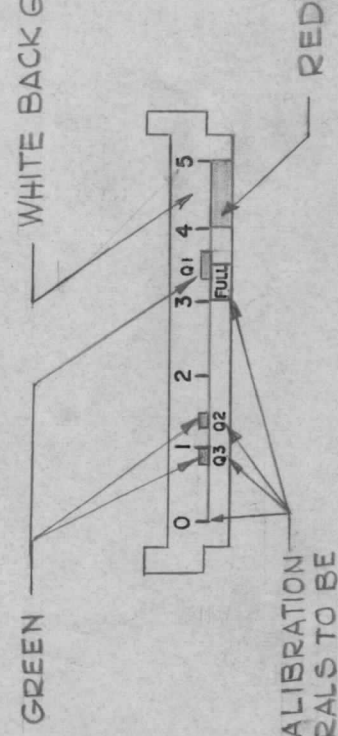
APPLICATION			REVISIONS						
QTY	MODEL USED ON	ASSY NO.	LTR	DESCRIPTION	DATE	E.M.N.NO	DRAFT	CHKD	APPD
1	MMX-()	BMA100	Ø	ORIGINAL RELEASE FOR PRODUCTION	7-31-67		G.D.L		

LD 2231
(REF. 1015)



SCALE = 2:1

NOTE: REDUCE ARTWORK TO 2:1 AS SHOWN BELOW



MARK TMC P/No 1/8
HIGH BLK GOTHIC
W/LATEST REV. LETTER
ON REAR OF DIAL.

LETTERING, CALIBRATION MARKS & NUMERALS TO BE IN BLACK.

FULL SCALE
FRONT VIEW SHOWN

REF: MR191-9

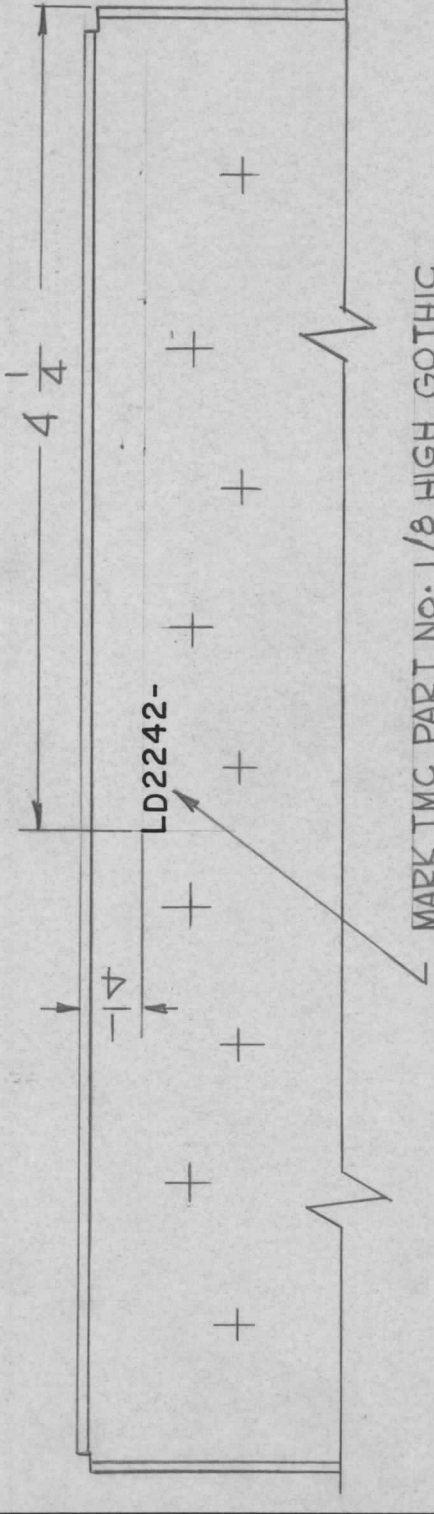
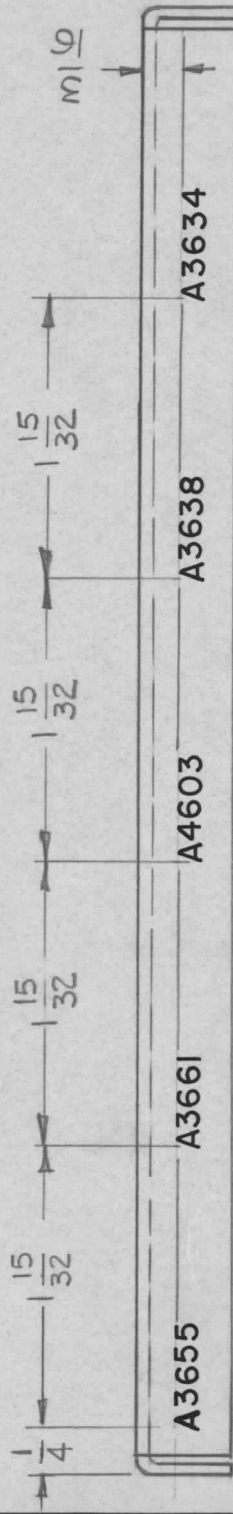
UNLESS OTHERWISE SPECIFIED DIMENSIONS ARE IN INCHES AND INCLUDE CHEMICALLY APPLIED OR PLATED FINISHES	REQ'D ITEM	PART NUMBER	Q. POSE	DESCRIPTION	SYM.
DECIMALS X ± .05 .XX ± .01 .XXX ± .005	FINAL APPROVAL			LIST OF MATERIAL	
FRACTIONS 1/64	MECH. DES.			THE TECHNICAL MATERIEL CORP. MAMARONECK, NEW YORK	
TOLS. ANGLES 0°-30°	ELECT. DES.			MARKING, DIAL	
MATERIAL	CHECKED				
FINISH	DRAWN	G.D.L			
NOTICE TO PERSONS RECEIVING THIS DRAWING		SIZE	CODE IDENT. NO.	DWG NO.	ISSUE
THE TECHNICAL MATERIEL CORPORATION claims proprietary right in the material disclosed hereon. This drawing is issued in confidence for engineering information only and may not be reproduced or used to manufacture anything shown hereon without permission from THE TECHNICAL MATERIEL CORPORATION to the user. This drawing is loaned for mutual assistance and is subject to recall at any time.		A	82679	LD2231	Ø
		SCALE	AS NOTED	SHEET	OF

APPLICATION

QTY	MODEL USED ON	ASS'Y NO.	LTR
1	VLRC-1	A4607	X

DESCRIPTION	DATE	E.M.N.NO	DRAFT	CHKD	APPD
EXP. RELEASE	9-5-67		G.D.L		
ORIG. REL. FOR PROD.	9-13-67	Ø	R.G.		

REVISIONS



MARK TMC PART NO. 1/8 HIGH GOTHIC W/LATEST REVISION LETTER.

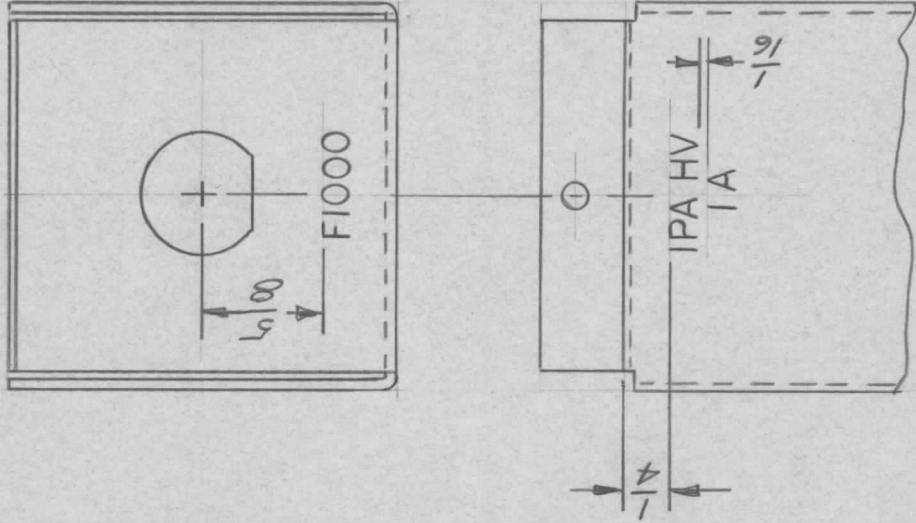
MARKING PROCESS: AS PER TMC SPECIFICATION S-727.
 LETTERING: 1/8 HIGH BLACK GOTHIC, LOCATED AS SHOWN.

REF: MS3966 REF: MS3966

UNLESS OTHERWISE SPECIFIED DIMENSIONS ARE IN INCHES AND INCLUDE CHEMICALLY APPLIED OR PLATED FINISHES		REQ'D ITEM	PART NUMBER	DESCRIPTION	SYM.
DECIMALS		MARTINENGO TMC LIST OF MATERIAL			
X ± .05		THE TECHNICAL MATERIEL CORP.			
.XX ± .01		MAMARONECK, NEW YORK			
.XXX ± .005		MARKING, BRACE FRONT			
TOLS.		MATERIAL			
1/64		FINISH			
ANGLES		NOTICE TO PERSONS RECEIVING THIS DRAWING			
0°-30°		THE TECHNICAL MATERIEL CORPORATION claims proprietary right in the material disclosed hereon. This drawing is issued in confidence for engineering information only and may not be reproduced or used to manufacture anything shown hereon without permission from THE TECHNICAL MATERIEL CORPORATION to the user. This drawing is loaned for mutual assistance and is subject to recall at any time.			
MATERIAL		SIZE			
FINISH		CODE IDENT. NO.			
MATERIAL		A 82679			
FINISH		DWG NO.			
MATERIAL		LD2242			
FINISH		ISSUE			
MATERIAL		Ø			

DATE	DATE	DATE	DATE	DATE
9-11-67	9-11-67	9-11-67	9-11-67	9-11-67
Mech. Des.	Elect. Des.	Checked	Drawn	
		G.D.L	G.D.L	
SCALE		SHEET		OF
1:1		M/L		

APPLICATION			REVISIONS						
QTY	MODEL USED ON	ASS'Y NO.	LTR	DESCRIPTION	DATE	E.M.N.NO	DRAFT	CHKD	APPD
1	GPT10KLF		X	EXP. RELEASE	9-26-67		B.M.		
			Ø	ORIGINAL RELEASE	7/15/69		CW		



MARKING PROCESS: AS PER TMC SPECIFICATION S-727.
LETTERING: 1/8 HIGH BLACK GOTHIC, LOCATED AS SHOWN.

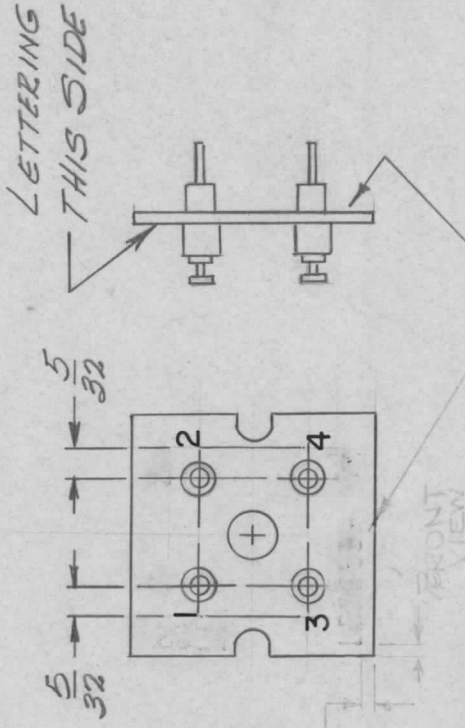
REF: MS4900

UNLESS OTHERWISE SPECIFIED DIMENSIONS ARE IN INCHES AND INCLUDE CHEMICALLY APPLIED OR PLATED FINISHES	REQ'D ITEM	PART NUMBER	DESCRIPTION	SYM.
DECIMALS .X ± .05 .XX ± .01 .XXX ± .005	BUDETTI		LIST OF MATERIAL	
FRACTIONS 1/64	FINAL APPROVAL <i>[Signature]</i>		THE TECHNICAL MATERIEL CORP. MAMARONECK, NEW YORK	
TOLS. ANGLES 0°-30'	MECH. DES. B.N.	DATE 7/15/69	MARKING, BOX, MTG FUSE	
MATERIAL	ELECT. DES.	DATE		
FINISH	CHECKED	DATE		
S401-451	DRAWN B.M.	DATE 26 SEP 67		

SIZE	CODE IDENT. NO.	DWG NO.	ISSUE
A	82679	LD2252	Ø

NOTICE TO PERSONS RECEIVING THIS DRAWING
THE TECHNICAL MATERIEL CORPORATION claims proprietary right in the material disclosed hereon. This drawing is issued in confidence for engineering information only and may not be reproduced or used to manufacture anything shown hereon without permission from **THE TECHNICAL MATERIEL CORPORATION** to the user. This drawing is loaned for mutual assistance and is subject to recall at any time.

APPLICATION			REVISIONS						
QTY	MODEL USED ON	ASSY NO.	LTR	DESCRIPTION	DATE	E.M.N.NO	DRAFT	CHKD	APPD
12	VLRC-1	A4644	X	EXP. RELEASE	10-3-67	-	AKQ		
			Ø	ORIG. RELEASE FOR PROD.	10-12-67	Ø	R.G.		



MARK TMC PT. No. (LD2255-) W/LATEST
REV. LETTER (ON REAR)

MARKING PROCESS: AS PER TMC SPECIFICATION S-727.
LETTERING: 1/8 HIGH BLACK GOTHIC, LOCATED AS SHOWN.

REF: M35204

REQ'D ITEM	PART NUMBER	DESCRIPTION	SYM.
LIST OF MATERIAL			
THE TECHNICAL MATERIEL CORP. MAMARONECK, NEW YORK			
MARKING, PLATE, COVER			
SIZE	CODE IDENT. NO.	DWG NO.	ISSUE
A	82679	LD2255	Ø
SCALE	1:1	SHEET	OF

FINAL APPROVAL	DATE
MARTINENGO	
MECH. DES.	10-10-67
ELECT. DES.	
CHECKED	10-10-67
DRAWN	10-3-67

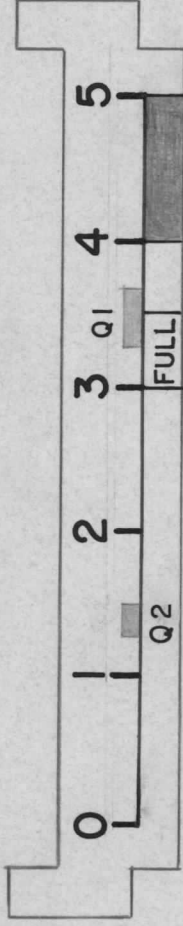
UNLESS OTHERWISE SPECIFIED DIMENSIONS ARE IN INCHES AND INCLUDE CHEMICALLY APPLIED OR PLATED FINISHES
DECIMALS 1/64
.X ± .05 TOLS.
.XX ± .01 ANGLES
.XXX ± .005 0°-30°
MATERIAL 4
FINISH 4
S401-451

NOTICE TO PERSONS RECEIVING THIS DRAWING: THE TECHNICAL MATERIEL CORPORATION claims proprietary right in the material disclosed hereon. This drawing is issued in confidence for engineering information only and may not be reproduced or used to manufacture anything shown hereon without permission from THE TECHNICAL MATERIEL CORPORATION to the user. This drawing is loaned for mutual assistance and is subject to recall at any time.

APPLICATION

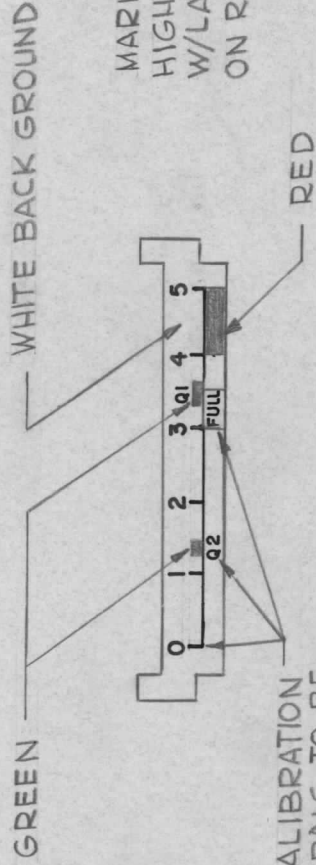
REVISIONS

QTY	MODEL USED ON	ASS'Y NO.	LTR	DESCRIPTION	DATE	E.M.N.NO	DRAFT	CHKD	APPD
1	LFE-1	BMA116	Ø	ORIGINAL RELEASE FOR PRODUCTION	10-13-67	Ø	G.D.L	<i>[Signature]</i>	<i>[Signature]</i>



SCALE = 2:1

NOTE: REDUCE ARTWORK TO 1:1 AS SHOWN BELOW



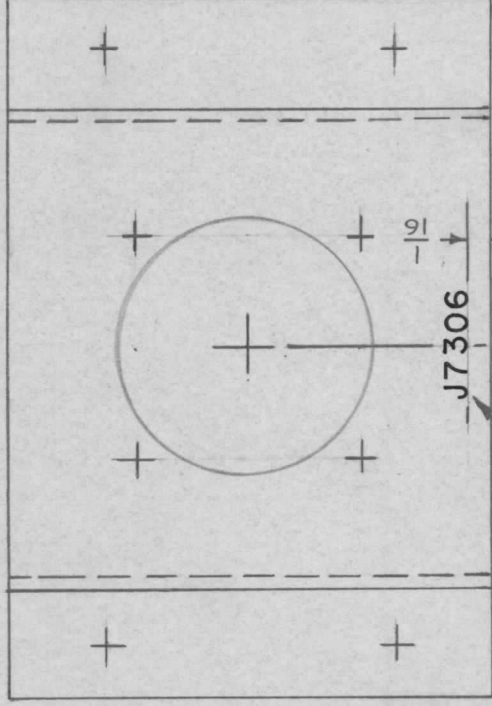
ALL LETTERING, CALIBRATION MARKS & NUMERALS TO BE IN BLACK

FULL SCALE FRONT VIEW SHOWN

REF: MR191-10

UNLESS OTHERWISE SPECIFIED DIMENSIONS ARE IN INCHES AND INCLUDE CHEMICALLY APPLIED OR PLATED FINISHES	REQ'D ITEM	PART NUMBER	DESCRIPTION	SYM.
DECIMALS .X ± .05 .XX ± .01 .XXX ± .005 FRACTIONS 1/64 TOLS. ANGLES 0° - 30°	0. POSE		LIST OF MATERIAL	
MATERIAL	FINAL APPROVAL	DATE	THE TECHNICAL MATERIEL CORP.	
	MECH. DES.	DATE	MAMARONECK, NEW YORK	
FINISH	ELECT. DES.	DATE	MARKING, DIAL	
	CHECKED	DATE		
	DRAWN	DATE		
NOTICE TO PERSONS RECEIVING THIS DRAWING THE TECHNICAL MATERIEL CORPORATION claims proprietary right in the material disclosed hereon. This drawing is issued in confidence for engineering information only and may not be reproduced or used to manufacture anything shown hereon without permission from THE TECHNICAL MATERIEL CORPORATION to the user. This drawing is loaned for mutual assistance and is subject to recall at any time.			SIZE	ISSUE
			A	Ø
			82679	LD 2258
			CODE IDENT. NO.	DWG NO.
			SCALE	SHEET OF

APPLICATION		REVISIONS							
QTY	MODEL USED ON	ASS'Y NO.	LTR	DESCRIPTION	DATE	E.M.N.NO	DRAFT	CHKD	APPD
1	GPT 40KEL		X	EXP. RELEASE	11-1-67		H.S.		
			Ø	ORIGINAL RELEASE	7/15/69		CV		



SEE CHART FOR APPROPRIATE REF. DESIG. INSERT

TMC PART NO	REF. DESIG. INSERT
LD 2259-1	J 7306
LD 2259-2	J 7305

MARKING PROCESS: AS PER TMC SPECIFICATION S-727.
 LETTERING: 1/8 HIGH BLACK GOTHIC, LOCATED AS SHOWN.

REF. MS 5230

UNLESS OTHERWISE SPECIFIED DIMENSIONS ARE IN INCHES AND INCLUDE CHEMICALLY APPLIED OR PLATED FINISHES	REQ'D ITEM	PART NUMBER	DESCRIPTION	SYM.
DECIMALS X ± .05 .XX ± .01 .XXX ± .005 FRACTIONS 1/64 TOLS. ANGLES 0°-30°	F. BUDETTI		LIST OF MATERIAL	
FINAL APPROVAL	DATE		THE TECHNICAL MATERIEL CORP.	
MECH. DES. <i>BN</i>	DATE	7/15/69	MAMARONECK, NEW YORK	
ELECT. DES.	DATE			
CHECKED	DATE			
DRAWN <i>H.S.</i>	DATE	11-1-67	MARKING, BRACKET, MTG CONN.	
S 401-451				

NOTICE TO PERSONS RECEIVING THIS DRAWING
 THE TECHNICAL MATERIEL CORPORATION claims proprietary right in the material disclosed hereon. This drawing is issued in confidence for engineering information only and may not be reproduced or used to manufacture anything shown hereon without permission from THE TECHNICAL MATERIEL CORPORATION to the user. This drawing is loaned for mutual assistance and is subject to recall at any time.

SIZE	CODE IDENT. NO.	DWG NO.	ISSUE
A	82679	LD 2259	Ø
SCALE	1:1	SHEET	OF

APPLICATION

QTY 1
MODEL USED ON HFRR-4
ASS'Y NO.

LTR X
X1
X2
Ø

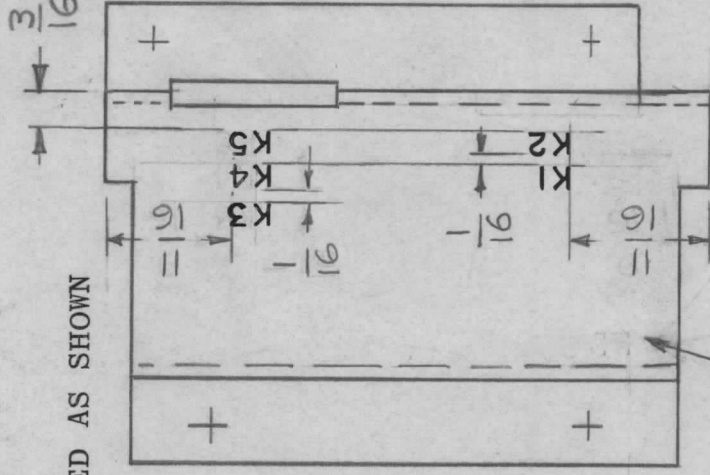
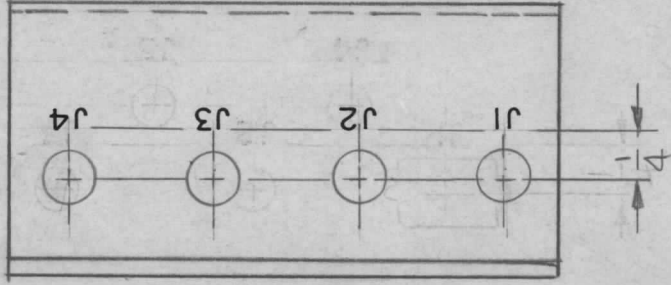
DESCRIPTION
EXP. RELEASE
REVISED MARKING LOC.
J1 THRU 4
DWG NO WAS LD2271
ORIG RELEASE FOR PROD

DATE
9-12-67
10/24/67
2-5-68
11/7/68

E.M.N.NO
CDL
JL
C.V.

CHKD
APPD
R.E.
[Signature]

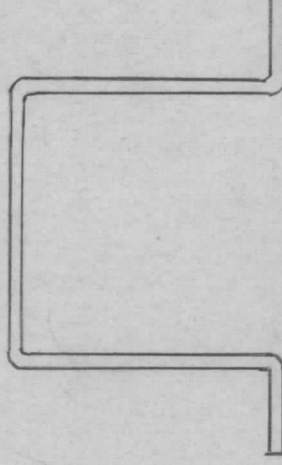
MARKING PROCESS::AS PER TMC SPEC S727
LETTERING: 1/8 HIGH BLACK GOTHIC LOCATED AS SHOWN



OBSOLETE

11-8-68

MARK TMC P/N LD2277
1/8 HIGH GOTHIC W/LATEST
REV. LETTER



REF: MS5281

UNLESS OTHERWISE SPECIFIED
DIMENSIONS ARE IN INCHES
AND INCLUDE CHEMICALLY APPLIED
OR PLATED FINISHES

DECIMALS
.X ± .05
.XX ± .01
.XXX ± .005

FRACTIONS
1/64
TOLS.
ANGLES
0°-30°

MATERIAL

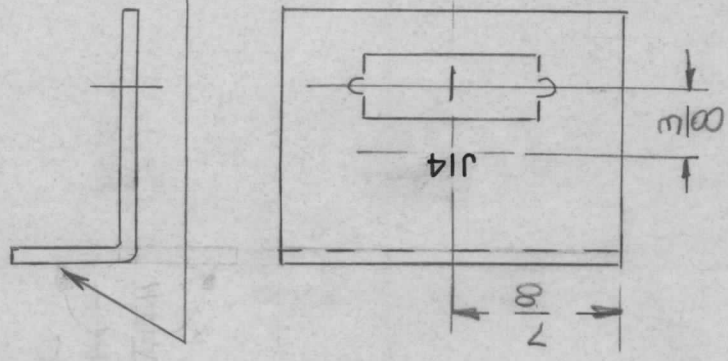
FINISH

SA01-451

REQ'D ITEM	PART NUMBER	DESCRIPTION	SYM.
HOGAN (ZETENA)		LIST OF MATERIAL SK 3252-003-14	
FINAL APPROVAL	DATE	THE TECHNICAL MATERIEL CORP. MAMARONECK, NEW YORK	
MECH. DES.	DATE	MARKING, CHASSIS, INPUT ATTENUATOR	
ELECT. DES.	DATE		
CHECKED	DATE		
DRAWN	DATE		
DRAWN G.D.L		SIZE	ISSUE
		CODE IDENT. NO. LD2277	Ø
		SCALE 1:1	SHEET OF

NOTICE TO PERSONS RECEIVING THIS DRAWING
THE TECHNICAL MATERIEL CORPORATION claims proprietary right in the material disclosed hereon. This drawing is issued in confidence for engineering information only and may not be reproduced or used to manufacture anything shown hereon without permission from THE TECHNICAL MATERIEL CORPORATION to the user. This drawing is loaned for mutual assistance and is subject to recall at any time.

APPLICATION		REVISIONS							
QTY	MODEL USED ON	ASSY NO.	LTR	DESCRIPTION	DATE	E.M.N.NO	DRAFT	CHKD	APPD
1	HFRB-4		X	EXP. RELEASE	9-12-67		G.D.L	APD	R.E.
			Ø	ORIGINAL RELEASE	11-8-68		HB.		APD



MARK TMC P/N(LD 22278) 1/8 HIGH GOTHIC
W/LATEST REV. LETTER

MARKING PROCESS: AS PER TMC SPECIFICATION S-727.
LETTERING: 1/8 HIGH BLACK GOTHIC, LOCATED AS SHOWN.

REF: MS5303

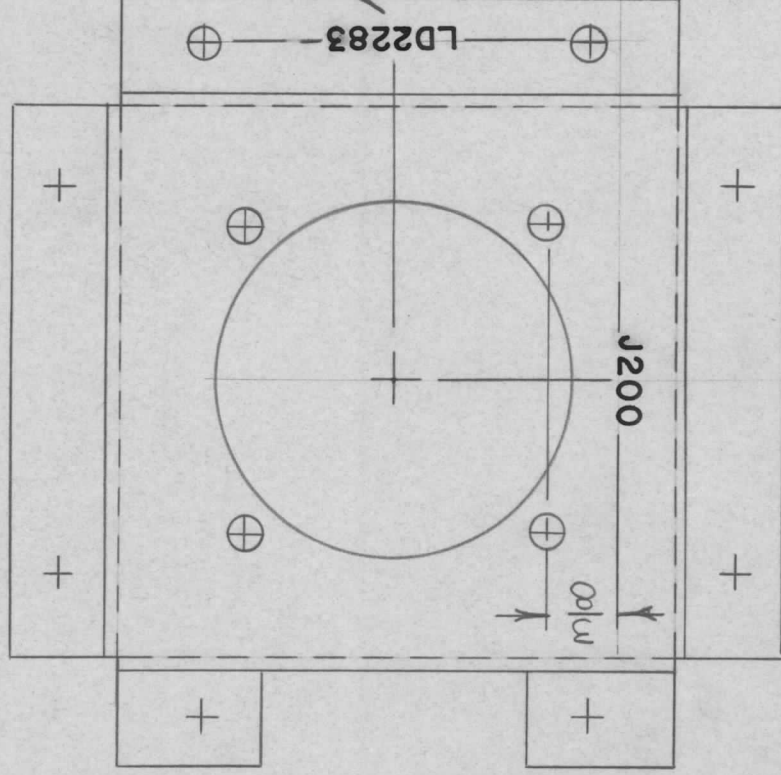
REQ'D	ITEM	PART NUMBER	DESCRIPTION	SYM.
	HOGAN(ZETENA)		LIST OF MATERIAL SK 3252-003-18	
FINAL APPROVAL		DATE 11-8-68		
MECH. DES.		DATE 9/12/67	THE TECHNICAL MATERIEL CORP.	
ELECT. DES.		DATE 11-8-68	MAMARONECK, NEW YORK	
CHECKED		DATE 9/12/67	MARKING BRACKET MTG. CONN.	
DRAWN	G.D.L	DATE 9-12-67		

SIZE	CODE IDENT. NO.	DWG NO.	ISSUE
A	82679	LD22278	Ø
SCALE	1:1	SHEET	OF

NOTICE TO PERSONS RECEIVING THIS DRAWING
THE TECHNICAL MATERIEL CORPORATION claims proprietary right in the material disclosed hereon. This drawing is issued in confidence for engineering information only and may not be reproduced or used to manufacture anything shown hereon without permission from THE TECHNICAL MATERIEL CORPORATION to the user. This drawing is loaned for mutual assistance and is subject to recall at any time.

APPLICATION		REVISIONS							
QTY	MODEL USED ON	ASS'Y NO.	LTR	DESCRIPTION	DATE	E.M.N.NO	DRAFT	CHKD	APPD
1	BCT-10KA		X	EXP. RELEASE	1-2-68		<i>[Signature]</i>		
			Ø	ORIGINAL RELEASE FOR PRODUCTION	4-1-68	Ø	<i>[Signature]</i>		<i>[Signature]</i>

MARK TMC P/N
 1/8" HIGH GOTHIC
 W/LATEST REV. LETTER



MARKING PROCESS: AS PER TMC SPECIFICATION S-727.

LETTERING: 1/8 HIGH BLACK GOTHIC, LOCATED AS SHOWN.

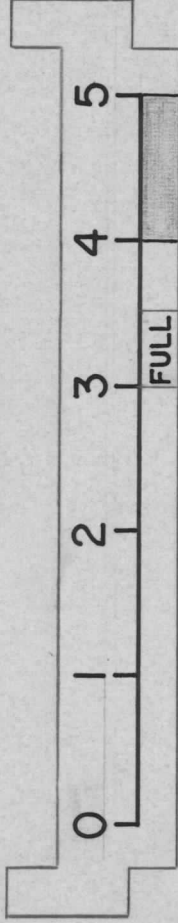
REF. MS 515G

REQ'D ITEM	PART NUMBER	DESCRIPTION	SYM.
F. BUDETTI			
LIST OF MATERIAL			
FINAL APPROVAL	DATE	THE TECHNICAL MATERIEL CORP.	
<i>[Signature]</i>	4-1-68	MAMARONECK, NEW YORK	
MECH. DES.	DATE	MARKING, BRACKET,	
<i>[Signature]</i>	4-1-68	MTG. CONNECTOR	
ELECT. DES.	DATE	SIZE	CODE IDENT. NO.
<i>[Signature]</i>	4-1-68	A	82679
CHECKED	DATE	DWG NO.	ISSUE
<i>[Signature]</i>	4-1-68	LD 2283	Ø.
DRAWN	DATE	SCALE	SHEET
<i>[Signature]</i>	1-2-68	1:1	OF

NOTICE TO PERSONS RECEIVING THIS DRAWING
 THE TECHNICAL MATERIEL CORPORATION claims proprietary right in the material disclosed hereon. This drawing is issued in confidence for engineering information only and may not be reproduced or used to manufacture anything shown hereon without permission from THE TECHNICAL MATERIEL CORPORATION to the user. This drawing is loaned for mutual assistance and is subject to recall at any time.

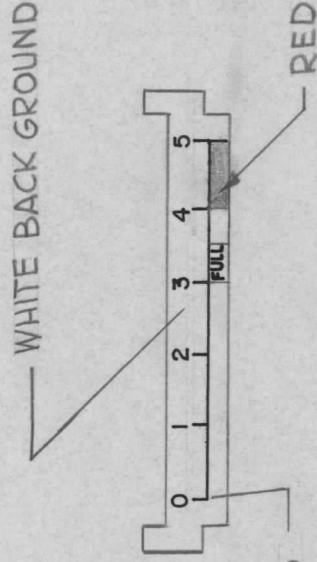
APPLICATION REVISIONS

QTY	MODEL USED ON	ASS'Y NO.	LTR	DESCRIPTION	DATE	E.M.N.NO	DRAFT	CHKD	APPD
1	SME-6	BMA	Ø	ORIGINAL RELEASE FOR PRODUCTION	1-26-68	Ø	GDL		<i>AMB</i>



SCALE = 2:1

NOTE: REDUCE ARTWORK TO 1:1 AS SHOWN BELOW



CALIBRATION, MARKS & NUMERALS TO BE IN BLACK

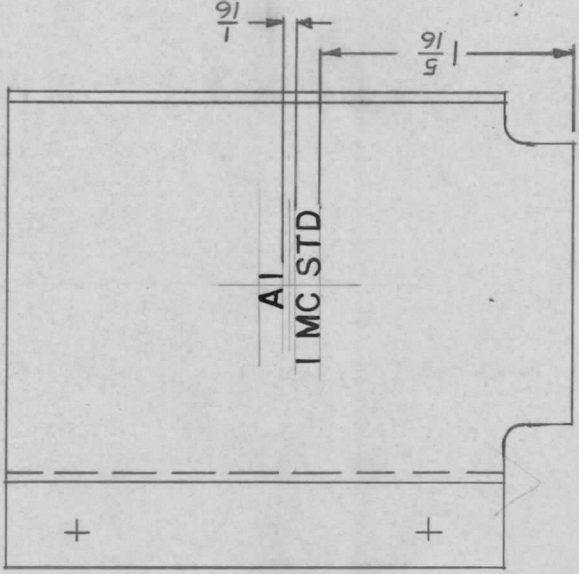
MARK TMC P/No 1/8
HIGH BLK GOTHIC
W/LATEST REV. LETTER
ON REAR OF DIAL.

FULL SCALE
FRONT VIEW SHOWN

REF: MR191-11

UNLESS OTHERWISE SPECIFIED DIMENSIONS ARE IN INCHES AND INCLUDE CHEMICALLY APPLIED OR PLATED FINISHES		REQ'D ITEM	PART NUMBER	DESCRIPTION	SYM.
DECIMALS .X ± .05 .XX ± .01 .XXX ± .005	FRACTIONS 1/64	O. POSE		LIST OF MATERIAL	
MATERIAL		FINAL APPROVAL <i>AMB</i>	DATE 1-26-68	THE TECHNICAL MATERIEL CORP. MAMARONECK, NEW YORK	
FINISH		MECH. DES.	DATE	MARKING, DIAL	
		ELECT. DES.	DATE 1-26-68		
		CHECKED	DATE		
		DRAWN G.D.L	DATE 1-10-68		
NOTICE TO PERSONS RECEIVING THIS DRAWING THE TECHNICAL MATERIEL CORPORATION claims proprietary right in the material disclosed hereon. This drawing is issued in confidence for engineering information only and may not be reproduced or used to manufacture anything shown hereon without permission from THE TECHNICAL MATERIEL CORPORATION to the user. This drawing is loaned for mutual assistance and is subject to recall at any time.		SIZE A	CODE IDENT. NO. 82679	DWG NO. LD 2295	ISSUE Ø
			SCALE	SHEET	OF

APPLICATION		REVISIONS							
QTY	MODEL USED ON	ASS'Y NO.	LTR	DESCRIPTION	DATE	E.M.N.NO	DRAFT	CHKD	APPD
1	HFSR-4		X	EXP. RELEASE	10.11.67		H.G.		
			Ø	ORIG. RELEASE FOR PROD.	11.11.68	Ø	R.G.		



MARKING PROCESS: AS PER TMC SPECIFICATION S-727.

LETTERING: 1/8 HIGH BLACK GOTHIC, LOCATED AS SHOWN.

REF: MS5347

UNLESS OTHERWISE SPECIFIED DIMENSIONS ARE IN INCHES AND INCLUDE CHEMICALLY APPLIED OR PLATED FINISHES	REQ'D ITEM	PART NUMBER	DESCRIPTION	SYM.
DECIMALS .X ± .05 .XX ± .01 .XXX ± .005	R. HOGAN		LIST OF MATERIAL SK 3252-004-30	
FRACTIONS 1/64	FINAL APPROVAL <i>SPM</i>		THE TECHNICAL MATERIEL CORP. MAMARONECK, NEW YORK	
TOLS. ANGLES 0° - 30°	MECH. DES. <i>M. ZETINA</i>			
MATERIAL	ELECT. DES. <i>H.G.</i>			
FINISH	CHECKED <i>CM</i>			
S 401-451	DRAWN <i>H.G.</i>		MARKING MTG BRACKET-FREQ STD	

NOTICE TO PERSONS RECEIVING THIS DRAWING
 THE TECHNICAL MATERIEL CORPORATION claims proprietary right in the material disclosed hereon. This drawing is issued in confidence for engineering information only and may not be reproduced or used to manufacture anything shown hereon without permission from THE TECHNICAL MATERIEL CORPORATION to the user. This drawing is loaned for mutual assistance and is subject to recall at any time.

SIZE A	CODE IDENT. NO. 82679	DWG NO. LD 2299	ISSUE Ø
SCALE		SHEET	OF