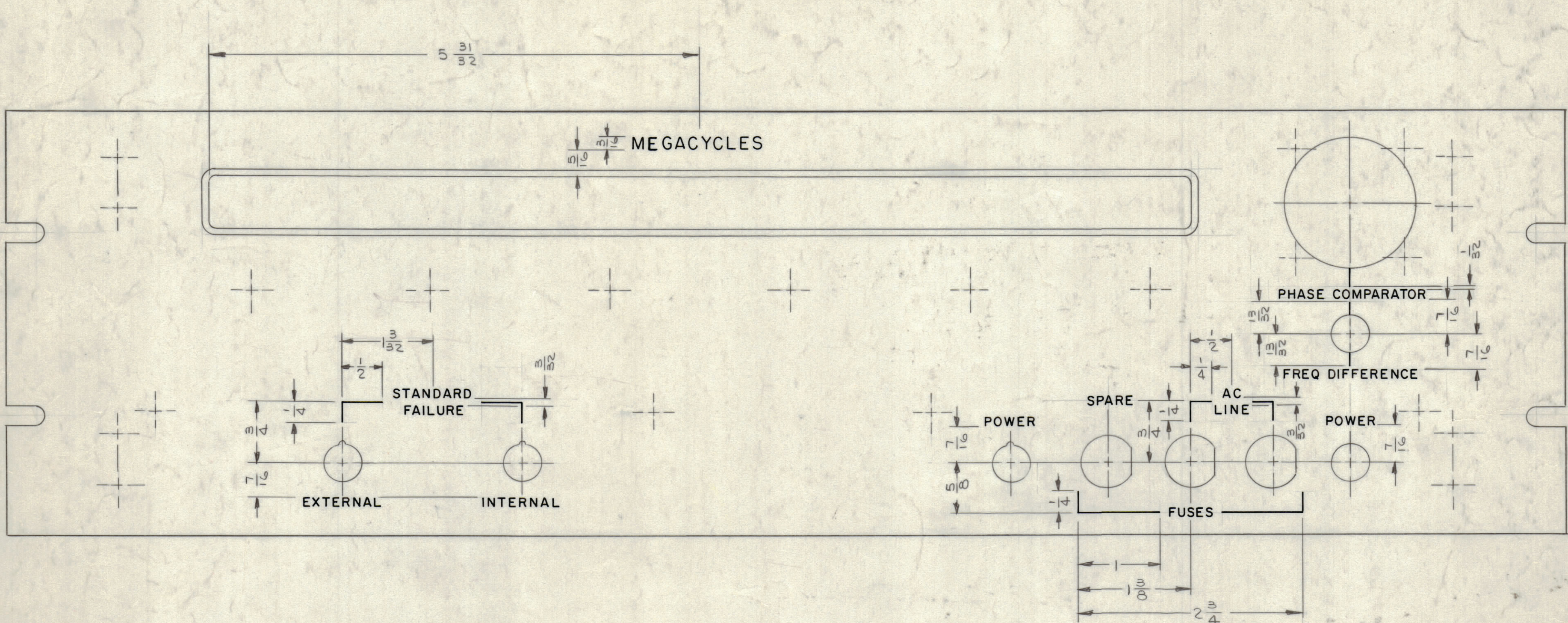


REVISIONS						
ZONE	LTR	DESCRIPTION	DATE	E.M.N.NO	DRAFT	CHKD APPD
	X	EXP. RELEASE				
	X/1	SEE SHEET 2 OF 2	11/5/68		K.H.	
	Ø	ORIGINAL RELEASE FOR PRODUCTION	11/8/68		H.S.	



- UNLESS OTHERWISE SPECIFIED -

- 1-ENGRAVING AS PER TMC SPEC S566.
- 2-ALL LETTERING & LINEWORK TO BE WHITE FILLED.
- 3-ALL LETTER GROUPS TO BE CENTERED ON HOLES.

HEIGHT OF LETTER	DEPTH OF STROKE	WIDTH OF STROKE
1/8	.010	.020
3/16	.010	.025
LINEWORK	.010	.015

1	HFSR-4	
QTY / UNIT	MODEL USED ON	ASS'Y NO.
APPLICATION		
	CODE	

NOTICE TO PERSONS RECEIVING THIS DRAWING
 THE TECHNICAL MATERIEL CORPORATION claims proprietary right in the material disclosed hereon. This drawing is issued in confidence for engineering information only and may not be reproduced or used to manufacture anything shown hereon without permission from THE TECHNICAL MATERIEL CORPORATION to the user. This drawing is loaned for mutual assistance and is subject to recall at any time.

UNLESS OTHERWISE SPECIFIED DIMENSIONS ARE IN INCHES AND INCLUDE CHEMICALLY APPLIED OR PLATED FINISHES

TOLERANCES ON

DECIMALS	FRACTIONS
.X ± .05	± 1/64
.XX ± .01	ANGLES
.XXX ± .005	± 0° -30'

QTY. REQ.	ITEM	PART NO.	DESCRIPTION	SYMBOL
LIST OF MATERIAL SK 3252-004-22				
THE TECHNICAL MATERIEL CORP. MAMARONECK, NEW YORK				
MARKING-PANEL, FRONT ENGRAVING				
MATERIAL		SIZE CODE IDENT.NO. DWG NO.		ISSUE
FINISH		C 82679	LD 2301	Ø
SCALE				SHEET 1 OF 2

FINAL APPROVAL: *[Signature]* DATE: 11.8.68
 MECH. DES.: M ZETENA DATE:
 ELECT. DES.: DATE:
 CHECKED: *[Signature]* DATE: 11/6/68
 CM: *[Signature]* DATE:
 DRAWN: GDL DATE: 10/12/67