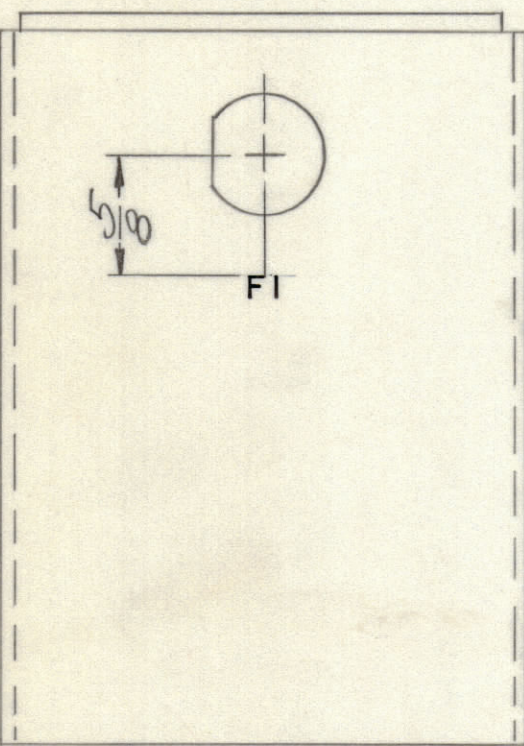
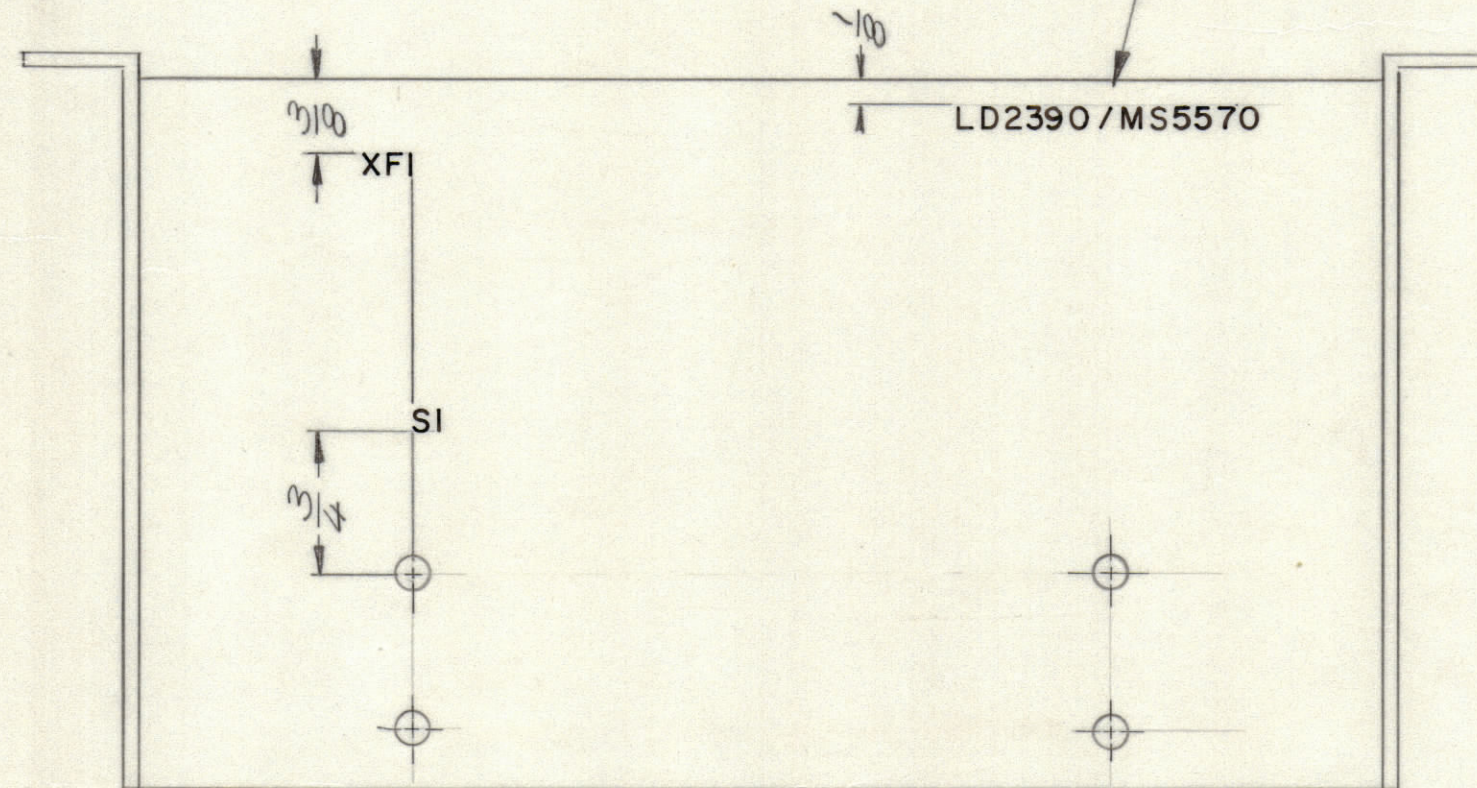


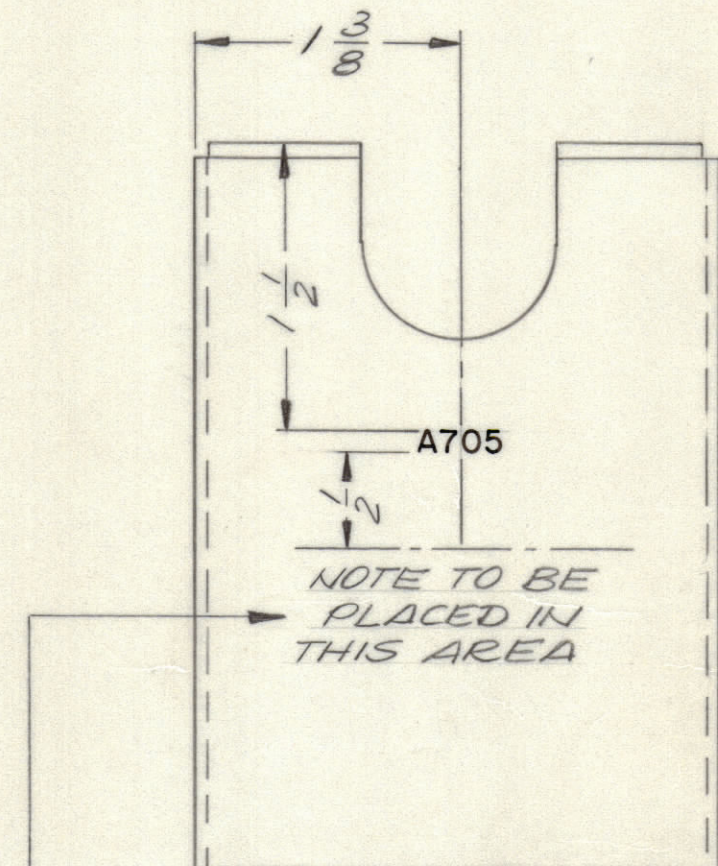
					REVISIONS		
E.M.N.NO	DRAFT	CHKD	ZONE	LTR	DESCRIPTION	DATE	APPROVED
	KH			X	EXP. RELEASE	10/29/69	
	W			Ø	ORIGINAL RELEASE FOR PRODUCTION	1/14/70	



LEFT SIDE VIEW



INSIDE VIEW



RIGHT SIDE VIEW

PARTIAL REFERENCE DESIGNATIONS ARE SHOWN. PREFIX THE PART DESIGNATION WITH THE SUBASSEMBLY DESIGNATION

UNLESS OTHERWISE SPECIFIED:

MARKING PROCESS: AS PER TMC SPECIFICATION S727  
 LETTERING: 1/8 HIGH BLACK GOTHIC, LOCATED AS SHOWN

REF.: MS 5570

1	PALA 10K	AX5095
QTY / UNIT	MODEL USED ON	ASS'Y NO.
APPLICATION		
CODE		

NOTICE TO PERSONS RECEIVING THIS DRAWING  
 THE TECHNICAL MATERIEL CORPORATION claims proprietary right in the material disclosed hereon. This drawing is issued in confidence for engineering information only and may not be reproduced or used to manufacture anything shown hereon without permission from THE TECHNICAL MATERIEL CORPORATION to the user. This drawing is loaned for mutual assistance and is subject to recall at any time.

UNLESS OTHERWISE SPECIFIED DIMENSIONS ARE IN INCHES AND INCLUDE CHEMICALLY APPLIED OR PLATED FINISHES

TOLERANCES ON  
 DECIMALS .X ± .05  
 .XX ± .01  
 .XXX ± .005  
 FRACTIONS ± 1/64  
 ANGLES ± 0° -30'

MATERIAL  
 FINISH

QTY. REQ.	ITEM	PART NO.	DESCRIPTION	SYMBOL
BUDETTI LIST OF MATERIAL				
FINAL APPROVAL		DATE	THE TECHNICAL MATERIEL CORP. MAMARONECK, NEW YORK	
MECH. DES.		DATE		
ELECT. DES.		DATE		
CHECKED		DATE		
DRAWN		DATE	MARKING, REM. PWR CHASSIS	
SIZE	CODE	IDENT NO.	DWG NO.	ISSUE
C	82679		LD 2390	Ø
SCALE 1:1			SHEET	OF