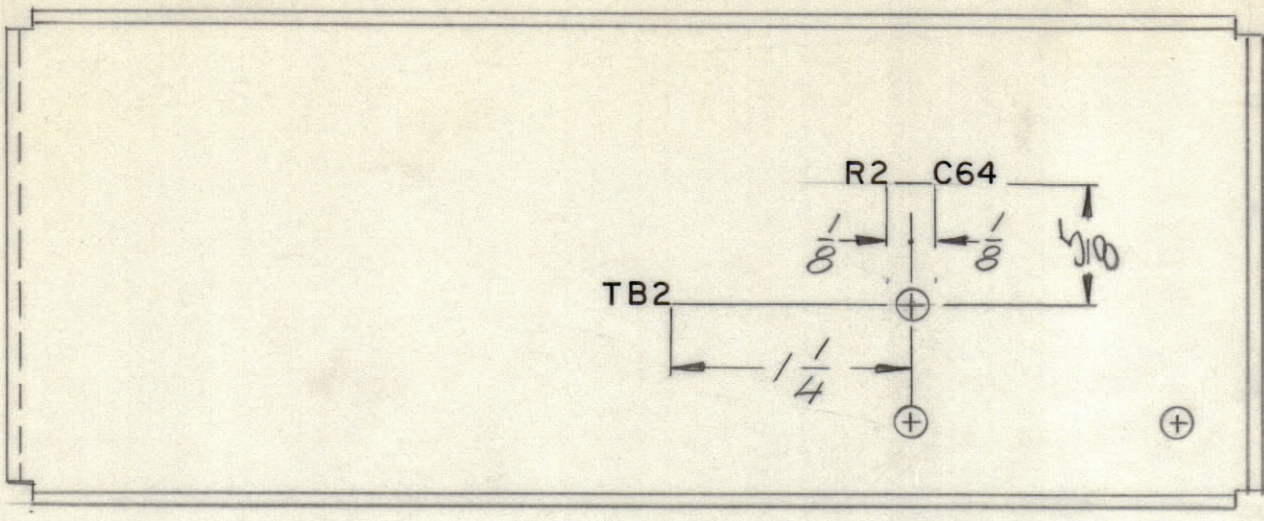
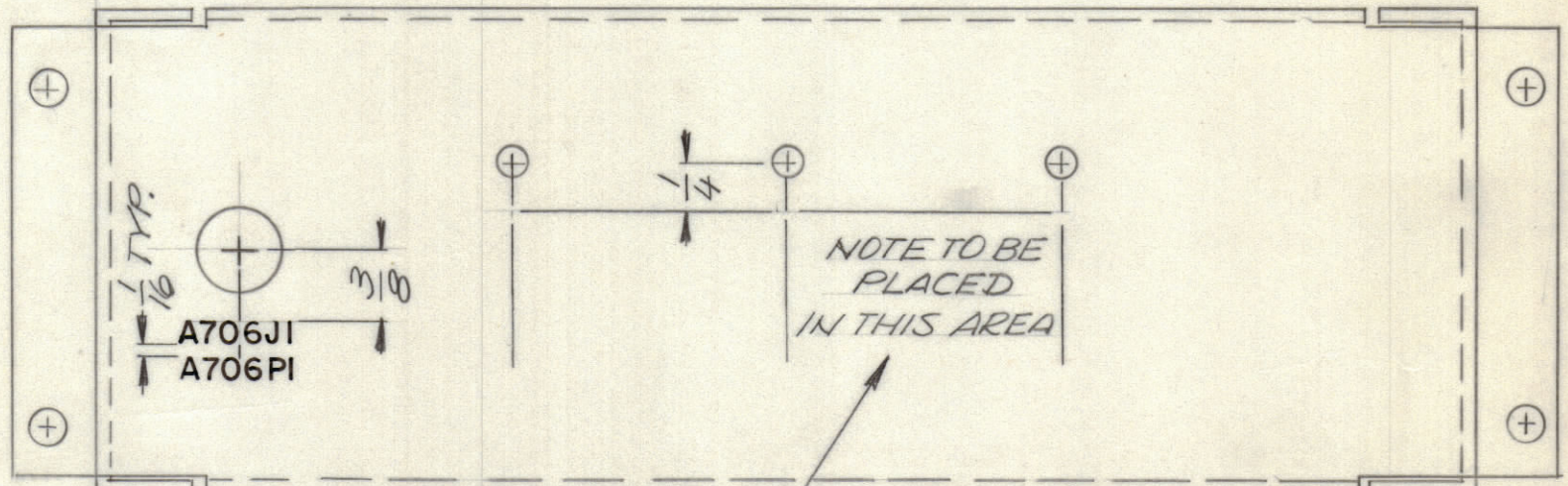


REVISIONS							
E.M.N.NO	DRAFT	CHKD	ZONE	LTR	DESCRIPTION	DATE	APPROVED
	CS			X	EXP. RELEASE	10/30/69	
				0	ORIGINAL RELEASE	5/7/73	



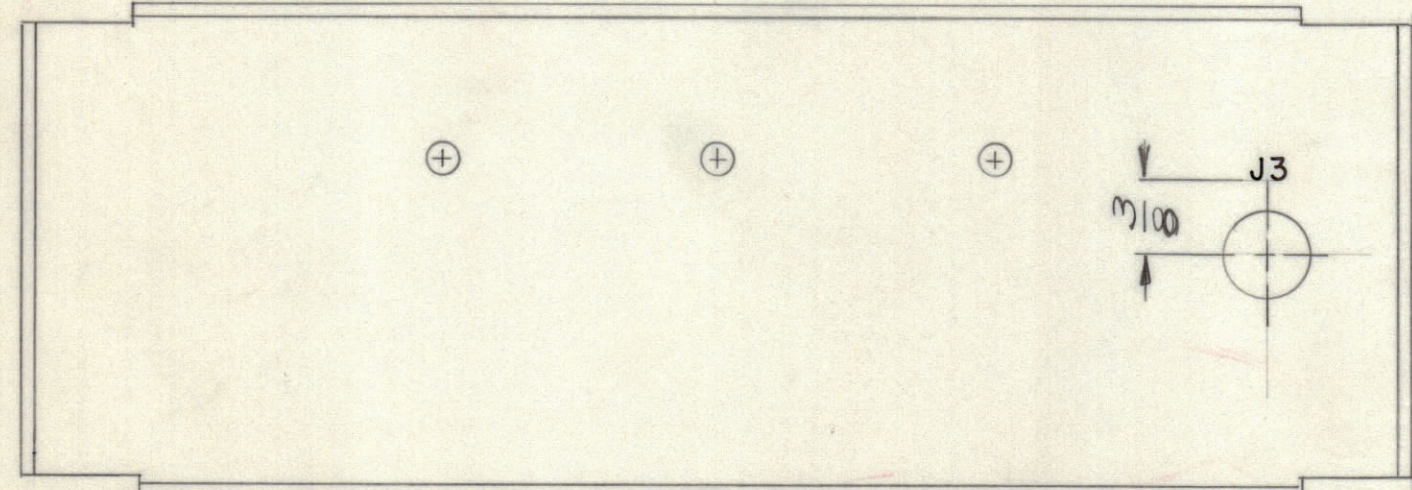
RIGHT INSIDE



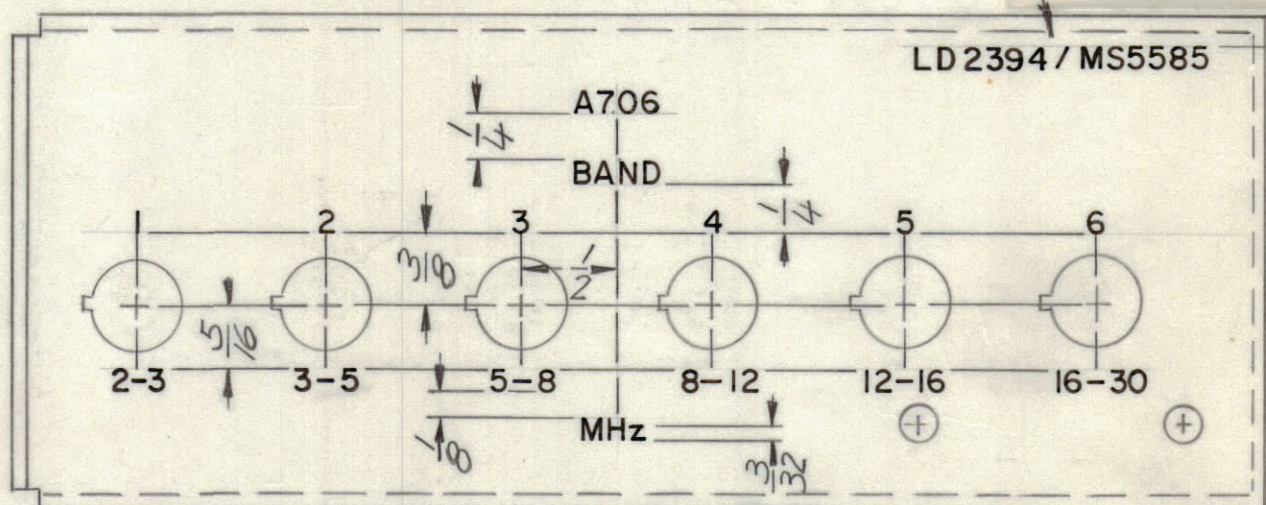
REAR OUTSIDE

PARTIAL REFERENCE DESIGNATIONS ARE SHOWN. PREFIX THE PART DESIGNATION WITH THE SUBASSEMBLY DESIGNATION.

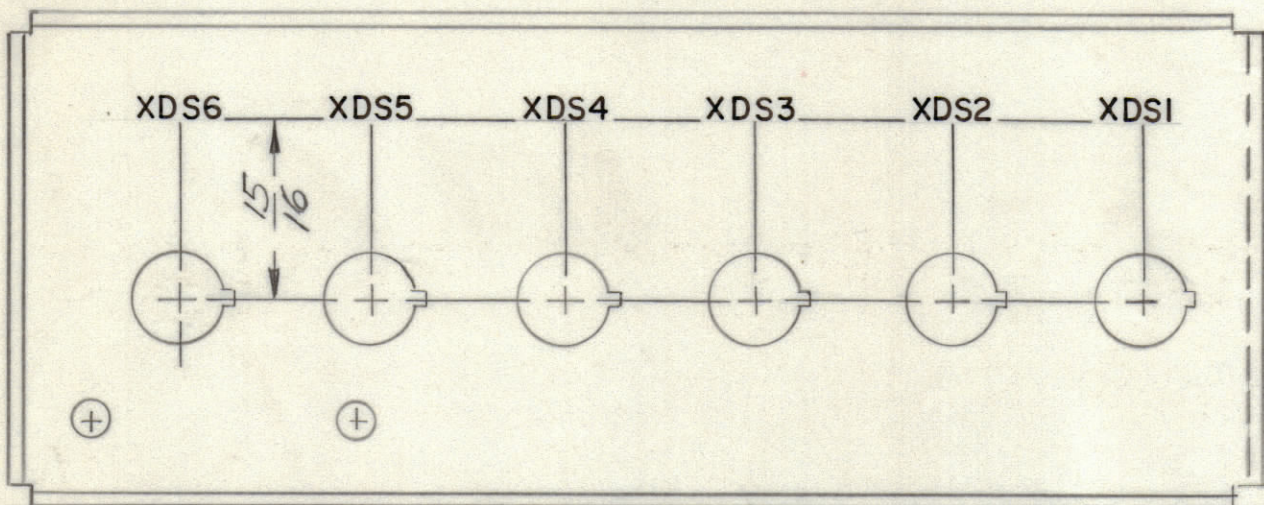
MARK TMC PART NUMBER 1/8 HIGH GOTHIC WITH LATEST REVISION LETTER



REAR INSIDE



LEFT OUTSIDE



LEFT INSIDE

UNLESS OTHERWISE SPECIFIED:

MARKING PROCESS: AS PER TMC SPECIFICATION S727

LETTERING: 1/8 HIGH BLACK GOTHIC, LOCATED AS SHOWN

REF.: MS5585

UNLESS OTHERWISE SPECIFIED DIMENSIONS ARE IN INCHES AND INCLUDE CHEMICALLY APPLIED OR PLATED FINISHES

TOLERANCES ON  
 DECIMALS .X ± .05  
 .XX ± .01  
 .XXX ± .005  
 FRACTIONS ± 1/64  
 ANGLES ± 0° -30'

QTY. REQ.	ITEM	PART NO.	DESCRIPTION	SYMBOL
LIST OF MATERIAL				
FINAL APPROVAL <i>[Signature]</i> DATE				
MECH. DES. DATE				
ELECT. DES. DATE				
CHECKED DATE				
DRAWN <i>[Signature]</i> DATE 10/30/69				
MATERIAL				
FINISH				
<b>THE TECHNICAL MATERIEL CORP.</b> MAMARONECK, NEW YORK				
MARKING, FILT. CONT. CHASSIS				
SIZE	CODE	IDENT NO.	DWG NO.	ISSUE
C	82679	LD 2394		0
SCALE 1:1			SHEET	OF

QTY / UNIT	MODEL USED ON	ASS'Y NO.
1	PALA - 10K	AF 109
APPLICATION		
CODE		
NOTICE TO PERSONS RECEIVING THIS DRAWING		
<p>THE TECHNICAL MATERIEL CORPORATION claims proprietary right in the material disclosed hereon. This drawing is issued in confidence for engineering information only and may not be reproduced or used to manufacture anything shown hereon without permission from THE TECHNICAL MATERIEL CORPORATION to the user. This drawing is loaned for mutual assistance and is subject to recall at any time.</p>		