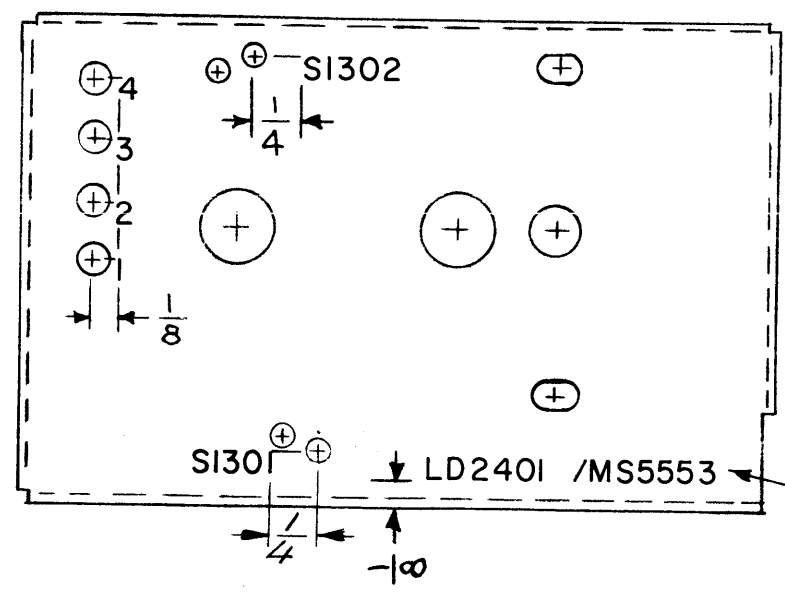
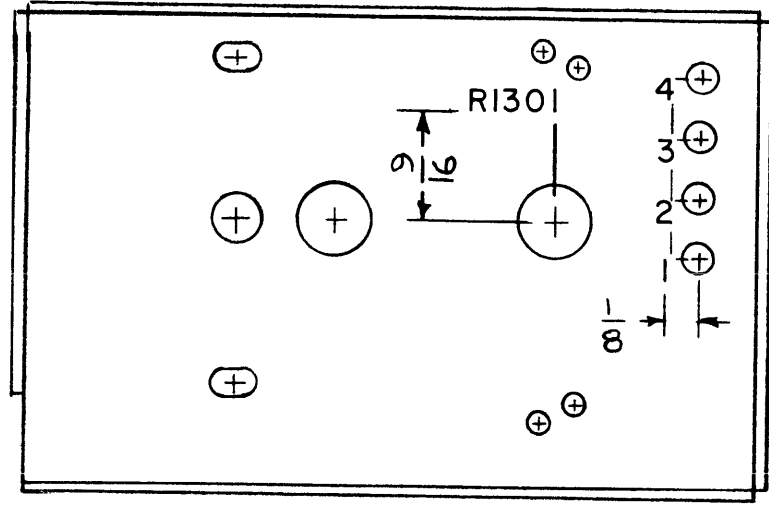


REVISIONS						
ZONE	LTR	DESCRIPTION	DATE	E.M.N.NO	DRAFT	CHKD APPD
	X	EXPERIMENTAL RELEASE	1-28-70	—	KD	
	Ø	ORIGINAL RELEASE	1/30/70		Ø	
	A	RELOC. "S1301"	4/23/70	19906	KL	Ø FB



MARK TMC PART NUMBER
1/8 HIGH GOTHIC WITH LATEST
REVISION LETTER

UNLESS OTHERWISE SPECIFIED:
MARKING PROCESS: AS PER TMC SPECIFICATION S727
LETTERING: 1/8 HIGH BLACK GOTHIC, LOCATED AS SHOWN

REF: MS 5553

1	PALA-10K	AX5080
QTY / UNIT	MODEL USED ON	ASS'Y NO.

APPLICATION	
CODE	

NOTICE TO PERSONS RECEIVING THIS DRAWING
THE TECHNICAL MATERIEL CORPORATION claims proprietary right in the material disclosed hereon. This drawing is issued in confidence for engineering information only and may not be reproduced or used to manufacture anything shown hereon without permission from THE TECHNICAL MATERIEL CORPORATION to the user. This drawing is loaned for mutual assistance and is subject to recall at any time.

UNLESS OTHERWISE SPECIFIED
DIMENSIONS ARE IN INCHES
AND INCLUDE CHEMICALLY APPLIED
OR PLATED FINISHES

DECIMALS	FRACTIONS
.X ± .05	1/64
.XX ± .01	TOLS. ANGLES
.XXX ± .005	0° .30'

MATERIAL

FINISH

REQ'D	ITEM	PART NUMBER	DESCRIPTION	SYM.
BUDETTI LIST OF MATERIAL				
FINAL APPROVAL		DATE	THE TECHNICAL MATERIEL CORP.	
MECH. DES.		DATE	MAMARONECK, NEW YORK	
ELECT. DES.		DATE	MARKING GEAR PLATE	
CHECKED		DATE	SIZE	ISSUE
DRAWN		DATE	B	A
			CODE IDENT. NO.	DWG NO.
			82679	LD2401
SCALE FULL		SHEET OF		