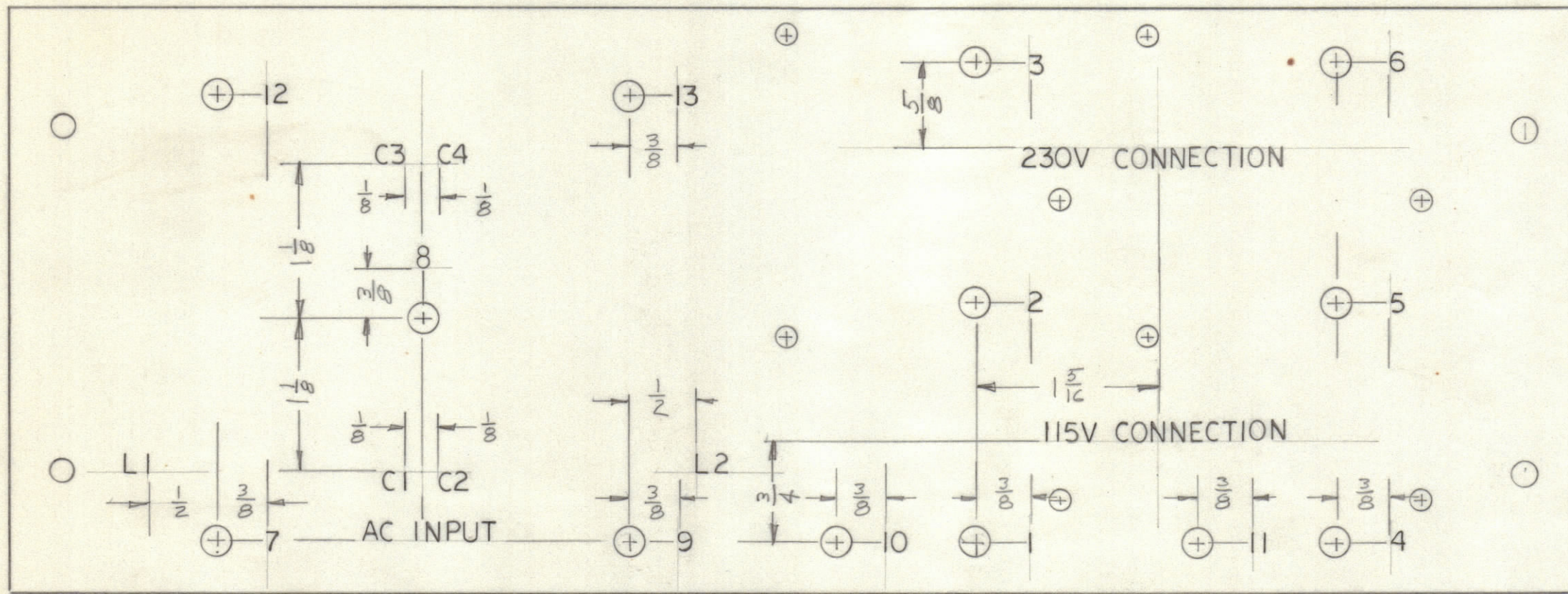
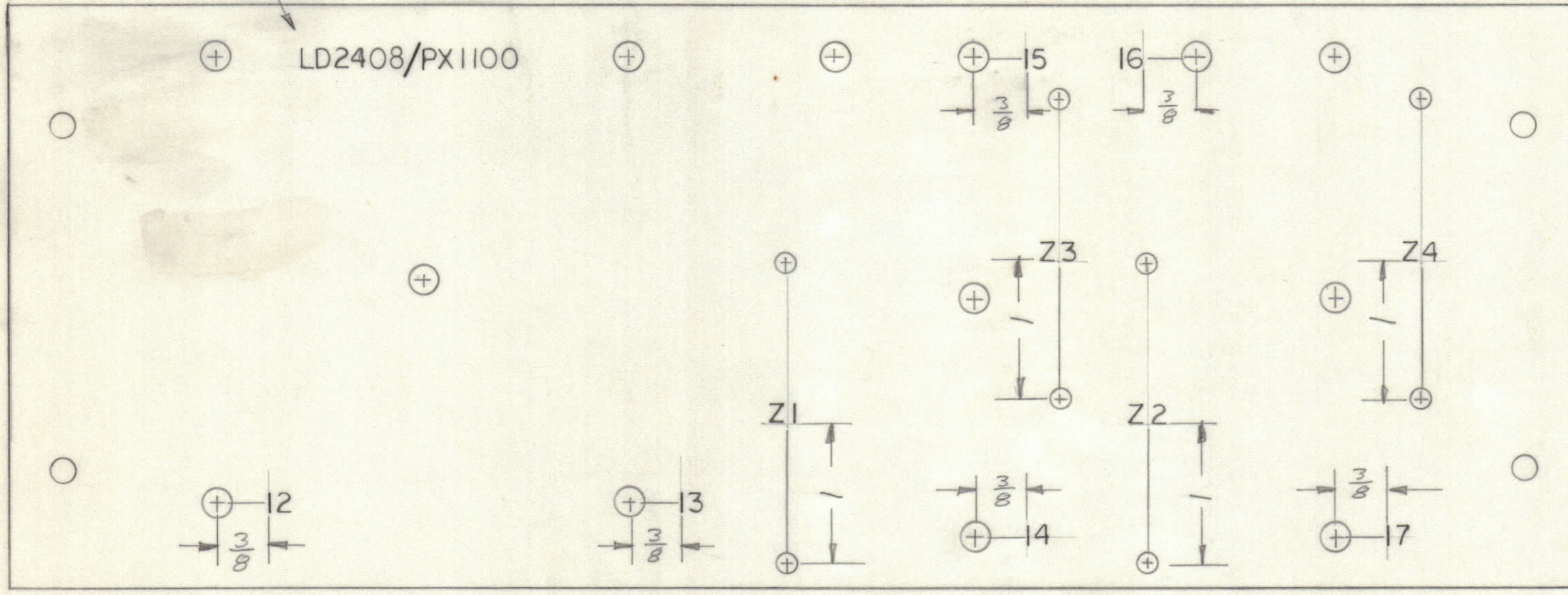


| REVISIONS | | | | | | | |
|-----------|-------|------|------|-----|---------------------------------|---------|----------|
| E.M.N.NO | DRAFT | CHKD | ZONE | LTR | DESCRIPTION | DATE | APPROVED |
| | W | | | Ø | ORIGINAL RELEASE FOR PRODUCTION | 8/27/70 | |



MARK TMC PART NUMBER
1/8 HIGH GOTHIC WITH LATEST
REVISION LETTER



REF: PX1100

MARKING PROCESS: AS PER TMC SPECIFICATION S727
LETTERING: 1/8 HIGH BLACK GOTHIC, LOCATED AS SHOWN

| | | |
|-------------|---------------|----------|
| 1 | APP-10 | A4895 |
| QTY / UNIT | MODEL USED ON | ASSY NO. |
| APPLICATION | | |
| CODE | | |

NOTICE TO PERSONS RECEIVING THIS DRAWING
THE TECHNICAL MATERIEL CORPORATION claims proprietary right in the material disclosed hereon. This drawing is issued in confidence for engineering information only and may not be reproduced or used to manufacture anything shown hereon without permission from THE TECHNICAL MATERIEL CORPORATION to the user. This drawing is loaned for mutual assistance and is subject to recall at any time.

UNLESS OTHERWISE SPECIFIED
DIMENSIONS ARE IN INCHES
AND INCLUDE CHEMICALLY APPLIED
OR PLATED FINISHES

TOLERANCES ON

| | |
|-------------|-----------|
| DECIMALS | FRACTIONS |
| .X ± .05 | ± 1/64 |
| .XX ± .01 | ANGLES |
| .XXX ± .005 | ± 0° -30' |

MATERIAL

FINISH

| QTY. REQ. | ITEM | PART NO. | DESCRIPTION | SYMBOL |
|--------------------------|------|----------|--|--------|
| BUDETTI LIST OF MATERIAL | | | | |
| FINAL APPROVAL | | DATE | THE TECHNICAL MATERIEL CORP. MAMARONECK, NEW YORK | |
| MECH. DES. | | DATE | | |
| ELECT. DES. | | DATE | | |
| CHECKED | | DATE | | |
| DRAWN | | DATE | MARKING, PWR. INP. BD | |
| SCALE | | | | |
| C 82679 | | | LD2408 | Ø |
| SHEET | | | OF | |

LD2408