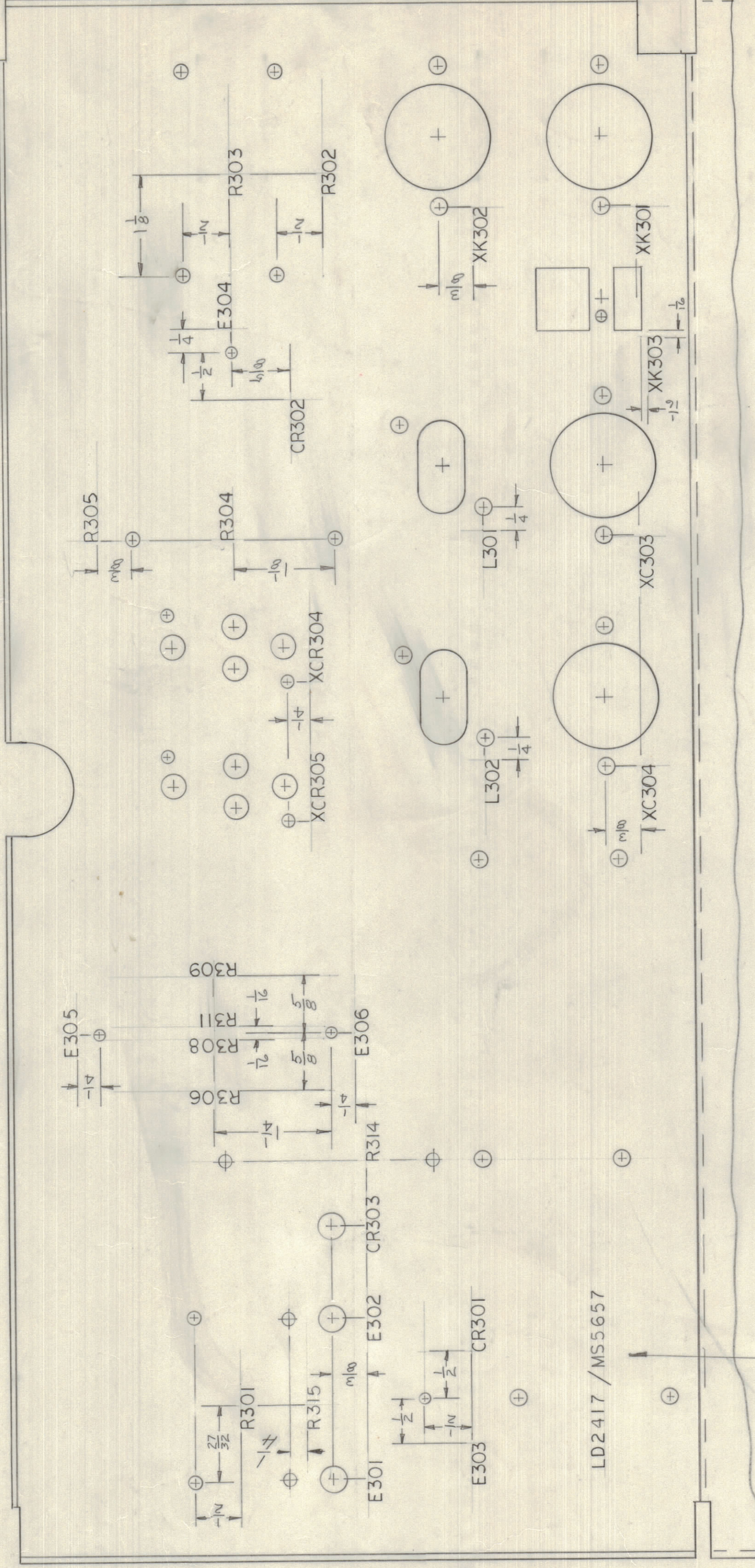
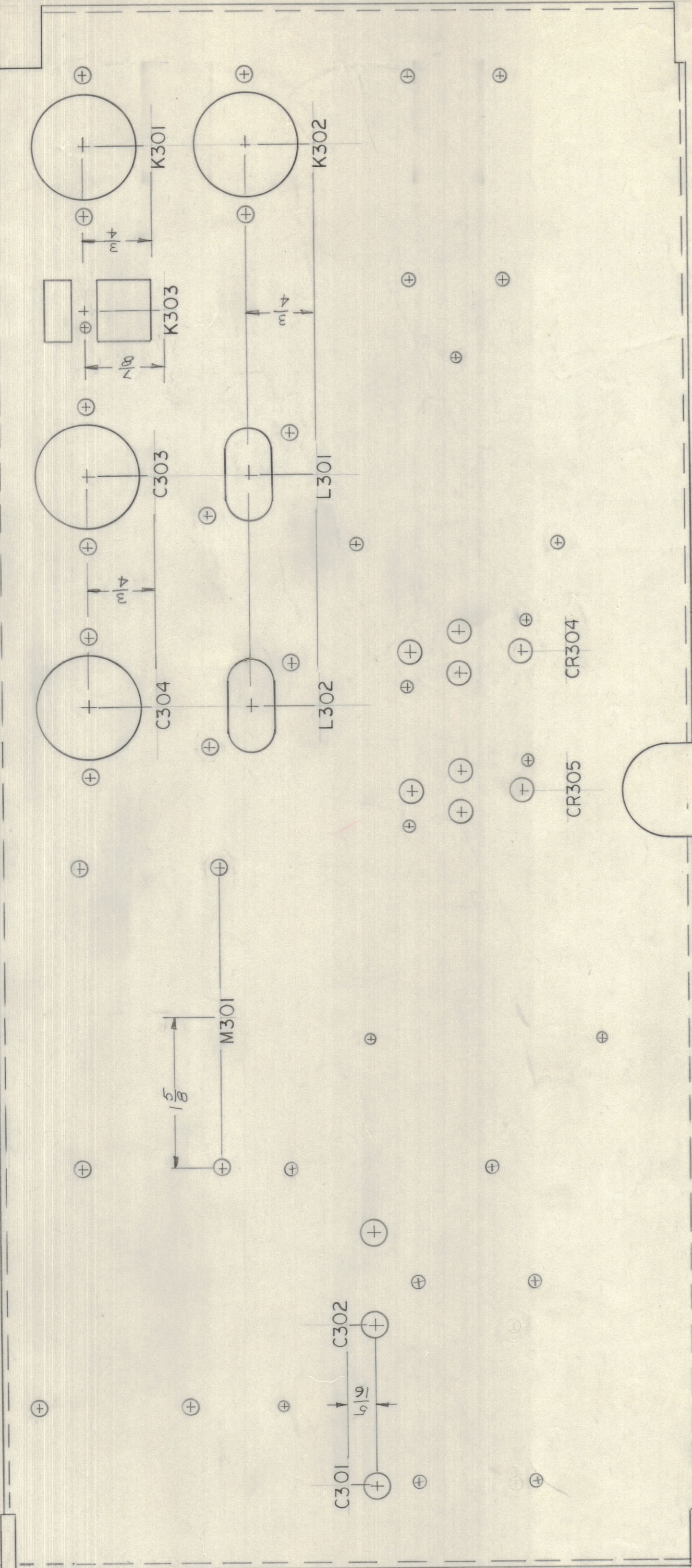


REVISIONS							
E.M.N.NO	DRAFT	CHKD	ZONE	LTR	DESCRIPTION	DATE	APPROVED
20275	GE	DU		A	ADD R314, 315 RELOCATE R301	3/18/71	P.E.B.
					ORIGINAL RELEASE FOR PRODUCTION	9/1/70	



TOP VIEW

BOTTOM VIEW

MARKING PROCESS: AS PER TMC SPECIFICATION S727  
 LETTERING: 1/8 HIGH BLACK GOTHIC, LOCATED AS SHOWN

QTY / UNIT	MODEL USED ON	ASSY NO.
	API49	
APPLICATION		
CODE		
<small>NOTICE TO PERSONS RECEIVING THIS DRAWING</small> <small>THE TECHNICAL MATERIEL CORPORATION claims proprietary right in the material disclosed herein. This drawing is issued in confidence for engineering information only and may not be reproduced or used to manufacture anything shown hereon without permission from THE TECHNICAL MATERIEL CORPORATION to the user. This drawing is loaned for mutual assistance and is subject to recall at any time.</small>		

QTY. REQ.	ITEM	PART NO.	DESCRIPTION	SYMBOL
BUDETTI LIST OF MATERIAL				
FINAL APPROVAL	<i>[Signature]</i>	DATE	9/1/70	
MECH. DES.	<i>[Signature]</i>	DATE	28 APR 70	
ELECT. DES.	<i>[Signature]</i>	DATE		
CHECKED	<i>[Signature]</i>	DATE		
DRAWN	<i>[Signature]</i>	DATE	28 APR 70	
TOLERANCES ON				
DECIMALS	FRACTIONS			
.X ± .05	± 1/64			
.XX ± .01	ANGLES			
.XXX ± .005	± 0° - 30'			
MATERIAL				
FINISH				

MARK TMC PART NUMBER  
 1/8 HIGH GOTHIC WITH LATEST  
 REVISION LETTER

REF: MS5657

SIZE	CODE	IDENT NO.	DWG NO.	ISSUE
D	82679	LD2417	A	
SCALE				SHEET OF

THE TECHNICAL MATERIEL CORP.  
 MAMARONECK, NEW YORK

MARKING, MAIN CHASSIS

D  
C  
B  
A

D  
C  
B  
A

8  
7  
6  
5  
4  
3  
2  
1

8  
7  
6  
5  
4  
3  
2  
1

8  
7  
6  
5  
4  
3  
2  
1

8  
7  
6  
5  
4  
3  
2  
1

8  
7  
6  
5  
4  
3  
2  
1

8  
7  
6  
5  
4  
3  
2  
1

8  
7  
6  
5  
4  
3  
2  
1

8  
7  
6  
5  
4  
3  
2  
1