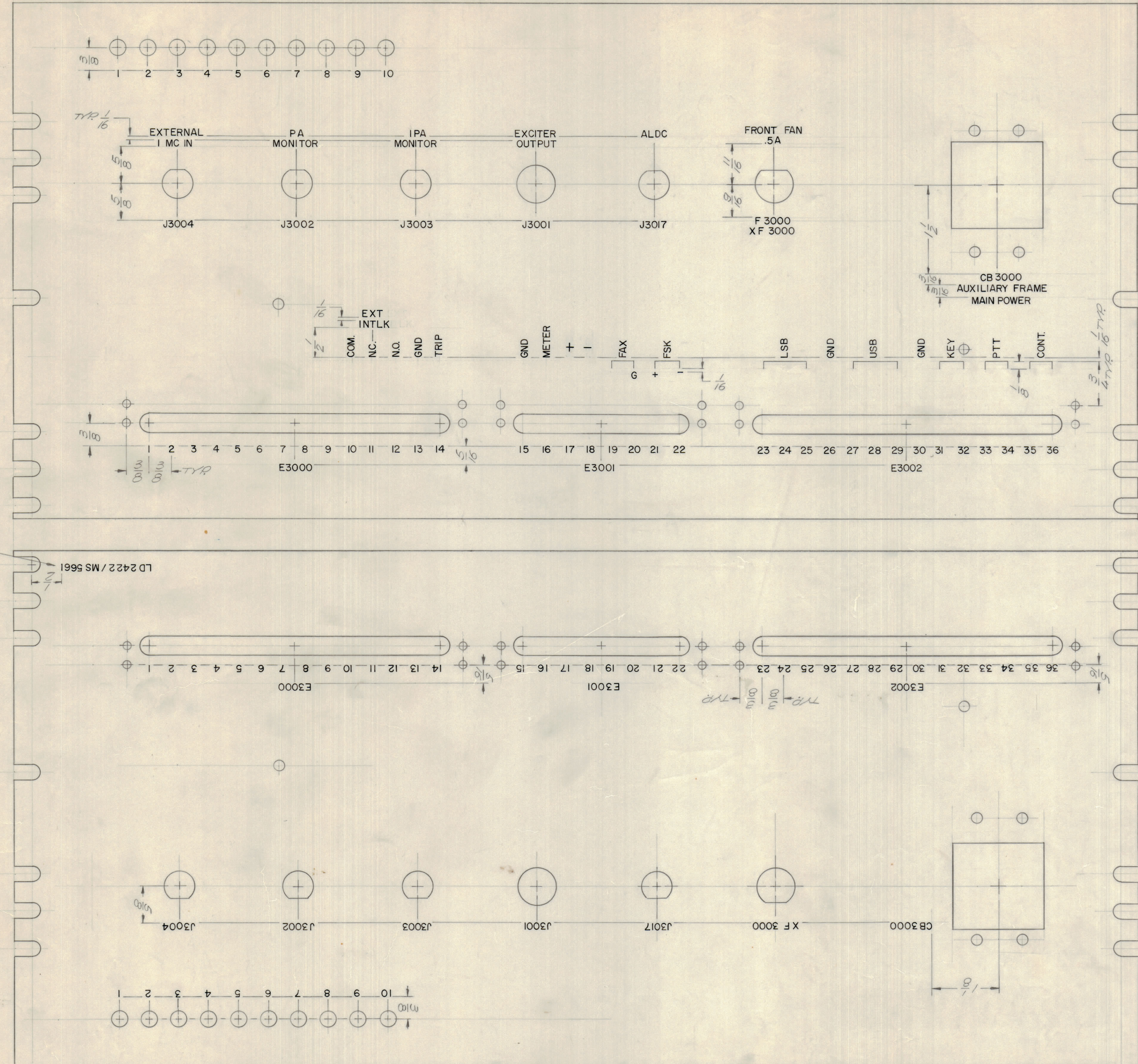


REVISIONS							
E.M.N.NO	DRAFT	CHKD	ZONE	LTR	DESCRIPTION	DATE	APPROVED
	①			①	ORIGINAL RELEASE FOR PRODUCTION	10/10/70	PEL
20293	R	W		A	CHG. FWD TO + & REFL TO -	3-24-71	PEL



FRONT VIEW

REAR VIEW

MARK TMC PART NUMBER  
1/8 HIGH GOTHIC WITH LATEST  
REVISION LETTER ON REAR OF PANEL

MARKING PROCESS: AS PER TMC SPECIFICATION S727  
LETTERING: 1/8 HIGH BLACK GOTHIC, LOCATED AS SHOWN

REF: M55641

1	GPTM-10KLA	AX5123
QTY / UNIT	MODEL USED ON	ASS'Y NO.
APPLICATION		
CODE		
NOTICE TO PERSONS RECEIVING THIS DRAWING THE TECHNICAL MATERIEL CORPORATION claims proprietary right in the material disclosed herein. This drawing is issued in confidence for engineering information only and may not be reproduced or used to manufacture anything shown herein without permission from THE TECHNICAL MATERIEL CORPORATION to the user. This drawing is loaned for mutual assistance and is subject to recall at any time.		

QTY. REQ.	ITEM	PART NO.	DESCRIPTION	SYMBOL
BUDE TTI LIST OF MATERIAL				
UNLESS OTHERWISE SPECIFIED DIMENSIONS ARE IN INCHES AND INCLUDE CHEMICALLY APPLIED OR PLATED FINISHES		FINAL APPROVAL	DATE	<b>THE TECHNICAL MATERIEL CORP.</b> MAMARONECK, NEW YORK  <b>MARKING, CTR SHLD PNL</b>
TOLERANCES ON		MECH. DES.	DATE	
DECIMALS .X ± .05		ELECT. DES.	DATE	
FRACTIONS ± 1/64		CHECKED	DATE	
ANGLES ± 0° - 30'		DRAWN	DATE	
MATERIAL		SIZE CODE IDENT NO. DWG NO.		ISSUE
FINISH		D 82679 LD2422		A
SCALE		SHEET		OF