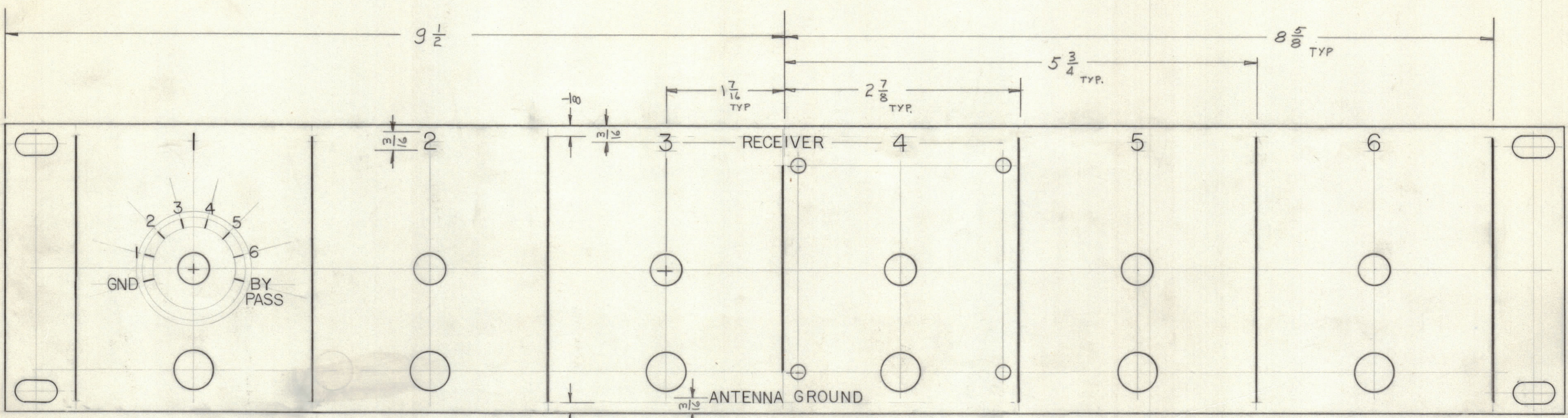


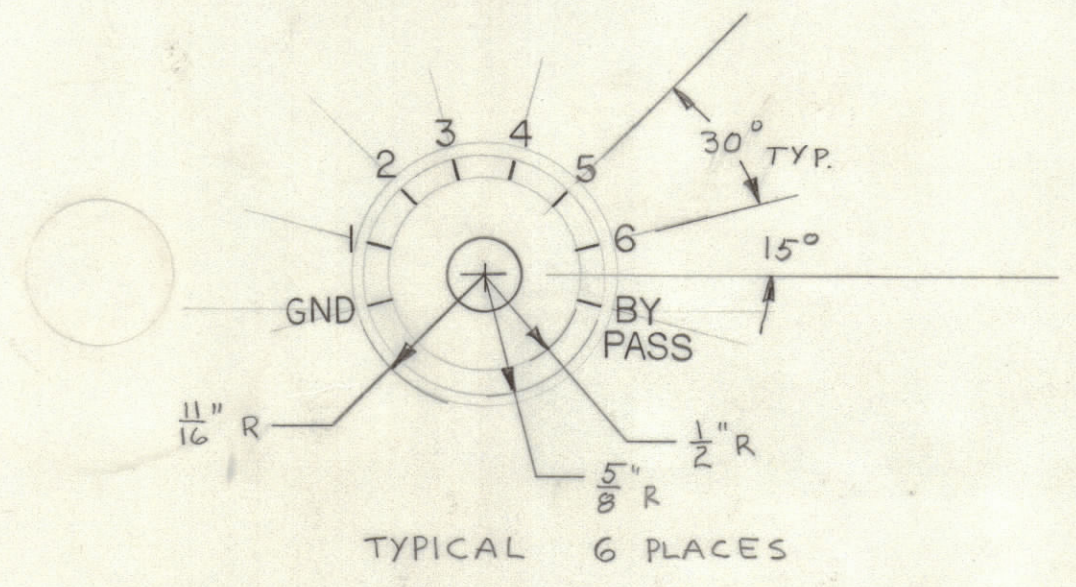
					REVISIONS		
E.M.N.NO	DRAFT	CHKD	ZONE	LTR	DESCRIPTION	DATE	APPROVED
	(1)			Ø	ORIGINAL RELEASE FOR PRODUCTION	10/21/70	



FRONT VIEW

HEIGHT	DEPTH	WIDTH
1/8	.010	.020
3/16	.010	.025
LINES	.010	.015

UNLESS OTHERWISE SPECIFIED:  
 1. ENGRAVING TO BE 1/8" HIGH GOTHIC.  
 2. ALL ENGRAVING TO BE WHITE FILLED.  
 3. ALL LETTER GROUPS TO BE CENTERED ON HOLES.



1	RCP-6	
QTY / UNIT	MODEL USED ON	ASS'Y NO.
APPLICATION		
	CODE	

NOTICE TO PERSONS RECEIVING THIS DRAWING  
 THE TECHNICAL MATERIEL CORPORATION claims proprietary right in the material disclosed hereon. This drawing is issued in confidence for engineering information only and may not be reproduced or used to manufacture anything shown hereon without permission from THE TECHNICAL MATERIEL CORPORATION to the user. This drawing is loaned for mutual assistance and is subject to recall at any time.

UNLESS OTHERWISE SPECIFIED DIMENSIONS ARE IN INCHES AND INCLUDE CHEMICALLY APPLIED OR PLATED FINISHES

TOLERANCES ON  
 DECIMALS .X ± .05  
 .XX ± .01  
 .XXX ± .005  
 FRACTIONS ± 1/64  
 ANGLES ± 0° -30'

QTY. REQ.	ITEM	PART NO.	DESCRIPTION	SYMBOL		
	BUDETTI		LIST OF MATERIAL			
	FINAL APPROVAL	DATE	THE TECHNICAL MATERIEL CORP. MAMARONECK, NEW YORK			
	MECH. DES.	DATE				
	ELECT. DES.	DATE				
	CHECKED	DATE				
	DRAWN	DATE	ENGRAVING, FR. PNL.			
	MATERIAL		SIZE	CODE IDENT NO.	DWG NO.	ISSUE
	FINISH		C	82679	LD2432	Ø
			SCALE		SHEET	OF

REF:MS5677

LD2432