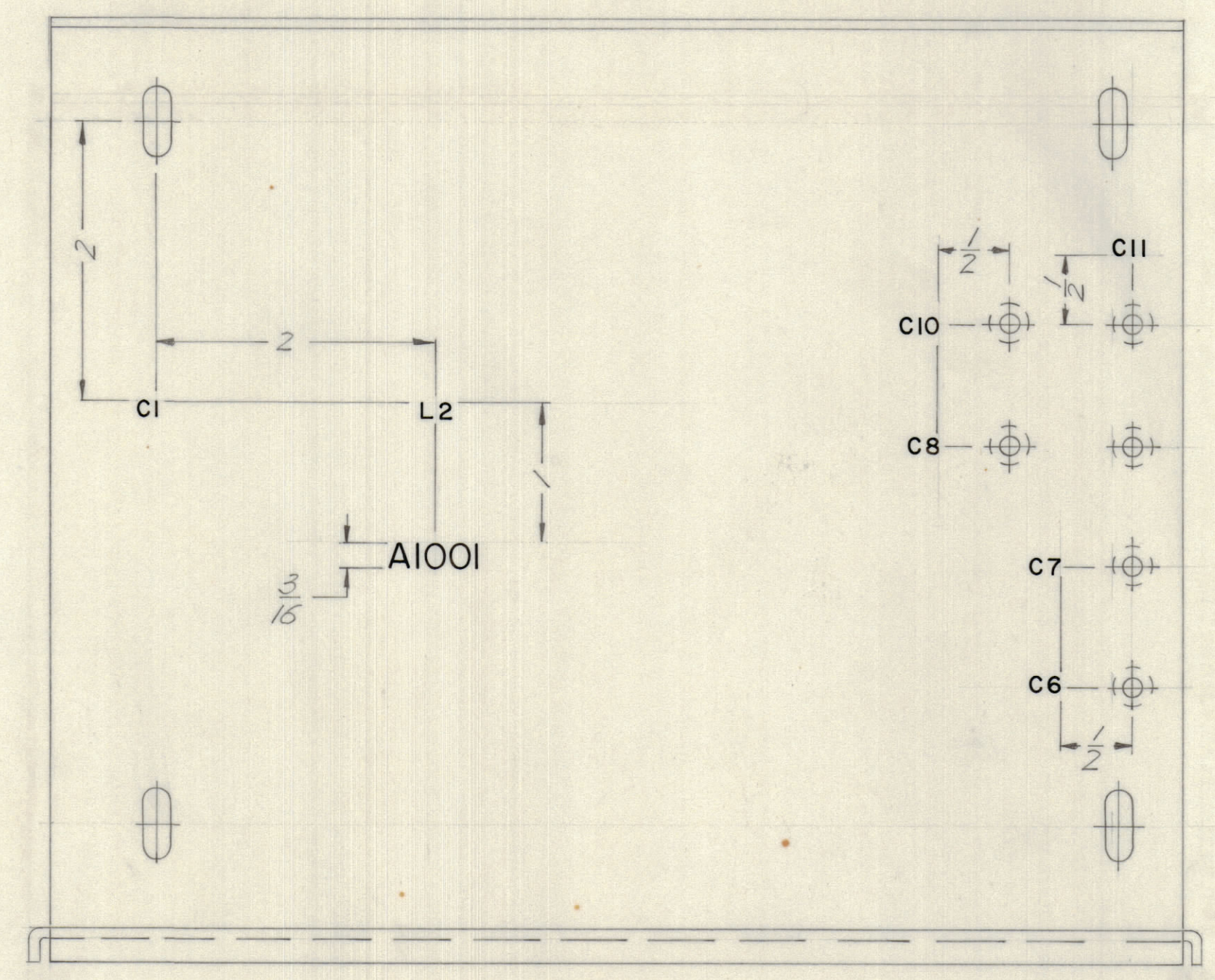
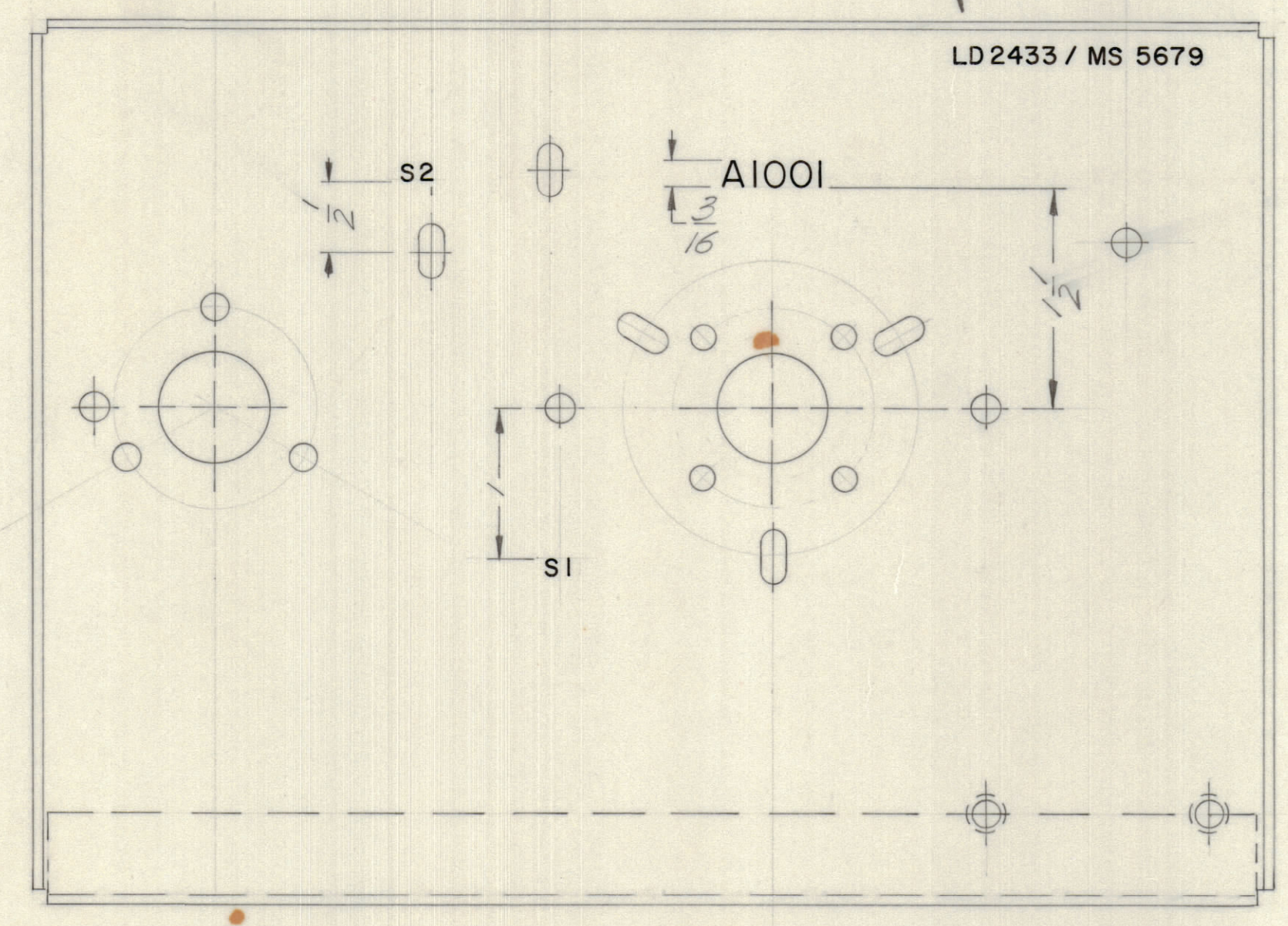


REVISIONS						
E.M.N.NO	DRAFT	CHKD	ZONE	LTR	DATE	APPROVED
	0			0	10/26/70	ORIGINAL RELEASE FOR PRODUCTION



MARK TMC PART NUMBER
1/8 HIGH GOTHIC WITH LATEST
REVISION LETTER ON REAR OF PANEL

MARKING PROCESS: AS PER TMC SPECIFICATION S727
LETTERING: 1/8 HIGH BLACK GOTHIC, LOCATED AS SHOWN



REF. MS 5679

QTY. REQ.	ITEM	PART NO.	DESCRIPTION	SYMBOL
	F. BUDETTI LIST OF MATERIAL			
	THE TECHNICAL MATERIEL CORP. MAMARONECK, NEW YORK			
	MARKING CHAS. BND. SW.			
	SIZE	CODE IDENT NO.	DWG NO.	ISSUE
	D	82679	LD 2433	0
	SCALE			SHEET OF

QTY / UNIT	MODEL USED ON	ASS'Y NO.
	TLAM / K	
APPLICATION		
CODE		
MATERIAL		
FINISH		

NOTICE TO PERSONS RECEIVING THIS DRAWING
THE TECHNICAL MATERIEL CORPORATION claims proprietary right in the material disclosed herein. This drawing is issued in confidence for engineering information only and may not be reproduced or used to manufacture anything shown herein without permission from THE TECHNICAL MATERIEL CORPORATION to the user. This drawing is loaned for mutual assistance and is subject to recall at any time.

D
C
B
A

D
C
B
A