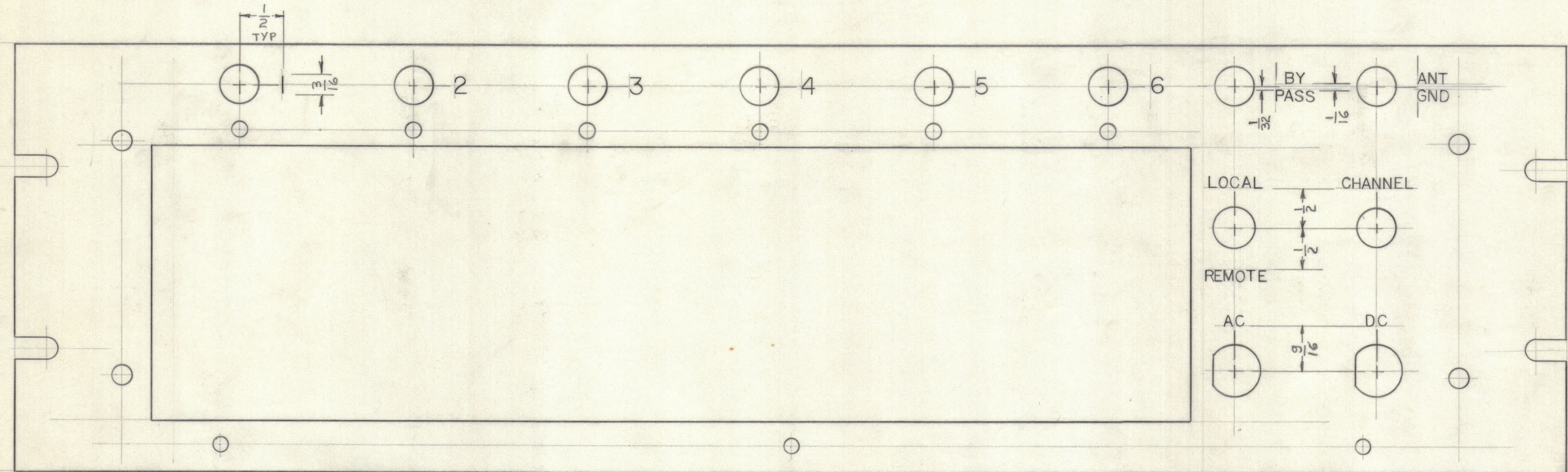


REVISIONS					DATE	APPROVED
E.M.N.NO	DRAFT	CHKD	ZONE	LTR	DESCRIPTION	
	00			0	ORIGINAL RELEASE FOR PRODUCTION	11/30/70



ENGRAVING FRONT VIEW

UNLESS OTHERWISE SPECIFIED:
ENGRAVING TO BE 1/8" HIGH WHITE FILLED GOTHIC.

HEIGHT	DEPTH	WIDTH
1/8	.010	.020
3/16	.010	.025

REF: M35685

QTY. REQ.	ITEM	PART NO.	DESCRIPTION	SYMBOL
LIST OF MATERIAL				
THE TECHNICAL MATERIEL CORP. MAMARONECK, NEW YORK				
ENGRAVING, FRONT PNL				
UNLESS OTHERWISE SPECIFIED DIMENSIONS ARE IN INCHES AND INCLUDE CHEMICALLY APPLIED OR PLATED FINISHES TOLERANCES ON DECIMALS .X ± .05 .XX ± .01 .XXX ± .005 FRACTIONS ± 1/64 ANGLES ± 0° -30'			FINAL APPROVAL <i>[Signature]</i> DATE 27 Oct 70 MECH. DES. <i>[Signature]</i> DATE 26 Oct 70 ELECT. DES. DATE CHECKED DATE DRAWN <i>[Signature]</i> DATE 26 Oct 70	SIZE CODE IDENT NO. DWG NO. ISSUE C 82679 LD2435
QTY / UNIT MODEL USED ON ASS'Y NO.		MATERIAL FINISH		
APPLICATION CODE		SCALE SHEET OF		

NOTICE TO PERSONS RECEIVING THIS DRAWING
 THE TECHNICAL MATERIEL CORPORATION claims proprietary right in the material disclosed hereon. This drawing is issued in confidence for engineering information only and may not be reproduced or used to manufacture anything shown hereon without permission from THE TECHNICAL MATERIEL CORPORATION to the user. This drawing is loaned for mutual assistance and is subject to recall at any time.

LD2435