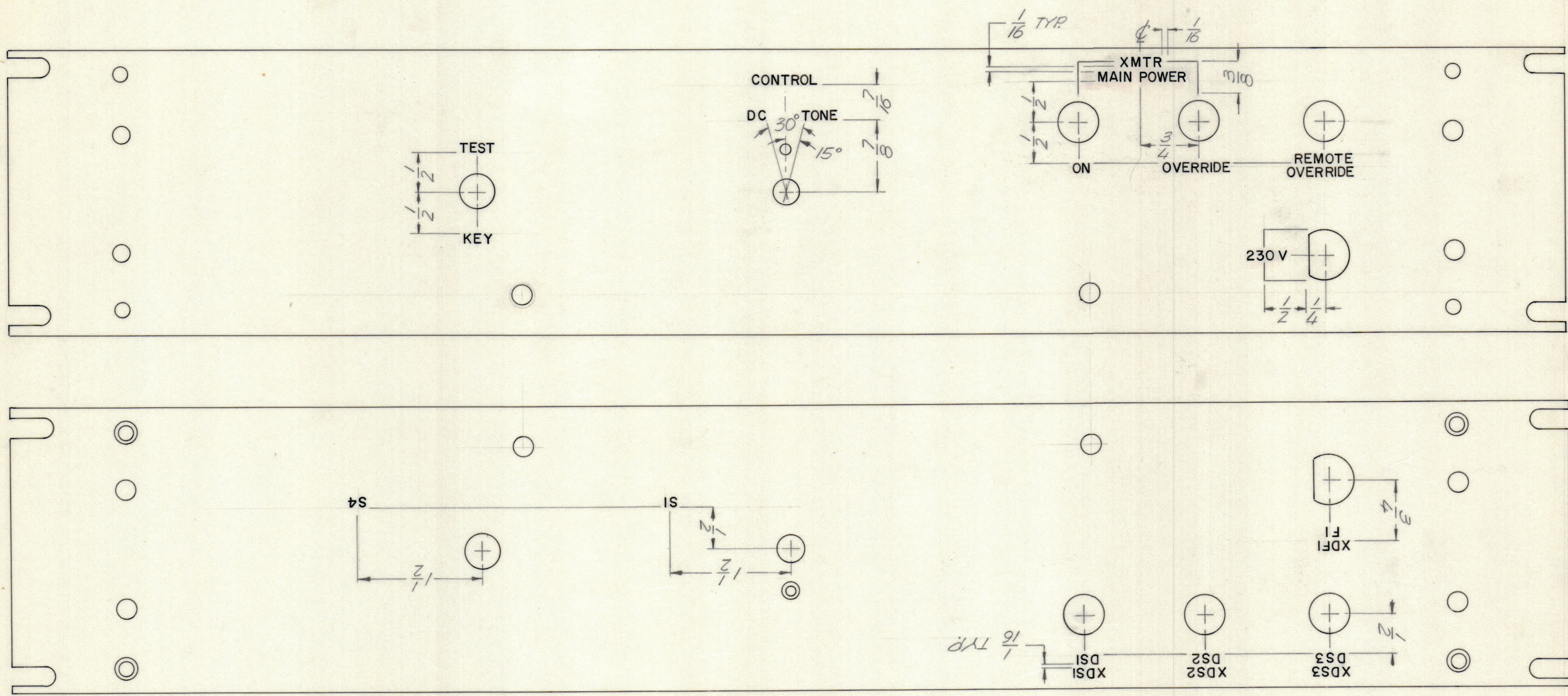


REVISIONS							
E.M.N.NO	DRAFT	CHKD	ZONE	LTR	DESCRIPTION	DATE	APPROVED
	0			0	ORIGINAL RELEASE FOR PRODUCTION	3/31/71	G.E.H.



REAR VIEW

ENGRAVING PROCESS AS PER TMC SPEC S-566
FRONT ONLY.

MARKING PROCESS: AS PER TMC SPECIFICATION S727
LETTERING: 1/8 HIGH BLACK GOTHIC, LOCATED AS SHOWN

(REAR ONLY)

HEIGHT OF LETTERS	DEPTH OF STROKE	WIDTH OF STROKE	COLOR
1/8	.010	.020	WHITE

FINISH NOTES:
1. S404 - IRIDITE 14-2 AL-COAT.
2. S114 - ZINC CHROMATE PRIMER } FRONT AND
3. S115 - SMOOTH GRAY ENAMEL } EDGES ONLY
OR
PRIME AND PAINT PER CUSTOMER'S SPECIFICATIONS

QTY / UNIT	MODEL USED ON	ASS'Y NO.
	AX51287	
APPLICATION		
	CODE	

NOTICE TO PERSONS RECEIVING THIS DRAWING
THE TECHNICAL MATERIEL CORPORATION claims proprietary right in the material disclosed hereon. This drawing is issued in confidence for engineering information only and may not be reproduced or used to manufacture anything shown hereon without permission from THE TECHNICAL MATERIEL CORPORATION to the user. This drawing is loaned for mutual assistance and is subject to recall at any time.

QTY. REQ.	ITEM	PART NO.	DESCRIPTION	SYMBOL		
REF. MS 5934						
S. DE MARCO LIST OF MATERIAL						
FINAL APPROVAL		DATE	THE TECHNICAL MATERIEL CORP. MAMARONECK, NEW YORK			
MECH. DES.		DATE				
ELECT. DES.		DATE				
CHECKED		DATE				
DRAWN		DATE	LETTERING DIAGRAM FRONT PANEL			
MATERIAL						
FINISH AS NOTED			SIZE	CODE IDENT NO.	DWG NO.	ISSUE
			C	82679	LD 2438	φ
			SCALE		SHEET	OF