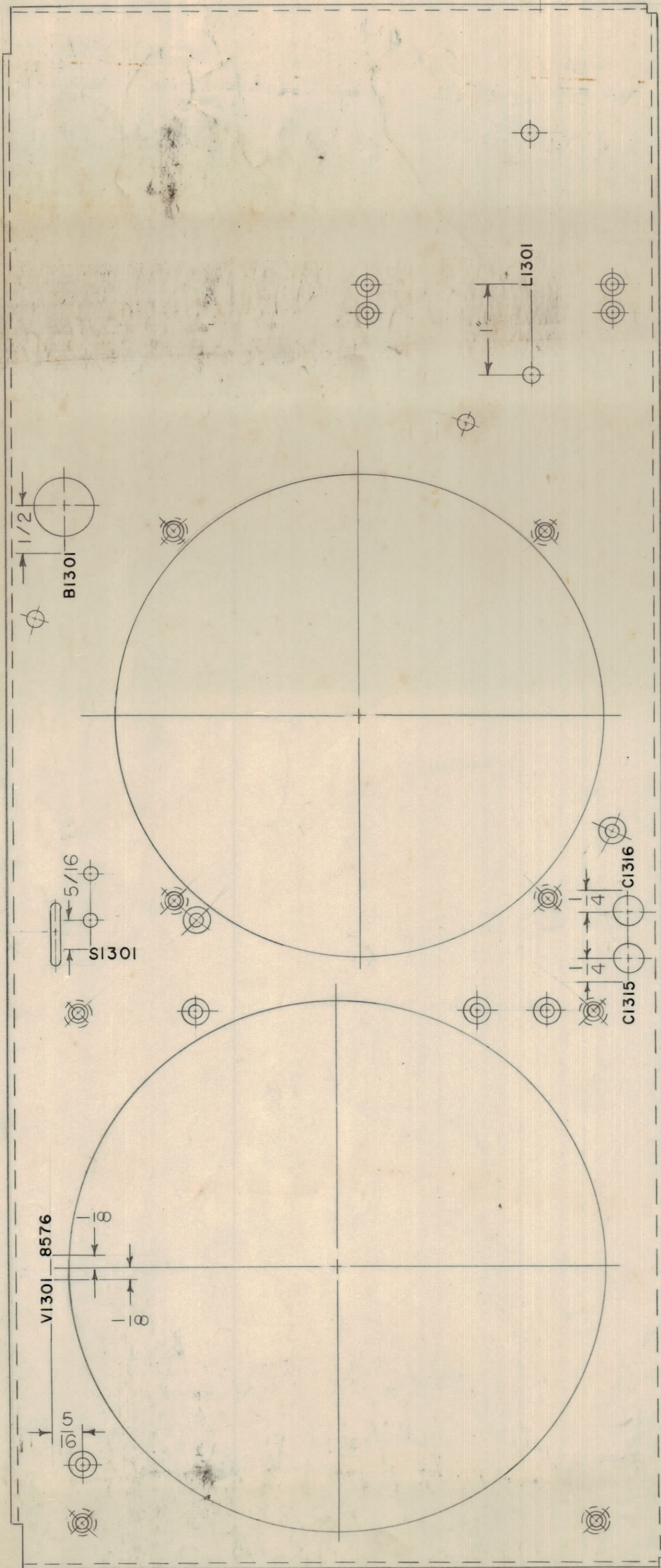
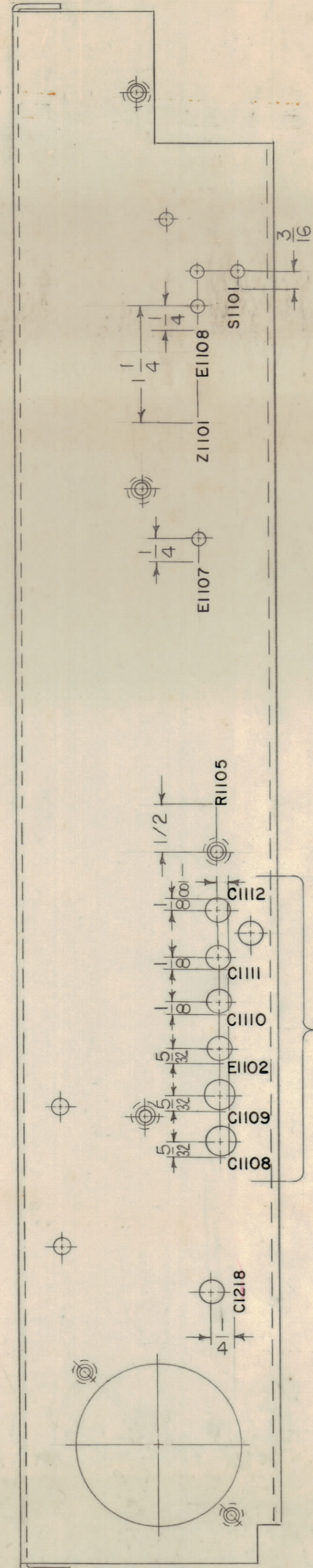


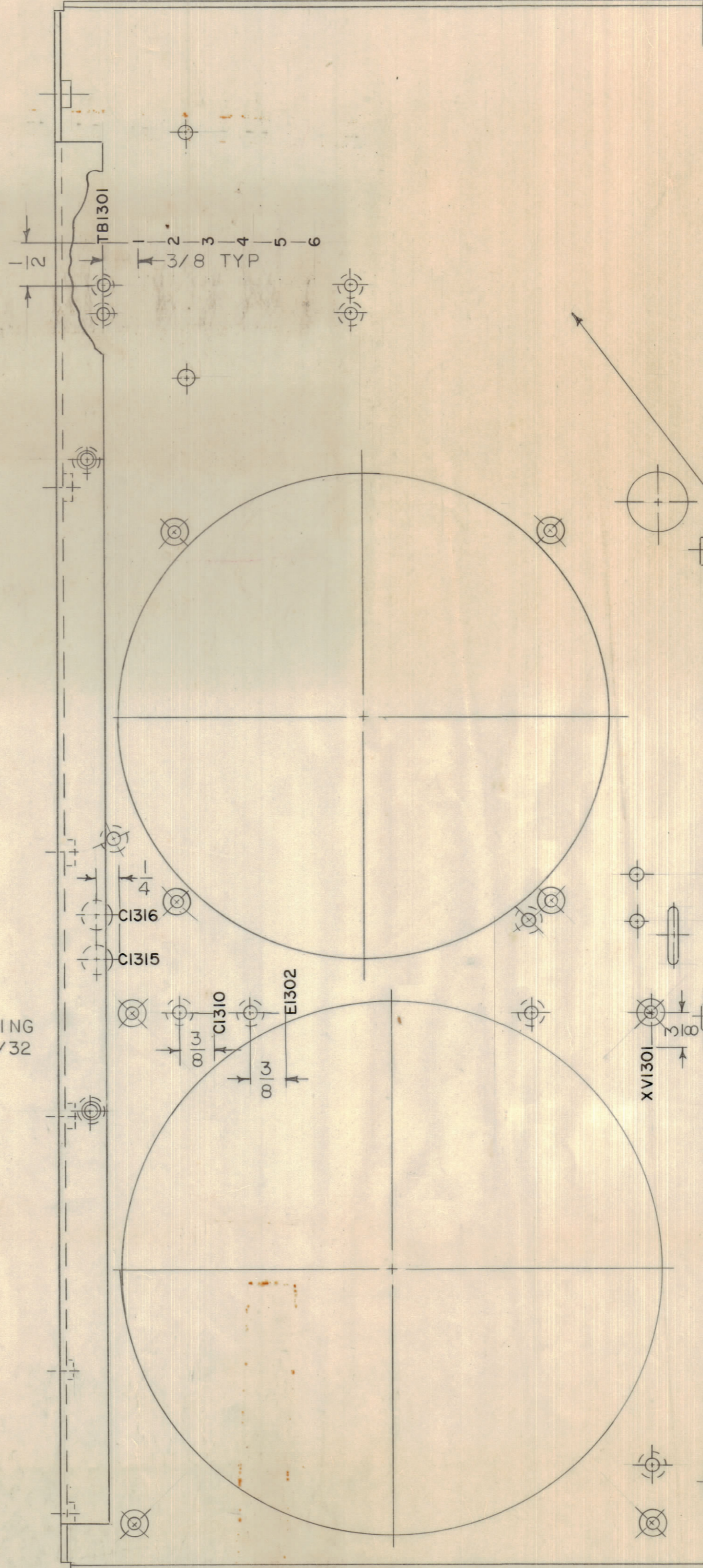
REVISIONS							
E.M.N.O	DRAFT	CHKD	ZONE	LTR	DESCRIPTION	DATE	APPROVED
	0			0	ORIGINAL RELEASE FOR PRODUCTION	6/21/71	P.E.J.



FRONT VIEW



TOP VIEW



REAR VIEW

LETTERING TO BE 3/32 HIGH

MARK TMC PART NUMBER
1/8 HIGH GOTHIC WITH LATEST
REVISION LETTER

MARKING PROCESS: AS PER TMC SPECIFICATION S727
LETTERING: 1/8 HIGH BLACK GOTHIC, LOCATED AS SHOWN

REF: MS 5977

I	TLAA-1K	BMA 457
QTY / UNIT	MODEL USED ON	ASS'Y NO.
	APPLICATION	
	CODE	
<small>NOTICE TO PERSONS RECEIVING THIS DRAWING</small> <small>THE TECHNICAL MATERIEL CORPORATION claims proprietary right in the material disclosed hereon. This drawing is issued in confidence for engineering information only and may not be reproduced or used to manufacture anything shown hereon without permission from THE TECHNICAL MATERIEL CORPORATION to the user. This drawing is loaned for mutual assistance and is subject to recall at any time.</small>		

QTY. REQ.	ITEM	PART NO.	DESCRIPTION	SYMBOL
	F. BUDETTI			
	FINAL APPROVAL	DATE	LIST OF MATERIAL	
	MECH. DES.	21 Jun 71	THE TECHNICAL MATERIEL CORP.	
	ELECT. DES.	21 Jun 71	MAMARONECK, NEW YORK	
	CHECKED	DATE	CHASSIS, R.F.	
	DRAWN	DATE		
	R. Portano	4-15-71		
	MATERIAL		SIZE	CODE IDENT NO. DWG NO.
	FINISH		D	82679 LD 2457
			SCALE 1/1	SHEET 1 OF 1

QTY. REQ.	ITEM	PART NO.	DESCRIPTION	SYMBOL
	F. BUDETTI			
	FINAL APPROVAL	DATE	LIST OF MATERIAL	
	MECH. DES.	21 Jun 71	THE TECHNICAL MATERIEL CORP.	
	ELECT. DES.	21 Jun 71	MAMARONECK, NEW YORK	
	CHECKED	DATE	CHASSIS, R.F.	
	DRAWN	DATE		
	R. Portano	4-15-71		
	MATERIAL		SIZE	CODE IDENT NO. DWG NO.
	FINISH		D	82679 LD 2457
			SCALE 1/1	SHEET 1 OF 1