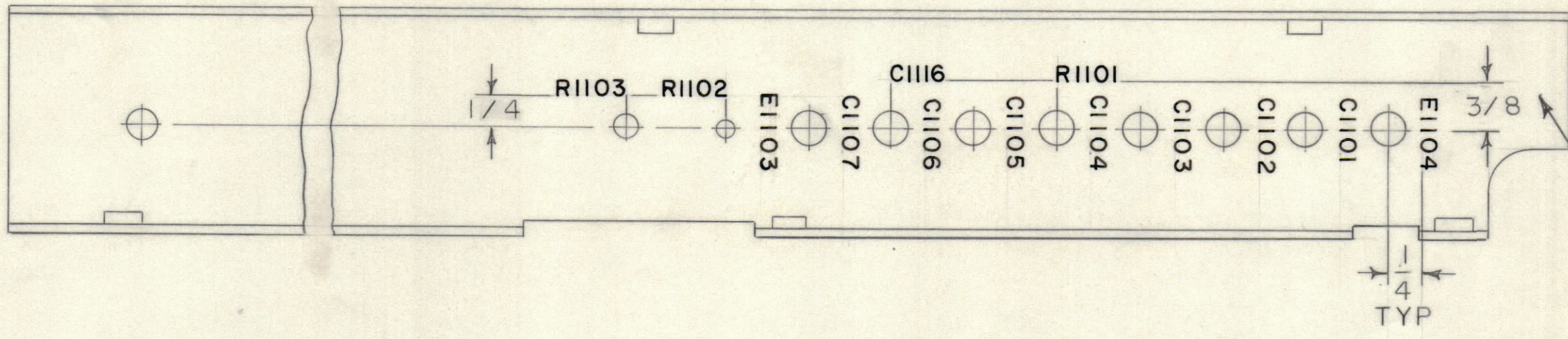
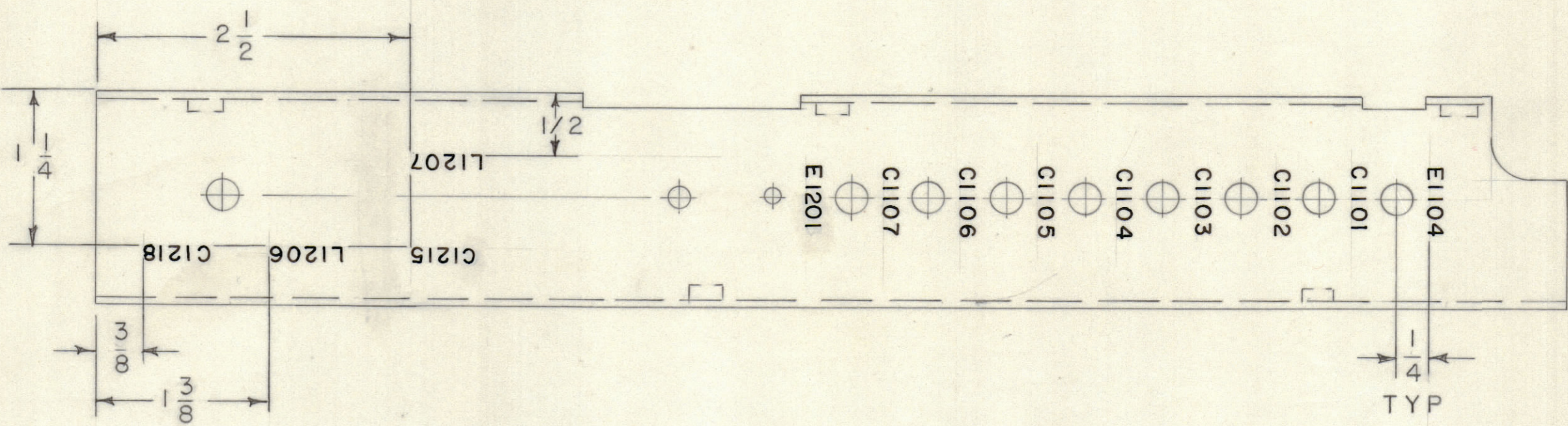


REVISIONS							
E.M.N.NO	DRAFT	CHKD	ZONE	LTR	DESCRIPTION	DATE	APPROVED
	W			Ø	ORIGINAL RELEASE FOR PRODUCTION	6/21/71	J.E.J.



MARK TMC PART NUMBER  
1/8 HIGH GOTHIC WITH LATEST  
REVISION LETTER

MARKING PROCESS: AS PER TMC SPECIFICATION S727  
LETTERING: 3/32 HIGH BLACK GOTHIC, LOCATED AS SHOWN



QTY. REQ.	ITEM	PART NO.	DESCRIPTION	SYMBOL
	REF. MS 5979			
	F. BUDETTI			
	LIST OF MATERIAL			
	THE TECHNICAL MATERIEL CORP. MAMARONECK, NEW YORK			
	BRACKET, FEED THRU			
	UNLESS OTHERWISE SPECIFIED DIMENSIONS ARE IN INCHES AND INCLUDE CHEMICALLY APPLIED OR PLATED FINISHES			
	TOLERANCES ON			
	DECIMALS                      FRACTIONS			
	.X ± .05                              ± 1/64			
	.XX ± .01                             ANGLES			
	.XXX ± .005                         ± 0° -30'			
	MATERIAL			
	FINISH			
			SIZE	CODE IDENT NO.
			C	82679
				DWG NO.
				LD2459
				ISSUE
				Ø
			SCALE 1:1	SHEET OF

QTY / UNIT	MODEL USED ON	ASS'Y NO.
1	TLAA 1K	BMA461
APPLICATION		
CODE		
NOTICE TO PERSONS RECEIVING THIS DRAWING		
THE TECHNICAL MATERIEL CORPORATION claims proprietary right in the material disclosed hereon. This drawing is issued in confidence for engineering information only and may not be reproduced or used to manufacture anything shown hereon without permission from THE TECHNICAL MATERIEL CORPORATION to the user. This drawing is loaned for mutual assistance and is subject to recall at any time.		